

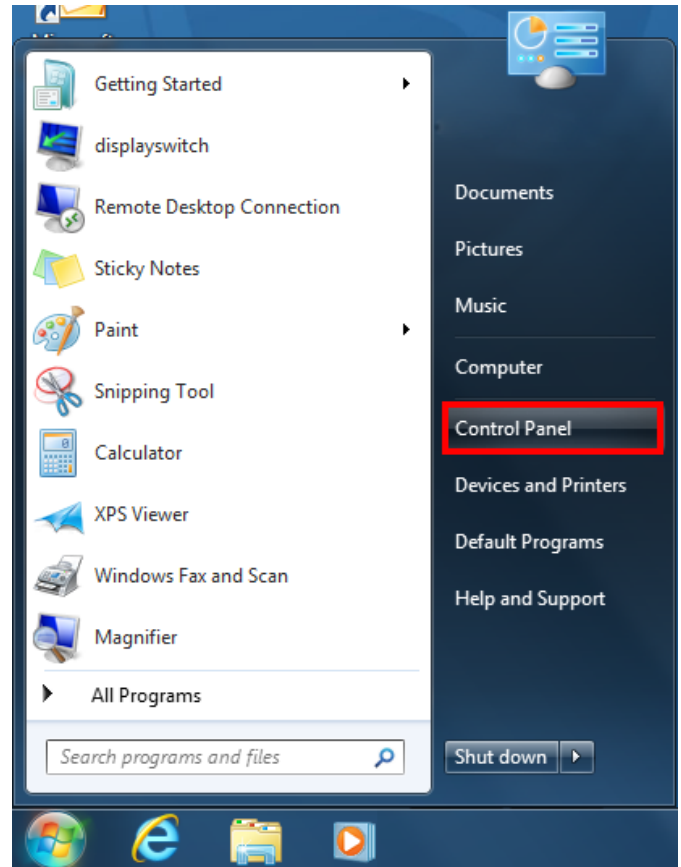
Eduroam Setup

Manual Configuration Windows 7

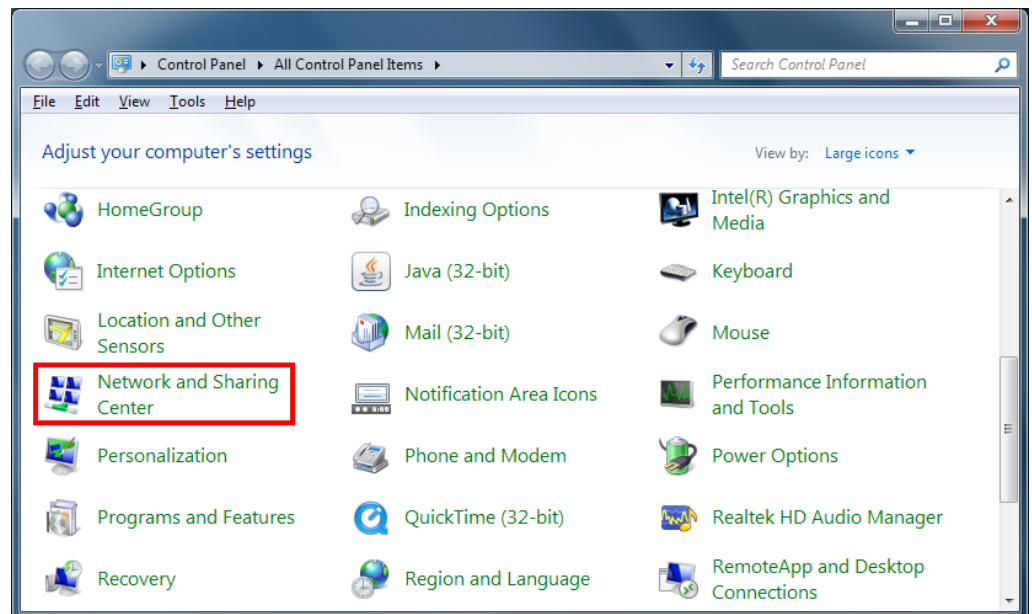
These steps are for those who are having problems getting connected to eduroam. Normally, selecting the network and typing in your Network username and password will allow you to automatically obtain all of the necessary connection settings. When this has failed, use the steps below to manually configure your connection.

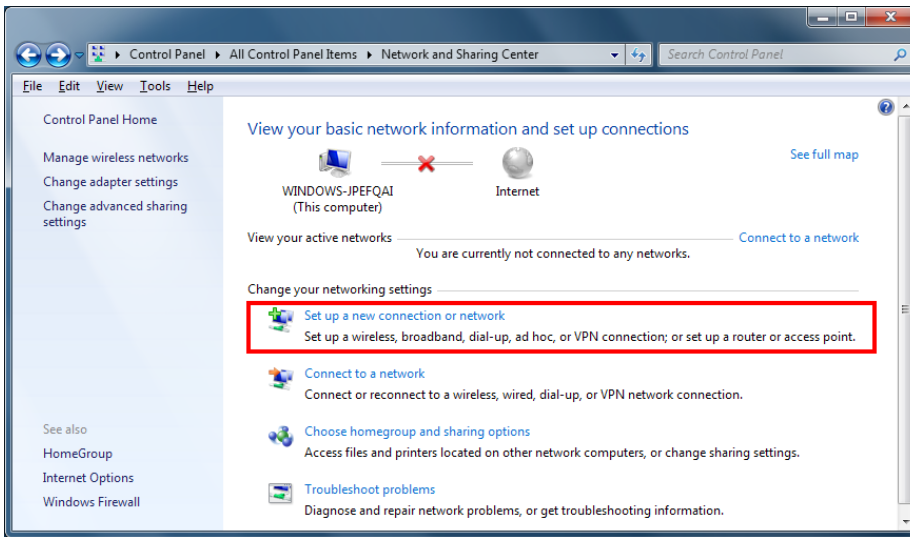
At the Start Menu

Select **Control Panel** from the right hand side of the menu



Locate **Network and Sharing Center** in the Control Panel.

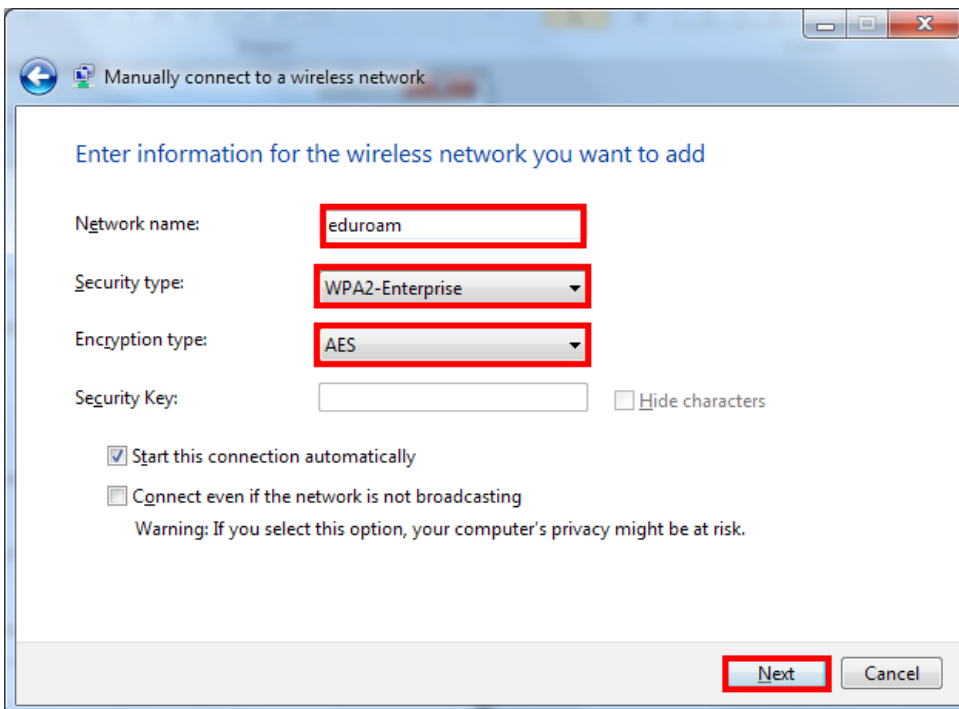
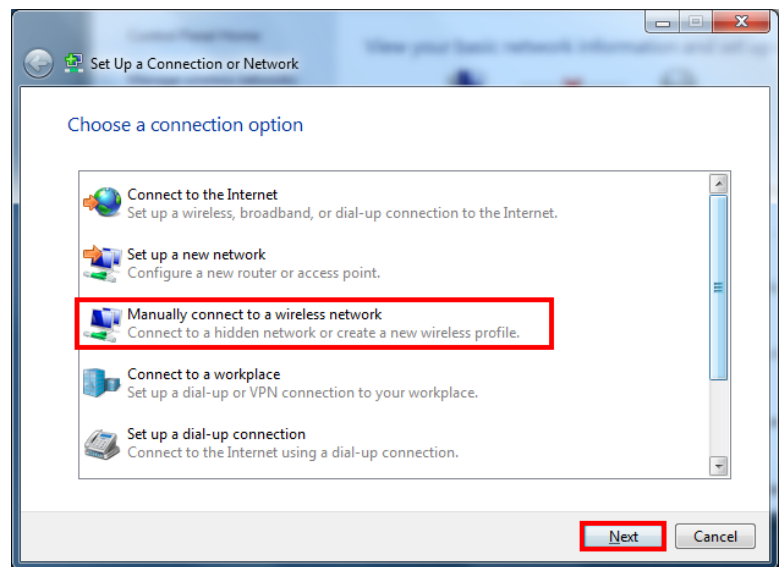




Select **Setup a new connection or network**

Select **Manually connect to a wireless network**

Click **Next**



Type **eduroam** all lowercase in the Network Name field

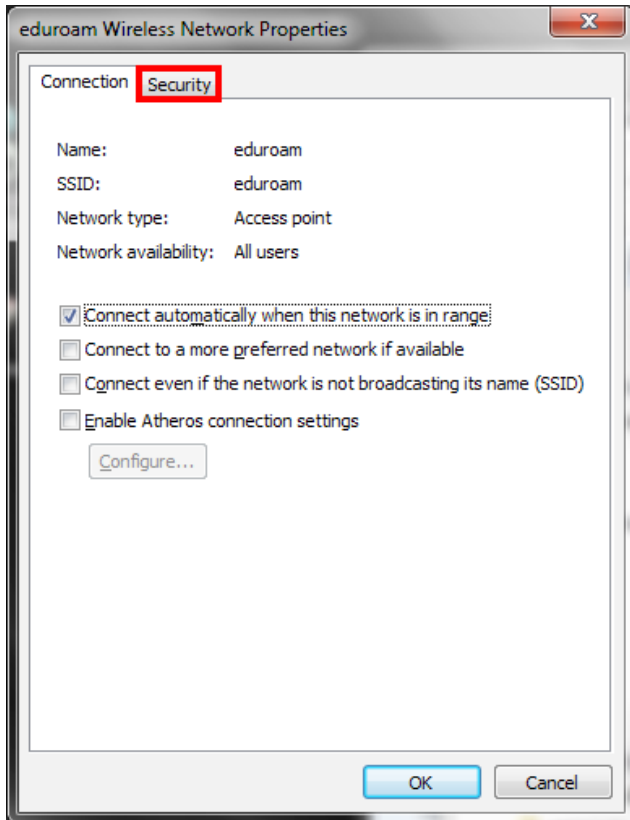
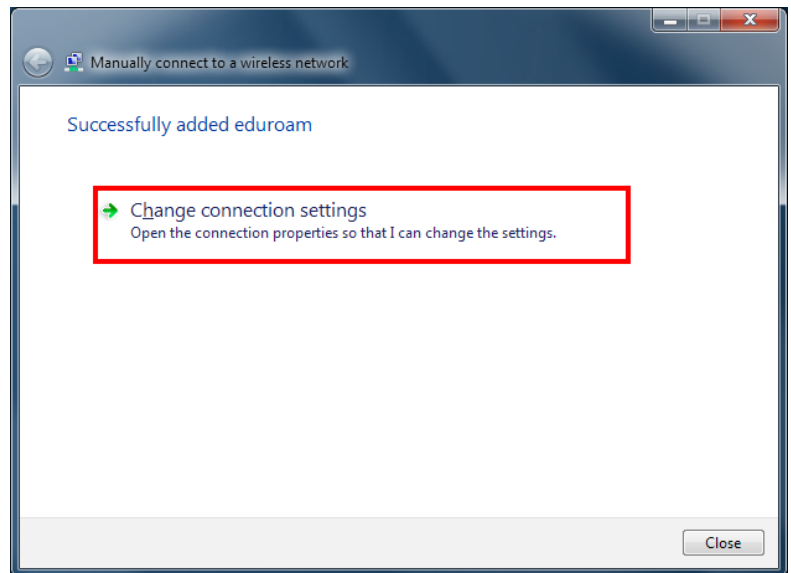
Select **WPA2-Enterprise** in the Security Type drop down menu

Encryption type should be **AES**

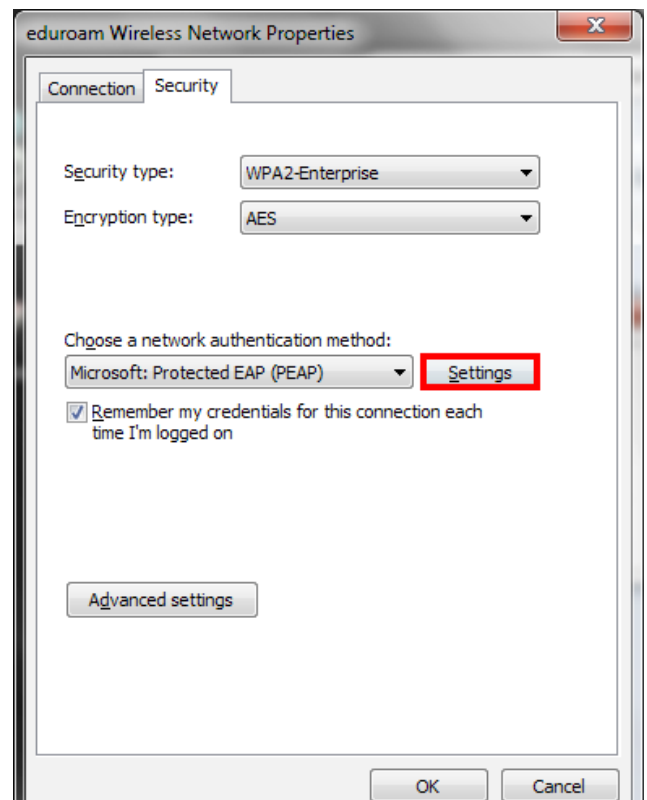
Leave Security Key Blank

Click **Next** to continue

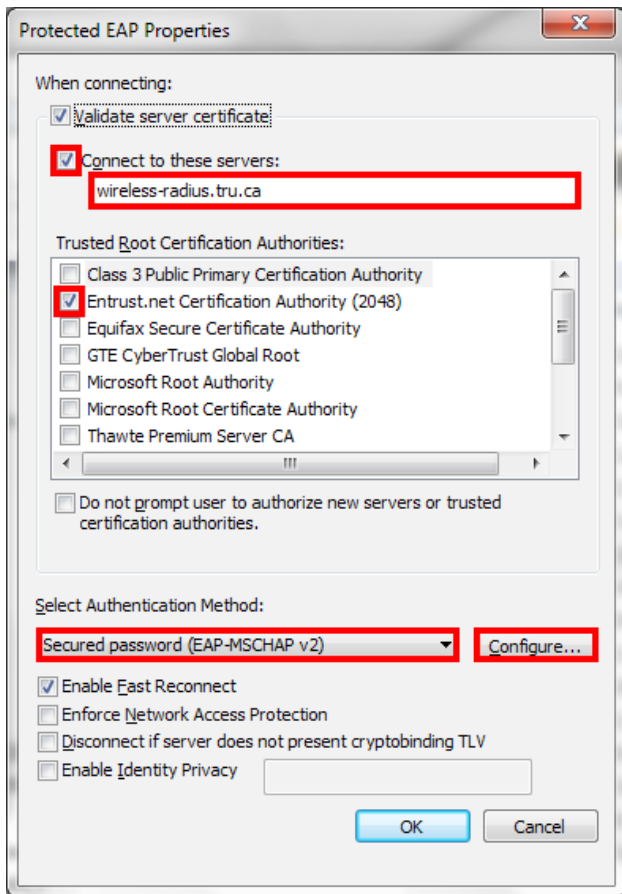
Select **Change connection settings**



Click the **Security** Tab



Click **Settings**



Check **Connect to these servers**
Type **wireless-radius.tru.ca** in the field below

Locate and check **Entrust.net Certification Authority (2048)** from the list of Trusted Root Certification Authorities

Authentication method dropdown needs to be set to **Secure Password (EAP-MSCHAP v2)**

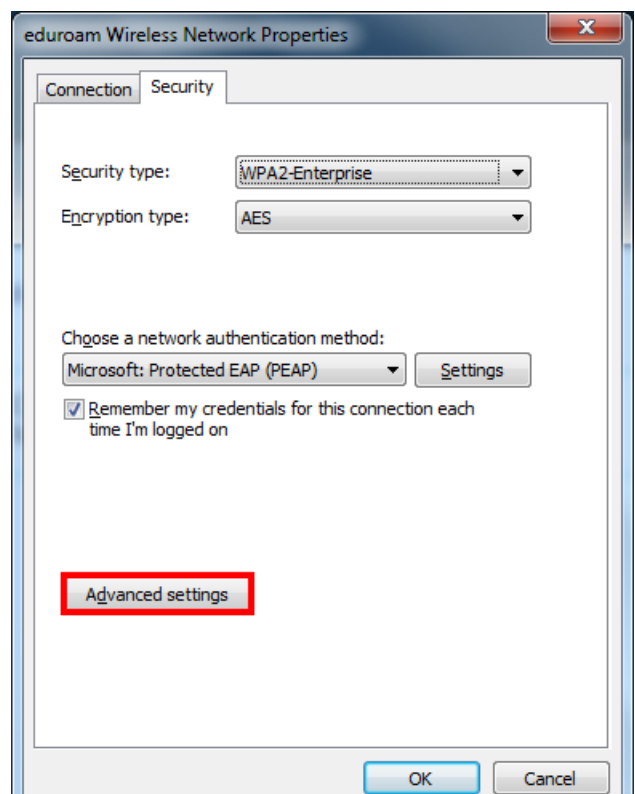
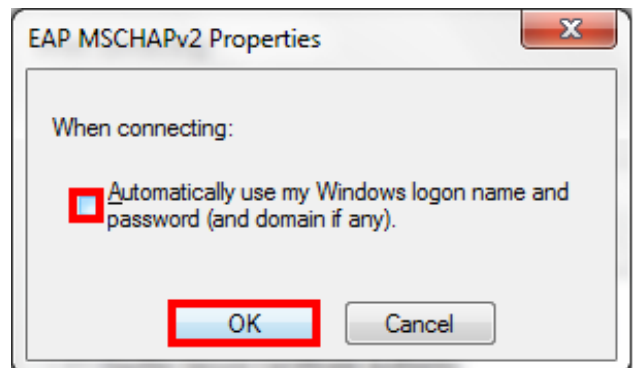
Click **Configure** to bring up the EAP MSCHAPv2 Properties

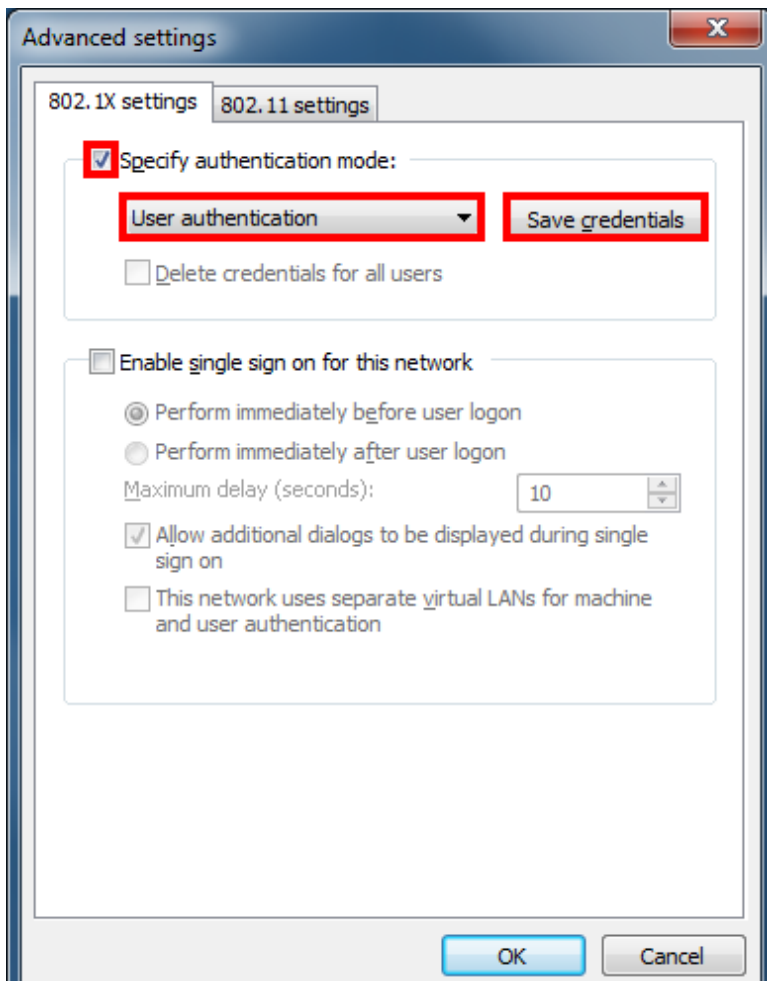
Uncheck Automatically use my Windows logon name and password

Click **OK** to confirm

Click **OK** again in the Protected EAP window

Select **Advanced settings**





Set the authentication mode drop down to **User Authentication**

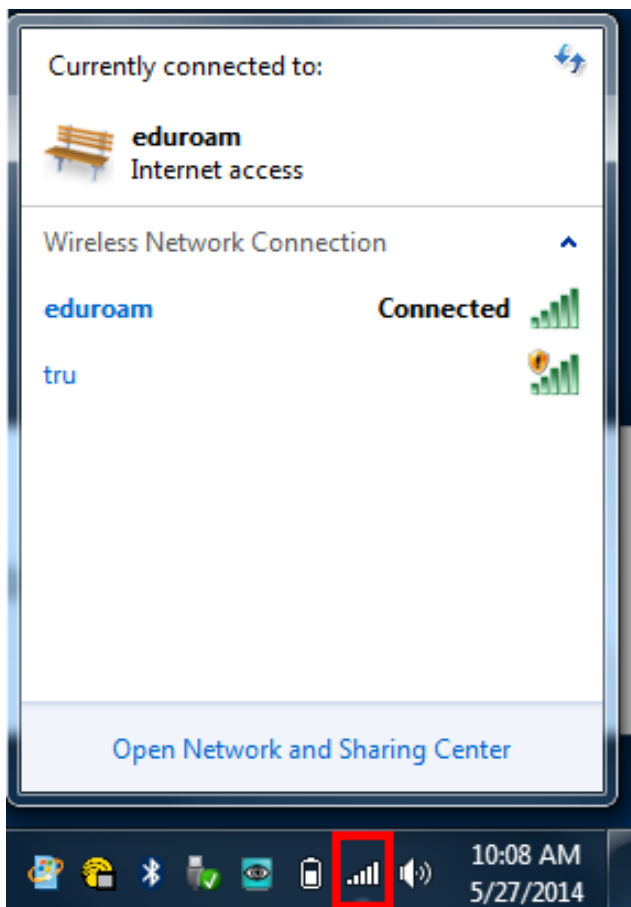
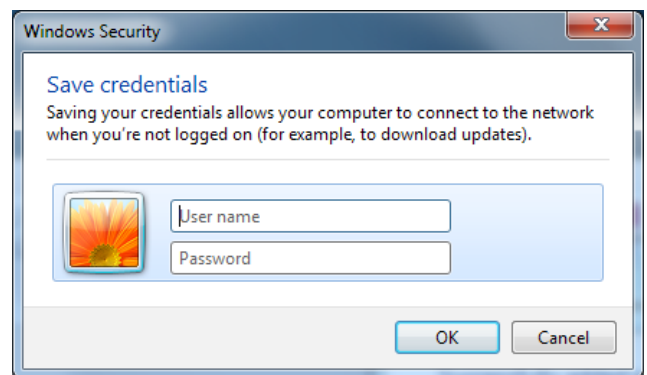
Click **Save credentials**

Enter your Network Username and Password

Click **OK** to save the credentials

Click **OK** to close out of Advanced Settings

Click **OK** in the Wireless Network Properties



Click on the Wireless Icon in the lower right hand corner
eduroam should now show connected