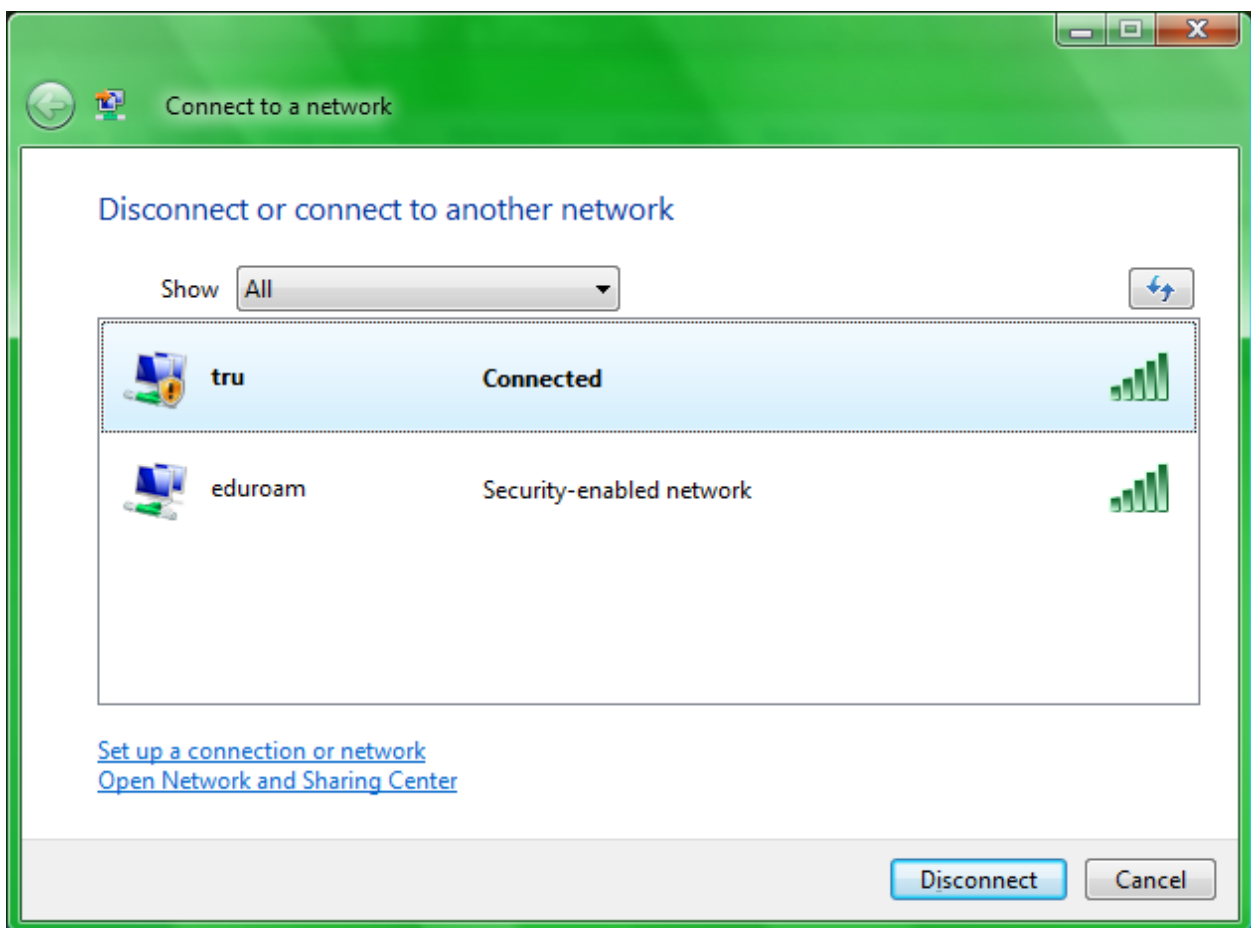


## EduRoam for Vista

Click the **Network Connection** icon in the taskbar and click **Connect to a network**.

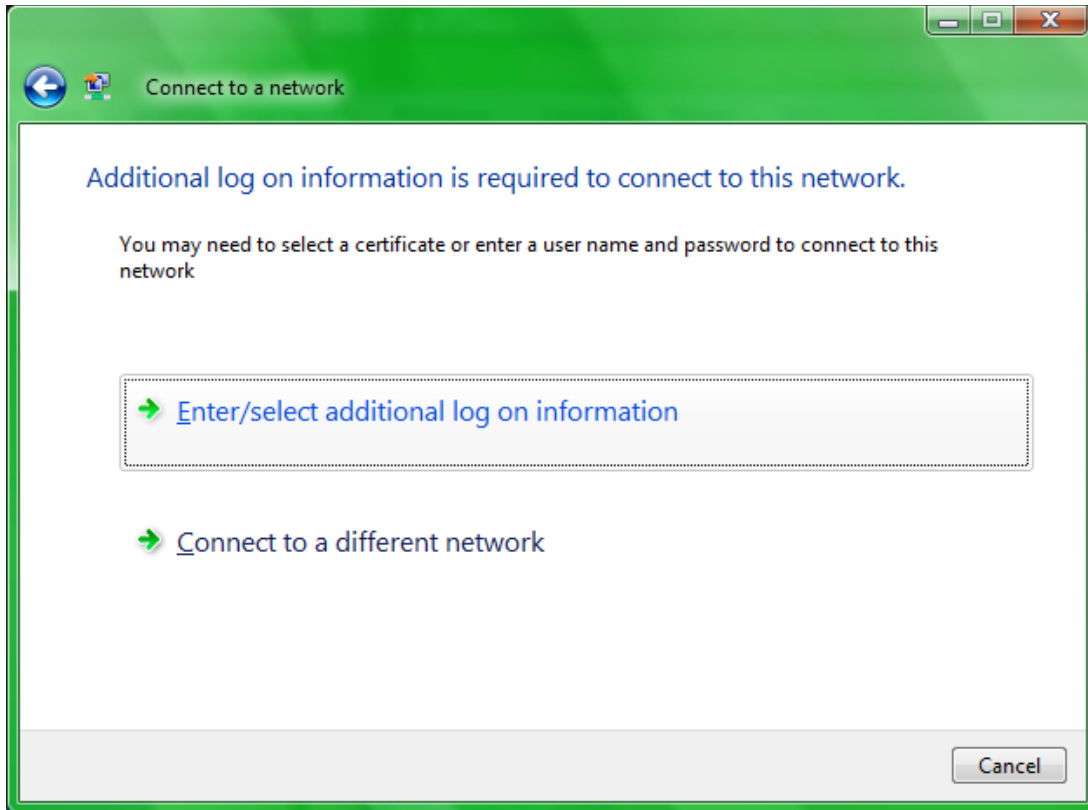


2) Double-click *EduRoam* and wait while Windows attempts to connect to the network.



When you select EduRoam, the following dialogue box will occur. Select Enter/select additional log on information.

# EduRoam for Vista



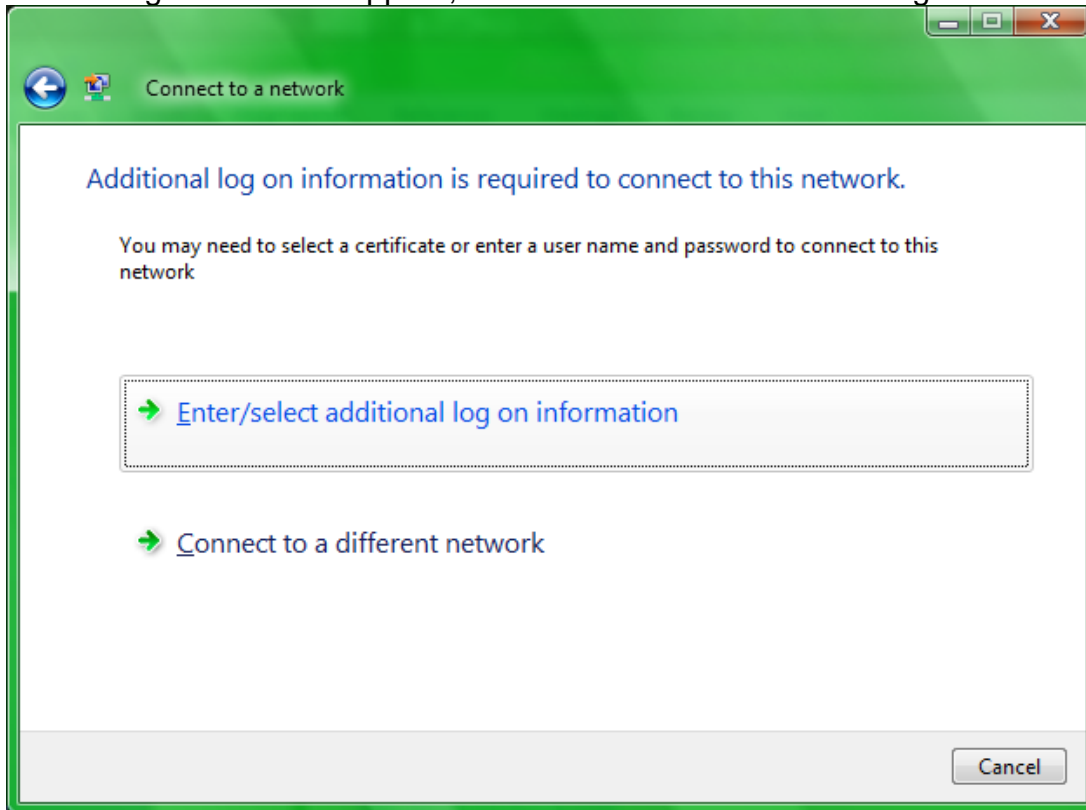
If the client has logged onto an NMAS computer (to gain a Universal password) they should be able to enter their username and password, no Domain information is required. Clients should go to one of the open computers labs to log on to Novell (and log off) and then EduRoam should work because they will have authenticated their Universal password.



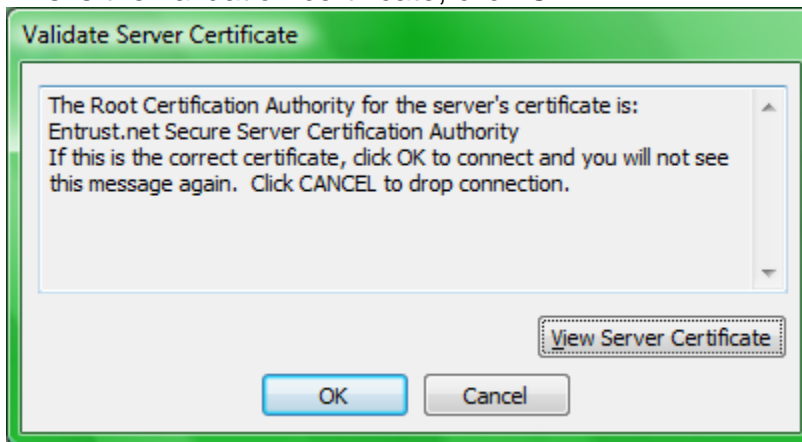
Enter [Username@tru.ca](mailto:Username@tru.ca)  
And Password.  
The Login domain should be left blank.

## EduRoam for Vista

This Dialogue box will reappear, Select Enter/select additional log on information again.

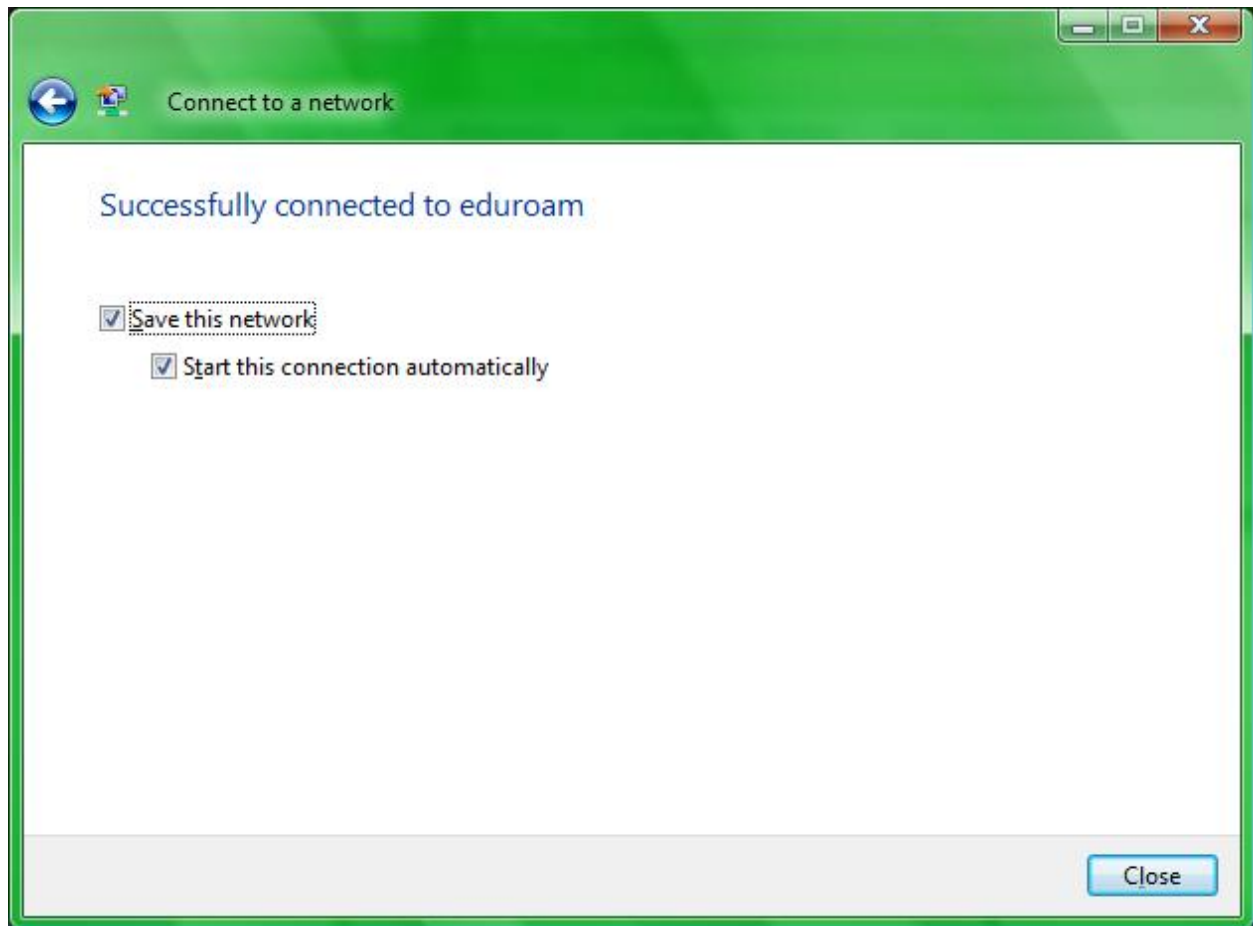


This is the validation certificate, click OK.



This confirms that the connection was successful, click on OK.

## EduRoam for Vista



Ensure that “Save this network” and “Start this connection” automatically are checked, and click Close.

It may take up to a minute before Windows Vista will finalize the connection. During this time it may give a warning saying *Limited Connectivity*