
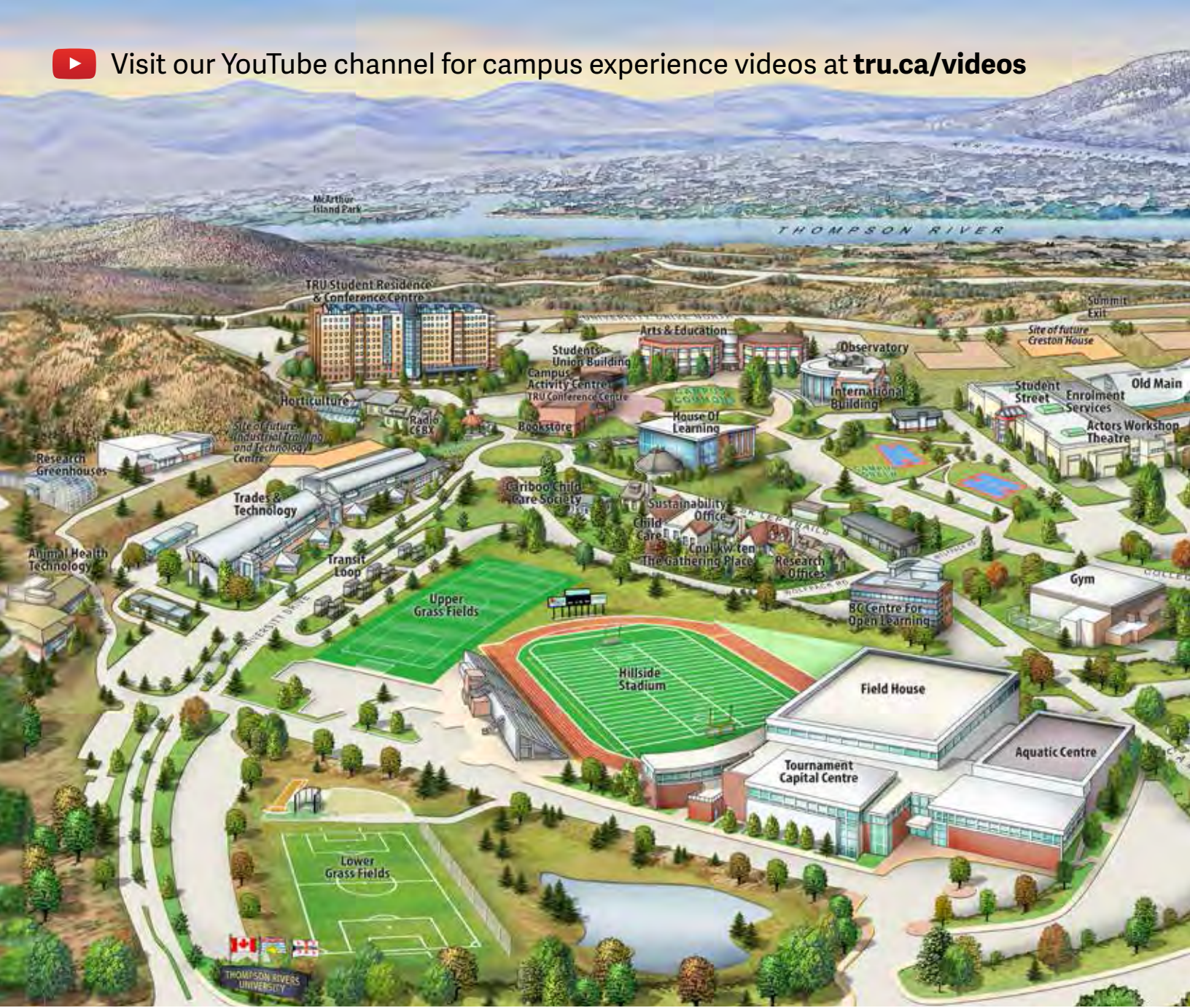


# FOR



 Visit our YouTube channel for campus experience videos at [tru.ca/videos](https://www.tru.ca/videos)





## CONTENTS

TRU. A Campus Unlike Any Other . . . . .	3	Distance Education . . . . .	14
Kamloops. A Unique Location. . . . .	4	Research at TRU . . . . .	15
Campus Life . . . . .	6	Short-Term Studies . . . . .	16
Sports, Recreation & Activities . . . . .	7	International Partnerships . . . . .	17
Co-operative Education. . . . .	9	Study Abroad. . . . .	17
Scholarships . . . . .	10	Study Options for International Students . . . . .	18
Global Competency Certificate. . . . .	10	International Accreditations & Transfer Credit. . . . .	20
Supporting Our Students. . . . .	11	English Language upgrades & U-Prep. . . . .	21
Accommodation & Transit . . . . .	12	Programs & Admission Requirements . . . . .	22
Williams Lake Campus . . . . .	14	How to Apply. . . . .	37





**1 MILLION** 250 ACRE CAMPUS  
SQUARE FEET  
OF LEARNING SPACE AND  
  **40 ACRES**  
OF GREEN SPACE

**12 WOLFPACK TEAMS**



**7 VARSITY TEAMS** **5 ATHLETIC CLUBS**

 **12**  
ON-CAMPUS  
**PLACES  
TO EAT**

**9**   
**FACULTIES  
AND  
SCHOOLS**

**BUSES TO CAMPUS**

**EVERY**  **15** MINUTES

**U-Pass for students** provides free access to the Kamloops transit system and the Aquatic Centre.

**#mytru**



TRU is in the  
 **of Kamloops**  
within walking distance of everything you need

**3,000+**    
INTERNATIONAL  
STUDENTS









# TRU. A CAMPUS UNLIKE ANY OTHER

At Thompson Rivers University, we provide quality education and strive for excellence while ensuring our students get the support they need to succeed. We welcome all people and cultures, and promote intercultural understanding.

TRU offers more than 140 on-campus programs and 55 Open Learning programs in areas such as arts, business, computer science, education, environment, law, nursing, sciences, social work, tourism and trades and technology. Our average class size is 31 students.

A vibrant community of more than 14,000 students studying on campus are working towards graduate and undergraduate degrees, diplomas, apprenticeships, professional certificates, continuing studies and English as a Second Language. We have more than 3,000 international students from over 89 countries. Wherever you are from, we can help you follow your passion at TRU.

## TRU Offers:

- Master's degrees
- Graduate certificates
- Bachelor's degrees
- Post-baccalaureate diplomas
- Certificates and diplomas
- Associate degrees
- English as a Second Language (ESL)
- Short-term customized training programs
- University transfer credit
- University preparation

As a university located in the city known as the Tournament Capital of Canada, TRU has thriving sports programs and students have access to amazing fitness facilities like the Tournament Capital Centre (TCC), Olympic-length swimming pool and a FIFA-certified artificial turf field.

Our WolfPack varsity teams include over 250 athletes in baseball, basketball, cross-country running, curling, rugby, soccer and swimming. Another 900 students participate in intramural and drop-in sport leagues.

Take a virtual tour: [tru.ca/tours](https://tru.ca/tours)







# 200+ LAKES NEARBY

## KAMLOOPS. A UNIQUE LOCATION

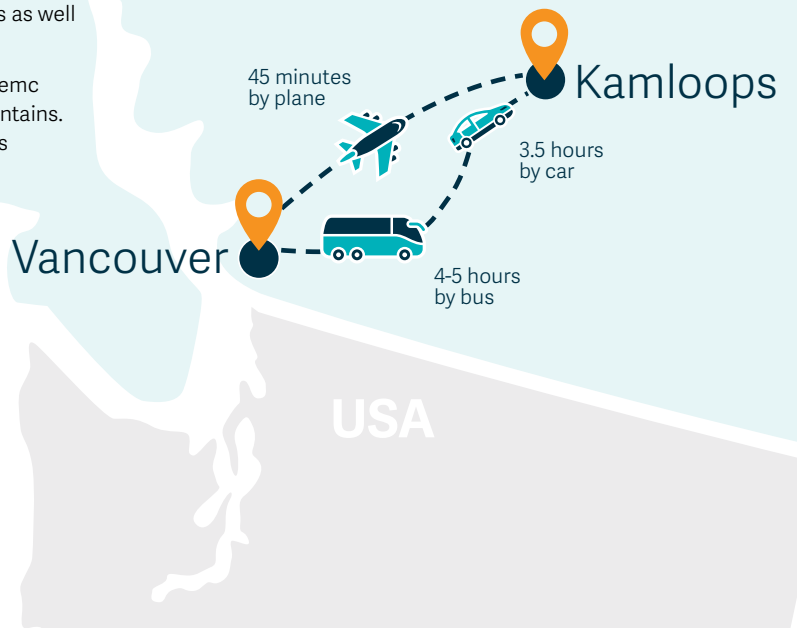
Our picturesque campus is in the heart of Kamloops, BC, where it overlooks the meeting of the North and South Thompson rivers. Kamloops is home to 100,000 friendly residents and is rich with sporting and cultural events as well as boasting four seasons of outdoor adventures.


This region is part of the traditional lands of the Tk'emlúps te Secwépemc Indigenous people and spans grasslands, pine forests, lakes and mountains. Their presence and history contributes to the diversity that influences TRU's campus.

You'll discover parks, museums, art galleries, year-round outdoor activities, shopping, movies, theatre and even vineyards. Kamloops is also home to numerous churches, a mosque, Sikh temples and a Buddhist monastery.

Discover more about Kamloops at [tourismkamloops.com](http://tourismkamloops.com)

### British Columbia, CANADA



 More about Kamloops [tinyurl.com/kamvidtour](https://tinyurl.com/kamvidtour)



## 4 MAJOR HIGHWAYS & 1 AIRPORT





# SUN PEAKS RESORT

#2 IN BEST  
CANADIAN SKI  
DESTINATIONS



**ONE OF THE SUNNIEST CITIES  
IN BRITISH COLUMBIA**





# CAMPUS LIFE

## Beyond the classroom

**Get involved on campus and reach your full potential.**

TRU has over 100 clubs for almost every interest: academic, athletic, common interest, ethnic, political and religious. Join one of the existing clubs or start your own! You'll meet like-minded people and make new friends, showcase your talents, create lasting memories and have fun.

### Example Clubs:

- Bangladesh Club
- Chinese Students & Scholars Club
- Entrepreneurship Club
- Finance Club
- India Club
- Japanese Club
- Modern Marketing Club
- Pakistan Club
- Pan-African Club
- Spanish Club
- Vietnamese Club

Find a full list of clubs at [tru.ca/clubs](http://tru.ca/clubs)

### TRU Generator


Get involved in entrepreneurship on campus. Join the TRU Generator, where you can network and participate in a vibrant startup community. It's open to TRU alumni, faculty, staff and students.

Visit [tru.ca/generator](http://tru.ca/generator)

## International Days Festival (IDays)

International Days is our award-winning, week-long celebration of cultures from around the globe. Learn how diverse TRU really is. IDays is an opportunity to share culture, international experience, research and interests while celebrating TRU's international community and international collaborations.

Find out more at [tru.ca/idays](http://tru.ca/idays)

 Watch IDays videos at [youtube.com/mytruworld](https://youtube.com/mytruworld)







# SPORTS, RECREATION & ACTIVITIES

TRU's Kamloops campus is right next to the City of Kamloops' top-notch athletic facilities in the Tournament Capital Centre (TCC) sports complex, where there's an Olympic-length swimming pool, indoor track and numerous workout spaces. Access to TCC's Aquatic Centre is included in TRU's student fees and all TRU students receive 50% off additional usage fees.



## Varsity athletics

In the 2017 season the Men's Soccer Program took home a historic national bronze in the U Sports National Championships hosted at TRU/TCC.

WolfPack varsity teams compete in Canada West, a division of U Sports (the highest competition level in Canadian University Sports), baseball, basketball, cheerleading, cross-country running, curling, soccer, swimming and volleyball.

For recruitment information visit [gowolfpack.tru.ca](http://gowolfpack.tru.ca)

## Intramural Sports

TRU Recreation offers intramural and drop-in games of badminton, basketball, dodgeball, floor hockey, soccer and volleyball; as well as various fitness classes, events and tournaments.

[tru.ca/recreation](http://tru.ca/recreation)

## Off-campus sports

Kamloops has top-level coaching and club competition in many different sports including figure skating, football, gymnastics, rowing, rugby, swimming and skiing. Students interested in competitive/club sports can attend TRU while pursuing their sport off campus.



## Explore BC with LEAP

The Leisure Exploration Activity Program (LEAP) provides students with educational, fun and exciting experiences each semester for a nominal fee. This is a great way to meet new people, explore the area, experience local culture, and try new activities such as:

- camping
- canoeing/kayaking
- daytrips to Vancouver
- ice skating
- ice hockey
- rock climbing
- seasonal parties
- skiing/snowboarding
- whitewater rafting
- wine tours

 Learn more at [facebook.com/leapTRU](https://facebook.com/leapTRU)





# WORK OPTIONS FOR INTERNATIONAL STUDENTS



## Work during your studies

International students are eligible to work on and off campus while studying full-time, and will qualify for a full-time work permit after graduation. You can work up to 20 hours a week while studying and full-time during scheduled breaks.

Find out about opportunities for international students at [cic.gc.ca/english/study/work.asp](http://cic.gc.ca/english/study/work.asp)



## Work after graduation

As an international student graduating from a Canadian post-secondary institution, you are eligible to remain in Canada to work. Students completing a minimum two-year program of study may be eligible to work for up to three years after graduation.



## Jumpstart your career

The Career Education department helps students plan their careers from building a professional resume to getting selected for the job interview. These career counsellors have years of experience and are committed to supporting students in reaching their career goals through a variety of initiatives.

Many of our international graduates have successfully found jobs in Canada in their area of study. Companies that hire TRU graduates include banks, Crown corporations, major retailers, municipal governments, non-profits and universities (including TRU). Here are some of the many companies that hire TRU graduates.

### Banks

- Bank of Canada
- Bank of Montreal
- CIBC
- HSBC Bank
- Interior Savings
- Royal Bank of Canada
- Scotiabank
- TD Bank Group

### Crown Corporations

- BC Hydro
- BC Public Service
- BCLC
- Interior
- Health Authority

### Higher Education

- BCIT
- Thompson Rivers University
- University of British Columbia

### Major Retailers

- Air Canada
- Best Buy
- BlackBerry
- Canadian Tire
- Hootsuite Media Inc.
- Re/Max Real Estate
- KPMG
- Loblaw Companies
- Shaw Communications
- Telus Corporation
- Tolko Industries Limited

### Municipal Governments

- City of Kamloops
- City of Surrey
- City of Vancouver

### Non-Profit Organizations

- Canadian Cancer Society

Get more information at [cic.gc.ca/english/study/work-postgrad.asp](http://cic.gc.ca/english/study/work-postgrad.asp)





### Bachelor of Business Administration

Co-op helped me gain relevant skills before graduation, and I received an immense amount of experience in my eight months working for TRU World. TRU's Career Education Department provided resources to help me build a career plan. I would recommend every new student visit the department for any career-related services.

# CO-OPERATIVE EDUCATION

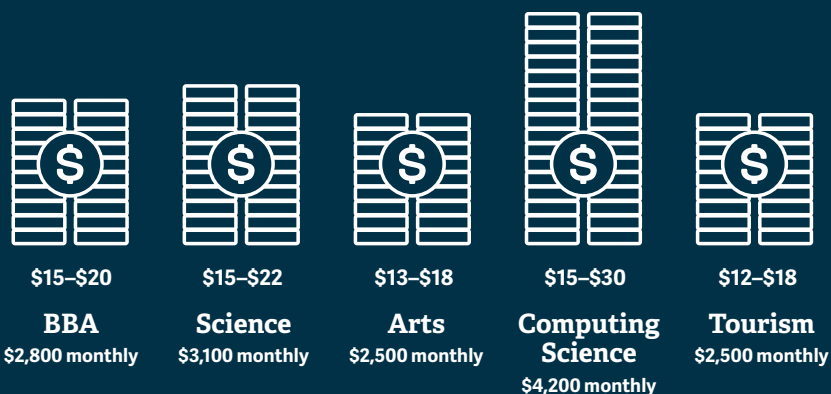
Co-operative education combines academic studies with paid work experience. Students alternate between terms of full-time study and full-time employment.

## Why co-op?

- Get paid for career-related work experience while studying
- Earn academic credits and transcript distinction
- Maximize job opportunities upon graduation
- Choose from co-op placements in Kamloops and across Canada
- TRU co-op office prepares students for interviews and job placements
- Choose to work up to four semesters

**!** Co-op students can receive academic credit for co-op work terms.

## Average hourly co-op wages



## Sample co-op schedule

(based on working four co-op semesters)

	YEAR 1	YEAR 2	YEAR 3	YEAR 4	YEAR 5
September to December	Academic semester 1	Academic semester 3	Academic semester 5	Academic semester 7	Academic semester 8
January to April	Academic semester 2	Academic semester 4	Academic semester 6	Co-op work term 3	
May to August		Co-op work term 1	Co-op work term 2	Co-op work term 4	Graduation

For co-op requirements, fees and more information, go to [tru.ca/coop](http://tru.ca/coop)



# SCHOLARSHIPS

## International athletic scholarships



Considered for students qualifying for one of TRU's varsity sports teams.

## Jorge Campos Award for Mexican citizens



This scholarship is open only to Mexican citizens currently enrolled in a full-time program of studies in Mexico.

## Scholarships for residents of the Bahamas and Caribbean



Students from the Bahamas entering an undergraduate program in the Faculty of Adventure, Culinary Arts and Tourism or the School of Business and Economics will automatically be considered to receive a \$7,500 CAD award. One student is selected each year.

## Engineering scholarships



International students accepted and enrolled in TRU's two-year engineering transfer program will be considered.

## Scholarships for American students



US citizens admitted to a TRU undergraduate program of two years or longer are eligible for an automatic scholarship of \$2,000 CAD per student.

## International Social Media Ambassador awards



A limited number of awards are available for international and Canadian students interested in promoting TRU worldwide as a study destination, as part of a dedicated Ambassador team.

## TRU Law International Student Award



An award of \$5,000 CAD per student is available to all qualified international students enrolled in the Juris Doctor program.

## Diversity scholarships



TRU offers global diversity scholarships to new international students that demonstrate excellent academics and are from countries that are underrepresented on campus. To be considered, students should meet one of the following: 3.0 GPA or 6.5 IELTS or 88 TOEFL iBT.

For more information, visit: [truworld.ca/scholarships](http://truworld.ca/scholarships)

# GLOBAL COMPETENCY CERTIFICATE

## Recognizing future global leaders

When you graduate from TRU, we want you to launch your career with a resumé full of the relevant learning experience that today's employers value. Global Competency gives you just that—documented evidence of the knowledge, skills and attitudes of a globally-minded citizen.

Global Competency is a credential that can be earned in tandem with any credit program—undergraduate or graduate—offered by TRU. The program uses a portfolio approach that allows each student to track a number of different educational and personal experiences.

For more information, visit: [tru.ca/global](http://tru.ca/global)



## How do I earn it?

To earn this credential, a student must complete only four steps:

- Attend an orientation session
- Sign up for GLBL1000
- Earn and compile points
- Submit a portfolio to the Centre for Student Engagement office OM 1468



# SUPPORTING OUR STUDENTS

TRU has Canada's largest and most comprehensive international student services and support team.



From left to right, back row: Jason Zheng, Karanvir Singh, Stephanie Wasden, Tracy Barth, Lucas Maikapar, Charlene Milburn. From left to right, front row: Jean Linteris, Carol Ryujin-Kawa, Lorna Hutchinson, Luliia Pakhomenko, Leslie Matthews, Lori Cooper. Not pictured: Anana Mitra.

## International admissions

Our International Admissions team:

- processes applications
- provides course registration
- collects payments
- assists with admission inquiries
- assists with registration inquiries



From left to right: Keisha Morong, Marnie Store, Sherry Bennett, Monica Macaulay, Charlene Munro, Angela Sangha, Heather Gnoato, Lucy Phua, Karen Grigoleit.

## International academic advisors

Once you're accepted, our international academic advisors:

- plan your courses before you arrive
- monitor your academic performance
- provide counselling support
- advise on program requirements
- hold workshops



From left to right back row: Alesya Sharay, Eric Kim, Staffen Liu-Calver, Theresa Wei, Reuben Onyango. Front row: Marianna Abutalipova, Kamal Kaur, Reyna Denison, Donna McGrath, Rika Kimora.

## International student advisors

This multilingual team helps with personal counselling and assistance in most aspects of student life in Canada, including:

- housing
- visa applications and settlement services
- orientation and welcome services including airport reception, city tours and peer programs
- academic liaison
- cultural support



**Have questions? Just ASK!** Chat live with our student advisors at [truworld.ca](https://truworld.ca)



# ACCOMMODATION & TRANSIT

You can live minutes away from your classes where you have easy access to campus amenities and nearby city recreational facilities. Both TRU Residence and McGill Housing offer on-campus living options.

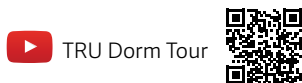
For more information about on- and off-campus housing, visit: [tru.ca/housing](http://tru.ca/housing)

## TRU Residence

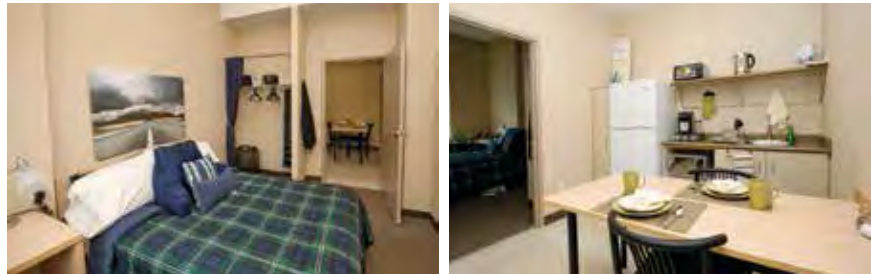
The 11-storey TRU Residence has some of the best views in the city. Each of the 570 private bedrooms includes a desk, chair, double bed, phone, TV and lamp. Floors are co-ed, but two- and four-bedroom suites with shared kitchenette and washroom are all female or all male. New students are guaranteed rooms if they apply by March 1st. After March 1st, applications are on a first-come, first-served basis.

### Rates for September 2018–April 2019 (fall/winter, two semesters)

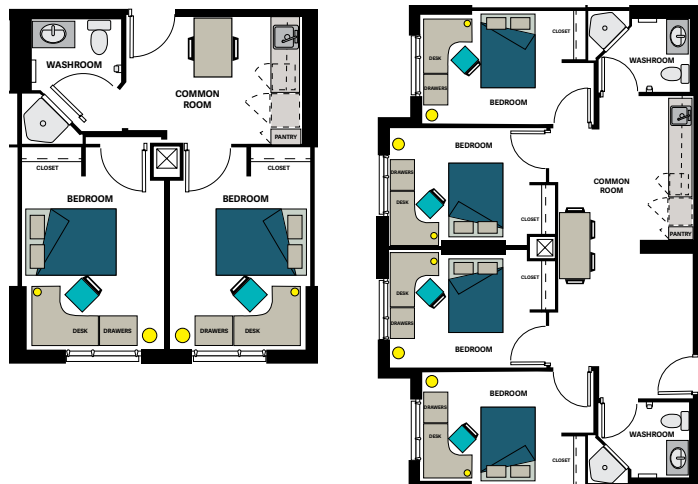
- Application fee and security deposit: \$500 CAD
- two- or four-bedroom suite (fall and winter semesters): \$7,500 CAD
- Residence life activity fee: \$50 CAD/semester



TRU Dorm Tour



TRU Residence Floor Plans: 2- and 4-bedroom suites



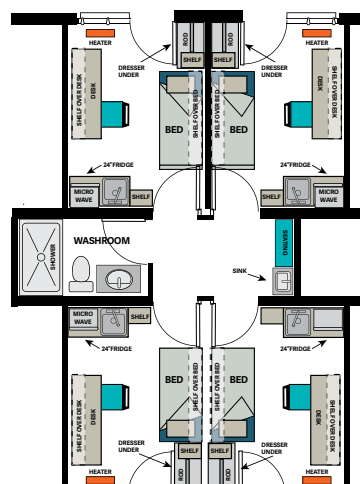
## McGill Housing

The McGill on-campus residence has 302 self-contained bedrooms with kitchenettes in four-bedroom quad units, in three buildings. Each all-female or all-male quad includes a shared washroom and common area, with access to a central building that has laundry, a bike room, a mail room and a resident kitchen (as well as study and recreational space). New students are guaranteed rooms if they apply by March 1st. After March 1st, applications are on a first-come, first-served basis.

### Rates for September 2018–April 2019 (fall/winter, two semesters)

- Application fee and security deposit: \$500 CAD
- Fall and winter semesters: \$5,050 CAD

McGill Housing Floor Plan:  
4-bedroom quad



\*Fees are subject to change without notice.



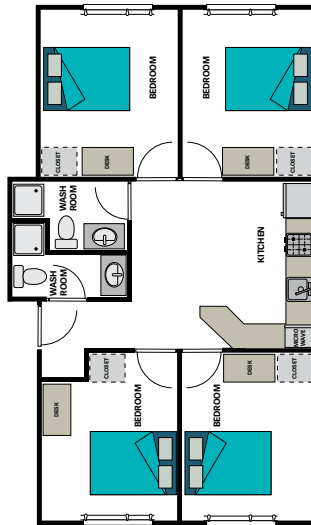


## Upper College Heights (UCH)

These dorms are located beside TRU and are an affordable option, approximately five minutes walking distance from campus. Four-person dorms include a shared kitchen and living area, with four bedrooms accessed from the common area.

### Rates for September 2018–April 2019 (fall/winter, two semesters)

- Fall and winter semesters (if paid before July 20, 2018): \$4,300 CAD
- Fall and winter semesters (if paid after July 20, 2018): \$4,500 CAD
- Rooms with balconies: \$200 CAD/semester extra
- Administration fee and security deposit: \$325 CAD



**UCH Floor Plan:** 4-bedroom quad:

## Homestay: Live with a Canadian family

Managed by TRU World staff, TRU's homestay program is a great way to experience Canadian culture and practice English by living with local families or individuals. More than 450 carefully selected Canadian homestay providers are in this program. Students get a private, furnished bedroom, three meals a day (and snacks) and a chance to live as part of a Canadian family while sharing their own culture.

*Cost is approximately \$825 per month, including meals.*



### Post-Baccalaureate Diploma in Human Resource Management

Living with a host family has helped me adapt and learn more about the Canadian culture. I love traveling, camping and fishing with my host family and I feel comfortable talking to them. They are always supportive and willing to help in anything they can. I definitely feel like part of their family!



**TATIANA SUMINA**  
RUSSIA



## Public Transit

There is limited fee-based parking on the TRU campus. Take advantage of the U-Pass bus pass included in your student fees! Buses to campus every 15 minutes.

Visit Kamloops Transit's website for a bus trip planner:  
[bctransit.com/Kamloops](http://bctransit.com/Kamloops)

*\*Fees are subject to change without notice.*



# WILLIAMS LAKE CAMPUS

Williams Lake is a long-time ranching and farming community with an economy based on area resources such as forestry and mining. TRU Williams Lake has the only ranching program in BC, which focuses on regenerative agriculture.

About 36,000 people live in the city and region, where the cost of living is low and people know their neighbours. Williams Lake has an expanding hospital and extended-care homes, so there is a demand for university-trained healthcare workers.

The campus boasts small class sizes, usually between 15 and 20 students, depending on the program. There are benefits to such an

intimate educational setting: faculty get to know their students and the campus is safe, friendly and close knit.

Visit our website for an accommodation list near campus. TRU Williams Lake is located in a residential area and there is housing within walking distance of campus.

Students can expect to pay between \$700 and \$1,000 per month for rent. There are buses, but they don't run as regularly as bus systems in larger centres, so most residents rely on cars for transportation.

For more information, visit [tru.ca/williamslake](http://tru.ca/williamslake)



## Applied Agriculture & Enterprise Management

Growing up in Ghana, West Africa, I saw an opportunity for agriculture to raise the population's standard of living. Seeking an effective approach to making a difference in the world, I've completed my first year of TRU's Applied Sustainable Ranching two-year program and already feel confident managing a farm.

Watch **Majeed's** full testimonial



# DISTANCE EDUCATION

## Learn wherever you are

As BC's leading online and distance education provider, TRU Open Learning offers over 55 programs and 500 courses. More than 17,000 TRU students study online or by distance.

Open Learning gives you more options and flexibility in your schedule. You can complete some courses before you arrive to study on campus, saving you time and money.

While on campus, you can take blended studies combining in-class and online Open Learning courses. You can enroll in Open Learning courses at any time and complete them as your schedule allows. This allows you to maintain a flexible schedule while still getting credit for courses that count toward your full degree.

Get the details at [truopen.ca](http://truopen.ca)







# RESEARCH AT TRU

As one of six members of the Research Universities' Council of British Columbia, TRU is committed to distinguishing itself among BC's research leaders. We support efforts to achieve excellence with research facilities, internal funding, research chairs, knowledge mobilization resources and student research.

Engaging in undergraduate research will increase your academic and professional success, and enhance your ability to think critically, ask tough questions and search for compelling answers. This is your education journey and research provides an important service to the community, so get involved to make the most of it!

General inquiries, email [research@tru.ca](mailto:research@tru.ca) | [tru.ca/research](http://tru.ca/research)



## Let the cars do the talking

**Dr. Ning Lu**, Assistant professor  
Computer Science

We're 10 years from 100% of vehicles communicating through the Internet of Vehicles—Dr. Ning Lu predicts—but basic foundations must be established. Lu's research project, *Real-Time Scheduling of Internet of Vehicles*, is supported by an NSERC Discovery Grant and begins with developing algorithms to improve energy conservation, traffic control, transportation scheduling and safety.



## Civil liberties and online commentary

**Dr. Daphne Jeyapal**, Assistant professor,  
Social Work

How does Canada manage the tension between national security and maintaining civil liberties? It's a question Dr. Daphne Jeyapal will spend the next two years trying to answer through her SSHRC-funded project, *Anti-terrorism or anti-activism? Examining public and policy discourses on Canada's Anti-Terrorism Act (2015) and its implications for transnational resistance*.



## Prehension Contention

**Dr. Jenni Karl**, Assistant professor,  
Psychology

Dr. Jenni Karl's research aims to rewrite the story of how humans acquired the ability to perform skilled hand movements, a story that's been widely accepted for more than 30 years. Scientists have long believed that vision was central to a human's ability to reach and grasp objects, whereas Karl's research finds that touch plays a vital role.

## Visiting research students



TRU places a high priority on providing undergraduate and graduate research opportunities. Inquiry-based and creative learning are recognized as academic foundations in the Academic Plan. No matter what your discipline, there are opportunities at TRU for you to engage in independent research and artistic inquiry. TRU professors are committed to mentoring and helping you meet your research goals.



# SHORT-TERM STUDIES

TRU has been offering non-credit international contract training programs for over 25 years. Our intensive short-term programs are strategically balanced to maximize learning opportunities while allowing participants enough time to gain an appreciation of Canadian culture and participate in carefully selected activities. The result is a rich and rewarding experience that will last a lifetime.

We offer both open enrolment programs and customized programs, all designed to meet the goals of program participants. Our open enrolment programs offer the most popular features perfected over decades of running summer and winter camp programs, resulting in a highly motivating and fun learning environment. We also work closely with international partners, including governments, educational institutions and businesses — to develop programs tailored to the needs of the client.

For more information and to apply, visit [truworld.ca/itc](http://truworld.ca/itc)



## All programs include:

- Homestay accommodation (including meals)
- All recreational and cultural activities
- Airport pick-up and drop-off
- TRU campus and city orientation
- Support from advisors and instructors

---

## Language and Culture Open Programs

All of our Language and Culture programs are designed to provide students with the English skills they need to fully participate in all activities, with emphasis placed on the core areas: speaking, listening, writing, reading, vocabulary and grammar. All students will participate in hands-on workshops that enable students to develop and expand their intercultural communications skills. In addition, we offer a series of very practical and relevant electives designed to boost our student's learning opportunities. These programs include an orientation to TRU's campus and the City of Kamloops.

We offer students the choice of one elective from the options below. Every effort will be made to ensure each student gets their first choice, but this may not always be possible. In these cases, second and third preferences will be taken into consideration.

- Applied English
- Global Citizenship
- Healthy Choices
- Leadership Skills
- STEM Skills
- Study Skills
- Sustainability
- Workplace English

**Four-week Summer Language and Culture Program** July 2 – 26, 2019

**Three-week Summer Language and Culture Program** August 6 – 23, 2019

---

## English for Specific Purposes

We provide programs in English for Specific Purposes (ESP) that are intensive in nature and target the precise vocabulary and expressions required by the participants. These programs focus on listening, speaking, reading and writing skills, utilizing a combination of authentic materials and engaging experiential learning activities. The result is more efficient and effective communication in professional contexts.



See what students experience during our short-term programs



---

## Professional Development Programs

Our professional development programs are designed to introduce participants to the latest developments in the theory and practice of education. Cutting-edge advancements pertaining to universal themes such as classroom instruction, integration of technology, and student assessment are presented in interactive workshop formats. We deliver the course content in a communicative, learner-centred format where our instructional team takes on the role of facilitators. A popular component of the programs is the time that is allocated for small group as well as one-on-one seminars.

---

## Language and Culinary Arts Program

Our three-week program will allow students to experience Western cuisine and hospitality from a Canadian perspective. Students will learn by working side-by-side with Red Seal Chefs to learn Western food preparation and service. We will also introduce students to the variety of cuisine in Western Canada.

Our professional chefs will take students on an exciting culinary voyage of discovery each day in the TRU Culinary Arts Building. Students will learn about food preparation, products and presentation reflecting the distinct flavours and cooking styles that Canada is famous for.

---

## Language and Music Program

We have teamed up with the Kamloops Interior Summer School of Music (KISSM) to offer an exciting summer program for youths to follow their passion for music while gaining improved English skills and taking part in fun cultural and recreational activities. During music studies, students will work with professional musicians and music educators and can choose between popular band or choral classes. Musical instruments can be supplied if you do not have your own.

# INTERNATIONAL PARTNERSHIPS

TRU's transnational education programs offer students unique and exciting ways to gain global experience and earn TRU credits at one of over 50 international partner institutions.

---

## Transnational Program

### Study a TRU program at your home institution

TRU works with partner institutions to deliver our programs in partners' home countries. Over 700 students are currently enrolled in TRU adventure, business and computing science programs in China, Iceland and India.

---

## Articulation Program

### Transfer your credits towards a degree at TRU

Students can transfer credits earned at partner institutions towards TRU arts, business, computing science, education, science, technology and tourism programs.

---

## Pathway Program

### Transition from preparatory studies to TRU

TRU partners with high schools and English language schools in Canada and abroad so qualified students can complete their preparatory studies, then transition to university studies at TRU.

---

# STUDY ABROAD

---

## Study in another country

Enhance your university experience and expand your job opportunities by studying for a semester or two in another country.

---

## Student exchange

Choose from over 300 international partner institutions in more than 40 countries to study for one or two semesters, and have those credits applied towards your TRU degree.

---

## Field schools

TRU operates specialized field schools that are unique in location, course content, program length and cost. Earn credit in courses running two to six weeks and get hands-on learning.



TRU Adventure Studies Program Sea Kayak Course in West Iceland

---

## Visiting Student Program

### Study part of your program in Canada for credits

TRU has partnered with other institutions worldwide to offer a Visiting Student Program which provides students with a study opportunity in Canada. All courses taken at TRU will be counted towards university credits at the student's home institution, based on the agreement between TRU and the partner institution. Students will receive a certificate of completion at TRU and academic electives completed are eligible to receive credits from TRU.

Find out more at [truworld.ca/partner-institutions](http://truworld.ca/partner-institutions)



2018 Respiratory Therapy Field School to Cuzco, Peru. Faculty of Science Health 3200 Cardiopulmonary Health

---

## Short-term summer programs

If you're not sure about a full semester abroad, this is a great way to travel and experience another culture while earning credit towards your degree. Programs usually include accommodation, some meals and cultural activities. Two-, three-, four-, and six-week options are available from May to July.

For more information, visit [tru.ca/studyabroad](http://tru.ca/studyabroad)



# STUDY OPTIONS FOR INTERNATIONAL STUDENTS

 All course and admission information subject to change.

	LENGTH	INTAKES	ADMISSION TYPE	ESL AVAILABLE (Y/N)	CO-OP/PRACTICUM	PAGE
<b>MASTER'S DEGREES</b>	Y=YEARS, M=MONTHS, CR=CREDITS		C=COMPETITIVE O=OPEN L=LIMITED SEATS		CO-OP=C PRACTICUM=P	
Master of Business Administration (MBA)	1 - 2 y	Sept/Jan/May	C	No	No	25
Master of Education (MEd)	1.5 - 2 y	Sept	C	No	No	30
Master of Environmental Economics and Management (MEEM)	1 - 2 y	Sept/Jan/May	C	No	No	25
Master of Nursing (MN)	2 y	Sept	L	No	P	32
Master of Science in Environmental Science (MSc)	1 - 2 y	Sept/Jan/May	C	No	No	34
Master of Science in Environmental Economics and Management (thesis-based) (MScEEM)	1 - 2 y	Sept/Jan/May	C	No	No	25
<b>GRADUATE DIPLOMAS AND POST GRADUATE CERTIFICATES</b>						
Graduate Certificate in Education Studies (GCES) (Pre-MEd)	4 m + ESL	Sept/May	C	Yes	No	30
Graduate Diploma in Business Administration (GDBA: MBA, MEEM, MScEEM Foundation, Year 1)	8 m	Sept/Jan/May	C	No	No	25
Teaching English as a Second Language Certificate (TESL)	4 m	Sept/Jan/May	C	No	P	31
<b>POST-BACCALAUREATE DIPLOMAS IN BUSINESS</b>						
Economics, Accounting, Business Administration, Entrepreneurship, Finance, Human Resource Management, International Business, Marketing, Supply Chain Management	2 y (60 cr)	Sept/Jan/May	O	Yes	No	25-27
<b>POST-BACCALAUREATE DIPLOMAS &amp; CERTIFICATES IN TOURISM</b>						
Adventure Studies	1.5 y (39 cr)	Sept/Jan	L	No	No	22
Innovation and Entrepreneurship in Tourism, Managing Festivals and Events, Resort Experience Management, Tourism Destination Development, Tourism Experience Management	2 y (54 cr)	Sept/Jan	L	No	P	22-23
Post-Baccalaureate Certificate in Tourism	1 y (30 cr)	Sept/Jan	L	No	No	22
<b>JURIS DOCTOR</b>						
Law – Juris Doctor	3 y	Sept	C	No	P	33
<b>UNDERGRADUATE DEGREES</b>						
Bachelor of Arts <i>Majors: Communication (New Media Studies &amp; Public Relations), Criminology, Economics, Economics &amp; Math, Economics &amp; Political Studies, English, Geography &amp; Environmental Studies, History, Math, Philosophy, Psychology, Sociology, Theatre</i>	4 y (120 cr)	Sept/Jan/May	O	Yes	C	24
Bachelor of Business Administration <i>Majors: Accounting, Economics, Entrepreneurship, Finance, Human Resource Management, International Business, Marketing, Supply Chain Management</i>	4 y (120 cr)	Sept/Jan/May	O	Yes	C	27
Double Degrees: Bachelor of Business Administration & Bachelor of Computing Science, Bachelor of Arts & Bachelor of Business Administration <i>*Duration: 5 years or 1 year if proper degree was obtained</i>	5 y (150 cr)*	Sept/Jan/May	O	Yes	C	27
Bachelor of Computing Science	4 y (120 cr)	Sept/Jan/May	O	Yes	C	34
Bachelor of Education (Elementary)	5 y (150 cr)	Sept	C	No	P	30
Bachelor of Education (Secondary) Science, Technology, Engineering and Mathematics (STEM)	5 y (150 cr)	Sept	C	No	P	30
Bachelor of Engineering in Software Engineering	5y	Sept	C	No	P	34
Bachelor of Fine Arts (Visual Arts)	4 y (120 cr)	Sept/Jan	O	Yes	C	24
Bachelor of Health Science (3rd year entry)	2 y (60 cr)	Sept/Jan	C	No	C	32
Bachelor of Interdisciplinary Studies (3rd year entry)	4 y (120 cr)	Sept/Jan	L	No	C	24
Bachelor of Journalism (Journalism, Public Relations)	4 y (120 cr)	Sept/Jan	L	No	P	24
Bachelor of Natural Resource Science	4 y (120 cr)	Sept	L	No	C	34
Bachelor of Science <i>Majors: Animal Biology, Biology, Cellular, Molecular, Chemical Biology, Chemistry, Computing Science, Computing Science &amp; Mathematics, Ecology &amp; Environmental Biology, Environmental Chemistry, General Science, Mathematics, Mathematics &amp; Economics, Mathematical Sciences, Molecular &amp; Microbial Biology, Physics, Pre-professional Health Science</i>	4 y (120 cr)	Sept/Jan/May	O	Yes	C	34

	LENGTH	INTAKES	ADMISSION TYPE	ESL AVAILABLE (Y/N)	CO-OP/PRACTICUM	PAGE
Bachelor of Science in Nursing	4 y (120 cr)	Sept	C	No	P	32
Bachelor of Social Work (3rd year admission)	4 y (120 cr)	Sept	C	No	P	31
Bachelor of Technology (3rd year entry)	2 y (60 cr)	Sept/Jan	L	No		36
Bachelor of Tourism Management <i>Concentrations: Adventure Studies, Festivals &amp; Events, Innovation &amp; Entrepreneurship, Resort Experience</i>	4 y (120 cr)	Sept/Jan/May	L	No	C	23
Engineering – first & second year transfer to UBC and UVic	1 - 2 y	Sept	C	No	C	35
Forestry – first & second year transfer to UBC	1 - 2 y	Sept	L	No		35
<b>DIPLOMA PROGRAMS</b>						
Accounting Technician	2 y (60 cr)	Sept/Jan/May	O	Yes		27
Adventure Guide	2 y (60 cr)	Sept	L	No	C	23
Architectural & Engineering Technology (ARET)	3 y	Sept	C	No		35
Applied Agriculture & Enterprise Management (Williams Lake campus only)	2 y (60 cr)	Aug/Nov/Jan/May	L	No	P	35
Associate of Commerce & Business Administration	2 y	Sept/Jan/May	O	Yes		27
Computing Science	2 y (60 cr)	Sept/Jan/May	O	Yes	C	34
Early Childhood Education	2 y (60 cr)	Sept	L	No	P	31
Events & Conventions Management	2 y (60 cr)	Sept/Jan	L	No	P	23
Horticulture Management	2 y	Aug	L	No	P	36
Instrumentation Engineering Technology	2 y (62-65 cr)	Sept	L	No		35
Management	2 y (60 cr)	Sept/Jan/May	O	Yes	C	27
Police & Justice Studies	2 y (60 cr)	Sept	L	No		33
Resort & Hotel Management	2 y (60 cr)	Sept/Jan	L	No	P	23
Respiratory Therapy	3 y	Sept	C	No	P	32
Sport Event Management	2 y (60 cr)	Sept/Jan	L	No	P	23
Tourism Management	2 y	Sept/Jan	L	No	P	23
Visual Arts	2 y (60 cr)	Sept	O	Yes		tru.ca
Water & Wastewater Technology	2 y (60 cr)	Aug	L	No	P	36
<b>CERTIFICATE PROGRAMS</b>						
Adventure Guide	1 y (30 cr)	Sept	L	No		23
Business Foundations	1 y	Sept	O	Yes		tru.ca
Culinary Arts Certificate (Red Seal)	2 y	Aug	L	No		23
Horticulture	1 y	Aug	L	No		36
Water & Wastewater Utilities	1 y	Aug	L	No		36
<b>UNIVERSITY PREPARATION &amp; STUDENT DEVELOPMENT</b>						
Adult Basic Education & BC Adult Graduation Diploma	N/A	Sept/Jan/May				tru.ca
English as a Second Language (ESL)	N/A	Sept/Jan/May				21
University Preparation Courses	N/A	Sept/Jan/May				21

#### Undergraduate Tuition (ESL, U-Prep and Academic)

- \$6,900/semester (up to 12 credits/4 courses)
- \$8,400/semester (15 credits/5 courses)
- each additional credit: \$500 (fall/winter) \$575 (summer)

#### Post-Baccalaureate Diploma Tuition

- \$1,725/course (\$575/credit)
- \$5,175/semester (9 credits/3 courses)
- \$6,900/semester (12 credits/4 courses)
- \$8,625/semester (15 credits/5 courses)

#### Graduate Tuition

- GDBA (aka MBA/MEEM/MScEEM year 1): \$2,334/course (up to \$14,000 total, max 6 courses)
- MBA (year 2): \$30,571
- MEEM/MScEEM (year 2): \$33,630
- GCES (Pre-MEd): \$7,900/semester
- MEd (3 semesters): \$8,760/semester, \$4,325/4th semester, if needed
- MSc (2 years/6 semesters): \$5,839/semester
- MN (2 years/6 semesters): \$5,217/semester

Tuition fee does not include general fees (TRUSU dues, U-Pass, Health and Dental insurance etc.)



# INTERNATIONAL ACCREDITATIONS AND TRANSFER CREDIT



---

## International Baccalaureate (IB)

The IB diploma is accepted for admission to TRU. Transfer credit will be granted for higher level courses completed with a score of 5 or higher. Students have the option to decline the transfer credit if they wish to complete the course(s) at the university.

To transfer credits to arts, business or science, you must have:

- Official IB transcript (sent to International Admissions office directly from the testing centre)
- Higher learning courses only
- Grade of 5, 6 or 7

---

## Advanced Placement (AP)

AP exams will be accepted for admission to TRU. Official transcripts must be provided from the College Board. To transfer credits you must have:

- Official AP transcript
- Grade of 4 or 5

---

## General Certificate of Educational Studies (GCE)

Students completing their GCE will be considered for admission on a combination of factors. For admission to TRU you will need:

- A minimum of two Advanced (A) level courses and two Advanced Subsidiary (AS) level courses or
- A minimum of two A-level courses and three Ordinary (O) level subjects
- Completion of O levels (university preparation courses will need to be completed at TRU)

---

## GCE Advanced level (A-level exams)

Transfer credit to arts, science, or business programs are available for approved A-level courses with a passing grade of A or B. To transfer credits, you must provide official GCE transcripts of A-level courses.

---

## General Education Development (GED) test

GED is an accepted high-school equivalent for admission to TRU under the following conditions:

- Must be 17 years of age
- Will need IELTS score
- Will need to take Accuplacer math assessment at TRU

---

## Transfer credit

If you have completed courses at another recognized post-secondary institution, you may be able to transfer those courses to TRU. You will need to indicate your intention to apply for transfer credits on your application form. You must provide original transcripts or attested copies from the respective Registrar and course outlines (syllabus) at least four months prior to your arrival at TRU, otherwise you may not be eligible for transfer credit in your first semester. Transcripts and course outlines must be officially translated into English.

For more information visit [tru.ca/enrichedprograms](https://tru.ca/enrichedprograms)

# ENGLISH LANGUAGE UPGRADES AND U-PREP

TRU offers English as a Second Language (ESL) and University preparation (U-prep). Our ESL program provides quality language training for students who plan to go on to post-secondary study, focusing on English for academic purposes.

Each of the five levels of TRU's ESL program take one semester to complete. Students with no official test score will take an English Placement Test (EPT) upon arrival at TRU and will be placed in the appropriate level of English language study as indicated in the chart below. Students with an official test score can enter ESL or academic courses without taking the TRU EPT. Please refer to the chart for entry levels.

**Note:** To secure registration for the courses you need, please submit your English test scores two months before arriving at TRU.

## Academic requirements

- Secondary school completion (high school graduation)
- Transcripts from all previous post-secondary institutions (if applicable)
- Other requirements vary by program.
- For detailed requirements, please refer to pages 22–36 or go to [tru.ca/programs](http://tru.ca/programs)



## The TRU Advantage



1. English Placement Test (EPT) available
2. IELTS and TOEFL scores are accepted
3. Academic ESL designed for university preparation
4. Can combine ESL and academic courses for credit in Levels 4 and 5
5. 20 hours of classroom instruction per week
6. Language labs and activities

LEVEL 1 5 ESL Courses	LEVEL 2 5 ESL Courses	LEVEL 3 5 ESL Courses	LEVEL 4 4 ESL Courses + 1 Academic Course	LEVEL 5 2 ESL Courses + 3 Academic Courses
<b>Entry Requirements</b> <ul style="list-style-type: none"> <li>• TRU English Placement Test required</li> <li>• Suggested entry requirement TOEFL iBT 20</li> </ul>	<b>Entry Requirements</b> <ul style="list-style-type: none"> <li>• Level 1 completion</li> <li>• TRU English Placement Test required</li> </ul>	<b>Entry Requirements</b> <ul style="list-style-type: none"> <li>• IELTS: 5.0+</li> <li>• TOEFL iBT: 61+</li> <li>• TOEFL PBT: 500–529</li> <li>• MELAB: 69+</li> <li>• CanTEST: 3.5+</li> <li>• CAEL: Overall 40+</li> <li>• TRU ESL Level 2</li> </ul>	<b>Entry Requirements</b> <ul style="list-style-type: none"> <li>• IELTS: 5.5+ no band below 5.0</li> <li>• TOEFL iBT: 71+</li> <li>• TOEFL PBT: 530–549</li> <li>• MELAB: 74+</li> <li>• CanTEST: 4.0+ with no component below 3.5</li> <li>• CAEL: Overall 50+ no subtest below 40</li> <li>• TRU ESL Level 3</li> </ul>	<b>Entry Requirements</b> <ul style="list-style-type: none"> <li>• IELTS: 6.0+ no band below 5.5</li> <li>• TOEFL iBT: 80+</li> <li>• TOEFL PBT: 550–569</li> <li>• MELAB: 77+</li> <li>• CanTEST: 4.0+ with no component below 4.0</li> <li>• CAEL: Overall 60+ no subtest below 50</li> <li>• TRU ESL Level 4</li> </ul>
Level 1 completion gains <b>direct entry to Level 2</b>	Level 2 completion gains <b>ESL Foundations Certificate Award and direct entry to Level 3</b>	Level 3 completion gains <b>ESL Intermediate Certificate Award and direct entry to Level 4</b>	Level 4 completion gains <b>ESL Academic Preparation Certificate and direct entry to Level 5</b>	Level 5 completion gains <b>ESL Advanced Academic Preparation Certificate and direct entry to academic study</b>
<b>DIRECT ENTRY INTO ACADEMIC STUDY</b>				
<b>Entry Requirements:</b> <ul style="list-style-type: none"> <li>• IELTS: 6.5+ with no bands below 6.0</li> <li>• TOEFL iBT: 88+ with no section below 20</li> <li>• TOEFL PBT: 570+, TWE 4.5+</li> <li>• MELAB: 81+</li> <li>• CanTEST: 4.5+ with no component below 4.0</li> <li>• CAEL: Overall 70+, no subtest below 60</li> <li>• PTE: 58+</li> <li>• TRU ESL Level 5</li> <li>• DAAD/CEFR:                             <ul style="list-style-type: none"> <li>• B2, visiting international students only</li> <li>• C1 for degree seeking students.</li> </ul> </li> </ul>				



## Programs & Admission Requirements

# ADVENTURE, CULINARY ARTS & TOURISM

Please refer to [tru.ca/programs](http://tru.ca/programs) for the most updated programs and admission requirements.

PROGRAM NAME	MINIMUM REQUIREMENTS	SAMPLE JOBS	SAMPLE COURSES
<p><b>Post Baccalaureate Diploma in Adventure Studies</b></p> <p>Students acquire a foundation in tourism-related subjects including marketing, cultural issues, applied research methods, product operations and risk management. Students are then free to explore a range of related topics such as rock climbing, surfing and skiing as well as programming, consulting and ecotourism.</p> <p><a href="http://tru.ca/tourism">tru.ca/tourism</a></p>	<ul style="list-style-type: none"> <li>Any bachelor's degree</li> <li>Math 12 or equivalent</li> <li>IELTS 6.5 no bands below 6.0 or TOEFL 88 no section less than 20</li> </ul> <p><b>Limited seats</b></p>	<ul style="list-style-type: none"> <li>Eco-Designer</li> <li>Search and Rescue Responder</li> <li>Avalanche Technician</li> </ul>	<ul style="list-style-type: none"> <li>Contemporary Perspectives in Eco and Adventure</li> <li>Adventure and Sport Marketing</li> <li>Consulting in Adventure</li> </ul>
<p><b>Post Baccalaureate Diploma in Innovation and Entrepreneurship in Tourism</b></p> <p>Students will gain an understanding of issues fundamental in tourism planning, marketing and service provision. Features some courses based on small and new tourism enterprise, as well as creation and product development.</p> <p><a href="http://tru.ca/tourism">tru.ca/tourism</a></p>	<ul style="list-style-type: none"> <li>Any bachelor's degree</li> <li>IELTS 6.5 no bands below 6.0 or TOEFL 88 no section less than 20</li> </ul> <p><b>Limited seats</b></p>	<ul style="list-style-type: none"> <li>Small Business Owner</li> <li>Travel Consultant</li> <li>Events Manager</li> </ul>	<ul style="list-style-type: none"> <li>Adventure and Sport Marketing</li> <li>Consulting in Adventure</li> <li>Programming Experiential Activities</li> </ul>
<p><b>Post Baccalaureate Diploma in Managing Festivals and Events</b></p> <p>A focus on event logistics and tourism will also aid in developing the student's knowledge of event/festival management.</p> <p><a href="http://tru.ca/tourism">tru.ca/tourism</a></p>	<ul style="list-style-type: none"> <li>Any bachelor's degree</li> <li>IELTS 6.5 no bands below 6.0 or TOEFL 88 no section less than 20</li> </ul> <p><b>Limited seats</b></p>	<ul style="list-style-type: none"> <li>Festival Coordinator</li> <li>Event Planner</li> <li>Tourism Coordinator</li> </ul>	<ul style="list-style-type: none"> <li>The Culture of Events</li> <li>Event Tourism</li> <li>Event Logistics</li> </ul>
<p><b>Post Baccalaureate Diploma in Resort Experience Management</b></p> <p>Focus on resort operations and management in conjunction with managing the overall tourism experience.</p> <p><a href="http://tru.ca/tourism">tru.ca/tourism</a></p>	<ul style="list-style-type: none"> <li>Any bachelor's degree</li> <li>IELTS 6.5 no bands below 6.0 or TOEFL 88 no section less than 20</li> </ul> <p><b>Limited seats</b></p>	<ul style="list-style-type: none"> <li>Guest Experience Manager</li> <li>Resort Manager</li> <li>Customer Relations Coordinator</li> </ul>	<ul style="list-style-type: none"> <li>Resort Management</li> <li>Managing Small Tourism Enterprises</li> <li>Resort Hospitality Operations and Performance</li> </ul>
<p><b>Post Baccalaureate Diploma in Tourism Destination Development</b></p> <p>Topics include understanding and influencing tourist behaviour, business strategy, small business management, information technology and managing service operations in a global setting.</p> <p><a href="http://tru.ca/tourism">tru.ca/tourism</a></p>	<ul style="list-style-type: none"> <li>Any bachelor's degree</li> <li>IELTS 6.5 no bands below 6.0 or TOEFL 88 no section less than 20</li> </ul> <p><b>Limited seats</b></p>	<ul style="list-style-type: none"> <li>Senior Project Manager</li> <li>Sales Agent</li> <li>Marketing &amp; Sales Executive</li> </ul>	<ul style="list-style-type: none"> <li>Destination Marketing Organizations</li> <li>Community and Cultural Issues in Tourism</li> <li>Tourism and Sustainable Development</li> </ul>
<p><b>Post Baccalaureate Diploma in Tourism Experience Management</b></p> <p>Acquire a foundation in tourism studies including tourism experience marketing, environmental issues, community and cultural issues, applied research methods and product development and innovation.</p> <p><a href="http://tru.ca/tourism">tru.ca/tourism</a></p>	<ul style="list-style-type: none"> <li>Any bachelor's degree</li> <li>IELTS 6.5 no bands below 6.0 or TOEFL 88 no section less than 20</li> </ul> <p><b>Limited seats</b></p>	<ul style="list-style-type: none"> <li>Events Manager</li> <li>Travel Operations Coordinator</li> <li>Guest Services Manager</li> </ul>	<ul style="list-style-type: none"> <li>Managing the Tourist Experience</li> <li>The Social Side of Tourism</li> <li>Programming Experiential Activities</li> </ul>
<p><b>Post-Baccalaureate Certificate in Tourism</b></p> <p>Students gain basic knowledge and skills for working in the general field of tourism or for pursuing further, more specialized education in various tourism sectors.</p> <p><a href="http://tru.ca/tourism">tru.ca/tourism</a></p>	<ul style="list-style-type: none"> <li>Any bachelor's degree</li> <li>IELTS 6.5 no bands below 6.0 or TOEFL 88 no section less than 20</li> </ul> <p><b>Limited seats</b></p>	<ul style="list-style-type: none"> <li>Reservations Agent</li> <li>Guest Experience Centre Representative</li> <li>Travel Consultant</li> </ul>	<ul style="list-style-type: none"> <li>Tourism Behaviour</li> <li>Recreation and Tourism Management</li> <li>Tourism in a Global Environment</li> </ul>

<h3>Bachelor of Tourism Management</h3> <p>Become a leader and manager in the expanding field of tourism. The BTM focuses on key issues in local, regional, national and international tourism, with opportunities for international experience through study abroad and field schools. Gain the skills and confidence to develop your own tourism business and fill industry demand for managers. Receive a Tourism Management Diploma after two years.</p> <p><b>Concentrations:</b> Adventure Studies, Festivals &amp; Events, Innovation &amp; Entrepreneurship, Resort Experience</p> <p><b>tru.ca/btm</b></p>	<ul style="list-style-type: none"> <li>All English 12 (73%), or IELTS 6.5, or equivalent</li> <li>Math 11 (60%), or equivalent</li> </ul> <p><b>Limited seats</b></p>	<ul style="list-style-type: none"> <li>Tourist Information Centre Manager</li> <li>Travel Agency Manager</li> <li>Hotel Manager</li> <li>Event Organizer</li> <li>Marketing Executive</li> </ul>	<ul style="list-style-type: none"> <li>Culture, History, and Geography</li> <li>Destination Marketing</li> <li>Hospitality Law</li> <li>People, Places, and the Toured Landscape</li> <li>Environmental Issues in Tourism</li> </ul>
<h3>Adventure Guide Diploma</h3> <p>Setting the standard around the world for a broad spectrum of wilderness guide training, this intensive program will prepare you for exciting leadership positions in outdoor skills instruction and guiding. The field portion of your classes access BC's exceptional recreational resources for whitewater and ocean pursuits, climbing and skiing.</p> <p><b>tru.ca/adventure</b></p>	<ul style="list-style-type: none"> <li>All English 12 (67%), or IELTS 6.5, or equivalent</li> <li>Math 11 (67%), or equivalent</li> <li>Completed Adventure Studies application form</li> <li>19 years of age by start of program</li> </ul> <p><b>Limited seats</b></p>	<ul style="list-style-type: none"> <li>Ski Instructor</li> <li>Avalanche Technician</li> <li>Hiking Guide</li> <li>SAR Team Member</li> <li>Sea Kayak Guide</li> </ul>	<ul style="list-style-type: none"> <li>Search and Rescue Management</li> <li>Expedition Planning and Leadership</li> <li>The Adventure Tourism Industry</li> <li>The Business of Adventure</li> </ul>
<h3>Events &amp; Conventions Management Diploma</h3> <p>Apply your creativity and keen eye for detail toward a career in event management. This program provides a practical overview of the functions, skills and knowledge required to successfully plan, organize, manage, promote and evaluate a festival, convention, tradeshow or special event.</p> <p><b>tru.ca/ecm</b></p>	<ul style="list-style-type: none"> <li>All English 12 (73%), or IELTS 6.5, or equivalent</li> <li>Math 11 (60%), or equivalent</li> </ul> <p><b>Limited seats</b></p>	<ul style="list-style-type: none"> <li>Conference Planner</li> <li>Event Planner</li> <li>Festival Organizer</li> <li>Trade Show Planner</li> <li>Convention Coordinator</li> </ul>	<ul style="list-style-type: none"> <li>Catering and Service Management</li> <li>Managing Festivals and Events</li> <li>Fundraising for Non-Profit Organizations</li> </ul>
<h3>Resort &amp; Hotel Management Diploma</h3> <p>Get what you need to go places in the hospitality industry as a tourism professional. A blend of theory and hands-on learning gives you the technical and managerial skills you need to work in the hotel and resort industry in Canada and abroad.</p> <p><b>tru.ca/rhm</b></p>	<ul style="list-style-type: none"> <li>All English 12 (73%), or IELTS 6.5, or equivalent</li> <li>Foundations of Math 11 (60%), or equivalent</li> </ul> <p><b>Limited seats</b></p>	<ul style="list-style-type: none"> <li>Hotel General Manager</li> <li>Sales Manager</li> <li>Food and Beverage Manager</li> </ul>	<ul style="list-style-type: none"> <li>Organizational Leadership in Tourism</li> <li>Hospitality Law</li> <li>Resort and Hotel Operations</li> <li>Hotel Resources Management</li> </ul>
<h3>Sport Event Management Diploma</h3> <p>Develop your business skills and event management expertise. Learn to organize and market sports events, recruit and motivate volunteers, and how to raise funds.</p> <p><b>tru.ca/sem</b></p>	<ul style="list-style-type: none"> <li>All English 12 (73%), or IELTS 6.5, or equivalent</li> <li>Math 11 (60%), or equivalent</li> </ul> <p><b>Limited seats</b></p>	<ul style="list-style-type: none"> <li>Entrepreneur</li> <li>Sports Teams Manager</li> <li>Lifestyle/Sporting Event Coordinator</li> <li>Fundraising/Marketing Manager</li> </ul>	<ul style="list-style-type: none"> <li>The World of Events</li> <li>Staging Special Events</li> <li>Sport Event Marketing</li> <li>Field Experience</li> </ul>
<h3>Tourism Management Diploma</h3> <p>Explore your options with a two-year diploma that gives you a good sampling of the specialties you can take in Tourism Management. Students enrolled in Bachelor of Tourism Management who wish to exit the program upon completion of Year 2 can apply for this diploma.</p> <p><b>tru.ca/tourism</b></p>	<ul style="list-style-type: none"> <li>All English 12 (73%), or IELTS 6.5, or equivalent</li> <li>Math 11 (60%), or equivalent</li> </ul> <p><b>Limited seats</b></p>	<ul style="list-style-type: none"> <li>Event Manager</li> <li>Hotel and Resort Manager</li> <li>Travel Counsellor</li> </ul>	<ul style="list-style-type: none"> <li>Marketing and Customer Service</li> <li>People, Places, and the Toured Landscape</li> <li>Environmental Issues in Tourism</li> </ul>
<h3>Adventure Guide Certificate</h3> <p>This entry-level, eight-month program combines classroom instruction with courses in canoeing, rock climbing, ice climbing, mountaineering, whitewater kayaking and more.</p> <p><b>tru.ca/adventure</b></p>	<ul style="list-style-type: none"> <li>All English 12 (67%), or IELTS 6.5, or equivalent</li> <li>Math 11 (67%), or equivalent</li> <li>19 years of age by start of program</li> </ul> <p><b>Limited seats</b></p>	<ul style="list-style-type: none"> <li>Ski Instructor</li> <li>Sea Kayak Guide</li> <li>Canoe Instructor</li> <li>Raft Guide Technician</li> <li>Ocean Surfing</li> </ul>	<ul style="list-style-type: none"> <li>Wilderness Travel</li> <li>Mountaineering/Skiing</li> <li>Swift Water Rescue Technician</li> <li>Ocean Surfing</li> </ul>
<h3>Culinary Arts Certificate (Red Seal)</h3> <p>Learn the fundamentals and the artistry of food preparation in a hands-on environment that includes practical experience producing international gourmet fare for our on-campus public cafeteria. Earn Professional Cook 1 and 2 certifications in three semesters (44 weeks), with the option to complete a Professional Cook 3 Apprenticeship (Red Seal).</p> <p><b>tru.ca/culinary</b></p>	<ul style="list-style-type: none"> <li>Grade 10, or equivalent</li> <li>Food Safe Level 1</li> <li>Successful Entry Assessment: see tru.ca/assessment</li> </ul> <p><b>Limited seats</b></p>	<ul style="list-style-type: none"> <li>Baker</li> <li>Cook/Chef</li> <li>Chocolatier</li> <li>Restaurant Manager</li> <li>Caterer</li> </ul>	<ul style="list-style-type: none"> <li>Safety and Sanitary Standards</li> <li>Menu Planning</li> <li>Ingredients and Nutritional Properties</li> <li>Production Procedures</li> </ul>

\* Students who do not meet direct entry requirements to join Tourism Faculty programs will be offered a seat in the Pre-Tourism program. This program allows students to do all required upgrades to qualify for Tourism.

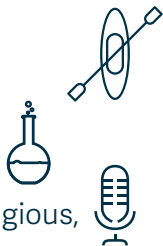


# ARTS, HUMANITIES & SOCIAL SCIENCE

PROGRAM NAME	MINIMUM REQUIREMENTS	SAMPLE JOBS	SAMPLE COURSES
<p><b>Bachelor of Arts</b></p> <p>The BA degree offers a variety of majors and minors while ensuring a comprehensive foundation in the liberal arts. Flexible with opportunities for research, co-op, field schools and study abroad. Cultivate skills like communication, critical thinking, teamwork and leadership, and apply your knowledge in real-world settings.</p> <p><b>Majors:</b> Communication (New Media Studies &amp; Public Relations), Criminology, Economics, Economics &amp; Math, Economic &amp; Political Studies, English, Geography &amp; Environmental Studies, History, Math, Philosophy, Psychology, Sociology, Theatre</p> <p><b>Minors:</b> Creative Writing, Environmental Economics &amp; Sustainable Development, Geography, Management, Political Studies, Visual Arts</p> <p><a href="http://tru.ca/ba">tru.ca/ba</a></p>	<ul style="list-style-type: none"> <li>All English 12 (73%), or IELTS 6.5, or equivalent</li> </ul>	<ul style="list-style-type: none"> <li>Project Coordinator</li> <li>Researcher</li> <li>Public Relations Specialist</li> <li>Teacher</li> <li>Counsellor</li> <li>Communications Specialist</li> <li>Actor</li> <li>Historian</li> </ul>	<ul style="list-style-type: none"> <li>Introduction to Psychology</li> <li>Race and Ethnic Relations</li> <li>Labour Economics</li> <li>Social and Political Thought</li> </ul>
<p><b>Bachelor of Interdisciplinary Studies</b></p> <p>Explore your interests without concentrating in a specific major in the BIS degree program. Find your passions through a varied learning experience and customize your curriculum, with opportunities for co-op.</p> <p><a href="http://tru.ca/bis">tru.ca/bis</a></p>	<ul style="list-style-type: none"> <li>Third-year entry.</li> <li>All English 12 (73%), or IELTS 6.5, or equivalent</li> <li>See <a href="http://tru.ca/calendar">tru.ca/calendar</a> for admission requirements.</li> </ul> <p><b>Competitive admission</b></p>	<p><i>Job options are endless depending on your choice of courses.</i></p>	<p><i>Courses will vary depending on your interests.</i></p>
<p><b>Bachelor of Journalism</b></p> <p>The practical focus of the BJour degree is on writing, editing, interviewing, photography and working with technology to produce print and online publications. Explore theory such as media law and journalistic ethics, and cultivate decision-making and critical-thinking skills. Prepare for a career in news organizations or communication and media liaison departments.</p> <p><b>Major:</b> Public Relations</p> <p><a href="http://tru.ca/journalism">tru.ca/journalism</a></p>	<ul style="list-style-type: none"> <li>All English 12 (73%), or IELTS 6.5, or equivalent</li> <li>Writing sample</li> </ul> <p><b>Limited seats</b></p>	<ul style="list-style-type: none"> <li>Magazine Journalist</li> <li>Digital Copywriter</li> <li>Public Relations Officer</li> <li>Publisher</li> <li>Broadcast Journalist</li> </ul>	<ul style="list-style-type: none"> <li>Media Theory and History</li> <li>News Writing</li> <li>Media Law and Ethics</li> <li>Professional Business and Technical Writing</li> <li>Literary Journalism</li> </ul>
<p><b>Bachelor of Fine Arts (Visual Arts)</b></p> <p>Explore your creativity in the BFA degree, through a broad range of studio and theoretical courses in a variety of media. TRU's Fine Arts facilities include 26,000 square feet of workshops and studio space and an art gallery for student and faculty exhibitions.</p> <p><a href="http://tru.ca/finearts">tru.ca/finearts</a></p>	<ul style="list-style-type: none"> <li>All English 12 (73%), or IELTS 6.5, or equivalent</li> </ul>	<ul style="list-style-type: none"> <li>Art Director</li> <li>Fashion Designer</li> <li>Theatre Manager</li> <li>Photojournalist</li> <li>Sound Effects Designer</li> <li>Artist</li> </ul>	<ul style="list-style-type: none"> <li>Sculpture</li> <li>Painting</li> <li>Exhibition Curating</li> <li>Photography</li> <li>Production and Stage Management</li> </ul>

OVER  
**100**  
STUDENT  
CLUBS

academic, athletic,  
ethnic, political, religious,  
common interest



STUDENTS  
FROM  
**89** COUNTRIES  
STUDY AT TRU

**WORK**

IN CANADA

for up to  
**3** YEARS  
after graduation



# BUSINESS, ECONOMICS & MANAGEMENT

PROGRAM NAME	MINIMUM REQUIREMENTS	SAMPLE JOBS	SAMPLE COURSES
<p><b>Master of Business Administration</b></p> <p>The TRU MBA is designed to meet the needs of our students, who can customize their learning experience with maximum flexibility and unparalleled choice. Three program completion options: graduate project, graduate thesis and course-based completion project.</p> <p><a href="http://tru.ca/mba">tru.ca/mba</a></p>	<ul style="list-style-type: none"> <li>• 3 or 4-year undergraduate degree (min GPA 3.0 on scale of 4.0 in last 60 credits)</li> <li>• IELTS score of 7.0 no bands below 6.5 (TOEFL of 100 no bands below 20) or completion of an undergrad degree at English Language University in a country where English is their first official language</li> <li>• Quantitative and computing skills</li> </ul> <p><i>Competitive admission</i></p>	<ul style="list-style-type: none"> <li>• Management Consultant</li> <li>• Investment Banker</li> <li>• Management Analyst</li> <li>• Marketing Manager</li> </ul>	<ul style="list-style-type: none"> <li>• Strategic Management</li> <li>• Decision Analysis and Management</li> <li>• Innovation and Entrepreneurship</li> <li>• Research Methods, Preparation and Presentation</li> </ul>
<p><b>Master of Environmental Economics and Management</b></p> <p><i>OR</i></p> <p><b>Master of Science in Environmental Economics and Management</b></p> <p>A course-based program providing graduates with a broad knowledge of the business environment, advanced management skills and specialized knowledge in environmental economics and sustainability.</p> <p>MScEEM will complete their studies through a graduate thesis or project.</p> <p><a href="http://tru.ca/meem">tru.ca/meem</a></p>	<ul style="list-style-type: none"> <li>• 3 or 4-year undergraduate degree (min GPA 3.0 on scale of 4.0 or local equivalent) in last 60 credits</li> <li>• Successfully completed each course in the GDBA with a minimum overall GPA of 3.00</li> <li>• A minimum IELTS score of 7.0 (with no bands below 6.5), or completion of TRU ENGL 1110 or 1111 and CMNS 1290 or 1291 with a B or higher</li> <li>• Interview and references required</li> <li>• Quantitative and computing skills</li> </ul> <p><i>Competitive admission</i></p>	<ul style="list-style-type: none"> <li>• Commodities Broker</li> <li>• Environmental Coordinator</li> <li>• Sustainability Manager</li> <li>• Environmental Technical Salesperson</li> <li>• Energy Auditor</li> <li>• Environmental Planner</li> </ul>	<ul style="list-style-type: none"> <li>• Policy and Regulation for Sustainable Management</li> <li>• Principles of Environmental Economics and Natural Resource Economics</li> <li>• Applied Macroeconomics for Sustainable Management</li> <li>• Sustainable Macroeconomic Development</li> <li>• Sustainable Community Economic Development</li> </ul>
<p><b>Graduate Diploma in Business Administration</b></p> <p>The two year MBA, MEEM and MScEEM begin with the Graduate Diploma in Business Administration program which consists of 6 courses in the major subject areas of Business Administration. The GDBA offers a pathway to the 12-month MBA program for students with non-business related undergraduate degrees and ensures they have the knowledge required to be successful in the MBA program.</p> <p><a href="http://tru.ca/mba">tru.ca/mba</a></p>	<ul style="list-style-type: none"> <li>• 3 or 4-year undergraduate degree (min GPA 3.0 on scale of 4.0 in last 60 credits)</li> <li>• IELTS score of 7.0 no bands below 6.5 (TOEFL of 100 no bands below 20) or completion of an undergrad degree at English Language University in a country where English is their first official language</li> <li>• Quantitative and computing skills</li> </ul> <p><i>Competitive admission</i></p>	<ul style="list-style-type: none"> <li>• Management Consultant</li> <li>• Commercial Account Manager</li> <li>• Management, Financial Services</li> <li>• Investment Manager</li> </ul>	<ul style="list-style-type: none"> <li>• Strategic Management</li> <li>• Decision Analysis and Management</li> <li>• Innovation and Entrepreneurship</li> <li>• Research Methods, Preparation and Presentation</li> </ul>
<p><b>Post Baccalaureate Diploma in Accounting</b></p> <p>Enables students to create, examine and evaluate financial documents. Students will complete a variety of courses such as statistics, income taxation, economics, financial accounting and management accounting.</p> <p><a href="http://tru.ca/business/post-bacc">tru.ca/business/post-bacc</a></p>	<ul style="list-style-type: none"> <li>• ALL English 12 (73%), or IELTS 6.5, or equivalent</li> <li>• Math 12 or MATH 0610 or MATH 1000 (67%), or equivalent</li> <li>• ENGL1100 (67%), or equivalent</li> <li>• A bachelor's degree</li> </ul>	<ul style="list-style-type: none"> <li>• Machine Processing Accountant</li> <li>• Tax Analyst</li> <li>• Financial Control Officer</li> </ul>	<ul style="list-style-type: none"> <li>• Advanced Financial Accounting</li> <li>• Assurance</li> <li>• Intermediate Management Accounting</li> </ul>



<p><b>Post Baccalaureate Diploma in Business Administration</b></p> <p>Prepares mature students with a general business or non-business degree to build a strong foundation in all areas of business.</p> <p><a href="http://tru.ca/business/post-bacc">tru.ca/business/post-bacc</a></p>	<ul style="list-style-type: none"> <li>All English 12 (73%), or IELTS 6.5, or equivalent</li> <li>Math 12 or MATH 0610 or MATH 1000 (67%), or equivalent</li> <li>ENGL1100 (67%), or equivalent</li> <li>A bachelor's degree</li> </ul>	<ul style="list-style-type: none"> <li>Appraiser</li> <li>Commercial Lender</li> <li>Merchandising Technician</li> </ul>	<ul style="list-style-type: none"> <li>Management Information Systems</li> <li>Commercial Law</li> <li>Strategic Management</li> </ul>
<p><b>Post Baccalaureate Diploma in Economics</b></p> <p>Students acquire essential knowledge of Canadian financial markets, economic analysis, forecasting, sustainable economic development, public finance and other disciplines that prepare students to become professionals in the economics sector.</p> <p><a href="http://tru.ca/business/post-bacc">tru.ca/business/post-bacc</a></p>	<ul style="list-style-type: none"> <li>All English 12 (73%), or IELTS 6.5, or equivalent</li> <li>Math 12 or MATH 0610 or MATH 1000 (67%), or equivalent</li> <li>ENGL1100 (67%), or equivalent</li> <li>A bachelor's degree</li> </ul>	<ul style="list-style-type: none"> <li>Researching and analyzing data and trends</li> <li>Municipal sector</li> <li>Banks</li> <li>Private sector</li> </ul>	<ul style="list-style-type: none"> <li>Economics of Climate Change</li> <li>International Economics</li> <li>Government and Business</li> <li>International Financial Markets</li> </ul>
<p><b>Post Baccalaureate Diploma in Entrepreneurship</b></p> <p>Entrepreneurship majors will learn to research new business ideas, prepare formal business plans, secure initial financing and manage small businesses on an ongoing basis.</p> <p><a href="http://tru.ca/business/post-bacc">tru.ca/business/post-bacc</a></p>	<ul style="list-style-type: none"> <li>All English 12 (73%), or IELTS 6.5, or equivalent</li> <li>Math 12 or MATH 0610 or MATH 1000 (67%), or equivalent</li> <li>ENGL1100 (67%), or equivalent</li> <li>A bachelor's degree</li> </ul>	<ul style="list-style-type: none"> <li>Commercial Lending Officer</li> <li>Venture Capitalist</li> <li>Franchisee</li> </ul>	<ul style="list-style-type: none"> <li>All Business Finance</li> <li>New Venture Creation</li> <li>Small Business Management</li> </ul>
<p><b>Post Baccalaureate Diploma in Finance</b></p> <p>Students acquire a foundation in finance-related subjects including financial management, financial accounting, investments and equity analysis</p> <p><a href="http://tru.ca/business/post-bacc">tru.ca/business/post-bacc</a></p>	<ul style="list-style-type: none"> <li>All English 12 (73%), or IELTS 6.5, or equivalent</li> <li>Math 12 or MATH 0610 or MATH 1000 (67%), or equivalent</li> <li>ENGL1100 (67%), or equivalent</li> <li>A bachelor's degree</li> </ul>	<ul style="list-style-type: none"> <li>Financial Auditor</li> <li>Financial and Investment Analyst</li> <li>Securities Agent</li> </ul>	<ul style="list-style-type: none"> <li>Risk Management and Financial Engineering</li> <li>Portfolio Management</li> <li>Forecasting in Business and Economics</li> </ul>
<p><b>Post Baccalaureate Diploma in Human Resource Management</b></p> <p>Topics include leadership, teamwork in organizations, planning and staffing, employment law and organizational development.</p> <p><a href="http://tru.ca/business/post-bacc">tru.ca/business/post-bacc</a></p>	<ul style="list-style-type: none"> <li>All English 12 (73%), or IELTS 6.5, or equivalent</li> <li>Math 12 or MATH 0610 or MATH 1000 (67%), or equivalent</li> <li>ENGL1100 (67%), or equivalent</li> <li>A bachelor's degree</li> </ul>	<ul style="list-style-type: none"> <li>Recruiting Manager</li> <li>Director of Employee Engagement</li> <li>Branch Manager</li> </ul>	<ul style="list-style-type: none"> <li>Creativity and Innovation</li> <li>Human Resource Management</li> <li>Negotiation and Conflict Resolution</li> </ul>
<p><b>Post Baccalaureate Diploma in International Business</b></p> <p>Prepares students for positions as managers and entrepreneurs in the global economy.</p> <p><a href="http://tru.ca/business/post-bacc">tru.ca/business/post-bacc</a></p>	<ul style="list-style-type: none"> <li>All English 12 (73%), or IELTS 6.5, or equivalent</li> <li>Math 12 or MATH 0610 or MATH 1000 (67%), or equivalent</li> <li>ENGL1100 (67%), or equivalent</li> <li>A bachelor's degree</li> </ul>	<ul style="list-style-type: none"> <li>Foreign Affairs Specialist</li> <li>Corporate Trainer</li> <li>International Account Manager</li> </ul>	<ul style="list-style-type: none"> <li>Global Management</li> <li>International Trade Law and Logistics</li> <li>Global Entrepreneurship</li> </ul>
<p><b>Post Baccalaureate Diploma in Marketing</b></p> <p>Students acquire a foundation in marketing-related subjects including consumer behaviour, marketing research, strategy, e-commerce, professional selling, brand management and forecasting.</p> <p><a href="http://tru.ca/business/post-bacc">tru.ca/business/post-bacc</a></p>	<ul style="list-style-type: none"> <li>All English 12 (73%), or IELTS 6.5, or equivalent</li> <li>Math 12 or MATH 0610 or MATH 1000 (67%), or equivalent</li> <li>ENGL1100 (67%), or equivalent</li> <li>A bachelor's degree</li> </ul>	<ul style="list-style-type: none"> <li>Digital Marketing Manager</li> <li>Campaign Manager</li> <li>Marketing Director</li> </ul>	<ul style="list-style-type: none"> <li>Advanced Marketing Research</li> <li>International Marketing</li> <li>Services Marketing</li> </ul>

**Post Baccalaureate Diplomas** provide mature students with general business or non-business degrees with a specialization in a functional area of business, to enhance their employment opportunities. International students can learn English while experiencing Canadian culture, and studying in a compressed format.

*Minimum Requirements: Students may commence their studies while they upgrade their mathematics and English*

<p><b>Post Baccalaureate Diploma in Supply Chain Management</b></p> <p>Program focuses on fundamental aspects of supply chain management like logistics and transportation, operations management, commercial law and global management.</p> <p><a href="http://tru.ca/business/post-bacc">tru.ca/business/post-bacc</a></p>	<ul style="list-style-type: none"> <li>• All English 12 (73%), or IELTS 6.5, or equivalent</li> <li>• Math 12 or MATH 0610 or MATH 1000 (67%), or equivalent</li> <li>• ENGL1100 (67%), or equivalent</li> <li>• A bachelor's degree</li> </ul>	<ul style="list-style-type: none"> <li>• Business Development Manager</li> <li>• Inventory Manager</li> <li>• Manufacturing Manager</li> </ul>	<ul style="list-style-type: none"> <li>• Web-Enabled Business</li> <li>• Operations Management</li> <li>• Procurement Management</li> </ul>
<p><b>Bachelor of Business Administration</b></p> <p>Gain a foundation in business in the first two years of the flexible BBA program, then find your passion in a choice of majors and minors. Co-op and study abroad opportunities are available to enhance your career options. Double degree option with Computing Science is available.</p> <p><b>Majors:</b> Accounting, Economics, Entrepreneurship, Finance, Human Resource Management, International Business, Marketing, Supply Chain Management</p> <p><b>Minors:</b> Environmental Economics &amp; Sustainable Development, Financial Markets &amp; Institutions, Financial Services, Leadership, Management Information Systems, Project Management</p> <p><a href="http://tru.ca/bba">tru.ca/bba</a></p> <p><b>Dual Degrees:</b> Bachelor of Business Administration (BBA) and Bachelor of Computing Science (BCS), Bachelor of Business (BBA) and Bachelor of Arts (BA)</p> <p><a href="http://tru.ca/business/degrees/double_degree">tru.ca/business/degrees/double_degree</a></p>	<ul style="list-style-type: none"> <li>• All English 12 (73%), or IELTS 6.5, or equivalent</li> <li>• Math 12 (67%), or equivalent</li> </ul>	<ul style="list-style-type: none"> <li>• Taxation Manager</li> <li>• Investment Dealer</li> <li>• Industrial Relations Officer</li> <li>• Foreign Trade Consultant</li> <li>• Advertising Account Executive</li> <li>• Venture Capitalist</li> <li>• Supply Chains System Manager</li> </ul>	<ul style="list-style-type: none"> <li>• International Marketing</li> <li>• Small Business Management</li> <li>• Logistics and Operations</li> <li>• Macro and Micro Economics</li> <li>• Financial Accounting</li> <li>• Employment Law</li> <li>• Global Entrepreneurship</li> <li>• Consumer Behaviour</li> </ul>
<p><b>Accounting Technician Diploma</b></p> <p>Develop the skills to become an accounting para-professional working alongside professional accountants in industry and public practice. Your diploma credits count towards completion of the Bachelor of Business Administration.</p> <p><i>Exit Certificate after first year: Business Foundations Certificate</i></p> <p><a href="http://tru.ca/accounting">tru.ca/accounting</a></p>	<ul style="list-style-type: none"> <li>• All English 12 (73%), or IELTS 6.5, or equivalent</li> <li>• Math 12 (67%), or equivalent</li> <li>• Completion of Administrative Assistant Certificate, or equivalent</li> </ul>	<ul style="list-style-type: none"> <li>• Secretary</li> <li>• Sales Assistant</li> <li>• Administrative Assistant</li> <li>• Research Assistant</li> </ul>	<ul style="list-style-type: none"> <li>• Financial Management</li> <li>• Income Taxation</li> <li>• Accounting 1 &amp; 2</li> <li>• Introduction to Probability and Statistics</li> </ul>
<p><b>Associate of Commerce &amp; Business Administration Diploma</b></p> <p>This certificate allows you to complete the lower level requirements of a business degree at TRU, before transferring to another university such as Simon Fraser University or University of British Columbia for your third and fourth years.</p> <p><a href="http://tru.ca/business/certificates_diplomas">tru.ca/business/certificates_diplomas</a></p>	<ul style="list-style-type: none"> <li>• All English 12 (73%), or IELTS 6.5, or equivalent</li> <li>• Math 12 (67%), or equivalent</li> <li>• Completion of Administrative Assistant Certificate, or equivalent</li> </ul>	<ul style="list-style-type: none"> <li>• Administrative Assistant</li> <li>• Sales Coordinator</li> <li>• Office Clerk</li> </ul>	<ul style="list-style-type: none"> <li>• Economics</li> <li>• Financial Accounting</li> <li>• Organizational Behaviour</li> </ul>
<p><b>Management Diploma</b></p> <p>Develop your skills in areas such as accounting, oral and written communications, problem-solving, marketing, human relations, economics, information systems and business ethics. Your diploma credits count towards completion of the Bachelor of Business Administration.</p> <p><i>Exit Certificate after first year: Business Foundations Certificate</i></p> <p><a href="http://tru.ca/mgmt">tru.ca/mgmt</a></p>	<ul style="list-style-type: none"> <li>• All English 12 (73%), or IELTS 6.5, or equivalent</li> <li>• Math 12 (67%), or equivalent</li> </ul> <p><b>Upgrading available while in the program</b></p>	<ul style="list-style-type: none"> <li>• Customer Relations Coordinator</li> <li>• Insurance Clerk</li> <li>• Cost Administrator</li> <li>• Employment Counsellor</li> </ul>	<ul style="list-style-type: none"> <li>• Organizational Behaviour</li> <li>• Employee and Labour Relations</li> <li>• International Business</li> </ul>

**Diplomas:** Upgrading available while in the program.



# OUR STORIES

What's better than real life experiences? See what our students and alumni have to say about all that TRU offers.

## Bachelor of Science in Nursing

TRU's School of Nursing instructors have supported me throughout the program, which has been a difficult journey at times. The faculty are always looking for opportunities for students to practice skills and apply their knowledge in clinical settings, helping us to better retain course material.



**ADETOUN ODUBOTE**  
NIGERIA



**YASSIIR CHADY**  
MAURITIUS



## Computing Science Diploma

The Career Education Department was of great help to me. They helped me with everything career-related, from improving my resumé to developing my skills, specially my communication and networking skills. They work really hard to help students succeed professionally.

While still completing my co-op requirements, I received a call for my first interview in the program, with Trimble. I was nervous and wasn't very confident with my communication skills. But my co-op supervisor gave me the support I needed to succeed.

Read more of Yassiir's experience at TRU on his blog post: [ourtru.ca/yassiir](https://ourtru.ca/yassiir)

## Bachelor of Business Administration, Major in Marketing

I've always been interested in studying abroad and had a passion for marketing and creating digital content. TRU has given me all the tools to build my own path in life, and working on the international social media team gave me opportunities to put my education into practice.



**ANDREA JÁCOME**  
MEXICO

**BENNO BEHRNDT**  
GERMANY



## Master of Business Administration

TRU's Master of Business Administration program not only provides expertise in your field of study, but faculty members also prepare you to enter the professional world by helping to perfect your application documents. TRU's MBA program exceeded all my expectations.

**VERA WU**  
CHINA



## Master of Education

TRU's Master of Education program has a flexible structure that allows you to focus on your interests in the field. While you'll learn how to do a teaching job in your Bachelor of Education, the Master of Education teaches you how to reflect and improve to sustain learning and growth.





**ANYA BOHACH**  
UKRAINE



“

**Post-Baccalaureate Diploma**

Choosing TRU for my post-baccalaureate diploma has been a great experience. It's very welcoming and I've felt at-home here since the first day. I've met people from all over the world, enjoyed breathtaking views every day, and am inspired to succeed both academically and personally.



**TARIKA SHASTRY**  
INDIA



**Post-Baccalaureate Diploma in Human Resource Management**

TRU has supported me throughout my program, from my application right through graduation. If you have a problem, no matter how general or specific, TRU has someone on campus to help resolve it. I've grown and flourished as a student, peer and individually thanks to the support of TRU.

“  
**Bachelor of Science, Animal Biology**  
Moving away from home to a new city can be scary, but I was welcomed at TRU with warm smiles and open arms. I've had the opportunity to explore topics beyond my major and participate in numerous activities. I'm encouraged to embrace my diversity while learning from other cultural perspectives.



**ANDREA VALCÁRCEL ABUD**  
DOMINICAN REPUBLIC



**MARIO REYES CASTRO**  
MEXICO



“

**Master of Business Administration**

I'd like to launch my own start-up in the near future and I'm confident TRU's MBA program will help me reach this goal. The MBA faculty are highly skilled, and the program has supplied me with the academic background, experience and leadership skills to succeed in our ever-changing world.



**ARIA MARTA KORNAS**  
POLAND



**Bachelor of Business Administration, Economics**

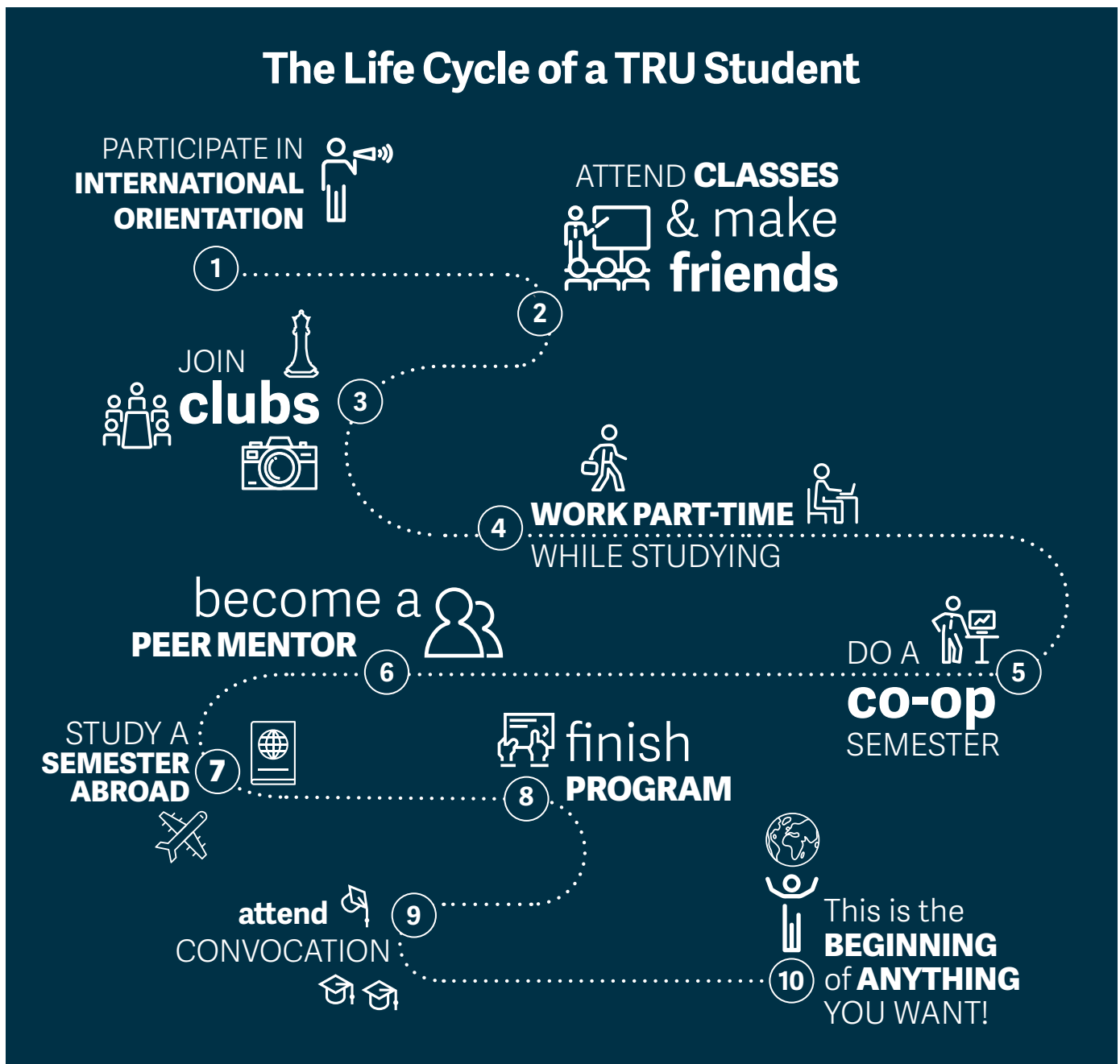
I came to TRU for a degree but got so much more. I made amazing friends in a picturesque city, worked on a United Nations agency project, got involved with student governance and was a student club leader. TRU offers unparalleled resources and services for its students to thrive.



# EDUCATION, SOCIAL WORK, & HUMAN SERVICES

PROGRAM NAME	MINIMUM REQUIREMENTS	SAMPLE JOBS	SAMPLE COURSES
<p><b>Master of Education</b></p> <p>The Master of Education program is designed for the working professional involved in education and for students who wish to assume positions as educational leaders and researchers, or who work in education, health care, private industry and government.</p> <p>Consisting of five core courses plus five courses from one focus subject such as educational leadership, curriculum, counselling, or inclusive and special education. The MEd is completed through a capstone course, though it is possible to complete the program by final project or thesis if a supervisor is available.</p> <p><a href="http://tru.ca/med">tru.ca/med</a></p>	<ul style="list-style-type: none"> <li>4-year undergraduate degree or equivalent with a min GPA 3.0 (on scale of 4.33) in last 60 credits</li> <li>IELTS score of 6.5 no bands below 6.5 or completion of undergrad degree at an English language university in a country where English is their first official language</li> </ul> <p><b>Limited seats</b></p>	<ul style="list-style-type: none"> <li>Instructional Technologist</li> <li>Educational Superintendent</li> <li>Counsellor</li> <li>Academic Dean</li> </ul>	<ul style="list-style-type: none"> <li>Legal Issues in Education</li> <li>Multimedia in the Curriculum</li> <li>Theories in Counselling</li> <li>Intervention and Programming in Inclusive Education</li> </ul>
<p><b>Graduate Certificate in Educational Studies</b></p> <p>The Graduate Certificate in Educational Studies (GCES) is designed to help develop the English language and academic skills to successfully meet the MEd entry requirements.</p> <p><a href="http://tru.ca/edsw/education/gces">tru.ca/edsw/education/gces</a></p>	<ul style="list-style-type: none"> <li>4-year undergraduate degree or equivalent with a min GPA 2.5 (on scale of 4.33) in last 60 credits</li> <li>IELTS score of 6.5 no bands below 6.5 or completion of undergrad degree at an English language university in a country where English is their first official language</li> </ul>	<ul style="list-style-type: none"> <li>Instructional Technologist</li> <li>Educational Superintendent</li> <li>Counsellor</li> <li>Academic Dean</li> </ul>	<ul style="list-style-type: none"> <li>Legal Issues in Education</li> <li>Multimedia in the Curriculum</li> <li>Theories in Counselling</li> <li>Intervention and Programming in Inclusive Education</li> </ul>
<p><b>Bachelor of Education – Elementary</b></p> <p>This two-year program prepares students to teach in elementary schools. Graduates obtain their professional teaching certificate from the Ministry of Education, Teacher Regulation Branch (TRB), which qualifies the graduate to teach kindergarten to grade 12 in BC public schools. Graduates can also teach in any province or territory in Canada, and in many other countries.</p> <p><a href="http://tru.ca/edb">tru.ca/edb</a></p>	<ul style="list-style-type: none"> <li>Must be graduate of a four year degree or equivalent (min GPA 2.67 in last 60 credits) normally in arts, fine arts, math, science, music or physical education</li> <li>100 hours volunteer experience</li> </ul> <p><b>Competitive admission</b></p>	<ul style="list-style-type: none"> <li>Primary School Teacher</li> <li>Youth Worker</li> <li>Community Education Officer</li> <li>Education Administrator</li> <li>Teaching Assistant</li> </ul>	<ul style="list-style-type: none"> <li>History of Education</li> <li>Language and Literacy</li> <li>Mathematics</li> <li>Special Education</li> <li>Visual Arts</li> <li>School Organization</li> </ul>
<p><b>Bachelor of Education – Secondary (STEM)</b></p> <p>This two-year program prepares students to teach science and mathematics in the context of engineering and technology in secondary school settings. Graduates qualify for a professional teaching certificate from the BC Ministry of Education, Teacher Regulation Branch (TRB), certifying them to teach science and mathematics subjects in any secondary school setting. Graduates often teach in other provinces or territories in Canada and in other countries.</p> <p><a href="http://tru.ca/stem">tru.ca/stem</a></p>	<ul style="list-style-type: none"> <li>Must be graduate of a four year (120 credit hours) bachelor of science degree or equivalent in mathematics or science (such as Physics, Biology, Chemistry, or General Science) with a 2.67 GPA on the most recent 60 credits completed</li> <li>One teachable major or two teachable minors (courses taught in secondary schools)</li> <li>Successful completion of six credits of English Literature and Composition at any level</li> <li>100 hours of relevant volunteer or paid teaching experience</li> </ul> <p><b>Competitive admission</b></p>	<ul style="list-style-type: none"> <li>High School Science Teacher</li> <li>Education Administrator</li> </ul>	<ul style="list-style-type: none"> <li>History of Education</li> <li>Philosophy of Education</li> <li>Diversity and Inclusive Education</li> <li>Legal Issues</li> <li>Management of Technical Facilities</li> </ul>

<p><b>Bachelor of Social Work</b></p> <p>Learn the skills you need for a rewarding career as a generalist social work practitioner in various fields of practice, such as child welfare, mental health, addictions, women's services, family justice, corrections, health and Indigenous people. The BSW program has an orientation toward social justice, respect for diversity and social change.</p> <p><a href="http://tru.ca/bsw">tru.ca/bsw</a></p>	<ul style="list-style-type: none"> <li>• A minimum of 54 credits (60 recommended) with a min GPA of 2.33</li> <li>• Human Service diploma or certificate with a minimum GPA of 2.67</li> </ul> <p><b>Limited seats</b></p>	<ul style="list-style-type: none"> <li>• School Social Worker</li> <li>• Child Welfare Social Worker</li> <li>• Mental Health Social Worker</li> <li>• Substance Abuse Social Worker</li> </ul>	<ul style="list-style-type: none"> <li>• Theory and Ideology of Social Work</li> <li>• Sexual Diversity and Gender Expression</li> <li>• Introduction to Disability Studies</li> <li>• Family Violence and Social Work Practices</li> </ul>
<p><b>Early Childhood Education Diploma</b></p> <p>This program provides excellent learning techniques to acquire necessary knowledge and skills to become educators. Completion of ECE Diploma satisfies the requirements of CCFB and BC Government for a license to practice as an Early Childhood Educator.</p> <p><a href="http://tru.ca/ece">tru.ca/ece</a></p>	<ul style="list-style-type: none"> <li>• All English 12 (73%), or IELTS 6.5, or equivalent</li> <li>• 25 hours of volunteer and/or work experience in a licensed child care facility</li> </ul> <p><b>Limited seats</b></p>	<ul style="list-style-type: none"> <li>• Early Childhood Educator</li> <li>• Special Needs Educator</li> <li>• Early Literacy Specialist</li> </ul>	<ul style="list-style-type: none"> <li>• Child Guidance</li> <li>• Introduction to Developmental Psychology: Childhood &amp; Adolescence</li> <li>• Curriculum Development</li> </ul>





# HEALTH SCIENCES & NURSING

PROGRAM NAME	MINIMUM REQUIREMENTS	SAMPLE JOBS	SAMPLE COURSES
<p><b>Master of Nursing</b></p> <p>The MN program offers nursing graduates the knowledge, skills and abilities they need for principled and thoughtful leadership through critical and creative approaches that influence innovative change. Graduates will be equipped to meet the demand for advanced nursing roles within complex and dynamic health care systems internationally.</p> <p><a href="http://tru.ca/mn">tru.ca/mn</a></p>	<ul style="list-style-type: none"> <li>Any bachelor's degree, bachelor of nursing recommended</li> <li>Min GPA 3.0 on scale of 4.0 in last 60 credits</li> <li>Introductory Statistics 12 (or equivalent) C+</li> <li>Two letters of reference (one academic and one professional)</li> <li>Verification of registration as an active practicing nurse from the regulatory body of the jurisdiction where you live</li> <li>A minimum IELTS score of 7.0: Speaking 7.0, Writing 7.0, Listening 7.5, Reading 6.5</li> </ul> <p><b>Competitive admission</b></p>	<ul style="list-style-type: none"> <li>Research Nurse</li> <li>Nurse Educator</li> <li>Health Care Administrator</li> </ul>	<ul style="list-style-type: none"> <li>Knowledge for Advanced Nursing</li> <li>Research in Healthcare</li> <li>Leadership and Managing Change in Healthcare</li> </ul>
<p><b>Bachelor of Health Science (Respiratory Therapy dual credential)</b></p> <p>Expand your career options as a respiratory therapist. Graduate with both a three-year Respiratory Therapy diploma and a BHS degree within a four-year period in the dual diploma/degree stream. The first year is the same for both the RT diploma and dual credential.</p> <p><a href="http://tru.ca/rt">tru.ca/rt</a></p>	<ul style="list-style-type: none"> <li>All English 12 (73%), or IELTS 6.5, or equivalent</li> <li>Foundations of Math 12 or Pre-Calculus 12 (67%), or equivalent</li> <li>Biology 12 (67%), or equivalent</li> <li>Chemistry 12 (67%), or equivalent</li> <li>Physics 11 (67%), or equivalent</li> </ul> <p><b>Competitive admission</b> <b>Application Deadline</b> March 1</p>	<ul style="list-style-type: none"> <li>Respiratory Therapist</li> <li>Public Health Specialist</li> <li>Anesthesiologist</li> <li>Health Sciences Researcher</li> </ul>	<ul style="list-style-type: none"> <li>Blood Gas Analysis</li> <li>Pulmonary Function</li> <li>Perinatal and Pediatric Respiratory Care</li> <li>Instrumentation</li> </ul>
<p><b>Bachelor of Science in Nursing</b></p> <p>This four-year degree program (plus practicum placements) educates students to be competent nurses to work with individuals, families, groups or communities from a health promotion perspective and an ethic of caring. Practice experience occurs in acute care, extended care and intermediate care hospitals, and other community health agencies and homes with options for local, regional, provincial, national and international practicums. Upon completion, graduates are eligible to write the National Council Licensure Examination (NCLEX) and apply for registration with the College of Registered Nurses of BC (CRNBC) to practice as a Registered Nurse (RN).</p> <p><a href="http://tru.ca/nursing/programs/bsn">tru.ca/nursing/programs/bsn</a></p>	<ul style="list-style-type: none"> <li>All English 12 (73%), or IELTS 6.5, or equivalent</li> <li>Foundations of Math 12 or Pre-Calculus 12 (67%), or equivalent</li> <li>Biology 12 (67%), or equivalent</li> <li>Chemistry 11 (67%), or equivalent</li> <li>One additional Science 11 or Science 12 with a minimum (67%), or equivalent</li> </ul> <p><b>Competitive admission</b> <b>Application Deadline</b> January 15</p>	<ul style="list-style-type: none"> <li>Medical Intensive Care Nurse</li> <li>Advanced Nurse Practitioner</li> <li>Acute Care Nurse Practitioner</li> <li>Nurse Educator</li> <li>Registered Nurse</li> </ul>	<ul style="list-style-type: none"> <li>Health and Healing</li> <li>Composition</li> <li>Health Care Ethics</li> <li>Consolidated Practice Experience</li> <li>Nursing Research</li> </ul>
<p><b>Respiratory Therapy Diploma</b></p> <p>This three-year diploma trains you as a therapist specializing in cardiopulmonary disease prevention and education. Learn to assess and treat disorders of the lungs, heart, and vascular system. Includes a one-year clinical at various hospitals.</p> <p><a href="http://tru.ca/rt">tru.ca/rt</a></p>	<ul style="list-style-type: none"> <li>All English 12 (73%), or IELTS 6.5, or equivalent</li> <li>Foundations of Math 12 or Pre-Calculus 12 (67%), or equivalent</li> <li>Biology 12 (67%), or equivalent</li> <li>Chemistry 12 (67%), or equivalent</li> <li>Physics 11 (67%), or equivalent</li> </ul> <p><b>Competitive admission</b></p>	<ul style="list-style-type: none"> <li>Respiratory Therapist</li> <li>Radiological Technologist</li> <li>Health Sciences Educator</li> <li>Clinical Education/ Application Specialist</li> </ul>	<ul style="list-style-type: none"> <li>Mechanical Ventilation</li> <li>Patient Assessment</li> <li>Anesthesia</li> <li>Assessment and Interventions in Multisystem Disorders</li> <li>General Pathophysiology</li> </ul>

# LAW & JUSTICE

PROGRAM NAME	MINIMUM REQUIREMENTS	SAMPLE JOBS	SAMPLE COURSES
<p><b>Law – Juris Doctor</b></p> <p>Obtain a dynamic legal education with a three-year, full-time Juris Doctor degree program. Understand law, master the realities of practice and be prepared to serve the profession of law and the interests of justice. Opportunities include competitive mooting, an international law journal, a legal information service and student-run initiatives.</p> <p><a href="http://tru.ca/law">tru.ca/law</a></p>	<ul style="list-style-type: none"> <li>• A bachelor degree</li> <li>• LSAT score</li> <li>• Personal statement</li> <li>• 3 references</li> <li>• IELTS 7.0, no bands below 7.0</li> </ul> <p><b>Competitive admission</b></p>	<ul style="list-style-type: none"> <li>• Research Lawyer</li> <li>• Public Defenders</li> <li>• Judge</li> <li>• Contract Negotiators</li> <li>• Plaintiff Attorneys</li> <li>• Corporate Lawyer</li> </ul>	<ul style="list-style-type: none"> <li>• Advanced Legal Research</li> <li>• Ethical Lawyering</li> <li>• Alternate Dispute Resolution</li> <li>• Evidence</li> <li>• Civil Procedure</li> </ul>
<p><b>Police &amp; Justice Studies Diploma</b></p> <p>This 2-year program will prepare you for the challenges of a career in policing, as well as in corrections, parole, customs, and other government services at the federal, provincial or municipal levels. Your diploma credits count towards completion of an arts, business or criminology degree.</p> <p><a href="http://tru.ca/pjs">tru.ca/pjs</a></p>	<ul style="list-style-type: none"> <li>• All English 12 (73%), or IELTS 6.5, or equivalent</li> <li>• Any Math 11</li> <li>• Statement of Career Objectives</li> <li>• Resumé</li> </ul> <p><b>Limited seats</b></p>	<ul style="list-style-type: none"> <li>• Police Officer</li> <li>• Bylaw Enforcement Officer</li> <li>• Commercial Vehicle Enforcement Officer</li> <li>• Criminologist</li> <li>• Federal Air Marshal</li> </ul>	<ul style="list-style-type: none"> <li>• Human Behaviour</li> <li>• Conditioning</li> <li>• Tactical Communication Skills for Criminal Justice</li> <li>• Introduction to Criminal Justice Services in Canada</li> <li>• Police Skills</li> </ul>

# VOCATIONAL PROGRAMS

PROGRAM NAME	WEEKS
<p><b>Instrument &amp; Control Technician</b></p> <p><a href="http://tru.ca/trades/trades-programs/instrumentation-and-control-technician">tru.ca/trades/trades-programs/instrumentation-and-control-technician</a></p>	21
<p><b>Metal Fabricator Foundation</b></p> <p><a href="http://tru.ca/trades/trades-programs">tru.ca/trades/trades-programs</a></p>	23
<p><b>Carpentry Foundation (Williams Lake campus only)</b></p> <p><a href="http://tru.ca/williamslake/programs/trades/carpenter">tru.ca/williamslake/programs/trades/carpenter</a></p>	24
<p><b>Electrical Foundation</b></p> <p><a href="http://tru.ca/williamslake/programs/trades/electrical_foundation">tru.ca/williamslake/programs/trades/electrical_foundation</a>   <a href="http://tru.ca/trades/trades-programs/electrician-construction">tru.ca/trades/trades-programs/electrician-construction</a></p>	24
<p><b>Industrial Mechanic (Millwright) Machinist Foundation</b></p> <p><a href="http://tru.ca/trades/trades-programs/industrial-mechanic-millwright">tru.ca/trades/trades-programs/industrial-mechanic-millwright</a></p>	24
<p><b>Plumbing Foundation</b></p> <p><a href="http://tru.ca/trades/trades-programs/plumber">tru.ca/trades/trades-programs/plumber</a></p>	25
<p><b>Welder Foundation</b></p> <p><a href="http://tru.ca/trades/trades-programs/welder">tru.ca/trades/trades-programs/welder</a></p>	28
<p><b>Carpentry Foundation</b></p> <p><a href="http://tru.ca/trades/trades-programs/carpenter">tru.ca/trades/trades-programs/carpenter</a></p>	29
<p><b>Automotive Service Technician Foundation</b></p> <p><a href="http://tru.ca/trades/trades-programs/automotive-service-technician">tru.ca/trades/trades-programs/automotive-service-technician</a></p>	30
<p><b>Carpentry/Residential Construction Foundation</b></p> <p><a href="http://tru.ca/trades/trades-programs">tru.ca/trades/trades-programs</a></p>	30
<p><b>Electrical/Industrial Mechanic Foundation</b></p> <p><a href="http://tru.ca/trades/trades-programs/electrician-industrial">tru.ca/trades/trades-programs/electrician-industrial</a></p>	30
<p><b>Heavy Duty Equipment Technician Foundation</b></p> <p><a href="http://tru.ca/trades/trades-programs/heavy-duty-equipment-technician">tru.ca/trades/trades-programs/heavy-duty-equipment-technician</a></p>	36



# SCIENCE & COMPUTING SCIENCE

PROGRAM NAME	MINIMUM REQUIREMENTS	SAMPLE JOBS	SAMPLE COURSES
<p><b>Master of Science in Environmental Science</b></p> <p>Designed to produce graduates who are innovative and have multi-disciplinary skills and broad knowledge in the field of environmental science. It is structured to be unique, flexible and relevant.</p> <p><a href="http://tru.ca/science/programs/msces">tru.ca/science/programs/msces</a></p>	<ul style="list-style-type: none"> <li>• Must have a TRU thesis supervisor</li> <li>• 3.3 GPA of a scale of 4.33 in the last 60 credits</li> <li>• IELTS of 6.5 with no bands below 6.0</li> </ul>	<ul style="list-style-type: none"> <li>• Environmental Policy Director</li> <li>• Project Manager</li> <li>• Environmental Coordinator</li> </ul>	<ul style="list-style-type: none"> <li>• Environmental Science: History, Philosophy, and Concepts</li> <li>• Environmental Science: Conducting Science</li> <li>• Thesis: Master's Thesis</li> </ul>
<p><b>Bachelor of Computing Science</b></p> <p>Explore a career in the technology industry—software and hardware design, system architecture, operating system structure and modeling and simulation. The BCS degree consists of two years of general study followed by two years of concentrated computing studies. Double degree option with Business Administration is available.</p> <p><a href="http://tru.ca/compsci">tru.ca/compsci</a></p>	<ul style="list-style-type: none"> <li>• All English 12 (73%), or IELTS 6.5, or equivalent</li> <li>• Pre-Calculus 12 or Math 12 (67%), or equivalent</li> </ul> <p><b>Upgrading available while in the program</b></p>	<ul style="list-style-type: none"> <li>• Web, Design, and Integration Developer</li> <li>• Project Manager</li> <li>• Mobile Application Developer</li> <li>• Computer Programmer</li> </ul>	<ul style="list-style-type: none"> <li>• Discrete Structures</li> <li>• Computer Network Security</li> <li>• Software Engineering</li> <li>• Advanced Web Design and Programming</li> <li>• Artificial Intelligence</li> </ul>
<p><b>Bachelor of Science</b></p> <p>Enjoy both depth and breadth in your science education. The rigorous BSc program offers opportunities for practical experience, co-op, undergraduate research and mentorship by internationally recognized faculty researchers across a spectrum of disciplines.</p> <p><b>Majors:</b> Animal Biology, Biology, Cellular, Chemical Biology, Chemistry, Computing Science, Computing Science &amp; Mathematics, Ecology &amp; Environmental Biology, Environmental Chemistry, General Science, Mathematics, Mathematics &amp; Economics, Mathematical Sciences, Molecular &amp; Microbial Biology, Physics, Pre-professional Health Science</p> <p><b>Minors:</b> Environmental Economics &amp; Sustainability, Management</p> <p><a href="http://tru.ca/bsc">tru.ca/bsc</a></p>	<ul style="list-style-type: none"> <li>• All English 12 (73%), or IELTS 6.5, or equivalent</li> <li>• Pre-Calculus 12 (67%), or equivalent</li> <li>• Biology 11 or 12 (67%), or equivalent. Not required for majors in computing, math, or physics.</li> <li>• Chemistry 11 or 12, or equivalent</li> <li>• Physics 11 or 12, or equivalent</li> </ul> <p><b>Upgrading available while in the program</b></p>	<ul style="list-style-type: none"> <li>• Lab Technologist</li> <li>• Computing Analyst</li> <li>• Project Manager</li> <li>• Scientific Writer</li> <li>• Technical Manager</li> </ul>	<ul style="list-style-type: none"> <li>• Cell Biology</li> <li>• Inorganic Chemistry</li> <li>• Numerical Analysis</li> <li>• Relativity and Quanta</li> <li>• Sustainable Economic Development</li> </ul>
<p><b>Bachelor of Engineering in Software Engineering</b></p> <p>If you want to be a professional with the technical knowledge and skills to design, develop, test and maintain problem-solving software by applying systematic engineering principles, a software engineering degree from Thompson Rivers University is the right choice. It's not just a degree. It's a commitment and career-focused passion that leads to high-quality software development to serve the needs of humanity and to make life better for many. Join the fastest growing and in-demand profession to be part of teams producing software-enabled products of high technical complexity.</p> <p><a href="http://tru.ca/se">tru.ca/se</a></p>	<ul style="list-style-type: none"> <li>• BC Grade 12 or equivalent</li> <li>• BC English 12/English 12 First Peoples with a minimum of 67% or equivalent</li> <li>• Pre-Calculus 12 with a minimum of 67% or equivalent</li> <li>• Chemistry 12 with a minimum of 67% or equivalent</li> <li>• Physics 12 with a minimum of 67% or equivalent</li> </ul> <p><b>Limited seats</b></p>	<ul style="list-style-type: none"> <li>• Software Application Development</li> <li>• Software Testing</li> <li>• Software Design</li> <li>• Database Management</li> <li>• Network Management and Operations</li> <li>• Security Analysis and Protection</li> </ul>	<ul style="list-style-type: none"> <li>• Software Engineering Design: Process &amp; Principles</li> <li>• Software Design Pattern</li> <li>• Software Quality Engineering</li> </ul>
<p><b>Bachelor of Natural Resource Science</b></p> <p>Gain a broad and in-depth understanding of natural resources, including not only biology, ecology and scientific method, but sector-specific resource management for forestry, fisheries, range and recreation. The BNRS program provides hands-on learning in the field and opportunities for undergraduate research and study abroad.</p> <p><b>Minor:</b> Environmental Economics &amp; Sustainable Development</p> <p><a href="http://tru.ca/bnrs">tru.ca/bnrs</a></p>	<ul style="list-style-type: none"> <li>• All English 12 (73%), or IELTS 6.5, or equivalent</li> <li>• Pre-Calculus 12 (67%), or equivalent</li> <li>• Biology 11 (67%), or equivalent</li> <li>• Chemistry 11, or equivalent</li> </ul> <p><b>Competitive admission</b></p>	<ul style="list-style-type: none"> <li>• Fisheries Researcher</li> <li>• Forestry Interpreter and Guide</li> <li>• Wildlife Biology Researcher</li> <li>• Range Manager</li> <li>• Ecology and Land Manager</li> </ul>	<ul style="list-style-type: none"> <li>• Biometrics</li> <li>• Natural Resource Pathology</li> <li>• Forest Economics</li> <li>• Chemical Bonding and Organic Chemistry</li> </ul>

<h3>Computing Science Diploma</h3> <p>Become proficient in the application of computers to solving business-related problems. Develop your technical and computer skills in combination with communication and business skills. Your diploma credits count towards completion of the Bachelor of Computing Science degree.</p> <p><a href="http://tru.ca/compsci">tru.ca/compsci</a></p>	<ul style="list-style-type: none"> <li>All English 12 (73%), or IELTS 6.5, or equivalent</li> <li>Pre-Calculus 12 or Math 12 (67%), or equivalent</li> </ul> <p><b>Upgrading available while in the program</b></p>	<ul style="list-style-type: none"> <li>Multimedia Developer</li> <li>Game Developer</li> <li>Human Computer Interface Designer</li> <li>Network and Telecommunication System Administrator</li> </ul>	<ul style="list-style-type: none"> <li>Mathematics for Computing Science</li> <li>Website Design and Development</li> <li>Database Systems</li> <li>Computer Programming</li> </ul>
<h3>Architectural &amp; Engineering Technology Diploma (ARET)</h3> <p>This nationally accredited program is a three-year diploma that emphasizes the design processes in building, civil and mechanical technologies, building structures, municipal services, electrical, plumbing and HVAC systems. On completion, students can ladder into the Bachelor of Technology Management (BTM) degree and finish the degree after just three more semesters.</p> <p><a href="http://tru.ca/aret">tru.ca/aret</a></p>	<ul style="list-style-type: none"> <li>All English 12 (73%), or IELTS 6.5, or equivalent</li> <li>Math 12 (67%), or equivalent</li> <li>Physics 11, or equivalent</li> </ul> <p><b>Limited seats</b> <b>Application Deadline</b> March 1</p>	<ul style="list-style-type: none"> <li>Building Technologist</li> <li>Civil Technologist</li> <li>Architectural Designer</li> <li>Mechanical Technologist</li> </ul>	<ul style="list-style-type: none"> <li>Computer Aided Design and Drafting</li> <li>Building Electrical Design</li> <li>Site Planning and Development</li> <li>Fluid Mechanics</li> </ul>
<h3>Engineering Transfer (Year 1)</h3> <p>Get started on your engineering degree at TRU by taking one year of general study courses that are common to all engineering disciplines. This program transfers into the second year of a full engineering program at either the University of British Columbia or the University of Victoria, or stay at TRU to complete Year 2, Electrical or Computer for entry into third year at UVic.</p> <p><a href="http://tru.ca/et">tru.ca/et</a></p>	<ul style="list-style-type: none"> <li>All English 12 (73%), or IELTS 6.5, or equivalent</li> <li>Pre-Calculus 12 (73%), or equivalent</li> <li>Chemistry 12 (73%), or equivalent</li> <li>Physics 12 (73%), or equivalent</li> </ul> <p><b>Competitive admission</b> <b>Application Deadline</b> February 1</p>	<ul style="list-style-type: none"> <li>Chemical Engineer</li> <li>Civil Engineer</li> <li>Mechanical Engineer</li> <li>Electrical Engineer</li> <li>Computer Engineer</li> </ul>	<ul style="list-style-type: none"> <li>Principles of Software Development</li> <li>Engineering Graphics</li> <li>Linear Algebra for Engineers</li> <li>Principles of Chemistry</li> <li>Physics for Engineers</li> </ul>
<h3>Engineering Transfer (Year 2, Electrical or Computer)</h3> <p>Complete second-year engineering courses in either electrical or computer engineering, plus a four- to eight-month co-op term. Study circuit analysis and digital electronics, design and test microcontroller circuits and learn to control various mechanical systems. Transfers to the third-year electrical or computing stream at the University of Victoria.</p> <p><a href="http://tru.ca/et">tru.ca/et</a></p>	<ul style="list-style-type: none"> <li>Completion of first year of the Engineering Transfer Program at TRU (38 credits) with a cumulative grade point average of 2.50</li> <li>A minimum grade of C- or better in all courses that are part of the first-year transfer program.</li> </ul> <p><b>Competitive admission</b></p>	<ul style="list-style-type: none"> <li>Electrical Engineer</li> <li>Computer Engineer</li> <li>Aerospace Engineer</li> <li>Biomedical Engineer</li> <li>Software Engineer</li> </ul>	<ul style="list-style-type: none"> <li>Circuit Analysis</li> <li>Differential Equations</li> <li>Calculus</li> <li>Digital Electronics</li> <li>Electrical Properties of Materials</li> <li>Computer Programming</li> </ul>
<h3>Forestry Transfer Program</h3> <p>Complete the first two years of UBC's four-year forestry degree program at TRU. A general year of forestry is followed in second year by forest resource management, forest operations, forest science and natural resource conservation. With a GPA of at least 2.50 in the required courses, you are eligible to apply for admission to the UBC Faculty of Forestry.</p> <p><a href="http://tru.ca/forestry">tru.ca/forestry</a></p>	<ul style="list-style-type: none"> <li>All English 12 (73%), or IELTS 6.5, or equivalent</li> <li>Pre-Calculus 12 (67%), or equivalent</li> <li>Two of Biology 11, Chemistry 11, or Physics 11, or equivalent, all 3 strongly recommended</li> <li>One of Biology 12, Chemistry 12, or Physics 12, or equivalent</li> </ul> <p><b>Competitive admission</b> <b>Application Deadline</b> April 25</p>	<ul style="list-style-type: none"> <li>Forest Development Manager</li> <li>Planning Forester</li> <li>Fisheries and Wildlife Officer</li> <li>Landscape Planning and Green Space Designer</li> <li>Urban Ecological Assessment Specialist</li> </ul>	<ul style="list-style-type: none"> <li>Forestry Mensuration</li> <li>Forest and Environmental Climatology</li> <li>Physical Geography</li> <li>Regional Geography of Canada</li> </ul>
<h3>Applied Agriculture &amp; Enterprise Management</h3> <p>Students will gain the expertise to build sustainable ranching enterprises in BC and apply that expertise to any agriculture enterprise in any region. Learn about carbon-neutral ranching and land management practices with a focus on innovation, reducing stress on livestock and financial and environmental sustainability. During this program, students live with a host ranch family and gain hands on skills and work experience concurrently with their academic studies. Come and experience Canadian ranching in the Cariboo region of Canada.</p> <p><a href="http://tru.ca/ranching">tru.ca/ranching</a></p>	<ul style="list-style-type: none"> <li>All English 12, or IELTS 6.5, or equivalent</li> <li>A good working knowledge of Microsoft Word and Excel</li> <li>Two letters of reference</li> </ul>	<ul style="list-style-type: none"> <li>Farm or Ranch Manager</li> <li>Range and Land Use Manager</li> <li>Commercial Account Manager</li> <li>Economic Development Officer</li> <li>Community Development Consultant</li> <li>Agriculture Producer or Entrepreneur</li> </ul>	<ul style="list-style-type: none"> <li>Business Strategy</li> <li>Agriculture Marketing</li> <li>Riparian Management</li> <li>Range Ecology</li> <li>Stockmanship</li> <li>Enterprise Diversification</li> <li>Beef Production</li> <li>Sheep Production</li> <li>Agri-tourism</li> </ul>



# TRADES & TECHNOLOGY

PROGRAM NAME	MINIMUM REQUIREMENTS	SAMPLE JOBS	SAMPLE COURSES
<p><b>Bachelor of Technology</b></p> <p>Complement your strong technical expertise with the knowledge and skills required to become an effective workplace manager. Learn to communicate and lead effectively, manage large-scale projects and emerging technologies, operate sustainably, function in a global economy and perform research. Some courses count as prerequisites of the Master of Business Administration.</p> <p><a href="http://tru.ca/bt">tru.ca/bt</a></p>	<ul style="list-style-type: none"> <li>All English 12, or IELTS 6.5, or equivalent</li> <li>Completion of a two-year diploma in technology, a recognized trades qualification or equivalent</li> </ul> <p><b>Limited seats</b> <b>Application Deadline</b> March 1</p>	<ul style="list-style-type: none"> <li>Construction Manager</li> <li>Product Development Manager</li> <li>Technologist</li> <li>Quality Assurance Manager</li> </ul>	<ul style="list-style-type: none"> <li>Project Management</li> <li>Introduction to Research Methods</li> <li>Decision Analysis</li> <li>Econometrics</li> <li>Industrial Organization</li> </ul>
<p><b>Horticulture</b></p> <p>This program contributes to the knowledge and experience required to create and preserve sustainable urban environments while pursuing careers in landscape design, installation and maintenance, either as an independent entrepreneur or within a horticulture business or municipal parks department.</p> <p><a href="http://tru.ca/horticulture">tru.ca/horticulture</a></p>	<ul style="list-style-type: none"> <li>All English 12 (73%), or IELTS 6.5, or equivalent</li> <li>Math 11 (60%), or equivalent</li> </ul> <p><b>Limited seats</b> <b>Application Deadline</b> March 1</p>	<ul style="list-style-type: none"> <li>Landscaping and maintenance</li> <li>Retail and wholesale</li> <li>Nurseries</li> <li>Garden centers</li> <li>Municipal parks</li> <li>Supply companies</li> <li>Commercial greenhouses</li> <li>Orchards</li> <li>Golf courses</li> <li>Self employment</li> </ul>	<ul style="list-style-type: none"> <li>Greenhouse Production</li> <li>Soil Science</li> <li>Landscaping</li> <li>Nursery Production and Retailing</li> <li>Turfgrass Management</li> </ul>
<p><b>Instrumentation Engineering Technology Diploma</b></p> <p>Designed for students considering careers in either Engineering or Electrical Instrumentation, this program provides a first-year common to all engineering disciplines while developing practical knowledge gained in the Foundation and Level-two Electrical Instrumentation apprenticeship. Students receive a background in science and mathematics, and are introduced to engineering design principles, drafting techniques, project management and structural analysis.</p> <p><a href="http://tru.ca/iet">tru.ca/iet</a></p>	<ul style="list-style-type: none"> <li>Pre-Calculus 12 with B (73%) or better</li> <li>Physics 12 with B (73%) or better</li> <li>Chemistry 11 (12 is highly recommended) with B (73%) or better</li> <li>English 12/English 12 First Peoples with 73% or better (or equivalent)</li> </ul> <p><b>Limited seats</b></p>	<p>Diploma graduates can pursue ITA Red Seal designation, having completed two of the four levels of training. Upon completion of UVic engineering degrees, they can practice as engineers in training (EITs) and work towards professional engineering certification (P.Eng.).</p>	<ul style="list-style-type: none"> <li>Instrumentation Engineering Technology</li> <li>Engineering Mechanics</li> <li>Engineering Graphics</li> <li>Introduction to Engineering Measurements</li> <li>Chemical Bonding and Organic Chemistry</li> </ul>
<p><b>Water and Wastewater Technology Diploma</b></p> <p>Develop marketable expertise in the operation and maintenance of water and wastewater treatment, distribution, re-use and disposal facilities and in monitoring source water quality. This state-of-the-art program encompasses chemistry, microbiology, math, mechanical and electrical systems, instrumentation and treatment technologies as they are applied in the increasingly vital water industry.</p> <p><a href="http://tru.ca/water">tru.ca/water</a></p>	<ul style="list-style-type: none"> <li>All English 12, or IELTS 6.5, or equivalent</li> <li>Math 11, or equivalent</li> <li>Recommended: Chemistry 11, or equivalent and Biology 11, or equivalent</li> </ul> <p><b>Limited seats</b></p>	<ul style="list-style-type: none"> <li>Hazardous Materials Specialist</li> <li>Water Quality Technician</li> <li>Municipal Water and Wastewater Quality Technician</li> </ul>	<ul style="list-style-type: none"> <li>Microbiology and Toxicology</li> <li>Management and Leadership Skills</li> <li>Source Water Protection Management</li> <li>Wastewater Utility</li> <li>Mechanical Systems</li> </ul>
<p><b>Water and Wastewater Utilities Certificate</b></p> <p>Learn to effectively operate and maintain water and wastewater treatment, distribution and collection systems and start your career in an in-demand trade with this entry-level eight-month program. Your certificate credits count towards the Water and Wastewater Technology diploma program.</p> <p><a href="http://tru.ca/water">tru.ca/water</a></p>	<ul style="list-style-type: none"> <li>All English 12, or IELTS 6.5, or equivalent</li> <li>Recommended: Math 11, or equivalent, Chemistry 11, or equivalent and Biology 11, or equivalent</li> </ul> <p><b>Application Deadline</b> March 1</p>	<ul style="list-style-type: none"> <li>Lab Technician</li> <li>Wastewater Treatment Plant Operator</li> <li>Eco-toxicologist</li> <li>Landfill Engineer</li> </ul>	<ul style="list-style-type: none"> <li>Filtration</li> <li>Coagulation and Particle Removal</li> <li>Water Chemistry</li> <li>Water Treatment</li> <li>Introduction to Wastewater</li> </ul>

# HOW TO APPLY

## Apply now to study at TRU



Need help? Live chat with our international student advisors at: [truworld.ca](https://truworld.ca) or visit [tru.ca/justask](https://tru.ca/justask)

## 1 Choose your program and start date

Programs are found on pages 22–36. Check admission requirements and make your program choice.

### Application deadlines

Winter (January) | Oct 1

Summer (May) | Feb 1

Fall (September) | May 1

## 2 Apply

### Submit your application online at:

[tru.ca/forms/truworld/apply](https://tru.ca/forms/truworld/apply)

### or apply by email to:

[iapply@tru.ca](mailto:iapply@tru.ca) (undergraduate and post-graduate studies)

[igrad@tru.ca](mailto:igrad@tru.ca) (international graduate studies)

### or apply by mail:

International Admissions  
Thompson Rivers University  
805 TRU Way  
Kamloops, BC Canada V2C 0C8  
Tel: +1-250-828-5252  
Fax: +1-250-371-5513

### Transcripts and documents

- Submit all required supporting documents including proof of language proficiencies.
- Current high school students, submit final grade 11 and interim grade 12 transcripts.
- Submit transcripts from all previous post-secondary institutions (if applicable).
- Original transcripts must be provided before your arrival at TRU, otherwise you will not be allowed to register for courses at TRU.

### Application fee

A non-refundable application fee of \$100 CAD must accompany your application.

### TRU Refund Rules

Students should familiarize themselves with TRU's refund rules prior to submitting payment for their studies. All new international applicants to TRU should be aware that their first semester tuition fees are non-refundable and non-transferable. After receiving the Letter of Acceptance the applicant is expected to begin their studies at TRU.

Students withdrawing due to a failure to obtain a student permit prior to arrival at TRU will be entitled to a full refund of tuition and general fees invoiced less a \$200 CAD administration fee. Students must notify TRU in writing and provide documentation prior to the start of the semester. Processing time may take up to 8 weeks.

New students who wish to defer the start of their first semester of study to a future semester may do so only once and up to a maximum of one calendar year.



## 3 Next steps

**Processing:** completed applications will normally be processed within 10-15 business days.

**Pre-acceptance:** TRU will send a pre-acceptance letter indicating (a) the program to which you have been accepted and (b) any conditions of your acceptance.

**Submit:** you should submit the required fees for your first semester of study (as outlined in your pre-acceptance letter).

**Final acceptance:** upon receiving payment of tuition and general fees, TRU will send an official letter of acceptance.

**Housing:** either make arrangements with the accommodation directly or use the TRU World service to secure your room. Students must pay a \$150 CAD accommodation application fee when using the service through TRU World.

**Student visa:** use your official TRU letter of acceptance to apply to the nearest Canadian Embassy or consulate for a student visa.

**Airport pickup:** airport pickup is available only at the Kamloops airport. Additional charges may apply.

## 4 Payment

- **Online application fees** can be paid by credit card.
- **Paper application fees** can be paid by bank/wire transfer or through our online payment form. ([tru.ca/forms/truworld/admpay](https://tru.ca/forms/truworld/admpay))
- **Tuition fees** can be paid by bank transfer or through your MyTRU account, or by credit card by contacting the TRU Cashier (+1-250-371-5646).

Send a copy of your financial payment confirmation to [iapply@tru.ca](mailto:iapply@tru.ca) for undergraduate studies and to [igrad@tru.ca](mailto:igrad@tru.ca) for master's studies.

Thompson Rivers University  
Acct #1105-935  
Transit # 07200  
Routing Number: 000107200  
Swift code: BOFMCAM2  
Bank of Montreal  
101F-1180 Columbia Street West  
Kamloops, BC, Canada V2C 6R6





**THOMPSON  
RIVERS  
UNIVERSITY**

**#mytru | [truworld.ca](http://truworld.ca)**

805 TRU Way, Kamloops, BC, Canada V2C 0C8 | T: +1-250-828-5252 | F: +1-250-371-5513  
Inquiries: [tru.ca/justask](http://tru.ca/justask) | Applications: [truworld.ca/apply](http://truworld.ca/apply)

