



## Where is your research taking you?

Once again, CBC Radio is planning a summer series featuring TRU faculty and graduate student research. To participate, [please submit](#) a brief, plain-language description of your research, as well as your contact information. Also, if you are disseminating your research at conferences this summer, [tell us](#), as this information will help populate the research world map in the 2017-18 [Annual Report on Research](#). For more information, contact Danna Bach, [dbach@tru.ca](mailto:dbach@tru.ca).

### *Research News*

#### *Write for The Conversation Canada, a workshop with Editor Scott White*

**When:** May 15, 10 am - Noon

**Where:** OM 4731

Faculty are invited to join Scott White, editor of *The Conversation Canada*. You will leave this workshop with a plan for how to bring your expertise and your research findings to a global audience of more than 35 million, with minimal effort.

[Read more](#)



#### *Update your Bio page, and join the Experts List*

Summer is a great time to update your official [Bio Page](#), and at the same time, join our new, searchable [Experts List](#). The list is a great resource, and can be used to mobilize your knowledge, build partnerships and attract graduate students. Complete this simple [sign-up form](#) to be added to the directory.

[You are invited | Interior University Research Coalition](#)

A memorandum of understanding was signed recently between the University of Northern BC, TRU and UBC Okanagan, creating The Interior Universities Research Coalition (IURC). The IURC is hosting its first annual research symposium on **May 31, 2018 at UBC Okanagan**. This symposium provides an opportunity for researchers across the three campuses to connect, and will introduce collaborative funding opportunities and possible research team building opportunities.

To register for the symposium, [please fill out this form](#).

## *Research Training Recognition Fund | Deadline extended*

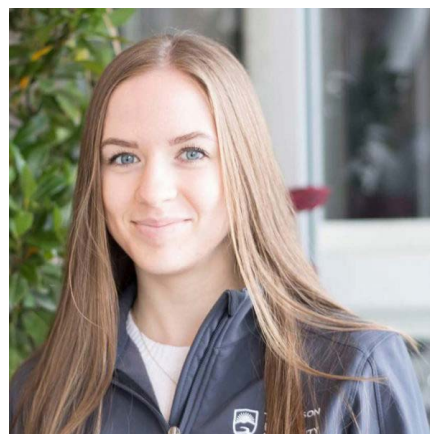
The deadline for the Research Training Recognition Fund (RTRF) for fall 2018 has been extended to **May 31, 2018**. Faculty receiving or currently holding multi-year Tri-Agency research grants are eligible to receive a reallocation of workload to facilitate their direct involvement in the enhanced research training of undergraduate and graduate students.

## *Research Spotlight*

### *Sharing a passion for research peer-to-peer*

TRU's new Undergraduate Research Ambassadors and Graduate Research Mentors have been announced for the 2018-19 academic year.

[Read more](#)



### *Let the cars do the talking*

Dr. Ning Lu is developing algorithms that will improve vehicle safety, transportation scheduling, traffic control and energy conservation.

[Read more](#)

### *TRU team receives \$300K provincial grant for invasive species research*

Dr. Lauchlan Fraser's research team was awarded a

\$300,000 provincial grant to help manage invasive species in Merritt-area grasslands.

[Read more](#)



### *Bats, wine, wildfire — research programs boosted by collaboration grants*

TRU's Tri-University Major Collaboration Grants allow mobility and academic opportunities for faculty and students within the BC Interior.

[Read more](#)

### *State-of-the-art sensors take flight over BC grasslands*

Dr. David Hill's range management research was given a \$200,000 boost from the Canada Foundation for Innovation.

[Read more](#)



## *Congratulations*



### *Excellent Scholarship*

Dr. Chris Hunt has been awarded the Excellence in Scholarship Award for sustained contributions to his field.

[Read more](#)

## *Cannes screenplay finalist*

Dr. George Johnson's screenplay, *Peace Pledge*, was selected as a finalist in the Cannes Screenplay Contest in the Historical Category. The screenplay previously took top honours in Toronto's WILDsound Film Festival Screenplay Competition, and received Honorable Mention in the 2015 Euroscript Screenwriting Competition. *Peace Pledge* is based on the true story of Canon Dick Sheppard and the Peace Pledge Union of the 1930s, the strongest pacifist movement in history.

## *Visiting Research Scholar Fellowship awarded*

Dr. Muhammad Mohiuddin was awarded the Think-Visegrad Fellowship, which will allow him to stay at the Institute for Foreign Affairs and Trade (IFAT), Budapest, Hungary for one month this summer where he will conduct research on business collaborations between Canadian and Central European firms.

## *Tri-agency news*

### *NSERC implements policy changes to CRD and IRC Programs*

NSERC is pleased to announce policy changes to its Collaborative Research and Development (CRD) and Industrial Research Chair (IRC) Programs to broaden their impact and expand eligibility. These changes will also provide faster and simpler delivery of funding to support research partnerships in Canada and to diversify the innovation ecosystem in Canadian universities.

NSERC is broadening the impact of its grants by:

- Allowing Canadian university researchers to partner with multinational companies
- Having foreign companies collaborate with Canadian companies on an equal basis

NSERC is simplifying the access to CRD and IRC grants by:

- Providing a faster response by no longer reviewing Intellectual Property Agreements, empowering universities to negotiate satisfactory arrangements with their partners, in compliance with NSERC's IP Policy.

If you have any questions or comments please contact [RPP@nserc-crsng.gc.ca](mailto:RPP@nserc-crsng.gc.ca).

## *Impact of Federal Budget 2018 on Discovery Grants*

Following the announcement of federal budget 2018, the new funding for NSERC is ramping up from \$44 million per year in 2018-19 to \$90.1 million per year in 2021-22. Budget 2018 makes clear that these and other science investments "will be tied to clear objectives and conditions so that Canada's next generation of researchers – including students, trainees and early-career researchers – is larger, more diverse and better supported." NSERC's intent is to invest the maximum of these funds into the Discovery

Program, while taking into account Budget 2018 priorities for Equity, Diversity and Inclusion, and support for Early Career Researchers. It is expected this will result in an increase in the average size of grants awarded in the 2018 Discovery Grants competition.

### *Research Tools and Instruments Program update*

The number of selection criteria for the RTI program has been reduced from five to three. The selection criteria are as follows:

- Need, urgency and suitability of equipment for the research programs
- Merit of the research programs supported by the equipment and excellence of the applicant(s)
- Importance of the equipment for the training of highly qualified personnel

In addition to this change, there will also be applied weighting for each criterion. The weighted scoring method is expected to provide applicants with more detailed scoring on their proposals.

### *Discovery Grant 2019: Notification of Intent to Apply*

It is time to start preparing your Discovery Grant application. A **Notification of Intent to Apply (NOI)** must be submitted by the deadline date of Aug. 1, 2018, 8 p.m. (ET). The NOI is mandatory when applying for a Discovery Grant. You must submit your NOI and the NSERC version of the [Canadian Common CV \(CCV\)](#) using the [Research Portal](#). We encourage you to start completing your CCV early. NSERC and the Research Office will be hosting [webinars](#) and information sessions to assist the research community. For more information on the Discovery Grants and RTI programs, please contact [Anita Sharma](#).

> **The Research Office** invites interest from faculty who are not currently holding a Discovery Grant, and will be submitting an NOI on Aug. 1 to the Fall 2018 competition. This award provides access for up to \$2,500 to support activities that will enhance new grant proposals with expenditures directly related to the research. Please submit a one-page NOI outlining your research program, a specific budget, and a brief description of how this funding opportunity will strengthen your application to [ansharma@tru.ca](mailto:ansharma@tru.ca) by May 15.

### *CIHR Equity & Diversity Questionnaire for applicants*

**As of May 15, 2018, application participants for all CIHR programs must complete an Equity and Diversity Questionnaire.** This mandatory questionnaire must be completed before an individual's next application to CIHR can be submitted. Once you complete the questionnaire, your information is then saved for future competitions

### *Funding Opportunities (external)*

**For information about upcoming external funding opportunities, visit the [Funding Calendar](#)**

\* *Note: Internal deadlines are two-weeks prior to the listed, agency deadline*

## *SSHRC Connection Grants*

**Deadlines: Aug. 1, Nov. 1, Feb. 1**

**Value: \$7,000- \$25,000 for events and up to \$50,000 for outreach activities**

Connection Grants support events and outreach activities geared toward short-term, targeted [knowledge mobilization](#) initiatives. Events and outreach activities funded by a Connection Grant may often serve as a first step toward more comprehensive and longer-term projects potentially eligible for funding through other SSHRC funding opportunities listed in SSHRC's [Funding search tool](#).

## *BC Parks Living Lab for Climate Change and Conservation*

**Deadline: May 13**

**Value: \$10,000 - \$40,000**

This program promotes B.C.'s protected areas as places to learn about the effects of climate change and how to mitigate and manage for these effects. Funding supports public academic researchers to conduct climate change research in B.C.'s protected areas.

## *Canada Foundation for Innovation — John R. Evans Leaders Fund*

**Deadline: May 15 (LOI for October competition)**

Researchers are invited to submit applications for the October JELF competition. The JELF program helps universities acquire infrastructure funding. Applicants must be engaged in:

- cutting edge research program requiring proposed infrastructure, and
- providing an enriched training environment

## *The Killam Program of the Canada Council for the Arts: Killam Research Fellowships*

**Deadline: May 15**

These awards, which are administered by the Canada Council, provide support to scholars of exceptional ability who are engaged in research projects of broad significance and widespread interest.

## *CIFAR: AI & Society Workshops*

**Deadline: May 28**

**Value: \$80,000**

CIFAR is inviting the academic community to submit proposals for workshops on the social, ethical, economic, and legal dimensions of artificial intelligence. Open to applicants anywhere in the world, this call will provide up to \$80,000 to support short-term collaboration between international, interdisciplinary groups. Workshops must be

comprised of a core team of three to four international and interdisciplinary researchers or practitioners who intend to address topics of global importance. At least one core team member must be based in Canada.

## *CIHR Collaborative Health Research Projects*

**Deadlines: May 29 (LOI); Full application, Oct. 30**

**Value: \$150,000 - \$225,000 per year for 3 years**

This funding opportunity is offered by CIHR in partnership with NSERC and in collaboration with SSHRC. In the context of improved health for Canadians, the objectives of the Collaborative Health Research Projects are to:

- Translate research results to knowledge/technology users (KTUs) and other stakeholders;
- Encourage the natural sciences and/or engineering and health research communities to collaborate and integrate their expertise;
- Advance interdisciplinary research leading to knowledge and technologies;
- Benefit Canada by improving the Canadian healthcare system and/or services;
- Lead to economic opportunities in Canada (where appropriate); and
- Provide training opportunities in collaborative and interdisciplinary research of relevance to health, while preparing them for employment opportunities in the private, public or not for profit sectors.

## *MSFHR Reach Program*

**Deadline: May 30**

**Value: \$10,000**

The Reach Program supports researcher and research user partners to co-develop dissemination activities that will inform and/or improve further health research, practice and/or policy-making; supports the dissemination of research evidence beyond the normal peer group of the researcher; and, facilitates the uptake of research evidence for those who use health research (patients, the public, policy makers, etc.)

## *NSE: International Information Science Foundation Visiting Researcher Support Program*

**Deadline: May 31**

**Value: \$1,953.60 travel grants to Japan**

The International Information Science Foundation in Japan has been supporting the travel expenses of outstanding young computer scientists who wish to visit Japan for research purposes. Supported activities are: Presentation at an international conference on computing science held in Japan; Conducting research at a Japanese university or research institute.

## *Gerda Henkel Stiftung – Research Projects*

**Deadline: June 13 and ongoing for smaller grants (max €15,000)**

**Value: Up to €120,000**

Supports historical humanities projects in the field of archaeology, art history, historical Islamic studies; history, history of law, history of science, and prehistory and early history. The Foundation funds will support travel abroad, childcare allowance (if applicable), and material expenses.

### *E-Rare-3 Joint Transnational Call (2018)*

**Deadline: June 14**

**Value: Up to \$125,000 per year, for up to 3 years**

The ERA-NET “E-Rare” for research programmes on rare diseases has been extended to a third phase “E-Rare-3” (2014-2019) to further help in coordinating the research efforts of European, Associated and non-European countries in the field of rare diseases and implement the objectives of the International Rare Disease Research Consortium (IRDiRC). CIHR is pleased to be partnering with the Fonds de recherche du Québec – Santé (FRQS) once again in the context of this ERA-Net.

### *SSHRC Partnership Engage Grants*

**Deadline: June 15, Sept. 15, Dec. 15**

**Value: \$7,000- \$25,000**

These grants respond to the objectives of the [Insight](#) the [Connection](#) programs, and provide short-term support for partnered research activities that will inform decision-making at a single partner organization from the public, private or not-for-profit sector. These partnerships are meant to respond to immediate needs and time constraints facing organizations in non-academic sectors. SSHRC welcomes applications involving [Aboriginal research](#), as well as those involving [research-creation](#).

### *Mohamed bin Zayed Species Conservation Fund*

**Deadline: Last day of June & December**

**Value: Up to \$25,000 per project**

This fund is a significant philanthropic endowment established to: provide targeted grants to individual species conservation initiatives; recognize leaders in the field of species conservation; and, elevate the importance of species in the broader conservation debate.

### *NSERC Discovery Grants*

**Deadline: Aug. 1 (NOI); Full application: Nov. 1**

**Value: varies**

The Discovery grants program supports ongoing program of research with long-term goal supporting the creativity and innovation that are at the heart of all research advances in natural sciences and engineering.



## *Harry Frank Guggenheim Foundation – Research Grants*

**Deadline: Aug. 1**

**Value: \$15,000–\$40,000 USD/year**

Seeking proposals from any of the natural and social sciences and the humanities that promise to increase understanding of the causes, manifestations, and control of violence and aggression. Highest priority is given to research that can increase understanding and amelioration of urgent problems of violence and aggression in the modern world, in particular, violence and aggression in relation to social change, intergroup conflict, war, terrorism, crime, and family relationships. Priority will be given to areas and methodologies that have not received adequate attention and support from other funding sources.

## *SSHRC Insight Grants*

**Deadline: Oct. 15**

**Value: Stream A: \$7,000 - \$100,000, Stream B: \$100,001 - \$400,000**

These grants support long-term research initiatives. The goal of the program is to build knowledge and understanding about people, societies and the world by supporting research excellence in all subject areas eligible for funding from SSHRC. Applications are accepted in two streams now depending upon the budget request.

## *NSERC Research Tools and Instruments grants*

**Deadline: Oct. 25**

**Value: \$7,001-\$150,000**

Research Tools and Instruments (RTI) grants foster and enhance the discovery, innovation and training capability of university researchers in the natural sciences and engineering by supporting the purchase of research equipment and installations.

## *SSHRC Partnership Development Grants*

**Deadline: Nov. 30**

**Value: \$75,000 - \$200,000**

These grants provide support to teams/partnerships, led by a project director, to: i) develop research and related activities in the social sciences and humanities, including knowledge mobilization and the meaningful involvement of students and new scholars, by fostering new partnerships for research and related activities involving existing and/or potential partners; or ii) design and test new partnership approaches for research and/or related activities that may result in best practices or models that either can be adapted by others or have the potential to be scaled up to a regional, national or international level.

## *NSERC Collaborative Research and Development Grants*

**Deadline: Continuous**

**Value: Up to \$500,000 per project**

CRD Grants support well-defined projects undertaken by university researchers and their private-sector partners. Direct project costs are shared by the industrial partner(s) and NSERC. Projects may range from one year to five years in duration, but most awards are for two or three years.

## *Canada Council for the Arts: Explore and Create*

**Deadline: Continuous**

**Award value: \$25,000 per year for up to two years**

The Research and Creation component of Explore and Create supports the initial stages of the creative process. Grants provide support for creative research and project development.

## *NSERC Connect Grants*

**Deadline: Continuous**

**Value: Level 1, up to \$5,000; Level 2: up to \$25,000**

Connect grants provide targeted financial support to encourage post-secondary researchers at universities to connect with industry and other knowledge end-user communities in order to form new partnerships.

Level 1: For domestic travel costs to develop new academic-industry partnership

Level 2: For activities aimed at developing or promoting new academic-industry partnerships, student-industry training opportunities, and/or goals of [NSERC's 2020 Strategic Plan](#).

## *Mitacs Accelerate*

**Deadline: Continuous**

**Value: \$15,000**

Full-time graduate students are eligible for this award that provides an opportunity to apply their skills in a non-academic environment, and to broaden their professional network.

## *Gordon and Betty Moore Foundation – Grants for Science and Environmental Conservation*

**Deadline: Continuous**

**Value: \$500,000 USD**

Key initiatives include marine microbiology, earthquake early warnings, particle accelerators, and more. The Environmental Conservation program seeks to balance long-term conservation with sustainable use through protecting critical ecosystems, establishing models for collaboration that can be replicated and expanded around the globe, and creating lasting change in how land, freshwater and coastal marine ecosystems are

managed.

## *Funding Opportunities (internal)*

### *Community-Driven Research Fund*

**Deadline: Continuous intake until October 2019, up to 10 awards available**

**Value: \$2,500. Matching Contributions of up to \$2,500 in cash and/or in-kind support is required from the community organization**

Funds are still available through the Community-Driven Research Fund, which is designed to support research that responds directly to community needs, builds research partnerships with community organizations in the Thompson Nicola Cariboo region, provides opportunities for students to become involved in community-based research, and helps faculty and their community partners become more competitive for external funding.

## *Knowledge Mobilization*

### *Presentations & Exhibitions*

**Hall, Margaret.** "Advance Planning." Presented as part of the Royal Inland Hospital Foundation Lecture Series, Kamloops, BC. April 26, 2018.

**Hall, Margaret.** Keynote: "Relational Autonomy, Vulnerability Theory and Making it Real," Macquarie University Faculty of Law, Sydney, Australia. March 23, 2018.

### *Published books & articles*

Bailey, Jacob M., **Matthew W. Reudink**, Stefanie E. LaZerte, **Mark Paetkau**, Chris J. Johnson, **David J. Hill**, Ken A. Otter. "Using radio frequency identification (RFID) to investigate the gap-crossing decisions of Black-capped Chickadees (*Poecile atricapillus*)." *American Ornithological Society*. 135.3 (2018): 449-460.

Bonderud, E.S., K.A. Otter, T.M. Burg, **K.L.D Marini**, **M.W. Reudink**. "Patterns of extra-pair paternity in mountain chickadees." *Ethology*. 124 (2018):378-386.

Cheng, Quan, and **Alex Ng**. "State Ownership, Governance and Financial Performance of Chinese State Owned Enterprises." *Journal of Accounting, Finance and Economics*. 8.1 (2018): 42-57.

**Cox, Raymond**, Ajit Dayanandan, Han Donker, and John R. Nofsinger. **Confucius confusion: analyst forecast dispersion and business cycles**. *Review of Behavioral Finance*. (2018).

Grimwood, Bryan S.R., **Kellee Caton**, and **Lisa Cooke**, editors. *New Moral Natures in Tourism*. Routledge Ethics of Tourism. (2018).

**Garris, Heath W.**, et al. "Short-Term Microbial Effects of a Large-Scale Mine-Tailing Storage Facility Collapse on the Local Natural Environment." *PLoS One* 13.4 (2018)*ProQuest*.

Martínez-Rodríguez, Héctor, **Kingsley Donkor**, **Sharon Brewer**, Marcela Galar-Martínez, Nely SanJuan-Reyes, Hariz Islas-Flores, Livier Sánchez-Aceves, Armando Elizalde-Velázquez, and Leobardo Manuel Gómez-Oliván, "[Metoprolol induces oxidative damage in common carp \(\*Cyprinus carpio\*\)](#)." *Aquatic Toxicology*, 197 (2018): 122-135.

**Tawhid, Mohamed A.**, and Kevin B. Dsouza. "Hybrid binary dragonfly enhanced particle swarm optimization algorithm for solving feature selection problems." [Mathematical Foundations of Computing](#). 1.2 (2018): 181-200.

Weller, Martin, Katy Jordan, **Irwin DeVries**, and Viv Rolfe. "[Mapping the open education landscape: citation network analysis of historical open and distance education research](#)." *Open Praxis* [Online], 10.2 (2018): 109-126. Web. 11 May. 2018



*Find us on Facebook*

*Research news is always welcome. Please email [research@tru.ca](mailto:research@tru.ca) if you have news, events or accomplishments you'd like to share.*

