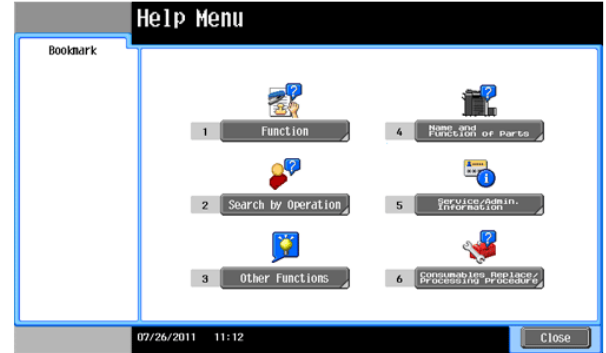
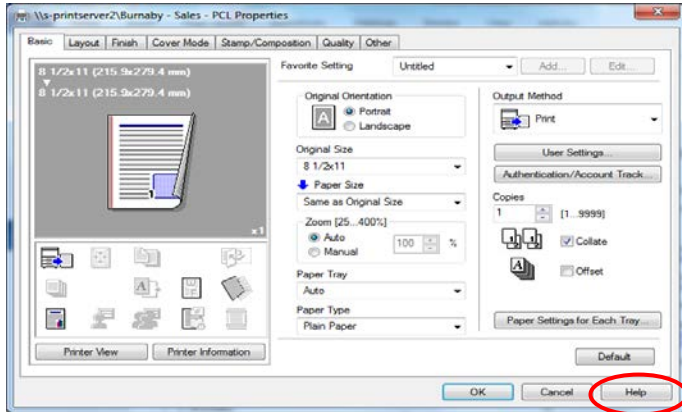


KONICA MINOLTA SUPPORT & RESOURCES

- Delivered with the device are CDs with **User Guides**
- **Help** button on the print driver and the **Guidance** button on device control panel:



- Konica Minolta website for **User Guides**:

For **364e**: <http://kbsmanuals.konicaminolta.us/554e/index.html>

For **c308**: <http://kbsmanuals.konicaminolta.us/bizhubC368/index.html>

For **c3850FS**: <http://kbs.konicaminolta.us/wps/portal/web/home/support/manuals>

Then select **Office Systems**, **c3850FS** and choose the **User Guide** you wish to view (ie. Copy, Print, Scan, etc):



- For additional training there is **iTraining**. Login with the user name and password below. Select your device model and you can search within each Chapter (or review items under Contents) to watch particular feature / function videos.

<http://itraining.konicaminolta.eu/en/login.html>

User name: **konicaminolta** Password: **bizhub**

- Thompson Rivers University internal link for additional reference materials on the devices:

<http://www.tru.ca/its/employees/iprint/printers.html>

- **Service / Questions**: **1-800-263-4410** OR email: service@bt.konicaminolta.ca

Users can call / email to ask questions, place service calls. ***Please quote your ID # when requesting support (found on the label - front of the device).**

- **Supplies**: Email the **TRU Print Shop** for supplies (**toner, waste toner boxes and staples**) Printshop@tru.ca.

- **Clean Planet Recycling Program**: All Konica Minolta cartridges are recyclable and should be taken to the **PrintShop** for return to Konica Minolta.