



# International Recruitment

2024/2025



EduCanada<sup>®</sup>  
Un monde de possibilités  
A world of possibilities

FOR THE



**THOMPSON  
RIVERS  
UNIVERSITY**



**106**  
COUNTRIES & REGIONS  
REPRESENTED ON  
CAMPUS



**31**  
STUDENTS  
ON AVERAGE PER CLASS

The world  
**needs  
you**



**Founded in 1970**, TRU is accredited by the Northwest Commission on Colleges and Universities (NWCCU) and a member of Universities Canada (AUCC) and Colleges and Institutes Canada (CICan).



**1 OF 6**  
RESEARCH  
UNIVERSITIES IN  
BRITISH COLUMBIA



**4,500**  
INTERNATIONAL  
STUDENTS



**14,000 +**  
ON-CAMPUS  
STUDENTS



**KAMLOOPS**

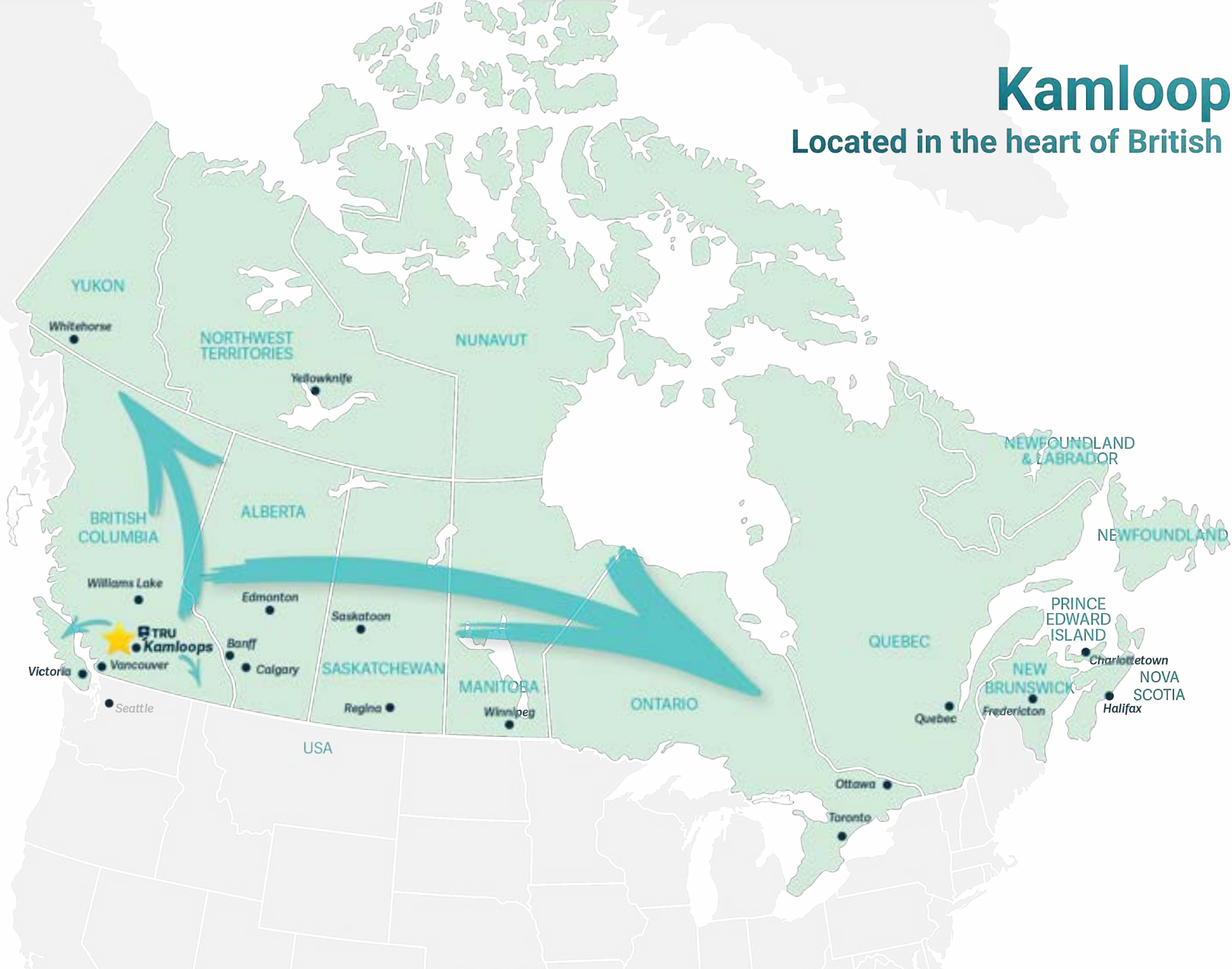




TRU

# Kamloops, BC

Located in the heart of British Columbia





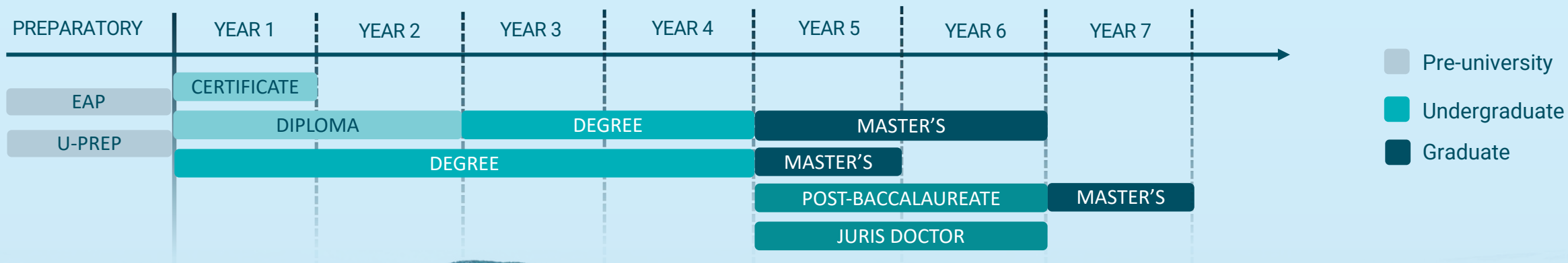


# STUDY AT TRU

Choose from over 140 programs.



For a complete program list,  
visit [truworld.ca/programs](https://truworld.ca/programs)





TRU

# A PLACE FOR ALL SEASONS

Kamloops has four distinct seasons and enjoys more than 2,000 hours of sunshine annually.

Summers are hot and dry, while winters offer the best of both worlds, with mild temperatures in low-lying areas and snow at higher elevations.

## Kamloops Climate Facts

- Hours of sunshine: 2075 hours
- Median high temp: +21.0°C
- Median minimum temp: -4.2°C
- Annual rainfall: 217.9mm

**SPRING** (10°C to 22°C)  
MARCH - MAY



**SUMMER** (27°C to 33°C)  
JUNE - AUGUST



**FALL** (10°C to 22°C)  
SEPTEMBER - NOVEMBER



**WINTER** (-5°C to +4°C)  
DECEMBER - FEBRUARY







TRU

# Kamloops, BC

ONE OF THE  
SUNNIEST  
CITIES IN BC



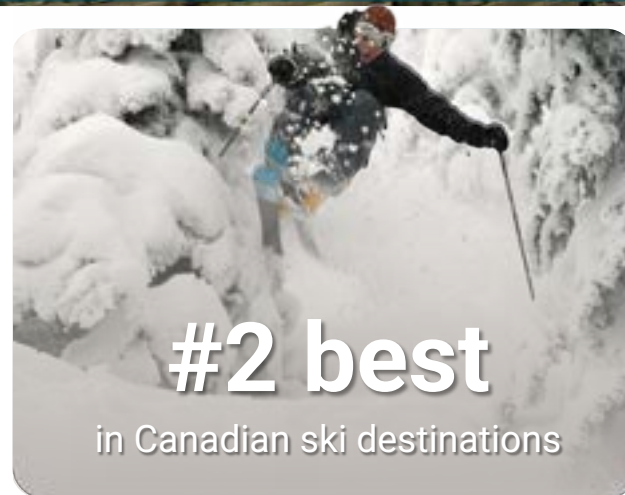
200+ LAKES NEARBY



Tournament Capital  
of Canada

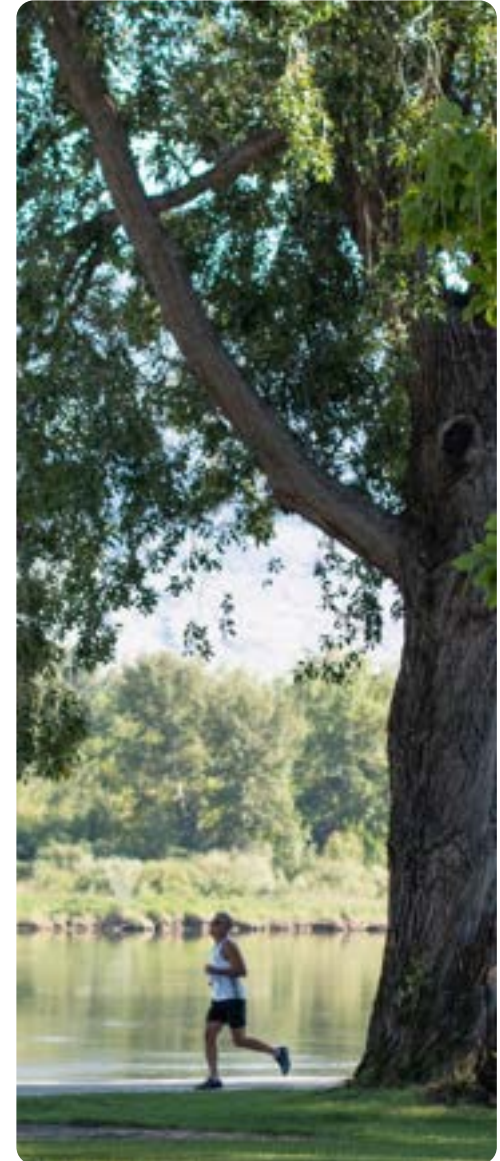


BC's friendliest city



#2 best

in Canadian ski destinations







TRU

# RECREATION

## KAMLOOPS IS THE CENTRE OF MANY ATTRACTIONS.

- Summer events and festivals
  - Music in the Park
  - Kamloops film festival
  - Downtown farmer's market
  - Kamloops Ribs Festival
- Ice hockey, curling, fishing, hiking, water sports and much more!



# KAMLOOPS INDUSTRIES & ECONOMIC SECTORS

## CORE INDUSTRIES



Transportation & Logistics



Healthcare



Forestry



Mining



Manufacturing



Agriculture



Retail



Finance

## EMERGING INDUSTRIES



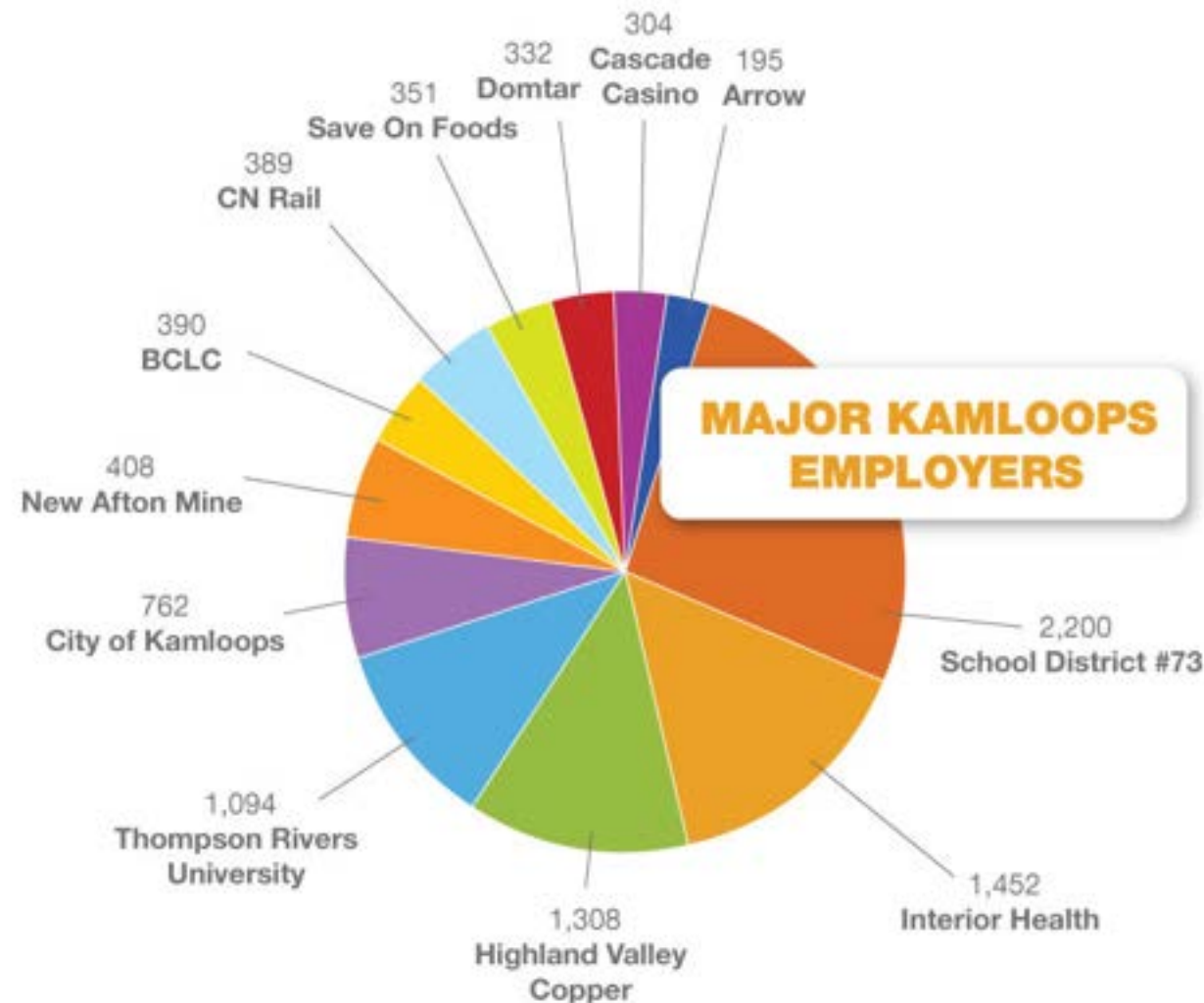
Hi-Tech



Green Energy



Tourism





GROW AND VALUE TIME

GROW AND VALUE TIME

GROW AND VALUE TIME

PROGRAMS



# FACULTY OF ADVENTURE, CULINARY ARTS & TOURISM

## POST-BACCALAUREATE DIPLOMAS

Tourism Destination Development

## BACHELOR OF TOURISM MANAGEMENT

Adventure Studies

Entrepreneurship

Tourism Management

## DIPLOMAS

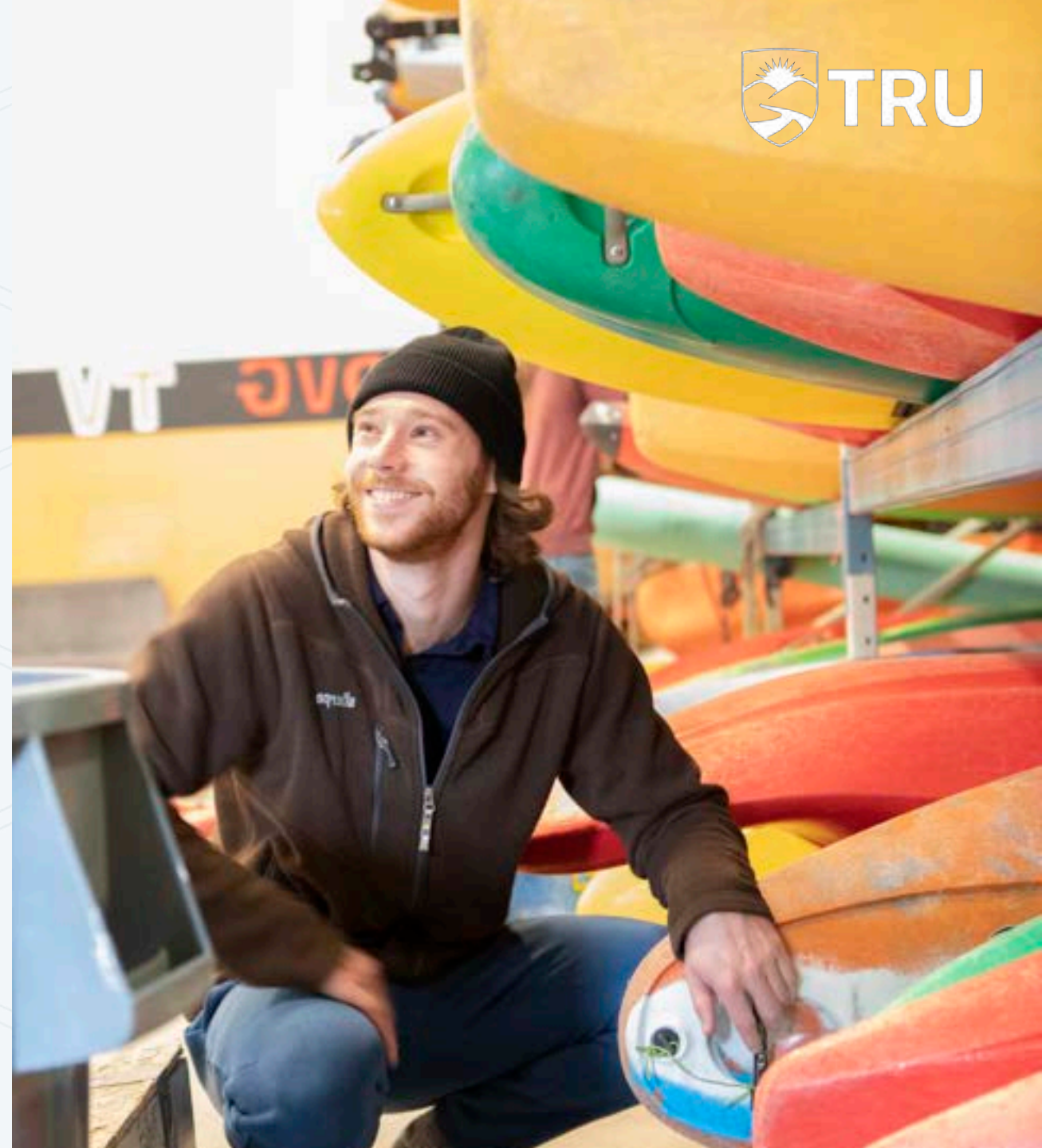
Resort & Hotel Management

Tourism Management

Sport Event Management

Culinary Arts

Events & Conventions Management





# FACULTY OF ARTS

## GRADUATE PROGRAM

Master of Arts in Human Rights and Social Justice

## BACHELOR DEGREES

Bachelor of Arts

PHILOSOPHY

ECONOMICS

ENGLISH

HISTORY

MATHEMATICS

COMMUNICATIONS

PSYCHOLOGY

ECONOMICS & MATH

ECON & POLI STUDIES

SOCIOLOGY

THEATER ARTS

Bachelor of Journalism

Bachelor of Fine Arts

Bachelor of Interdisciplinary Studies

## DIPLOMAS

General Studies

Fine Arts

Associate of Arts

Visual Arts

Police & Justice Studies

## CERTIFICATES

Aboriginal Tourism

Modern Languages

Literary & Art History

Visual Arts Studio





# BOB GAGLARDI SCHOOL OF BUSINESS & ECONOMICS

## GRADUATE PROGRAM

Master of Business Administration

Master of Environmental Economics and Management

Master of Science in Environmental Economics and Management

## POST-BACCALAUREATE DIPLOMAS

Accounting

Business Administration

Economics

Economics & Political Studies

Mathematics & Economics

Entrepreneurship

Finance

Human Resource Management

International Business

Marketing

Supply Chain Management





# BOB GAGLARDI SCHOOL OF BUSINESS & ECONOMICS

## BACHELOR OF BUSINESS ADMINISTRATION

ACCOUNTING

ECONOMICS

ENTREPRENEURSHIP

GENERAL BBA

FINANCE

MARKETING

SUPPLY CHAIN MGMT

HUMAN RESOURCES

INTL BUSINESS

## DOUBLE DEGREE

BBA + Bachelor of Computing Science

BBA + Bachelor of Arts

## DIPLOMAS

Accounting Technician Diploma

Management Diploma

Associate of Commerce & Business Administration Diploma

# FACULTY OF SCIENCE

## GRADUATE PROGRAMS

Master of Science in Data Science

Master of Science in Environmental Science

## POST-BACCALAUREATE DIPLOMAS

Post-Baccalaureate Diploma in Applied Data Science

## BACHELOR DEGREES

Bachelor of Science

ANIMAL BIOLOGY

BIOLOGY

CMMB

CHEMICAL BIOLOGY

CHEMISTRY

COMPUTING SCIENCE

COMP. SCI & MATH

ECOLOGY & ENV. BIO

ENV. CHEMISTRY

GENERAL SCIENCE

MATHEMATICS

MATH & ECON

PHYSICS

PRE-HEALTH

Bachelor of Software Engineering

Bachelor of Computer Engineering

Bachelor of Comp. Science

Engineering Transfer Program

Bachelor of Natural Resource Science

## DIPLOMAS

Applied Sustainable Ranching Diploma

Computing Science Diploma

Forestry Transfer Diploma







# HEALTH SCIENCES & NURSING

## GRADUATE PROGRAMS

Master of Nursing

## BACHELOR DEGREES

Bachelor of Science in Nursing

## DIPLOMAS

Respiratory Therapy Diploma

Practical Nursing Diploma

FALL 2024



# SCHOOL OF TRADES & TECHNOLOGY

## DIPLOMAS

Horticulture Diploma

Power Engineering Diploma

Instrumentation Engineering Technology Diploma

Architecture and Engineering Technology

Water and Wastewater Technology Diploma

## CERTIFICATES

Horticulture Certificate

Water and Wastewater Utilities Certificate

## TRADES FOUNDATION PROGRAMS

Metal Fabricator

Carpentry

Electrical

Plumbing

Welding

Automotive Service Technician

Electrical/Industrial Mechanic

Instrument & Control Technician

Industrial Mechanic (Millwright) Machinist

Carpentry/Residential Construction

Electrical/Industrial Mechanic

Heavy Duty Equipment Technician





# FACULTY OF EDUCATION & SOCIAL WORK

## GRADUATE PROGRAMS

Master of Education

Graduate Certificate of Educational Studies

## POST-BACCALAUREATE CERTIFICATE

Teaching English to Speakers of Other Languages (TESOL)

## BACHELOR DEGREES

Bachelor of Education – Elementary

Bachelor of Education – Secondary (STEM)

Bachelor of Social Work

## DIPLOMAS

Human Services Diploma

Early Childhood Education Diploma

## CERTIFICATES

Early Childhood Education Specialization Certificates

**SPECIAL NEEDS CERTIFICATE**

**INFANT & TODDLER CERTIFICATE**

English for Academic Purposes (EAP)



# FACULTY OF LAW

## JURIS DOCTOR

Juris Doctor in Law

## DIPLOMA

Police & Justice Studies Diploma





# FEATURED PROGRAMS



# POST-BACCALAUREATE DIPLOMA IN APPLIED DATA SCIENCE

Develop strong analytical, technical, and professional skills and foundations in the principles and practice of mathematics, statistics, and related computing technologies.

## Program Duration

2 Years

## Intakes

● May

## Admission Requirements

- ✓ Minimum GPA 3.0/4.0 in last 60 credits
- ✓ IELTS 7.0 (with no bands below 6.5)  
IELTS 6.5 (with no bands below 6) can also be accepted, but students must take 1 extra English course.

## Sample Jobs

- Data Analyst
- Business Analyst
- Data and Analytics Manager
- Database Administrator



# MASTER OF ARTS IN HUMAN RIGHTS & SOCIAL JUSTICE

Become a leader in the advancement of a just society  
– locally and globally.

## Program Duration

2 Years

## Intakes

- September

## Admission Requirements

- ✓ Minimum GPA 3.0/4.0 in last 60 credits
- ✓ IELTS 7.0 (with no bands below 6.5)
- ✓ Statement of intent
- ✓ CV or resume

## Sample Jobs

- Provincial, national or international NGOs
- Various levels of government
- Private sector companies adhering to corporate social responsibility





# CULINARY ARTS CERTIFICATE

Learn the fundamentals and artistry of food preparation in a hands-on environment.

## Program Duration

1 Year

## Intakes

● August

## Admission Requirements

- ✓ Grade 10 or equivalent
- ✓ Food Safe Level 1
- ✓ Successful entry assessment: [tru.ca/assessment](https://tru.ca/assessment)

## Sample Jobs

- Baker
- Cook/Chef
- Chocolatier
- Restaurant Manager
- Caterer



# BACHELOR OF ARTS IN COMMUNICATION & NEW MEDIA STUDIES

Study the aesthetics, narrative and theoretical aspects of technology, as well as computer-mediated communication.

## Program Duration

4 Years

## Intakes

● September    ● January    ● May

## Admission Requirements

- ✓ Grade 12
- ✓ IELTS 6.5 (with no bands below 6.0)

## Sample Jobs

- Communications Specialist
- Public Relations Specialization





# MASTER OF ENVIRONMENTAL ECONOMICS & MANAGEMENT

Guide the world towards sustainable businesses.

TRU is the highest-rated university in AASHE (Association for the Advancement of Sustainability in Higher Education).

## Program Duration

1-2 Years

## Intakes

● September    ● January    ● May

## Admission Requirements

- ✓ Bachelor's Degree
- ✓ Minimum GPA 3.0/4.0 in last 60 credits
- ✓ IELTS 7.0 (with no bands below 6.5)
- ✓ Interview, references, CV and letter of intent required

## Sample Jobs

- Commodities Broker
- Environmental Coordinator
- Sustainability Manager
- Energy Auditor



# POST-BACCALAUREATE DIPLOMA VS. MBA

TRU's Bob Gaglardi School of Business and Economics offers flexible programs. Explore interest areas, conduct research on a specific issue or complement your education in another program with applicable business theory and skills.

## About the Program

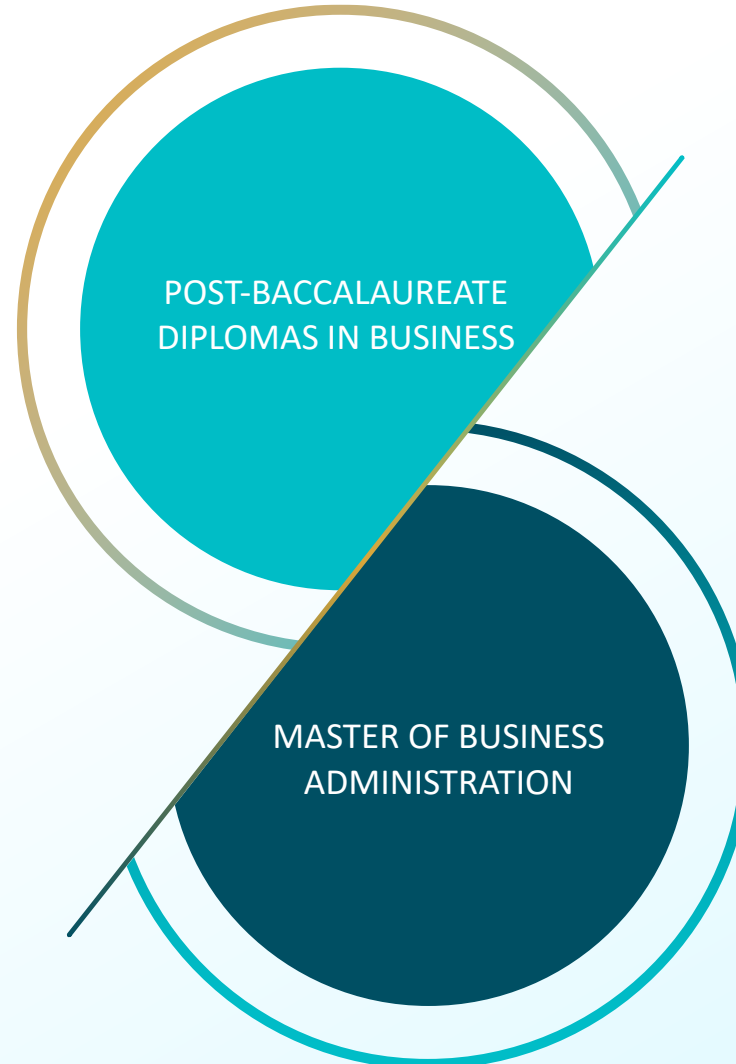
Students who want to acquire a specialty in an area of business with a hands-on approach.

## Program Duration

2 Years

## Program Requirements

Bachelor's Degree ✓  
IELTS 6.5 (no bands below 6.0) ✓



## About the Program

Students who want to gain corporate-level business training to pursue higher level positions in business.

## Program Duration

1-2 Years

## Program Requirements

- ✓ 3 to 4-year undergraduate degree
- ✓ Min. GPA 3.0/4.0 in last 60 credits
- ✓ IELTS 7.0 (no bands below 6.5)



# APPLIED SUSTAINABLE RANCHING DIPLOMA

Participate in real-life ranching operations in BC, Canada.

## Program Duration

2 Years

## Intakes

● August   ● November   ● January   ● May

## Admission Requirements

- ✓ Grade 12
- ✓ IELTS 6.5
- ✓ Two letters of reference

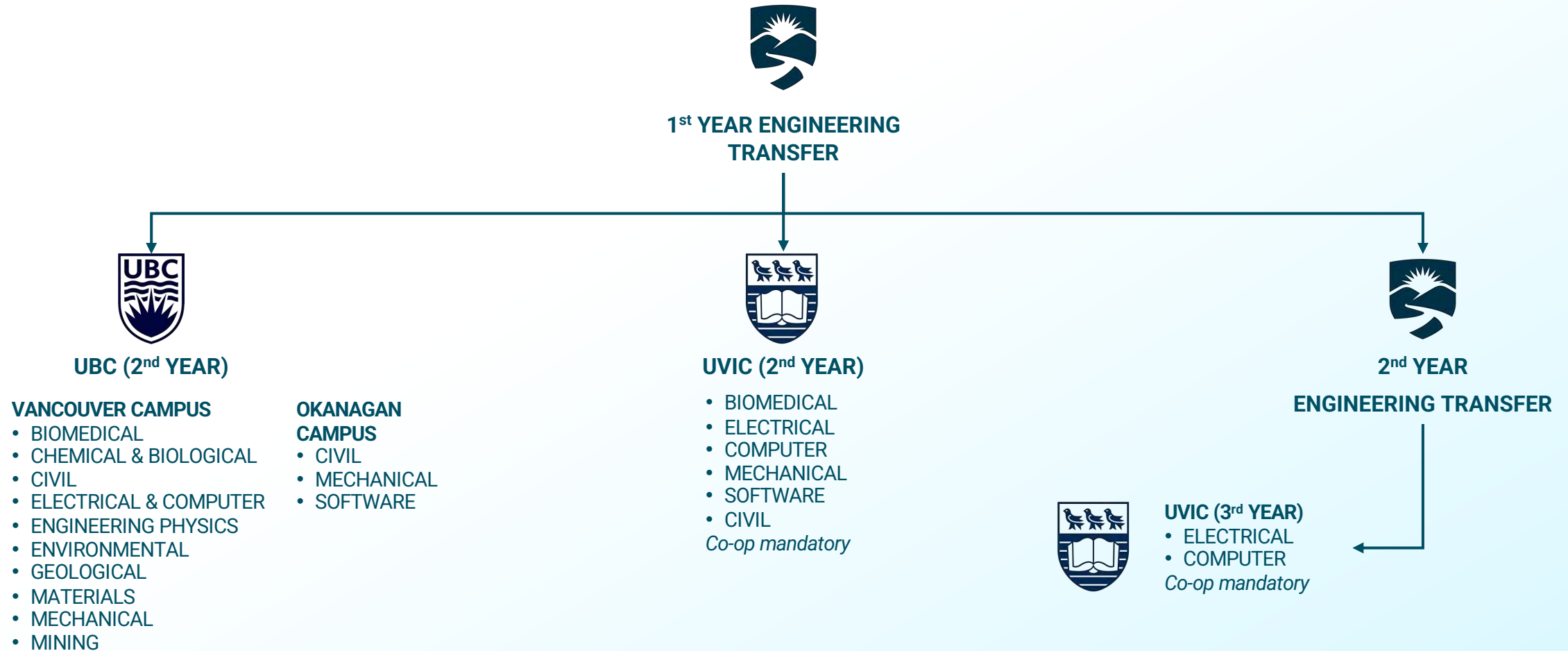
## Sample Jobs

- Farm or Ranch Manager
- Agriculture Producer
- Entrepreneur



# ENGINEERING TRANSFER PROGRAM

Get started on your engineering degree at TRU by taking one year of general study courses common to all engineering disciplines. This program transfers into the second year of a full engineering program at either UBC or UVIC or stay at TRU to complete the BEng in Software Engineering program.





# BACHELOR OF SOFTWARE ENGINEERING

Meet the demand for Canada's most in-demand skilled workers. The average Software Engineer salary in Canada is \$92,500/year or \$47.44/hour.

## Program Duration

4 years Academic + 1 Year Mandatory co-op

## Intakes

- September

## Admission Requirements

- ✓ Grade 12
- ✓ IELTS 6.5 (no bands below 6.0)
- ✓ Pre-Calculus 12, Chemistry 11, Physics 11 (all with minimum 67% or equivalent)

## Sample Jobs

- Software Application Development
- Software Testing
- Network Management and Operations



# BACHELOR OF COMPUTER ENGINEERING

Your gateway to a dynamic and exciting career in technology.

## Program Duration

4 years Academic + 1 Year Mandatory co-op

## Intakes

- September

## Admission Requirements

- ✓ Grade 12
- ✓ IELTS 6.5 (no bands below 6.0)
- ✓ Pre-Calculus 12, Chemistry 11, Physics 11 (all with minimum 67% or equivalent)

## Sample Jobs

- Embedded systems engineer
- Autonomous system design engineer
- Hardware design engineer
- Network engineer





# SOFTWARE ENGINEERING VS COMPUTER ENGINEERING

## About the Program

Deals with building and maintaining software systems, using systematic practices to ensure products are reliable and safe.

## Program Duration

4 YEARS ACADEMIC  
+ 1 YEAR MANDATORY CO-OP

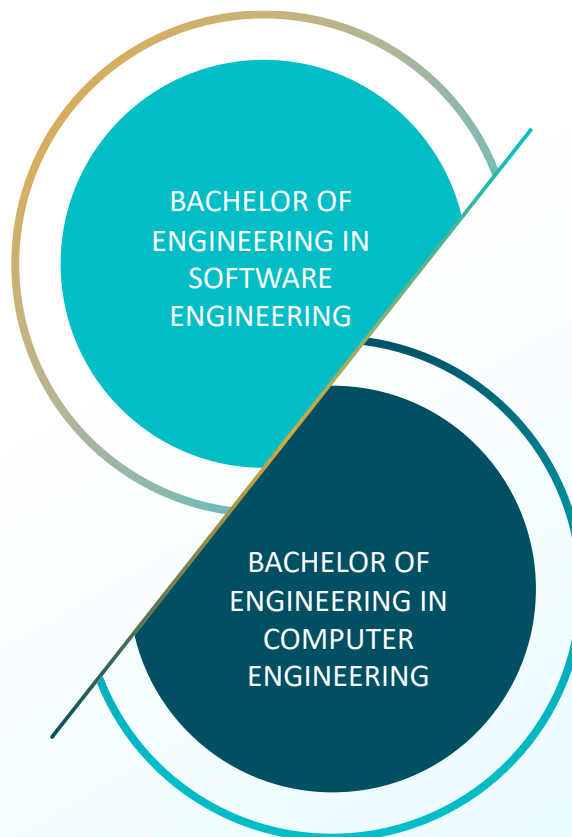
## Program Requirements

English 12, Pre-Calculus 12, Chemistry 12, ✓  
Physics 12 (all with min. 67% or equivalent)

IELTS 6.5 (no bands below 6.0) ✓

## Sample Jobs

Software Application Developer  
Software Design  
Database Management  
Network Management and Operations



## About the Program

Deals with designing hardware systems, software solutions, robotics or optimizing computer networks.

## Program Duration

4 YEARS ACADEMIC  
+ 1 YEAR MANDATORY CO-OP

## Program Requirements

✓ Pre-Calculus 12 (with min. 67% or equivalent)

✓ IELTS 6.5 (no bands below 6.0)

## Sample Jobs

Hardware design engineer  
Network engineer  
Autonomous system design engineer  
Robotics engineer

# SOFTWARE ENGINEERING VS COMPUTER SCIENCE

## About the Program

Deals with building and maintaining software systems, using systematic practices to ensure products are reliable and safe.

## Program Duration

4 YEARS ACADEMIC  
+ 1 YEAR MANDATORY CO-OP

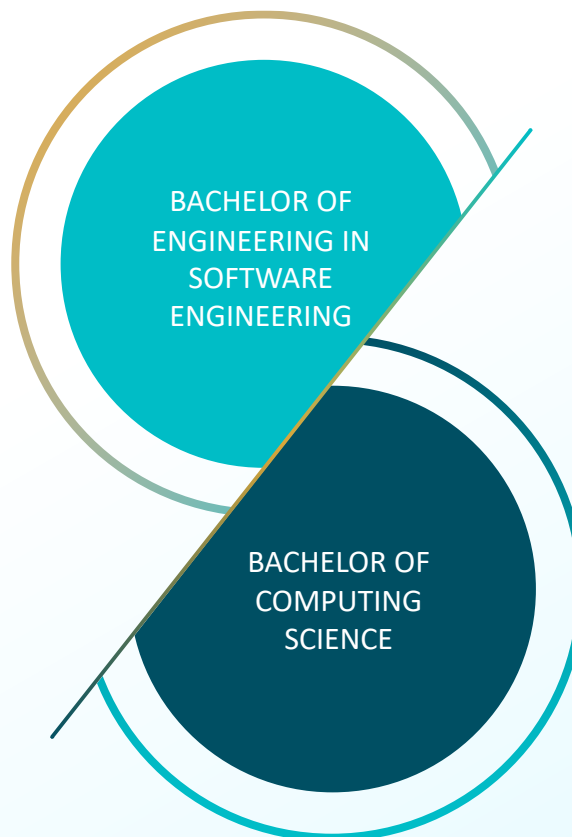
## Program Requirements

English 12, Pre-Calculus 12, Chemistry 12, ✓  
Physics 12 (all with min. 67% or equivalent)

IELTS 6.5 (no bands below 6.0) ✓

## Sample Jobs

Software Application Developer  
Software Design  
Database Management  
Network Management and Operations



## About the Program

Deals with software and hardware design, system architecture, operating system structure and modeling and simulation.

## Program Duration

4 YEARS

## Program Requirements

✓ Pre-Calculus 12 (with min. 67% or equivalent)

✓ IELTS 6.5 (no bands below 6.0)

## Sample Jobs

Web Design & Integration Developer  
Project Manager  
Mobile Application Developer



# BACHELOR OF EDUCATION SECONDARY (STEM)

Canada needs high school science and math teachers, with 83,438 openings in the next 10 years.

## Program Duration

5 Years

## Intakes

● July

## Admission Requirements

- ✓ Bachelor's degree (math, science or equivalent)
- ✓ 1 teachable major or 2 teachable minors
- ✓ 6 credits of English Literature and Composition
- ✓ 100 hours of relevant volunteer/work experience

## Sample Jobs

- High School Science Teacher
- Education Administrator



# EARLY CHILDHOOD EDUCATION DIPLOMA

Have a profound impact on a child's success and development. Nearly 12,000 ECEs will be needed in the next 10 years. (Government of British Columbia)

## Program Duration

2 Years

## Intakes

- September

## Admission Requirements

- ✓ Grade 12
- ✓ IELTS 6.5
- ✓ 25 hours of volunteer/work experience in a licensed childcare facility

## Sample Jobs

- Early Childhood Educator
- Early Literacy Specialist

## Program Laddering



Eligible to ladder into Bachelor of Education (Elementary) upon completion of ECE Diploma and ECE Specialization Certificates.





# WATER & WASTEWATER TECHNOLOGY DIPLOMA

TRU graduates have a 100% employment rate.  
3,320 new hires are needed in British Columbia.  
(BC Water & Wastewater Association)

## Program Duration

2 Years

## Intakes

● August

## Admission Requirements

- ✓ Grade 12
- ✓ IELTS 6.5
- ✓ Math 11 or equivalent
- ✓ Recommended: Chemistry 11 & Biology 11

## Sample Jobs

- Water Quality Technician
- Hazardous Materials Specialist



# POWER ENGINEERING TECHNOLOGY DIPLOMA

Become a certified power engineer and perform an essential role in society in two years.

You will learn the details of power engineering, maintenance and operation to work in industrial and commercial workplaces, including oil and gas, mining, pulp and paper, food processing, agriculture, hospitals, cities, power plants, manufacturing and more.

## Program Duration

2 Years

## Intakes

- September

## Admission Requirements

- ✓ Grade 12
- ✓ IELTS 6.5
- ✓ Math 12 or equivalent (67%)
- ✓ Recommended: Physics 11

## Sample Jobs

- Power Engineer
- Construction Millwright
- Industrial Mechanic
- Power Systems Operator





# MASTER OF NURSING

Canada needs healthcare professionals.  
142,000 full-year jobs by 2035 – an annual growth  
rate of 3.4%.

(The Conference Board of Canada)

## Program Duration

2 Years

## Intakes

- September

## Admission Requirements

- ✓ A bachelor degree
- ✓ Verification of registration as an active practicing nurse from the regulatory body of the jurisdiction where you live
- ✓ Min. GPA 3.0/4.0 in last 60 credits
- ✓ IELTS 7.0 (S 7.0, W 7.0, L 7.5, R 6.5)
- ✓ 2 reference letters, professional & academic

## Sample Jobs

- Research Nurse
- Nurse Educator





THE TRU EXPERIENCE



# RESEARCH AT TRU



Become involved in research as early as your first year

Work with faculty as a research assistant or apprentice

Over 300 students involved in undergraduate research

## UNDERGRADUATE RESEARCH EXPERIENCE AWARD PROGRAM (UREAP)

The Undergraduate Research Experience Award Program (UREAP) is a **\$6,000 scholarship** that can help you get started in your own original research. It is a great way to improve your resume, increase your academic and professional success and make your time in university more interesting and rewarding.

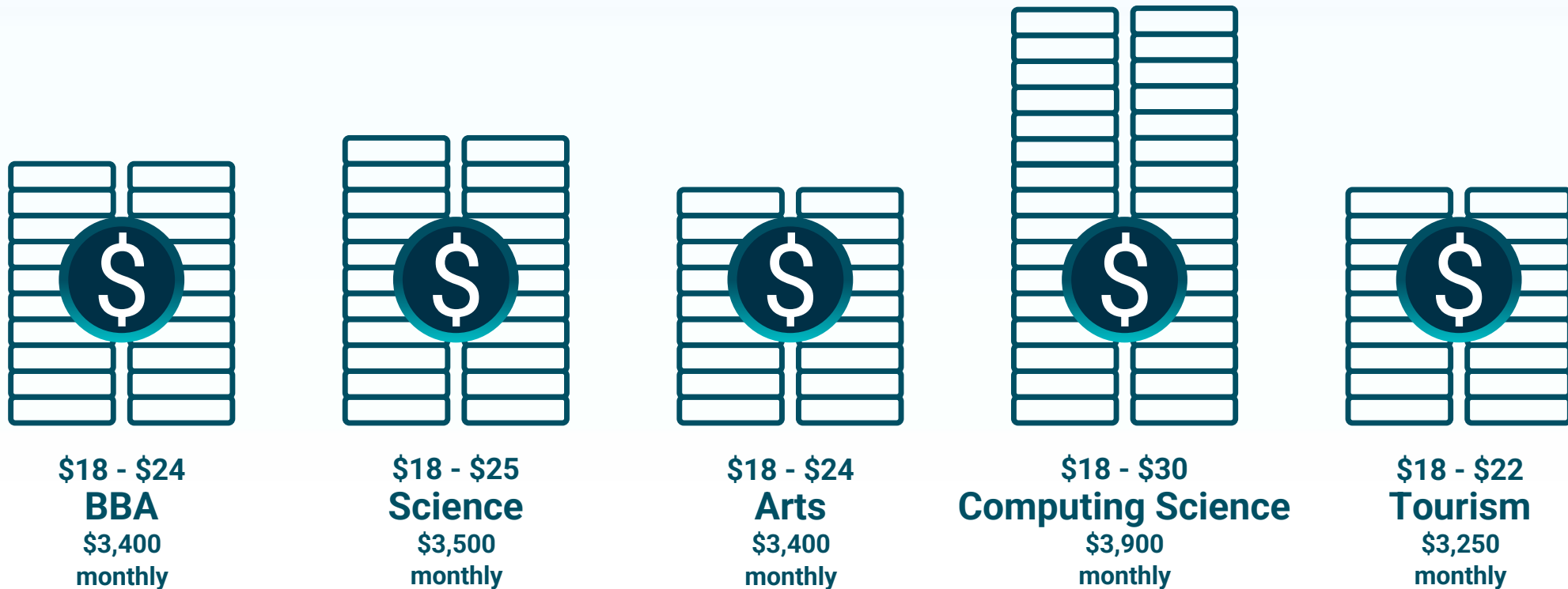
# EXPERIENTIAL LEARNING





# CO-OP EDUCATION

Over 500 employers in Canada hire TRU students for Co-op. Get paid for career-related work experience & maximize job opportunities upon graduation.




# CO-OP EDUCATION

Over 500 employers in Canada hire TRU students for co-op. Get paid for career-related work experience & maximize job opportunities upon graduation.



Sample Co-op Schedule (based on a 4-year degree)

	YEAR 1	YEAR 2	YEAR 3	YEAR 4	YEAR 5
SEPTEMBER TO DECEMBER	ACADEMIC SEMESTER 1	ACADEMIC SEMESTER 3	ACADEMIC SEMESTER 5	ACADEMIC SEMESTER 7	ACADEMIC SEMESTER 8
JANUARY TO APRIL	ACADEMIC SEMESTER 2	ACADEMIC SEMESTER 4	ACADEMIC SEMESTER 6	CO-OP WORK TERM 3	
MAY TO AUGUST		CO-OP WORK TERM 1	CO-OP WORK TERM 2	CO-OP WORK TERM 4	GRADUATION 



# WORK OPPORTUNITIES



## AS A STUDENT

On-campus and  
off-campus work  
part-time

## AFTER GRADUATION

Post-graduation  
work permit  
(PGWP)

## REMAINING IN CANADA

Provincial Nominee Program  
Canadian Experience Class  
(Express Entry)

## MINIMUM HOURLY WAGE IN BC

**\$16.75**

**WORK  
IN CANADA**  
for up to  
**3 YEARS**  
after graduation



CAMPUS LIFE









TRU

# STUDENT HOUSING



## **North Tower** On Campus

---

Enjoy one of the best views in the city at the 11-storey North Tower.



## **East Village** Off Campus

---

Have the independence of off-campus living, with the convenience of on-campus life at East Village.



## **McGill Residence** On Campus

---

The newly renovated McGill Residence has amenities that include laundry, games room, kitchen, and study room.



## **The Coyote Den** Off Campus

---

The Coyote Den at East Village offers private entrance and washroom with shower, toilet and sink.

# NORTH TOWER

 Bed Included


 Desk Included

 Microwave & Fridge Included

 High-speed internet

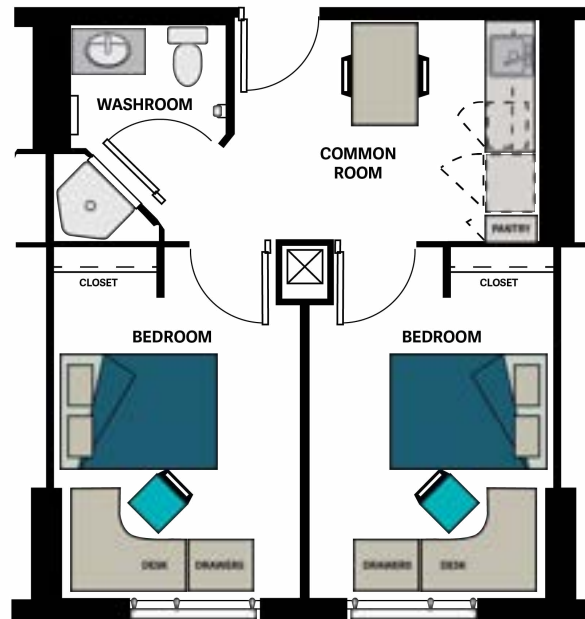
 24 Hour Fitness Area

 Storage and Laundry Facilities

 Electricity Included

 24 Hour Front Desk

 Common Kitchen



CDN  
\$8,670/  
8 months







TRU

# MCGILL RESIDENCE



Bed  
Included



Desk  
Included



Microwave &  
Fridge Included



Storage and  
Laundry Facilities



9 a.m. – 2 a.m.  
Front Desk



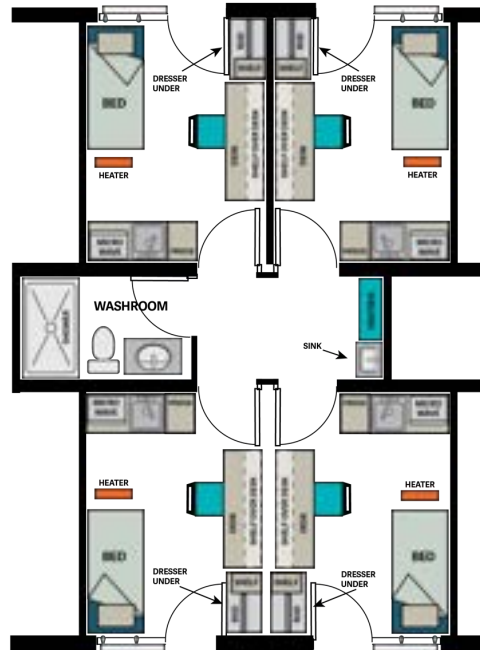
Electricity  
Included



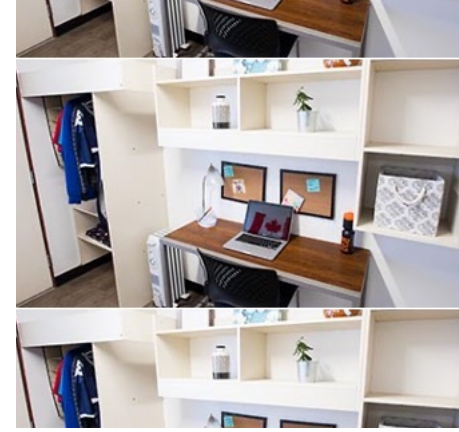
Secure  
Bike Storage



Private  
Kitchenette



CDN  
\$5,790/  
8 months




# EAST VILLAGE

 Bed Included

 Desk Included

 Microwave & Fridge Included

 8 a.m. – 8 p.m.  
Front Desk

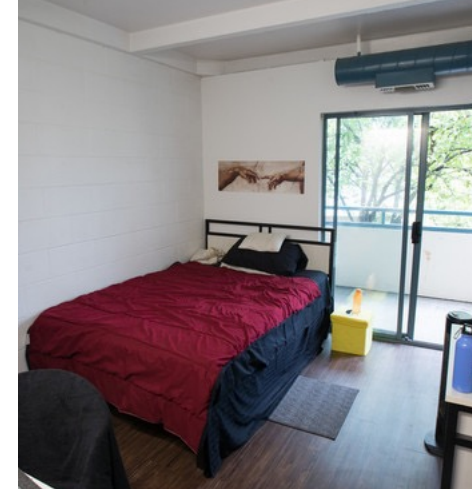
 Storage and Laundry Facilities

 Electricity Included

 Shared Kitchen



CDN  
\$6,160/  
8 months





# The Coyote Den at East Village



Bed  
Included



Desk  
Included



Microwave &  
Fridge Included



8 a.m. – 8 p.m.  
Front Desk



Storage and  
Laundry Facilities



Electricity  
Included



Private  
Kitchen



CDN  
\$9,710/  
8 months





TRU

# HOMESTAY



Bed  
Included



Desk  
Included



Meals  
Included



Storage and  
Laundry



Electricity  
Included

Managed by TRU World staff, TRU's homestay program is a great way to experience Canadian culture and practice English by living with local families or individuals.

CDN  
\$1,200/  
month







TRU

# FACILITIES & TRANSIT

Complete range of facilities and city bus service to and from campus.



CANADA GAMES  
AQUATIC CENTRE



INDOOR SPORTS  
FACILITIES



TOURNAMENT CAPITAL  
CENTRE



LIBRARY



24 X 7  
STUDY SPACES



STUDENT-OPERATED  
CAFETERIA



# AWARD-WINNING STUDENT SUPPORT

TRU has Canada's most comprehensive international student services and support team.



**INTERNATIONAL STUDENT SERVICES**  
INTERNATIONAL STUDENT ADVISORS (ISA)  
IMMIGRATION SPECIALISTS (RISIA & RCIC)



**INTERNATIONAL ADMISSIONS**



**INTERNATIONAL ACADEMIC ADVISING**





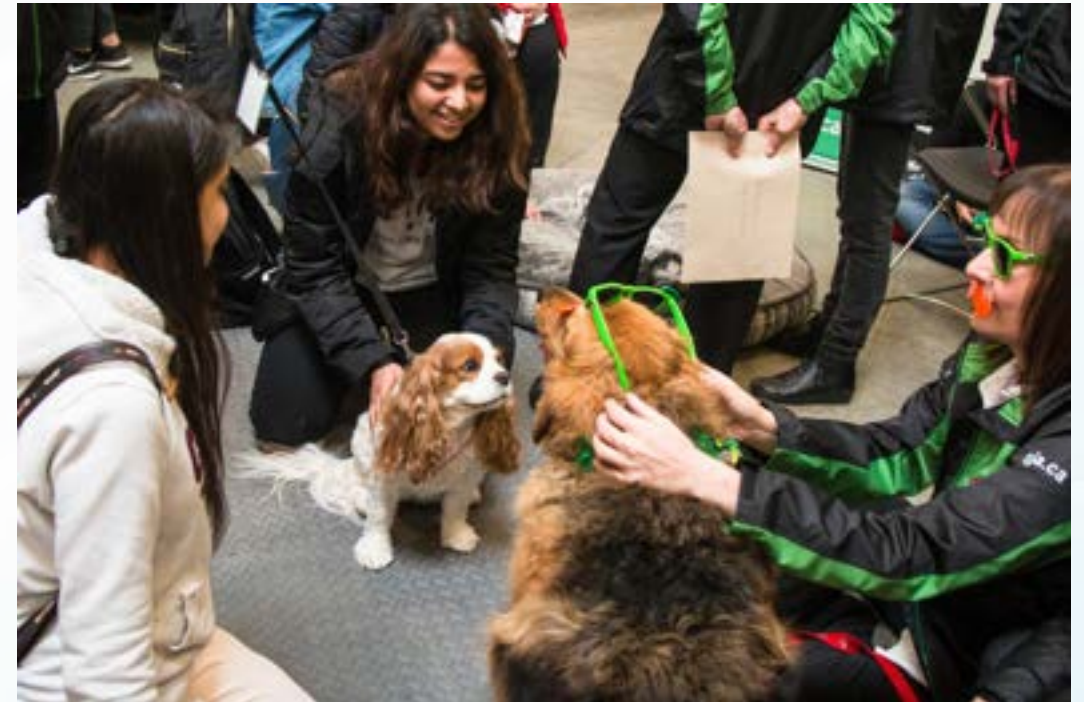
TRU

# OTHER SUPPORTS ON CAMPUS



## ACADEMIC SUPPORT

Math Help Centre, The Writing Centre, School of Business and Economics Help Centre, Supplemental Learning, Career Education Department and more



## LIFE AND WELLNESS SUPPORT

Therapy Dog Thursdays, Medical Clinic, Wellness Centre, Chaplaincy, Counselling, Cultural Events, Intercultural Awareness and more



BASKETBALL



RUGBY



SOCCER



BASEBALL



VOLLEYBALL



SWIMMING



CHEERLEADING



CURLING



Compete against top-level athletes



World-class training facilities



Learn more at [gotruwolfpack.ca](https://gotruwolfpack.ca)





TRU

# LEAP

LEISURE EXPLORATION ACTIVITY PROGRAM





A photograph of a crowd of people at what appears to be a protest or demonstration. In the foreground, a man with glasses and a black t-shirt is holding a large red flag. Behind him, many other flags are visible, including the Finnish flag (blue with a white cross), the Norwegian flag (red, white, and blue), and the Australian flag (blue with white stars). The scene is outdoors, and the flags are waving in the air. A teal-colored rounded rectangle is overlaid in the top right corner, containing the word "IDAYS" in white capital letters.

**IDAYS**





TRU

# OVER 80 CLUBS ON CAMPUS

TRU has over 80 clubs that students can choose to get involved with.



For a full list of clubs,  
visit [tru.ca/clubs](https://tru.ca/clubs)

## ACADEMIC

Adventure U Club

ARET Club

Biology Club

Chemistry Club

Economics Club

MBA Club

## COMMON INTEREST

Business Law Club

Game Development Club

Ski and Snowboarding Club

Cricket Club

Swing Dance Club

Writers Club

Criminal Law Club

Eco Club

Enactus Thompson Rivers Club

## ETHNIC

Bangladesh Club

Chinese Students & Scholars Club

Pakistani Students Association

Persian Students Association

SAASRC

Kamloops Gujarati Club



TRU

# STUDENT EMPLOYABILITY

With only 4.7%, BC has one the lowest unemployment rate in Canada.

95%

Satisfaction  
Rate

## BACHELOR'S DEGREE

93%

In Labour Force

\$60,000

Yearly Salary

## DIPLOMA STUDENTS

91%

In Labour Force

\$21

Hourly Wage

(BC Student Outcomes 2019 – 2021)







TRU

# WHERE STUDENTS GO AFTER GRADUATION



Graduates may choose to stay in Kamloops or move anywhere in Canada or abroad.



TRU

# SHORT-TERM PROGRAMS

Our intensive, short-term programs are strategically balanced to maximize learning opportunities while allowing participants enough time to gain an appreciation of Canadian culture.

## LANGUAGE AND CULTURE OPEN PROGRAMS

**3-4**

Weeks



Summer & winter

## LANGUAGE AND CULTURE TRANSITION PROGRAMS

**3**

Weeks



Summer

## GLOBAL CITIZEN AND INTERCULTURAL COMPETENCY

**3**

Weeks



Summer & winter

## PROFESSIONAL DEVELOPMENT FOR EDUCATORS

**Various Dates**

### All programs include

- ✓ Homestay accommodation (including meals)
- ✓ All recreational and cultural activities
- ✓ Kamloops Airport pick-up and drop-off
- ✓ TRU campus and city orientation
- ✓ Support from advisors and instructors
- ✓ Kamloops transit pass



# SCHOLARSHIPS



## INTERNATIONAL ATHLETIC SCHOLARSHIPS

Considered for students qualifying in one of TRU's varsity sports teams.



## ENGINEERING SCHOLARSHIPS

International students accepted and enrolled in TRU's 2-year engineering transfer program will be considered.



## DIVERSITY SCHOLARSHIP

TRU offers global diversity scholarships to new international students that demonstrate excellent academics and are from countries that are underrepresented on campus.



## SOCIAL MEDIA AMBASSADOR AWARDS

A limited number of awards are available for international and Canadian students interested in promoting TRU worldwide as a study destination, as a part of a dedicated ambassador team.



TRU

# SCHOLARSHIPS



## **SCHOLARSHIPS FOR PRESIDENTS OF THE BAHAMAS AND CARIBBEAN**

Students from the Bahamas entering an undergraduate program in the Faculty of Adventure, Culinary Arts and Tourism or the School of Business and Economics will automatically be considered to receive a \$7,500 CAD award. One student is selected each year.



## **JORGE CAMPOS AWARD FOR MEXICAN STUDENTS**

This scholarship is open only to Mexican citizens currently enrolled in a full-time program of studies in Mexico.



## **SCHOLARSHIPS FOR AMERICAN STUDENTS**

US citizens admitted to a TRU undergraduate program of two years or longer are eligible for an automatic scholarship of \$2,000 CAD per student.





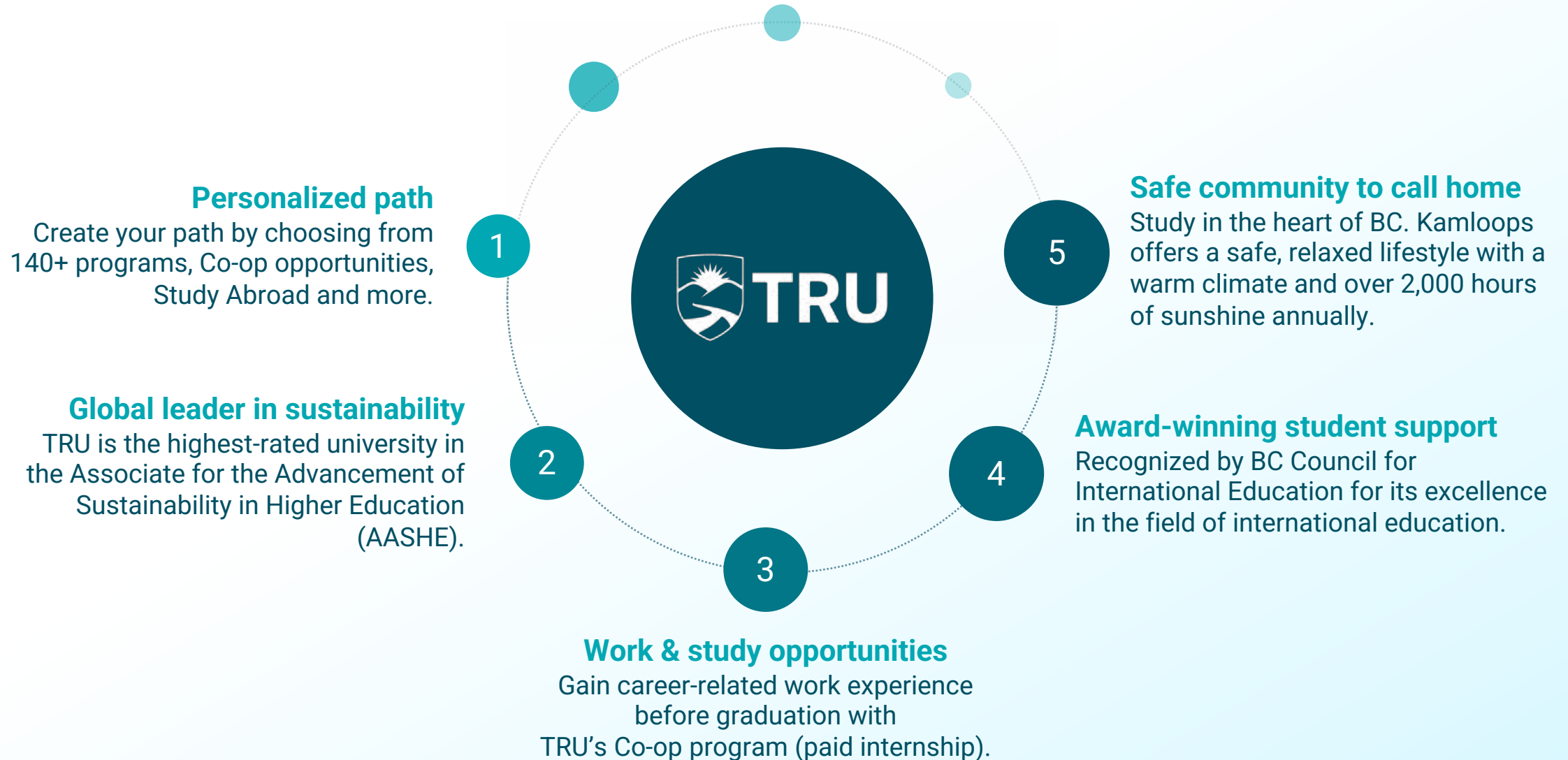
TRU

# ENGLISH LANGUAGE REQUIREMENTS

Direct Entry 5 Academic Courses	6.5+ IELTS	88+ TOEFL iBT	570+ TOEFL Paper-Based	125+ DUOLINGO	70+ CAEL	81+ MELAB
EAP LEVEL 5 2 EAP + 3 Academic	6.0+ IELTS	80+ TOEFL iBT	550 - 569 TOEFL Paper-Based	115+ DUOLINGO	60+ CAEL	77+ MELAB
EAP LEVEL 4 4 EAP + 1 Academic	5.5+ IELTS	71+ TOEFL iBT	530 - 549 TOEFL Paper-Based	100+ DUOLINGO	50+ CAEL	74+ MELAB
EAP LEVEL 3 5 EAP Courses	5.0+ IELTS	61+ TOEFL iBT	500 - 529 TOEFL Paper-Based	90+ DUOLINGO	40+ CAEL	69+ MELAB
EAP LEVEL 2 5 EAP Courses	EPT	EPT				
EAP LEVEL 1 5 EAP Courses	EPT	EPT				

TRU also accepts CanTEST, Cambridge ESOL and Pearson Test of English (PTE).

# 5 GREAT REASONS TO STUDY AT TRU







TRU

# Undergraduate Program Tuition Fees

## ENGLISH FOR ACADEMIC PURPOSES

**\$7,722**

Per semester for up to 12 credits/4 courses

**\$9,402**

Per semester for up to 15 credits/5 courses

## UNDERGRADUATE TUITION (U-PREP/ACADEMIC)

**\$8,439**

Per semester for up to 12 credits/4 courses

**\$10,271**

Per semester for up to 15 credits/5 courses  
Each additional credit: \$572 (fall/winter), \$658 (summer)

## POST BACCALAUREATE DIPLOMAS

**\$8,440**

Per semester for up to 12 credits/4 courses

**\$2,110**

Per course (\$658/credit)





TRU

# Graduate Program Tuition Fees

**GRADUATE CERTIFICATE IN  
EDUCATIONAL STUDIES  
(GCES) (Pre-MED)**

**\$9,087**

Per semester  
Minimum 9 credits required for  
completion

**MASTER OF BUSINESS  
ADMINISTRATION (MBA)**

**\$51,381**

Full tuition

**MASTER OF EDUCATION  
(MED)**

**\$30,290**

For 3 semesters  
4<sup>th</sup> semester may be needed for  
project or thesis options

**MASTER OF SCIENCE IN DATA  
SCIENCE  
(MScDS)**

**\$41,155**

Full tuition

**MASTER OF ENVIRONMENTAL  
SCIENCE  
(MScES)**

**\$40,388**

Full tuition

**MASTER OF ENVIRONMENTAL  
ECONOMICS AND  
MANAGEMENT (MEEM)**

**\$54,909**

Full tuition







TRU

# Graduate Program Tuition Fees

## MASTER OF NURSING

**\$36,046**

Full tuition

## MASTER OF ARTS IN HUMAN RIGHTS AND SOCIAL JUSTICE (MAHRSJ)

**\$30,390**

Full tuition

## MASTER OF ENVIRONMENTAL ECONOMICS AND MANAGEMENT (MScEEM)

**\$54,454**

Full tuition

# HOW TO APPLY



1



## Choose your program and start date

Make your program choice and check the admission requirements

2



## Apply

Apply online at [tru.ca/apply](https://tru.ca/apply)  
Non-refundable fee: \$100 CAD

3



## Application processing

4 - 6 weeks for graduate programs  
5 to 10 days for open programs





gistrar

FOLLOW US ON  
★ INSTAGRAM ★  
@TRUWORLD  
#MYTRU



JOIN OUR **VIBRANT**  
SOCIAL MEDIA COMMUNITY