

# CELT

## Service and Program Guide Fall 2019

### New Faculty Orientation

August 19 & 20 • 8:30 a.m.–4 p.m.  
Carolyn Ives, Nina Johnson  
OL127



Discover key information and make critical contacts to enable you to fulfill your instructional role. A series of expert-led sessions and stations will equip you with a repertoire of resources, supports, and services related to teaching, learning, and student success. Topics include teaching essentials, TRU culture and strategic priorities, and work/life aides for you and your students.

This August launch will be coupled with monthly sessions September to April on academic integrity, Indigenization, interculturalization, educational technology, open education resources, and others.

Visit our calendar at [www.tru.ca/celt](http://www.tru.ca/celt) for details as they become available.

### Collaborative Learning Techniques

August 27, September 10 & 24 • 12–1 p.m. • Carolyn Ives  
OL344



Have you been wondering how to make the most of small group activities in your courses? Based on the 2014 book *Collaborative Learning Techniques: A handbook for college faculty* by Barkley, Major, and Cross, this three-session series will offer you the opportunity to explore strategies to help you promote positive group learning experiences and foster a collaborative classroom environment. Over the course of the workshop, you'll learn about several collaborative learning

techniques, try some in your classes, and report back to the group about the results. You will also receive a copy of the book to continue on in your assessment journey after the workshop is over.

### YOU GOT THIS!

#### Create an Inspired First Day of Class

August 28 • 9 a.m.–12 p.m.  
Carolyn Ives, Nina Johnson  
OL127



If you're looking toward teaching your first class and want to inspire your students right from day one, this workshop is for you. This session will ensure you have the tools to engage and excite your students about learning and about your course material right from the minute they first enter your class.

### Teaching Assistants Orientation (TA Day)

September 3 • 4–7 p.m.  
Carolyn Ives, Nina Johnson, Kara Loy  
HOL269



Join colleagues for a carefully curated day of need-to-know and good-to-know information. We'll get you connected with details on payroll and human resources, the professional code of conduct, and intercultural competencies to help you meet the needs of TRU's diverse student body. Most of all, you'll gain confidence and composure to fulfill your role through discussing real-life TA scenarios with peers and a faculty guide.

### A Book, a Bowl, and a Bun Faculty Book Club

Thursdays, September 19, October 17 & November 21 • 12–1 p.m.  
Catharine Dishke, Carolyn Ives  
ESTR'S Market



Come join us at ESTR's Market for lunch and a facilitated discussion about the 2017 book *Bandwidth Recovery: Helping students reclaim cognitive resources lost to poverty, racism and social marginalization* by Cia Verschelden. We'll supply the bowl of soup, the bun, and you supply the discussion. Digital user editions, and a limited number of print copies are available through the uTRU Library. Note, space is limited, so please register by September 3.

--"*Bandwidth Recovery* is a timely, essential, and uplifting read for faculty and other contributors to student learning, assisting them in drawing out those students' potential for success."

-- Peggy L. Maki, educational consultant

### Mini NFO (New Faculty Orientation)

September 12 • 11:30 a.m.–1:30 p.m.  
Carolyn Ives, Nina Johnson, Kara Loy  
OL344



This session is for any new faculty who were unable to attend the full orientation in August.

#### Icon Legend

- TEACHING PRACTICES
- CURRICULUM
- CAREER DEVELOPMENT
- STUDENT SUCCESS
- COMMUNITIES OF PRACTICE
- EDUCATIONAL TECHNOLOGY
- LIVE FEED/ ONLINE

## Teaching Triangles Program

**Planning Meeting:**  
September 23 • 11 a.m.–12 p.m.  
OL127

**Wrap-Up Meeting:**  
December 9 • 12–1 p.m.  
TBD

Carolyn Ives  


The Teaching Triangles program provides faculty with the opportunity to gain insight into their teaching and their students' learning through a non-evaluative, formative process of reciprocal classroom visits and self-reflection. Three faculty members coordinate visits to each others' classes once over the term, committing to visiting one hour of class for each colleague in the triangle. Groups then meet over a complimentary lunch at Culinary Arts to discuss what they learned about their own practice through their observations and reflections.

Note: to enroll, you must attend the planning meeting. If you have a teaching conflict that makes it impossible for you to attend, please email us and we will arrange an alternative date. Since groups are fixed at the beginning of the term, enrollment is limited to those who register before the planning meeting.

## Small Course Design

October 8 • 2–3 p.m.  
Carolyn Ives, Paul Martin  
OL344



Large-scale course (re)design can be daunting. While faculty sometimes can dedicate much time to course revision, often course changes have to be completed quickly. How can you make the kinds of changes in your courses that don't substantially increase your workload but still support student learning? Based on the concept outlined in James Lang's 2014 book *Small Teaching*, small course design can help you make incremental changes to your courses that are both practical and impactful. This workshop will share and model evidence-based incremental course revision strategies that you can use to support student learning.

**REGISTER**  
[tru.ca/celt](http://tru.ca/celt)

## Instructional Skills Workshop

October 19 & 20, 26 & 27  
9 a.m.– 4:30 p.m.  
Carolyn Ives, Paul Martin  
OM1761

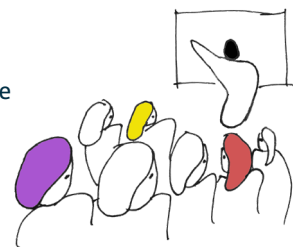


The Instructional Skills Workshop (ISW) is a professional development program designed for faculty members who are interested in developing and enhancing their instructional skills. ISW caters to individuals new to teaching as well as to those who wish to refresh and enhance their skills. Participants will benefit from practicing skills and sharing ideas in a cooperative environment. The workshop consists of teaching practice, theory application, and topical sessions specifically relevant to each instructor's context. During the workshop you will teach short lessons and receive feedback. You will work closely with peers and trained facilitators. Through a supportive atmosphere you will have opportunities to develop new teaching skills, to enhance existing skills, and/or to try new and challenging ideas!

## CELTALKS

**Make the most out of your lunch hour** by joining colleagues for professional learning opportunities. These sessions are intended to foster campus-wide collaboration, communication and resource sharing about new and emerging areas related to teaching and learning. Each talk features one or two lively presentations from faculty and staff across the disciplines on topics relevant to teaching practice. Bring your lunch and your curiosity, and we'll provide the coffee, tea and dessert!

Visit [www.tru.ca/celt](http://www.tru.ca/celt) for details as they become available.



## EDUCATIONAL TECHNOLOGY

In addition to regularly scheduled drop-ins, we offer a variety of training opportunities to faculty in order to help them use Moodle and other tools to support student learning. These interactive workshops are held regularly and maintain limited enrolment to provide personalized learning. As workshops fill, more will be added.

Jamie Drozda • Dr. Matthew Stranach • Dr. Brenna Clarke Gray

Visit <https://trubox.ca/workshops/> for workshop topics, dates, and details.

### DROP INS

Tuesdays, Wednesdays & Thursdays  
September to December  
9–11 a.m. and 1–3 p.m.  
OL346

\*some exceptions,  
please check the calendar

# ADVENTURES IN TEACHING

**Adventures in Teaching** is a CELT-produced and hosted podcast that delivers stories of creativity, relationships, excitement and suspense from the field of teaching, learning, educational scholarship and academic leadership.

Visit <https://www.tru.ca/celt/podcasts.html>



## COMMUNITIES OF PRACTICE (CoP)

### Scholarship of Teaching and Learning (SoTL)

First Friday of each month, September to December • 1–2 p.m.

Carolyn Ives • OL344



The SoTL CoP is comprised of faculty who are actively working on a project related to the scholarship of teaching and learning. This group meets to discuss research, share project ideas, communicate about the scholarly literature, and learn about modes of knowledge mobilization. Faculty who hold a CELT SoTL Accelerator Award are especially encouraged to attend.

### Show up and Write!

Fridays (starting September 13)  
10 a.m.–12 p.m.

Catharine Dishke • OL340



Show up and Write! Based on the successful “Shut Up & Write” community movement, this weekly writing group provides a quiet space to join with faculty and staff at TRU to make time to write. Each session will begin with a quick check-in, and close with a wrap-up/ debrief. The rest of the time will be spent working on your own writing project and goals. CELT staff will be present to keep sessions on track and offer encouragement.

### New Faculty Information Sessions

Thursday, September 19  
Wednesday, October 16  
Thursday, November 21  
Wednesday, December 11  
3–5 p.m.  
Various topics, guests and locations.



These monthly sessions from September to April will alternate between Wednesdays and Thursdays from 3–5 p.m.. While we cannot offer childcare, you are welcome to bring your children (and activities to keep them occupied) for these two-hour sessions.

### Learning Technology

Fridays, September 20, October 25 & November 29 • 1:30–2:30 p.m.  
Matthew Stranach • OL344



Come meet to discuss your learning technology project! Share experiences and insights with like-minded faculty and staff. Plan your project or discover ideas for a project.

### Sustainability across the Curriculum

Fridays, September 20, October 18, November 22 & December 13 • 1–2 p.m.  
Carolyn Ives • OL340



This CoP welcomes faculty members who are committed to advancing sustainability issues within their courses—and within higher education and our community more broadly. The meeting times have been set for the term, but the group’s participants will decide what we want to do and how we’ll do it. We may discuss readings, share our course innovations around sustainability issues, give informal presentations, consider various definitions of sustainability, or go on field trips together. Who knows? Join us and see what happens!

### Focus on First Year

Project Coordinator, Nancy Carson



The Focus on First Year Faculty Learning Communities (FLCs) bring together instructors who teach first-year courses as well as those who have an interest in first-year student retention and success. FLCs will work on collaborative projects to experiment with and reflect on evidence-informed practices with the goal of increasing students’ sense of belonging and achievement. These FLCs are open to all faculty.

### K-16 Mind The Gap

Project Coordinator, Susan Lidster



CELT and School District 73 are working together to foster pedagogical and curricular connections between teachers and faculty. This CoP is designed to support faculty who hold K-16 Grants, or would like to develop a partnership with the regional school district. Our goals are to increase knowledge transfer between secondary school teachers and university faculty members with respect to curricula and pedagogical practices in each sector, ease transitions for students between grade 12 and 1st year university, and improve retention into 2nd year, spread awareness and practice of research-based assessment strategies common to both secondary teachers and university faculty members, while showcasing instructional practices that use these assessment strategies.

Visit <https://www.tru.ca/celt/faculty-learning/k-16-mind-the-gap.html> for more details.

**REGISTER**  
[tru.ca/celt](https://www.tru.ca/celt)

The Centre for Excellence in Learning and Teaching promotes teaching excellence for all TRU faculty members. The centre supports faculty in their work to develop innovative and engaging pedagogies and programs across the university communities to improve student learning, recruitment, transition, and retention.

### Professional Learning and Development

CELT offers a variety of workshops and courses to faculty to enhance teaching and learning across the university. These include our popular CELTalks series, new faculty orientation, and regularly-scheduled educational technology and instructional skills support opportunities.

### Scholarship of Teaching and Learning (SoTL)

CELT supports and encourages faculty seeking to develop scholarly inquiry of SoTL projects. We are pleased to consult with you about research ideas, methodologies, result interpretation and dissemination. Small seed grants are available to faculty requiring financial support.

### Awards and Fellowships

Are you a great teacher, or do you know someone who deserves recognition? From disciplinary teaching awards to national or international competitions, our team will work closely with you to help assemble a compelling and noteworthy portfolio or nomination package.

### Consulting and Mentorship

The teaching and learning coordinators at CELT use an appreciative inquiry model that focuses on using strengths and goals to support the development of a successful discipline-specific teaching practice for all faculty, programs, and departments. Our Teaching Fellows also offer customized program learning outcome and curriculum mapping workshops for programs and departments.

---

## THE CELTEAM

---

#### CELT Staff

**Dr. Catharine Dishke**  
Director

**Kara Loy**  
Associate Director

**Nina Johnson**  
Coordinator, Teaching and Learning

**Carolyn Ives**  
Coordinator, Learning and Faculty Development

#### Project Coordinators

**Dr. Susan Lidster**  
K-16 Mind the Gap

**Nancy Carson**  
Focus on First Year

#### 2019/2020 Teaching Fellows:

Nina Johnson  
Dr. Blair McDonald  
Dr. Karen Densky  
Dr. Bala Nikku

#### Educational Technology:

Jamie Drozda  
Dr. Matthew Stranach  
Dr. Brenna Clarke Gray

#### Office Coordinator:

Teresa Dickmeyer



OL349 • t: 250-828-5272 • e: [celt@tru.ca](mailto:celt@tru.ca) • w: [tru.ca/celt](http://tru.ca/celt)

 CELT at TRU •  @TRU\_CELT •  @CELT\_TRU



**THOMPSON  
RIVERS  
UNIVERSITY**

Centre for  
Excellence in  
Learning & Teaching

**[tru.ca/celt](http://tru.ca/celt)**