

# 2022 **Secwépemc** Calendar





TRU Indigenous Education

Stop signs on TRU's Kamloops campus include both Secwepemctsin and English.

December 2021  
S M T W T F S  
1 2 3 4  
5 6 7 8 9 10 11  
12 13 14 15 16 17 18  
19 20 21 22 23 24 25  
26 27 28 29 30 31

# Pellkwełmín - January

STAY AT HOME MONTH

February  
S M T W T F S  
1 2 3 4 5  
6 7 8 9 10 11 12  
13 14 15 16 17 18 19  
20 21 22 23 24 25 26  
27 28

Xetspesqt Sunday	Nekwesqt Monday	Selesqt Tuesday	Kellesqt Wednesday	Mesesqt Thursday	Tselksteqt Friday	Teqmekstesqt Saturday
						1  New Year's Day
● 2	3	4	5	6	7	8
◐ 9	10	11	12	13	14	15
16 ◐	17	18	19	20	21	22
23	24 ◐	25 ●	26	27	28	29
30	31					



Thompson Rivers University campuses are on the traditional lands of the Tk'emlúps te Secwépemc (Kamloops campus) and the Texelc (Williams Lake campus) within Secwepemcúlcw, the traditional and unceded territory of the Secwépemc. The region TRU serves also extends into the territories of the St'át'imc, Nlaka'pamux, Nuxalk, Tsilhqot'in, Dakelh, and Syilx peoples.

2022



TRU Indigenous Education

The roof line of the Old Main building on the Kamloops campus is designed in the shape of Mt. Peter and Mt. Paul.

January  
S M T W T F S  
1  
2 3 4 5 6 7 8  
9 10 11 12 13 14 15  
16 17 18 19 20 21 22  
23 24 25 26 27 28 29  
30 31

# Pellctsiꓵweñten - February

CACHE PIT OR CELLAR PIT MONTH

March  
S M T W T F S  
1 2 3 4 5  
6 7 8 9 10 11 12  
13 14 15 16 17 18 19  
20 21 22 23 24 25 26  
27 28 29 30 31

Xetspesqt Sunday	Nekwesqt Monday	Selesqt Tuesday	Kellesqt Wednesday	Mesesqt Thursday	Tselksteqt Friday	Teqmekstesqt Saturday
		● 1	2 Groundhog Day	3	4	5
6	7 ● 8	8	9	10 National Moosehide Campaign	11	12
13	14 Valentine's Day	15	16 ○ 16	17	18	19
20	21 TRU Reading Break	22 ● 22	23 Pink Shirt - Anti-Bullying Day	24	25 →	26
27	28 TRU Indigenous Awareness Week				→	



Thompson Rivers University campuses are on the traditional lands of the Tk'emlúps te Secwépemc (Kamloops campus) and the Texelc (Williams Lake campus) within Secwepemcúlcw, the traditional and unceded territory of the Secwépemc. The region TRU serves also extends into the territories of the St'át'imc, Nlaka'pamux, Nuxalk, Tsilhqot'in, Dakelh, and Syilx peoples.

2022





TRU Indigenous Education

Drums, 2nd floor of the Brown Family House of Learning. Drums are made from animal hides and used in ceremony and celebrations. The white, red, black and yellow represent the four colours of humankind working together to protect and care for the earth. The feathers help move the air and carry our prayers to the Creator and offer protection.

February  
S M T W T F S  
1 2 3 4 5  
6 7 8 9 10 11 12  
13 14 15 16 17 18 19  
20 21 22 23 24 25 26  
27 28

# Pellsqépts - March

SPRING WINDS

April  
S M T W T F S  
1 2  
3 4 5 6 7 8 9  
10 11 12 13 14 15 16  
17 18 19 20 21 22 23  
24 25 26 27 28 29 30

Xetspesqt Sunday	Nekwesqt Monday	Selesqt Tuesday	Kellesqt Wednesday	Mesesqt Thursday	Tselksteqt Friday	Teqmekstesqt Saturday
		1 ●  TRU Indigenous Awareness Week	2	3	4	5
6	7	8	9 ●	10	11	12
13  Daylight Savings Begins @ 2am	14	15	16	17 ○	18	19
20  First Day of Spring	21	22  World Water Day	23	24 ●	25	26
27	28	29	30	31  National Indigenous Languages Day		



TRU Indigenous Education

"Weytk" (I see you) Secwépemc greeting welcomes visitors to all buildings on TRU's Kamloops campus.

March  
S M T W T F S  
1 2 3 4 5  
6 7 8 9 10 11 12  
13 14 15 16 17 18 19  
20 21 22 23 24 25 26  
27 28 29 30 31

# Pesl7éwten - April

MELTING MONTH

May  
S M T W T F S  
1 2 3 4 5 6 7  
8 9 10 11 12 13 14  
15 16 17 18 19 20 21  
22 23 24 25 26 27 28  
29 30 31

Xetspesqt Sunday	Nekwesqt Monday	Selesqt Tuesday	Kellesqt Wednesday	Mesesqt Thursday	Tselksteqt Friday	Teqmekstesqt Saturday
					● 1  April Fool's Day	2
3	4	5	6	7	8	● 9
10	11	12	13	14	15	○ 16
17	18	19	20	21	22	● 23
24	25	26	27	28	Earth Day 29	● 30



Thompson Rivers University campuses are on the traditional lands of the Tk'emlúps te Secwépemc (Kamloops campus) and the Texelc (Williams Lake campus) within Secwepemcúluw, the traditional and unceded territory of the Secwépemc. The region TRU serves also extends into the territories of the St'át'imc, Nlaka'pamux, Nuxalk, Tsilhqot'in, Dakelh, and Syilx peoples.

2022



TRU Indigenous Education

Sekláp (Coyote-Creator, Trickster, Teacher) on top of the Brown Family House of Learning faces east (representing new beginnings) towards Mt. Paul. His front left paw is outstretched to offer support to everyone on campus on their educational journey.

April  
S M T W T F S  
1 2  
3 4 5 6 7 8 9  
10 11 12 13 14 15 16  
17 18 19 20 21 22 23  
24 25 26 27 28 29 30

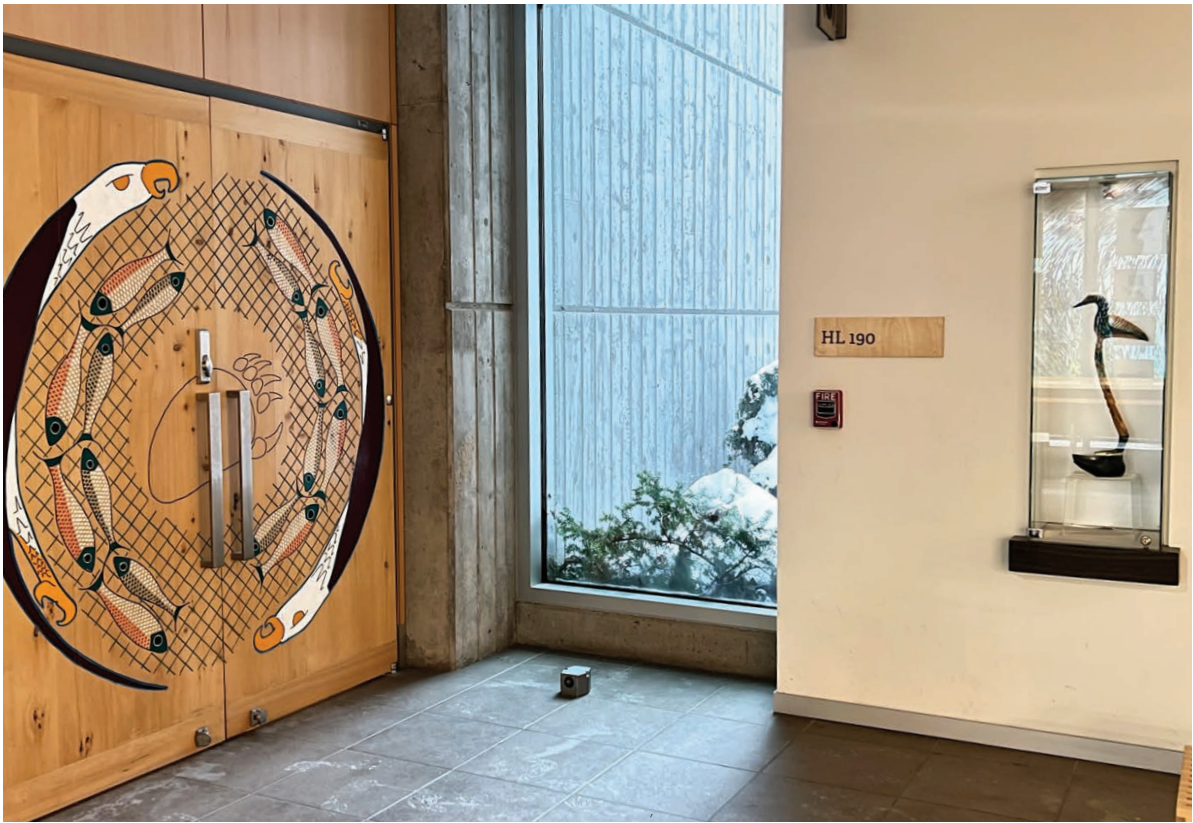
# Pell7é7llqten - May

DIGGING ROOTS MONTH

June  
S M T W T F S  
1 2 3 4  
5 6 7 8 9 10 11  
12 13 14 15 16 17 18  
19 20 21 22 23 24 25  
26 27 28 29 30

Xetspesqt Sunday	Nekwesqt Monday	Selesqt Tuesday	Kellesqt Wednesday	Mesesqt Thursday	Tselksteqt Friday	Teqmekstesqt Saturday
1	2	3	4	5 National Awareness Day of MMIWG and 2SLGBTQQIA plus peoples	6	7
8 Mother's Day	9	10	11	12	13	14
15	16	17	18	19	20	21
22	23	24	25	26	27	28
29	30	31				





TRU Indigenous Education

Traditional carved doors by St'at'imc artist Saul Terry at the entrance to the pit house-style conference room in the Brown Family House of Learning feature eagles that are sacred to Secwépemc people and salmon that are an important food source.

May  
S M T W T F S  
1 2 3 4 5 6 7  
8 9 10 11 12 13 14  
15 16 17 18 19 20 21  
22 23 24 25 26 27 28  
29 30 31

# Pelltspántsk - June

MID-SUMMER MONTH

July  
S M T W T F S  
1 2  
3 4 5 6 7 8 9  
10 11 12 13 14 15 16  
17 18 19 20 21 22 23  
24 25 26 27 28 29 30  
31

Xetspesqt Sunday	Nekwesqt Monday	Selesqt Tuesday	Kellesqt Wednesday	Mesesqt Thursday	Tselksteqt Friday	Teqmekstesqt Saturday
			1  National Indigenous History Month	2	3	4
5	6	7	8	9	10	11
12	13	14	15	16	17	18
19  Father's Day	20	21  National Indigenous Peoples Day & Summer Solstice  First Day of Summer	22	23	24	25
26	27	28	29	30		



Thompson Rivers University campuses are on the traditional lands of the Tk'emlúps te Secwépemc (Kamloops campus) and the Texelc (Williams Lake campus) within Secwepemcúlcw, the traditional and unceded territory of the Secwépemc. The region TRU serves also extends into the territories of the St'at'imc, Nlaka'pamux, Nuxalk, Tsilhqot'in, Dakelh, and Syilx peoples.

2022



TRU Indigenous Education

Secwépemc Territory Markers represent important places, historical events, and also act as boundaries/guides. The Secwépemc Territorial Marker located in Old Main at the Faculty of Law entrance honours Secwépemc people and the traditional lands on which TRU resides. Created by Secwépemc artists Rod & Ron Tomma, Mike Peters, and Ed Jensen.

June  
S M T W T F S  
1 2 3 4  
5 6 7 8 9 10 11  
12 13 14 15 16 17 18  
19 20 21 22 23 24 25  
26 27 28 29 30

# Pelltqwelq́wélt - July

GETTING RIPE MONTH

August  
S M T W T F S  
1 2 3 4 5 6  
7 8 9 10 11 12 13  
14 15 16 17 18 19 20  
21 22 23 24 25 26 27  
28 29 30 31

Xetspesqt Sunday	Nekwesqt Monday	Selesqt Tuesday	Kellesqt Wednesday	Mesesqt Thursday	Tselksteqt Friday	Teqmekstesqt Saturday
					1  Canada Day	2
3	4	5	6	7	8	9
10	11	12	13	14	15	16
17	18	19	20	21	22	23
24	25	26	27	28	29	30
31						



Thompson Rivers University campuses are on the traditional lands of the Tk'emlúps te Secwépemc (Kamloops campus) and the Texelc (Williams Lake campus) within Secwépemcúlcw, the traditional and unceded territory of the Secwépemc. The region TRU serves also extends into the territories of the Stát'imc, Nlaka'pamux, Nuxalk, Tsilhqot'in, Dakelh, and Syilx peoples.

2022





TRU Indigenous Education

Traditional Interior Salish pine needle, cedar root, birch bark baskets and rattles that have everyday/ceremonial uses are displayed in the Brown Family House of Learning.

July  
S M T W T F S  
1 2  
3 4 5 6 7 8 9  
10 11 12 13 14 15 16  
17 18 19 20 21 22 23  
24 25 26 27 28 29 30  
31

# Pesqelqlél'ten - August

MANY SALMON MONTH

September  
S M T W T F S  
1 2 3  
4 5 6 7 8 9 10  
11 12 13 14 15 16 17  
18 19 20 21 22 23 24  
25 26 27 28 29 30

Xetspesqt Sunday	Nekwesqt Monday	Selesqt Tuesday	Kellesqt Wednesday	Mesesqt Thursday	Tselkstegt Friday	Teqmekstesqt Saturday
	1	2	3	4	5	6
7	8	9 International Indigenous Peoples Day	10	11	12	13
14	15	16	17	18	19	20
21	22	23	24	25	26	27
28	29	30	31			



Thompson Rivers University campuses are on the traditional lands of the Tk'emlúps te Secwépemc (Kamloops campus) and the Texelc (Williams Lake campus) within Secwépemcúlcw, the traditional and unceded territory of the Secwépemc. The region TRU serves also extends into the territories of the Stát'imc, Nlaka'pamux, Nuxalk, Tsilhqot'in, Dakelh, and Syilx peoples.

2022



TRU Indigenous Education

The hills in front of Campus Activity Center (CAC) were designed to honour our hosts Tk'emlúps te Secwépemc with the hills representing Mt. Peter and Mt. Paul, and the two walkways that meet in the center representing the confluence of the North and South Thompson rivers.

August  
S M T W T F S  
1 2 3 4 5 6  
7 8 9 10 11 12 13  
14 15 16 17 18 19 20  
21 22 23 24 25 26 27  
28 29 30 31

# Pelltemllík - September

SPAWNED OUT SALMON

October  
S M T W T F S  
1  
2 3 4 5 6 7 8  
9 10 11 12 13 14 15  
16 17 18 19 20 21 22  
23 24 25 26 27 28 29  
30 31

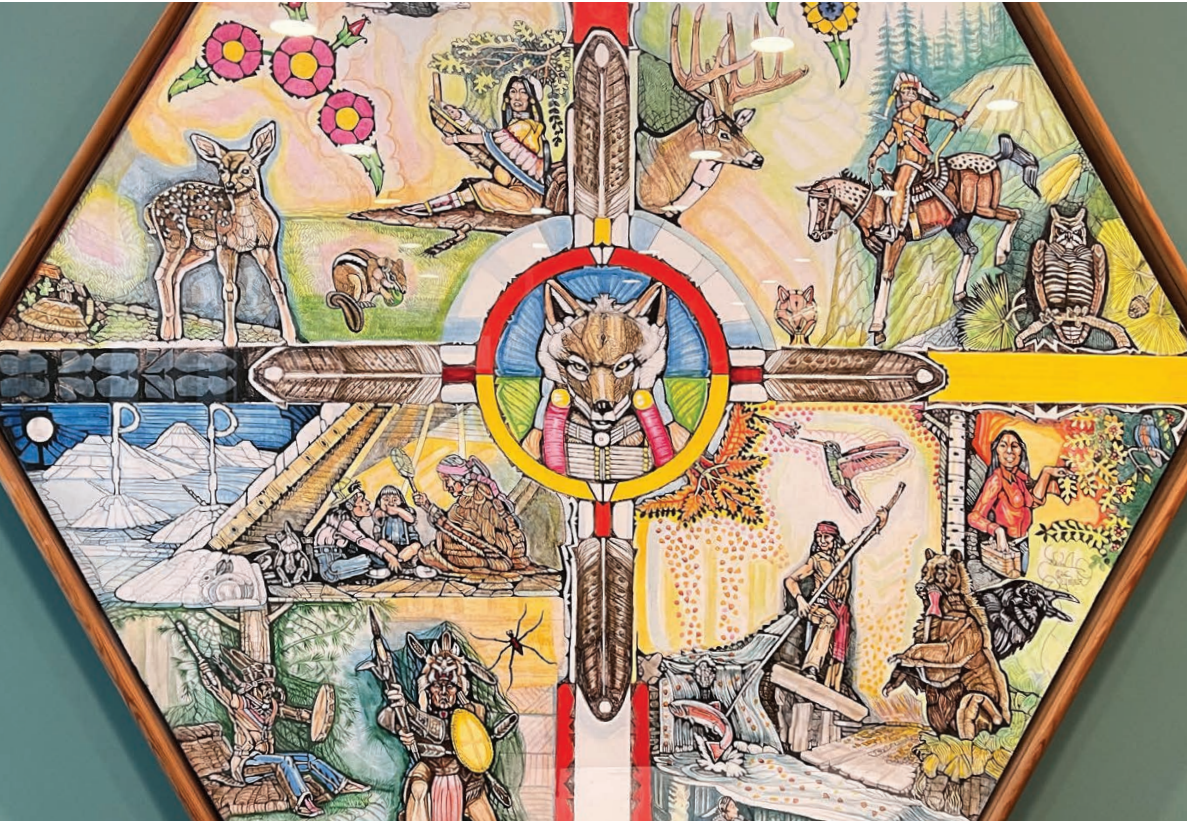
Xetspesqt Sunday	Nekwesqt Monday	Selesqt Tuesday	Kellesqt Wednesday	Mesesqt Thursday	Tselksteqt Friday	Teqmekstesqt Saturday
				1	2	3
4	5  Labour Day	6	7	8	9	10
11	12	13	14	15	16	17
18	19	20	21	22  Fall Equinox First Day of Autumn	23	24
25	26	27	28	29	30  Truth & Reconciliation & Orange Shirt Day	



Thompson Rivers University campuses are on the traditional lands of the Tk'emlúps te Secwépemc (Kamloops campus) and the T'exelc (Williams Lake campus) within Secwépemcúluw, the traditional and unceded territory of the Secwépemc. The region TRU serves also extends into the territories of the St'át'imc, Nlaka'pamux, Nuxalk, Tsilhqot'in, Dakelh, and Syilx peoples.

2022





TRU Indigenous Education

Drum created by the late Tk'emlúps te Secwépemc artist Dave Seymour features traditional and contemporary activities of Secwépemc people. It also includes stories and animals from the nation.

September  
S M T W T F S  
1 2 3  
4 5 6 7 8 9 10  
11 12 13 14 15 16 17  
18 19 20 21 22 23 24  
25 26 27 28 29 30

# Pesllwélsten - October

ABANDONING MONTH

November  
S M T W T F S  
1 2 3 4 5  
6 7 8 9 10 11 12  
13 14 15 16 17 18 19  
20 21 22 23 24 25 26  
27 28 29 30

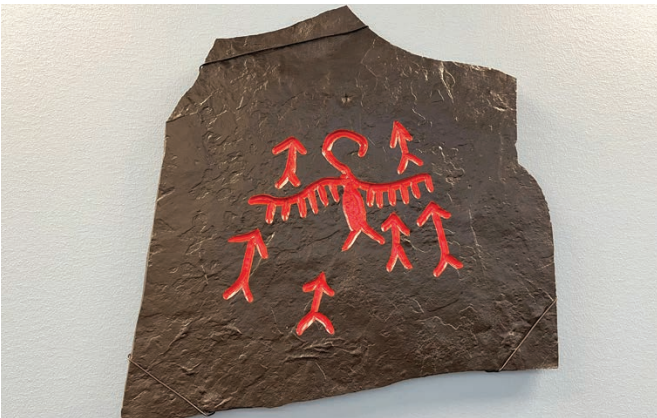
Xetspesqt Sunday	Nekwesqt Monday	Selesqt Tuesday	Kellesqt Wednesday	Mesesqt Thursday	Tselksteqt Friday	Teqmekstesqt Saturday
						1
2	3	National Day of Action for Missing and Murdered Indigenous Women & Girls	4	5	6	7
8	9	10	11	12	13	14
15	16	17	18	19	20	21
22	23	24	25	26	27	28
29	30	31				
	Halloween					



Thompson Rivers University campuses are on the traditional lands of the Tk'emlúps te Secwépemc (Kamloops campus) and the Tselxw (Williams Lake campus) within Secwépemcúluw, the traditional and unceded territory of the Secwépemc. The region TRU serves also extends into the territories of the St'át'imc, Nlaka'pamux, Nuxalk, Tsilhqot'in, Dakelh, and Syilx peoples.

2022





TRU Indigenous Education



Traditional Secwépemc petroglyphs on stone slate created by Tk'emlúps te Secwépemc artist Ed Jensen are located in OLARA, 2nd floor.

October  
S M T W T F S  
1  
2 3 4 5 6 7 8  
9 10 11 12 13 14 15  
16 17 18 19 20 21 22  
23 24 25 26 27 28 29  
30 31

# Pellc7ell7úllcwten - November

ENTERING THE PIT HOUSES MONTH

December  
S M T W T F S  
1 2 3  
4 5 6 7 8 9 10  
11 12 13 14 15 16 17  
18 19 20 21 22 23 24  
25 26 27 28 29 30 31

Xetspesqt Sunday	Nekwesqt Monday	Selesqt Tuesday	Kellesqt Wednesday	Mesesqt Thursday	Tselksteqt Friday	Teqmekstesqt Saturday
		 1	2	3	4	5
6	7	 8 National Indigenous Veterans Recognition Day	9	10	11	12
Daylight Savings Time Ends	National Inuit Day		 16 Louis Riel Day	17	18	19
13	14	15	22	23	24	25
20	21	22	23	24	25	26
National Addictions Awareness Week						
27	28	29	30			



Thompson Rivers University campuses are on the traditional lands of the Tk'emlúps te Secwépemc (Kamloops campus) and the Texelc (Williams Lake campus) within Secwépemcúlcw, the traditional and unceded territory of the Secwépemc. The region TRU serves also extends into the territories of the Stát'imc, Nlaka'pamux, Nuxalk, Tsilhqot'in, Dakelh, and Sylix peoples.

2022



TRU Indigenous Education

The HOL 190 conference room in the Brown Family House of Learning is designed in the style of the traditional pit houses or winter homes of the Secwépemc peoples.

November  
S M T W T F S  
1 2 3 4 5  
6 7 8 9 10 11 12  
13 14 15 16 17 18 19  
20 21 22 23 24 25 26  
27 28 29 30

# Pelltetéqem - December

CROSS OVER MONTH: DAYS ARE GETTING LONGER

January 2023  
S M T W T F S  
1 2 3 4 5 6 7  
8 9 10 11 12 13 14  
15 16 17 18 19 20 21  
22 23 24 25 26 27 28  
29 30 31

Xetspesqt Sunday	Nekwesqt Monday	Selesqt Tuesday	Kellesqt Wednesday	Mesesqt Thursday	Tselksteqt Friday	Teqmekstesqt Saturday
				1	2	3
4	5	6	7	8	9	10
11	12	13	14	15	16	17
18	19	20	21	22	23	24
			Winter Solstice - First Day of Winter			Christmas Eve
25	26	27	28	29	30	31
Christmas						New Year's Eve



Thompson Rivers University campuses are on the traditional lands of the Tk'emlúps te Secwépemc (Kamloops campus) and the Texelc (Williams Lake campus) within Secwépemcúluw, the traditional and unceded territory of the Secwépemc. The region TRU serves also extends into the territories of the Stát'imc, Nlaka'pamux, Nuxalk, Tsilhqot'in, Dakelh, and Syilx peoples.

2022



On the cover:



In Secwépemc oral history, the wolf—or Mélemstye in the local Secwepemctsin dialect—teaches people to hunt, and the important qualities a hunter needs to be successful: patience, vigilance, alertness and an understanding of the environment, among other things. The same qualities are important for a successful student who, like the hunter, must devise a strategy to reach their end goal.



The Indigenous Education image shows Seklép (Creator, Trickster, teacher) on his educational journey at TRU. This image is synonymous with Indigenization and represents working in partnership & supporting one another.

The dark blue on the outside represents Séwllkwe (Water), the green represents Specéc (Air), the brown represents the Tmicw (Land), the orange represents the Skwékw7es (Sun) and the yellow represents the Mégcen (Moon)



TRU is proud to host the highest number of Indigenous students of any BC post-secondary, with 11% Indigenous (First Nations, Métis) students at Kamloops campus (approximately 3,000), 30% at the Williams Lake campus, and 6% taking classes through Open Learning. TRU's service area includes over 80 First Nation bands and includes Métis organizations.

On the back cover:

The Gathering Place for Indigenous students at TRU Williams Lake campus follows the design of a Secwepemc traditional winter home.



2022 **Secwépemc** Calendar

