

# FACILITIES SERVICES RENOVATIONS 2016

# Completed Summer Projects

(Pictures have been taken for *highlighted* rows)

Task Name	Duration	Start	Finish	% Complete
<b>Arts &amp; Education</b>				<b>100%</b>
AE362	99 days	Mon 2/15/16	Thu 6/30/16	100%
3rd Floor Flooring	99 days	Mon 2/15/16	Thu 6/30/16	100%
AE300A	139.88 days	Mon 2/15/16	Fri 8/26/16	100%
AE305	75 days	Fri 5/13/16	Fri 8/26/16	100%
<b>Clock Tower</b>				<b>100%</b>
CT 4th Floor	53.88 days	Wed 5/25/16	Mon 8/8/16	100%
CT 201 Area	49 days	Fri 2/21/16	Fri 4/19/16	100%
CT 202 Area	65.88 days	Fri 5/20/16	Fri 8/19/16	100%
CT 3rd Floor Flooring	72.88 days	Wed 5/11/16	Fri 8/19/16	100%
<b>Culinary Arts</b>				<b>100%</b>
CATC301	22 days	Thu 7/28/16	Fri 8/26/16	100%
<b>Daycare Centre</b>				<b>100%</b>
Roofing Replacement	54.88 days	Mon 5/16/16	Fri 7/29/16	100%
<b>International Building</b>				<b>100%</b>
IB 2057 & 2058	116.88 days	Mon 5/2/16	Tue 10/11/16	100%
IB 3007	129.88 days	Mon 2/15/16	Fri 8/12/16	100%
<b>Old Main</b>				<b>100%</b>
OM3793 Area	65.88 days	Fri 5/27/16	Fri 8/26/16	100%
OM Maple Leaf School	77.88 days	Wed 5/11/16	Fri 8/26/16	100%
OM Health & Wellness	77.88 days	Wed 5/11/16	Fri 8/26/16	100%
OM 2712	68.88 days	Tue 3/29/16	Fri 7/1/16	100%
OM Student Services	135.88 days	Fri 2/19/16	Fri 8/26/16	100%
OM2517, OM2533	139.88 days	Mon 2/15/16	Fri 8/26/16	100%
OM Level 2 Classrooms	115 days	Mon 2/15/16	Fri 7/22/16	100%
<b>Science Building</b>				<b>100%</b>
SC Flooring Upgrade	36.88 days	Wed 5/11/16	Thu 6/30/16	100%

# Arts & Education Building

# AE Level 2 Lounge:

- Replaced flooring
- New furniture
- Glass walls



# AE Level 2 Lounge:

- Replaced flooring
- New furniture
- Glass walls



## AE 305:

- Created a “Cyber Café”
- New furniture
- New flooring
- Fresh paint



## AE 305:

- Created a “Cyber Café”
- New furniture
- New flooring
- Fresh paint

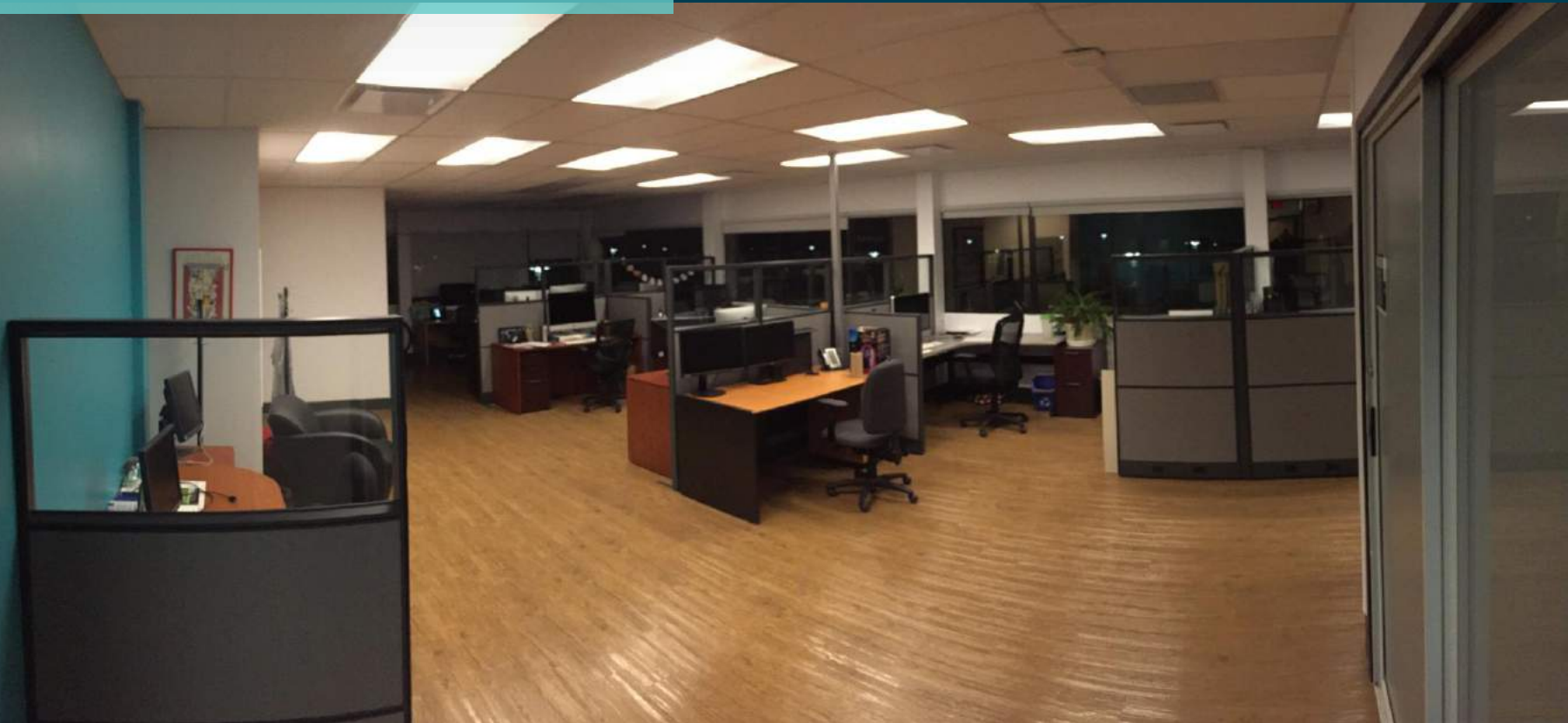


# Clock Tower



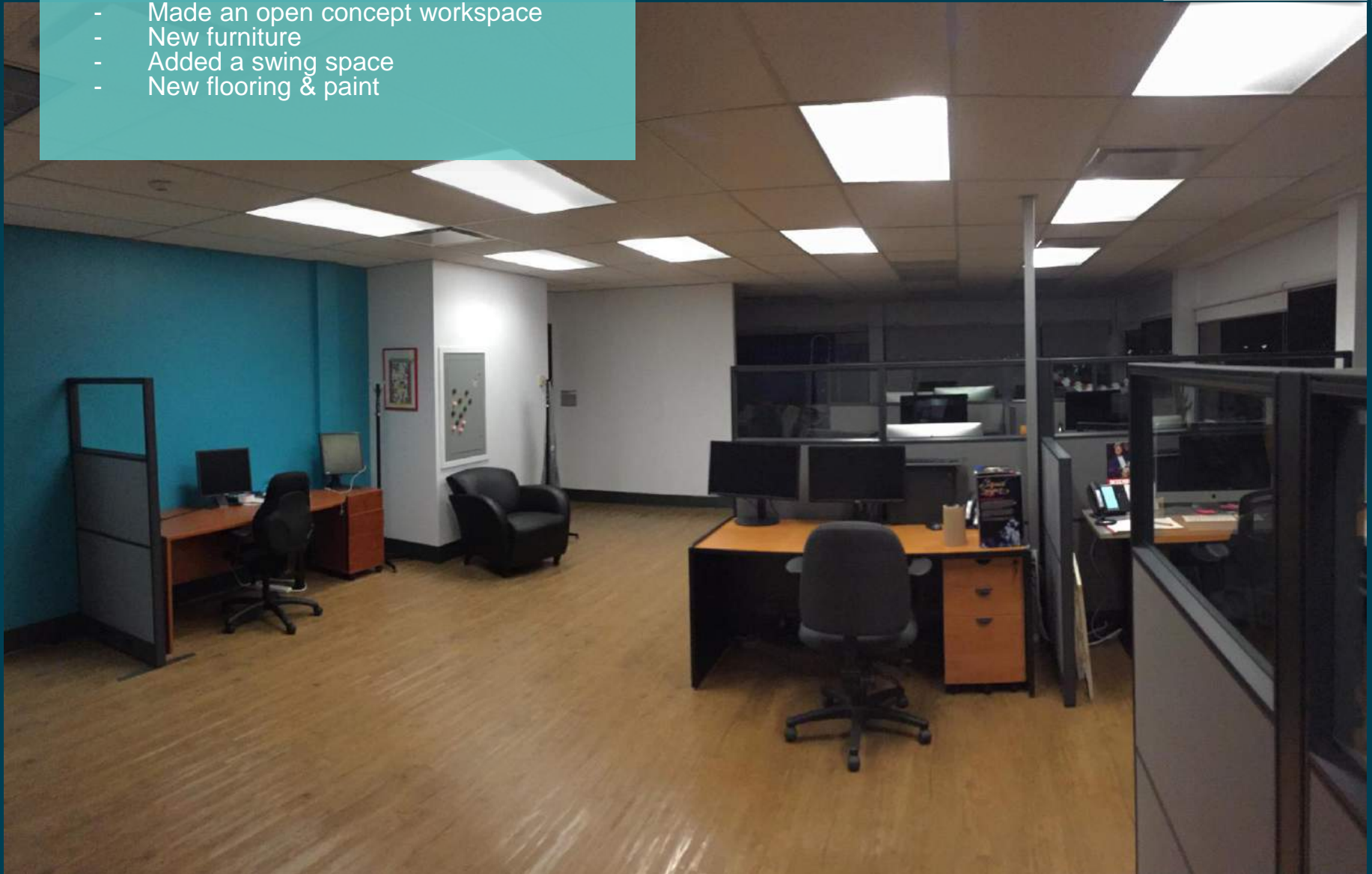
## CT 202 Area:

- Made an open concept workspace
- New furniture
- Added a swing space
- New flooring & paint



## CT 202 Area:

- Made an open concept workspace
- New furniture
- Added a swing space
- New flooring & paint



## CT 202 Area:

- Made an open concept workspace
- New furniture
- Added a swing space
- New flooring & paint



## CT 400 Area:

- Made an open concept workspace
- New furniture
- New flooring
- New paint



## CT 400 Area:

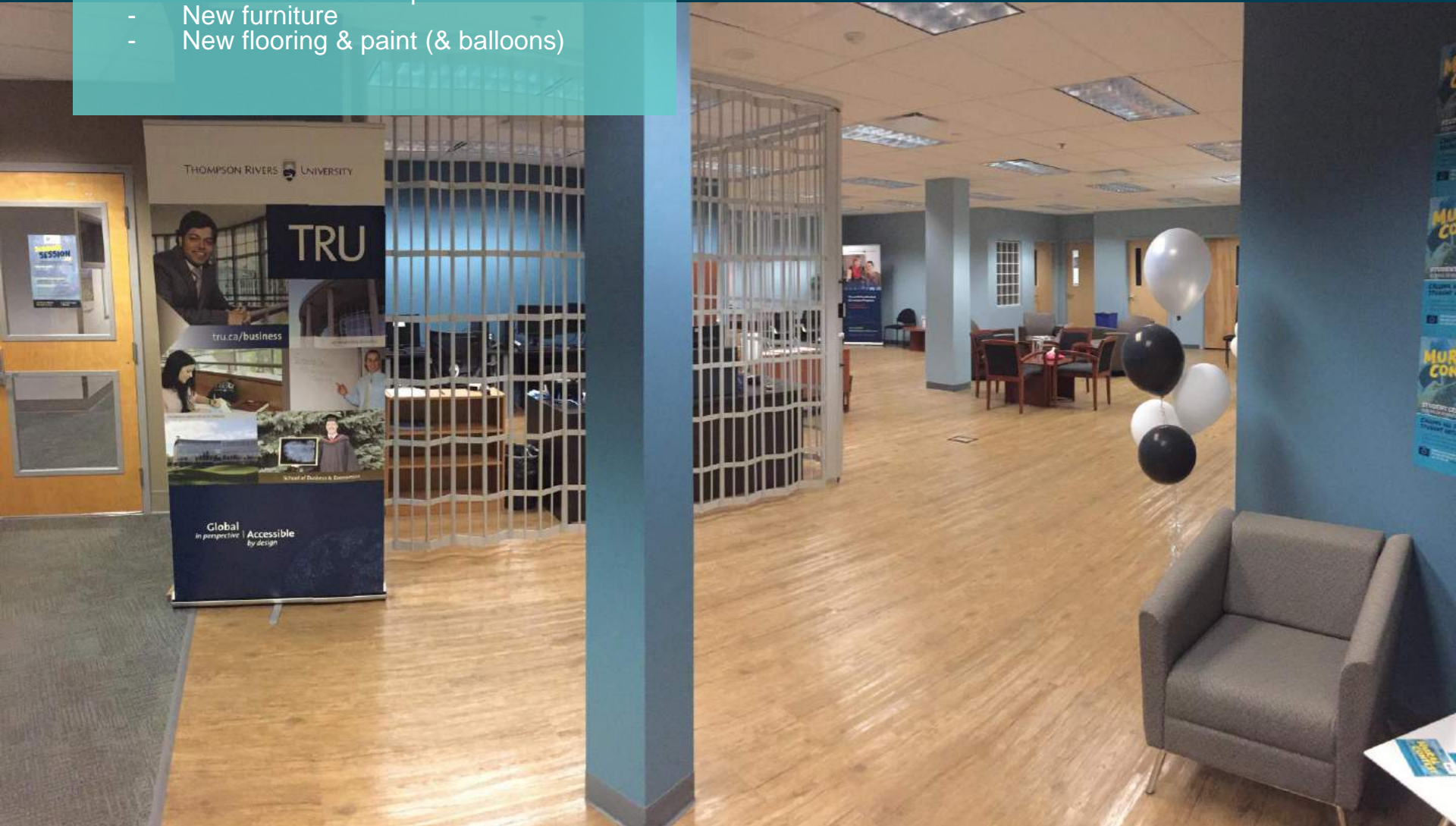
- Made an open concept workspace
- New furniture
- New flooring
- New paint



# International Building

## IB 2057 & 2058:

- Removed language labs
- Created multi-use space
- New furniture
- New flooring & paint (& balloons)



## IB 2057 & 2058:

- Removed language labs
- Created multi-use space
- New furniture
- New flooring & paint (& balloons)





# Old Main

# Multi-Use Courts:

- Installed on green-space
- Positive feedback so far



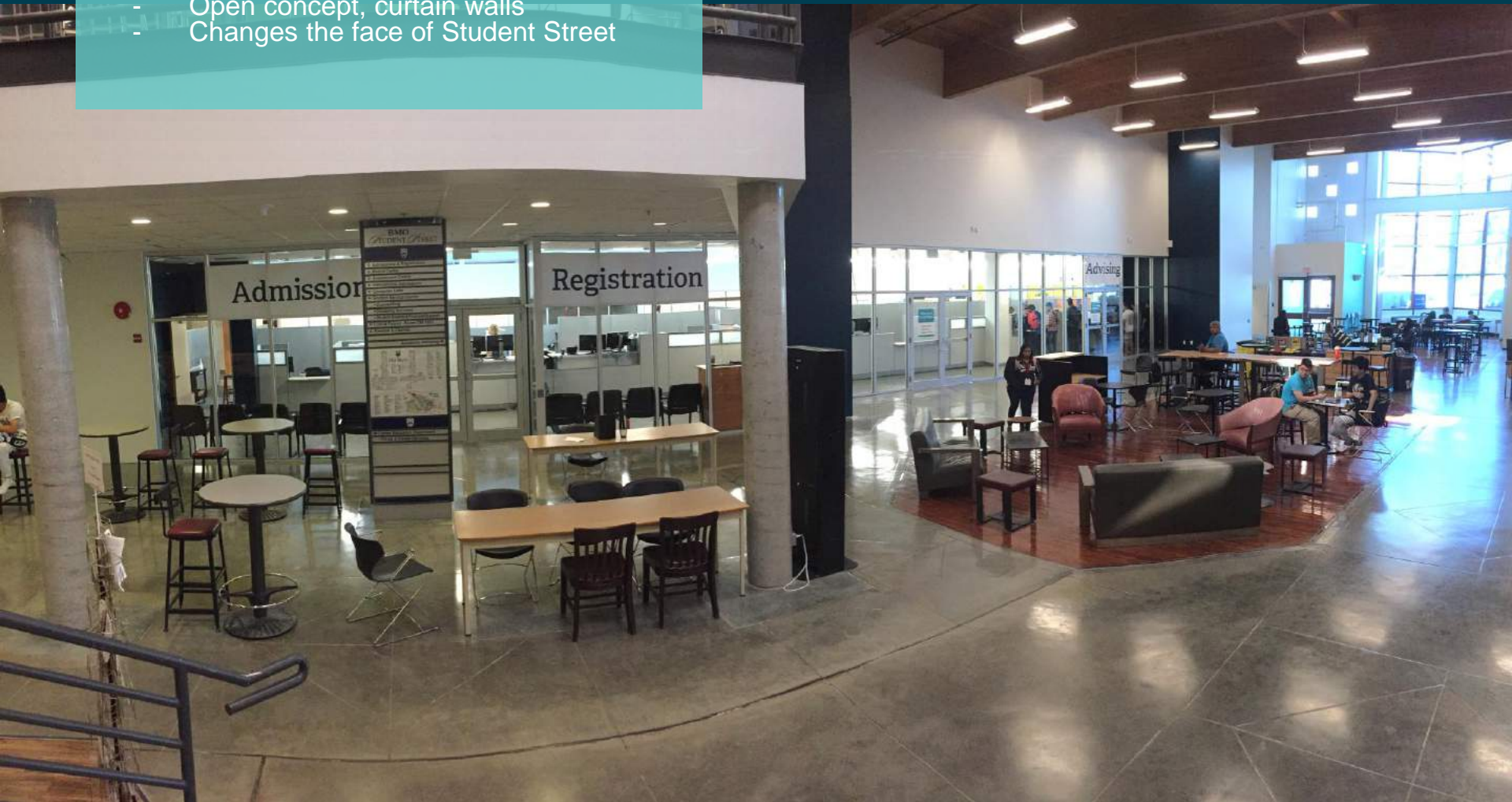
## OM Student Services:

- Redesigned whole area
- New furniture, paint, flooring
- Open concept, curtain walls
- Changes the face of Student Street



## OM Student Services:

- Redesigned whole area
- New furniture, paint, flooring
- Open concept, curtain walls
- Changes the face of Student Street



# Before:



# After:



## OM Maple Leaf School:

- Created 4 classrooms
- 2 offices
- New furniture, paint, flooring
- Separated from rest of Old Main



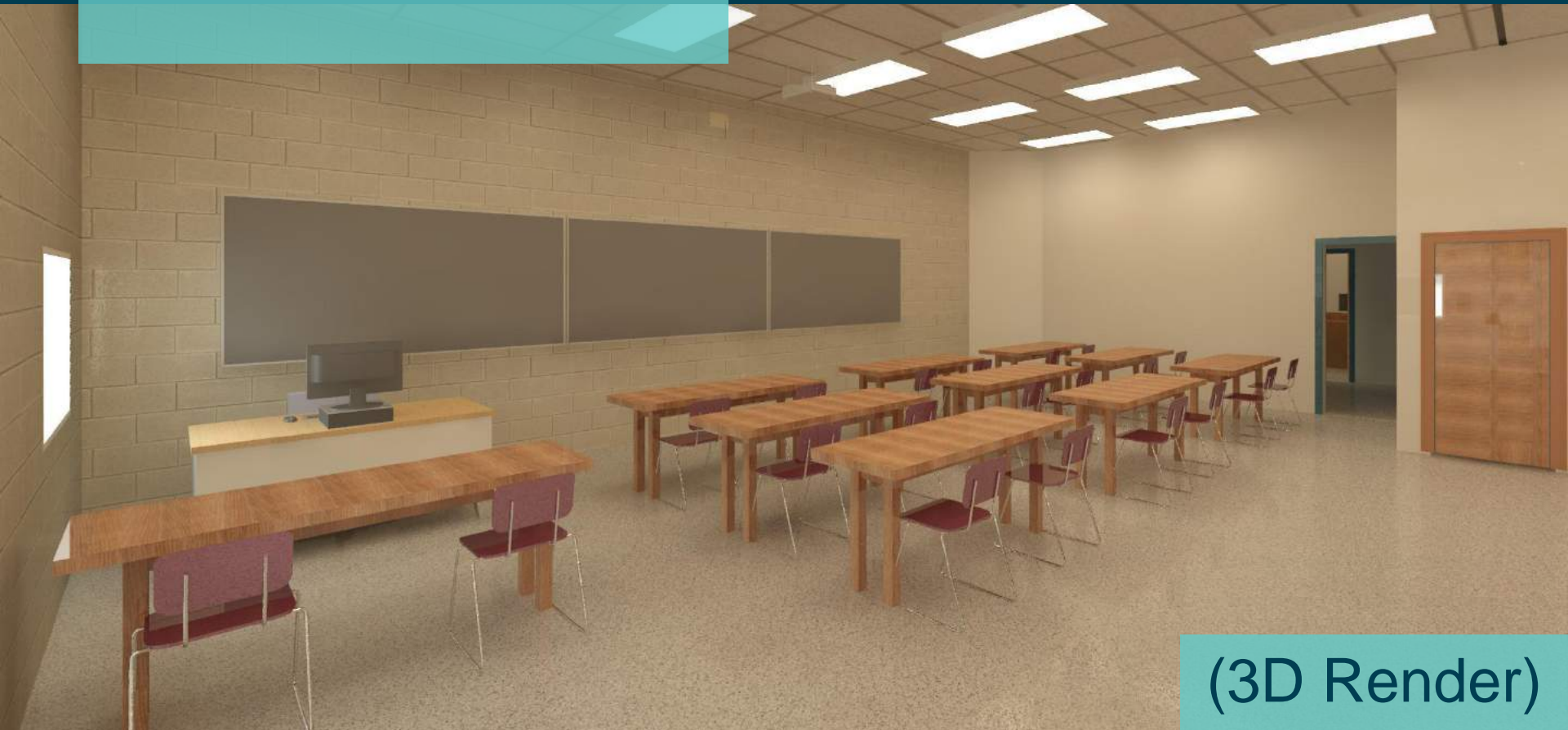
## OM Maple Leaf School:

- Created 4 classrooms
- 2 offices
- New furniture, paint, flooring
- Separated from rest of Old Main



## OM Maple Leaf School:

- Created 4 classrooms
- 2 offices
- New furniture, paint, flooring
- Separated from rest of Old Main



(3D Render)



## OM 2517 & 2533:

- Moved language lab from IB
- Merged 2 classrooms
- New furniture, paint, flooring



# OM 2712:

- Renovated ARET lab
- Rotated classroom orientation
- New furniture, paint



# OM 3791 & 3793:

- 6 offices from 2 meeting rooms
- New furniture, paint
- New doors



# Current & Future Projects

Task Name	Duration	Start	Finish	% Complete
<b>Arts &amp; Education</b>				<b>10%</b>
Level 3 Washrooms		Thu 12/1/16	Wed 1/11/17	10%
Flooring replacement		Mon 5/1/17		0%
<b>BC Centre for Open Learning</b>				
BCCOL 2nd Floor		Tue 10/4/16	Fri 3/17/17	20%
BCCOL 4th Floor		Fri 9/9/16	Fri 3/24/17	20%
BCCOL 349		Fri 9/2/16	Wed 11/30/16	30%
<b>Old Main</b>				
Tourism Gear Bay				20%
OM ESTR		Mon 5/1/17		25%
OM4613		Fri 9/9/16	Fri 12/2/16	10%
<b>Trades &amp; Technology</b>				
TT Plumbing & Electrical		Wed 5/11/16	Fri 12/2/16	70%
TT Instrumentation		Mon 12/5/16	Fri 1/13/17	50%

More information regarding Facilities' current & future projects can be found on [OneTRU](#) under "Facilities Projects," it is updated weekly.