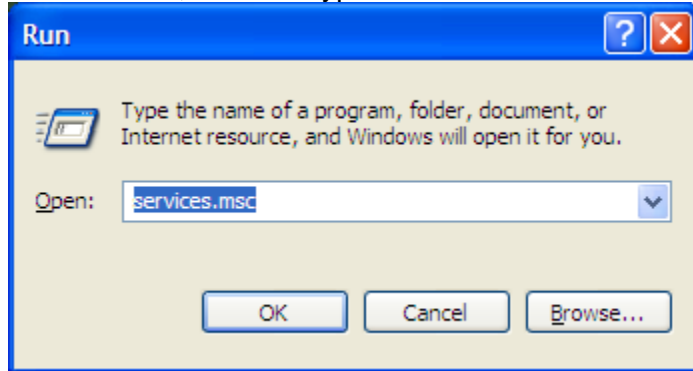
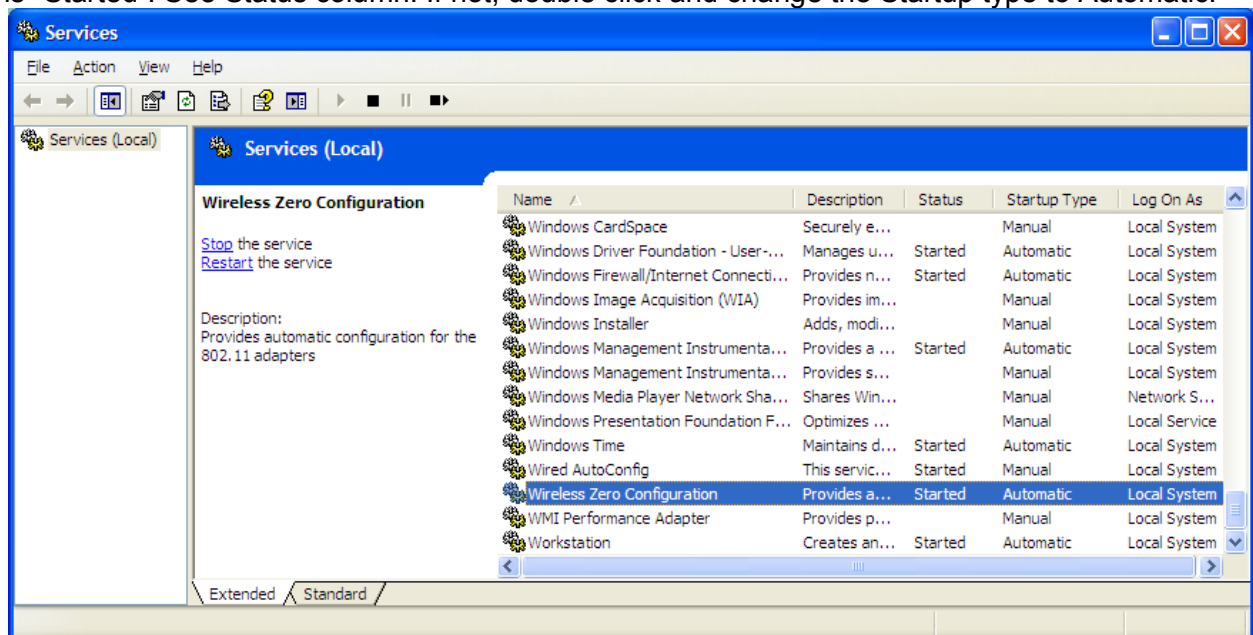


Windows XP EduRoam setup

Click on Start, Run and type in services.msc



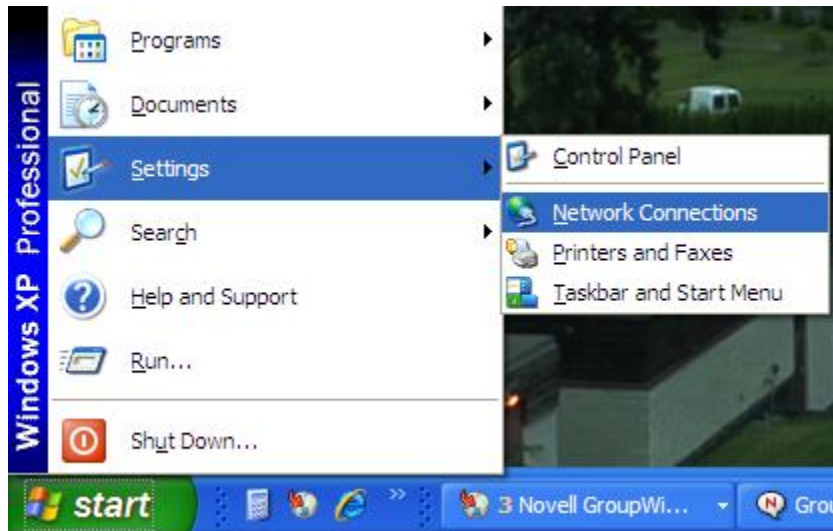
Scroll down to the bottom of the list to locate Wireless Zero Configuration. Verify that the status is "Started". See Status column. If not, double click and change the Startup type to Automatic.



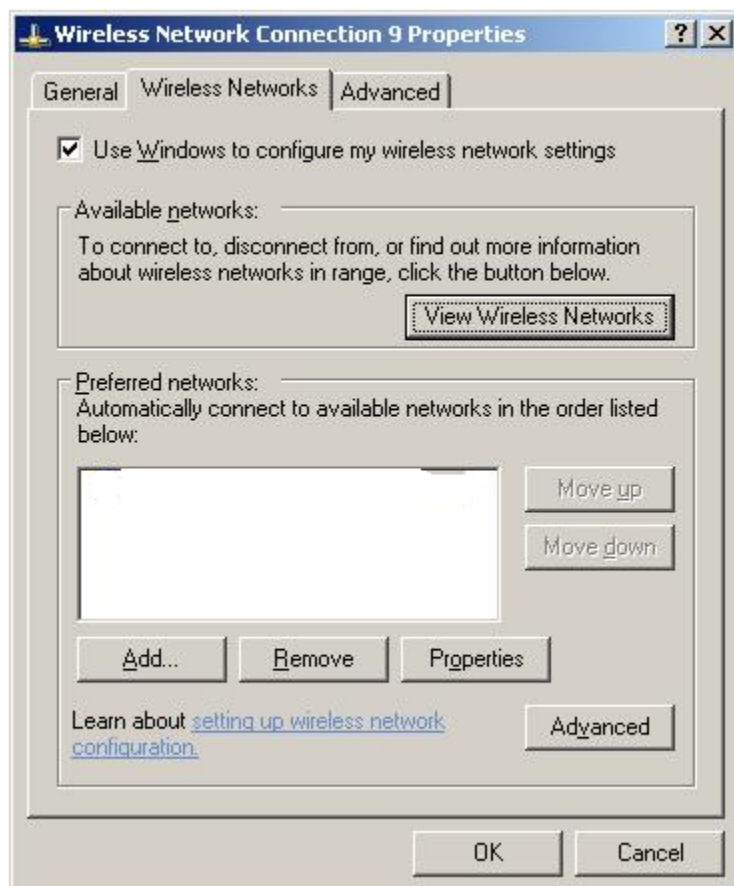
Close this window.

Windows XP EduRoam setup

Click on Start, Control Panel, Network Connections.



Right click on your wireless network card and select Properties. Click on the “Wireless Networks” tab.



Note: If there are already eduroam Preferred network instances, remove them all and create a new one as noted below to ensure that setup is correct.

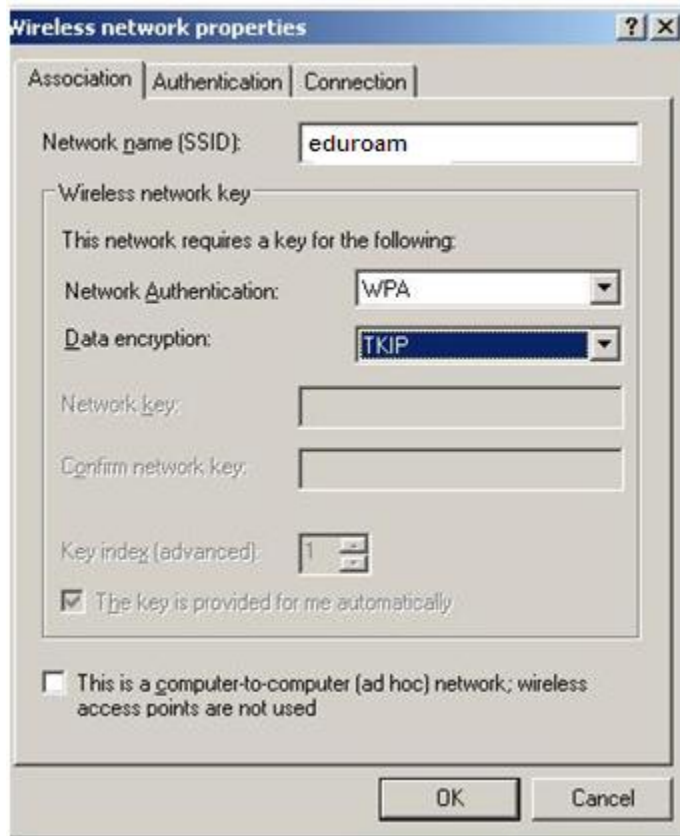
Click Add at the bottom. And enter the following information:

- Network name (SSID) : eduroam (must be lowercase)

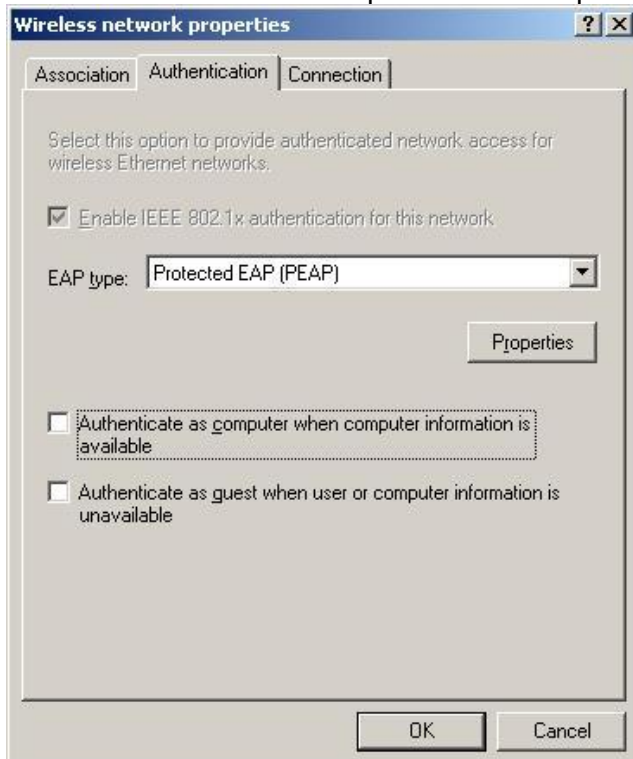
Windows XP EduRoam setup

- Network Authentication : WPA (note: WPA and WPA-PSK are not the same and selecting WPA-PSK will not allow the connection to operate properly)
- Data Encryption : TKIP

Make sure that your settings match the picture below.

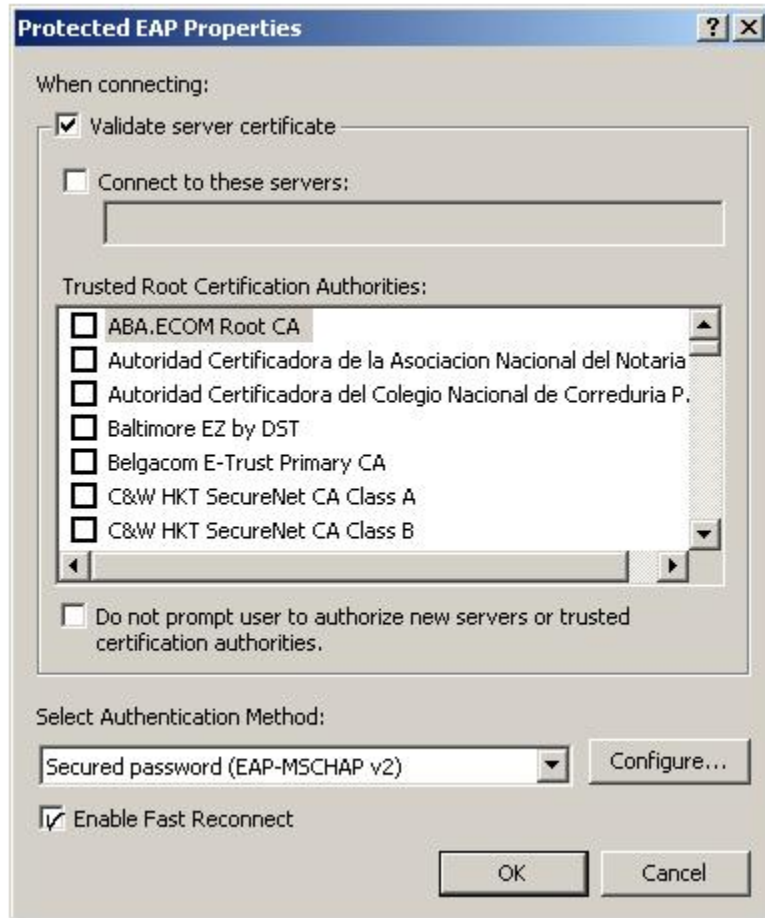


Select the Authentication tab. For EAP Type select Protected EAP (PEAP), then uncheck and turn off Authenticate as computer when computer information is available.



Windows XP EduRoam setup

Click the Properties button and click the Configure button at the bottom. Uncheck and turn off automatically use my Windows login name and password.



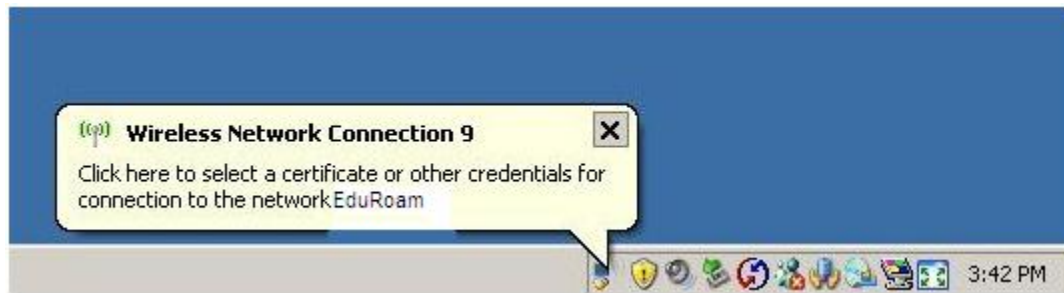
Click on the Enable Fast Reconnect box for quick reconnection.



Click **OK** buttons and close any Windows to exit the configuration. In a few seconds, the network card will contact the "eduroam" network.

*****Click the bubble at the bottom right hand corner to login.**

Windows XP EduRoam setup

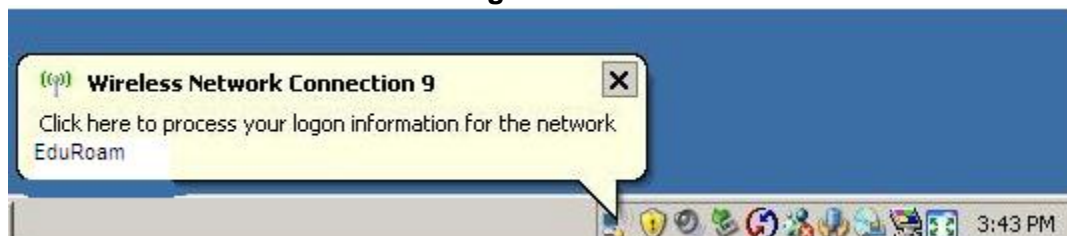


Enter your TRU *user name@tru.ca* and *password*. Click **OK**.



The wireless card will authenticate with the network and send a security certificate to your computer.

*****Click the bubble at the bottom right hand corner and then click OK to accept.**



Windows XP EduRoam setup



You are now connected to the WPA enabled, EduRoam Secure Network.