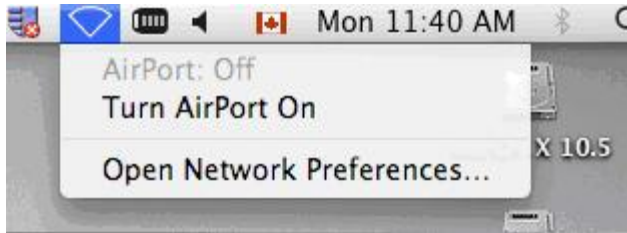
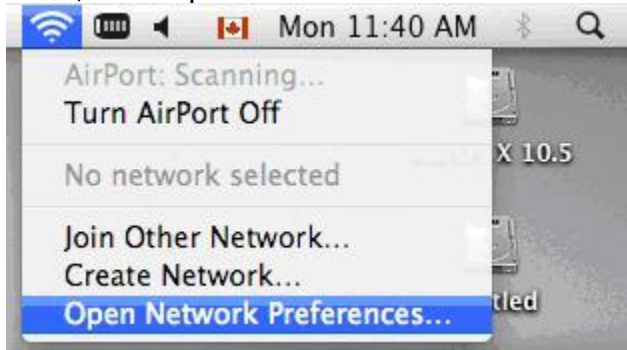


## EduRoam for MAC 10.5

Click the Wireless icon at the top of the screen. If the Airport is currently off, click **Turn AirPort On**.

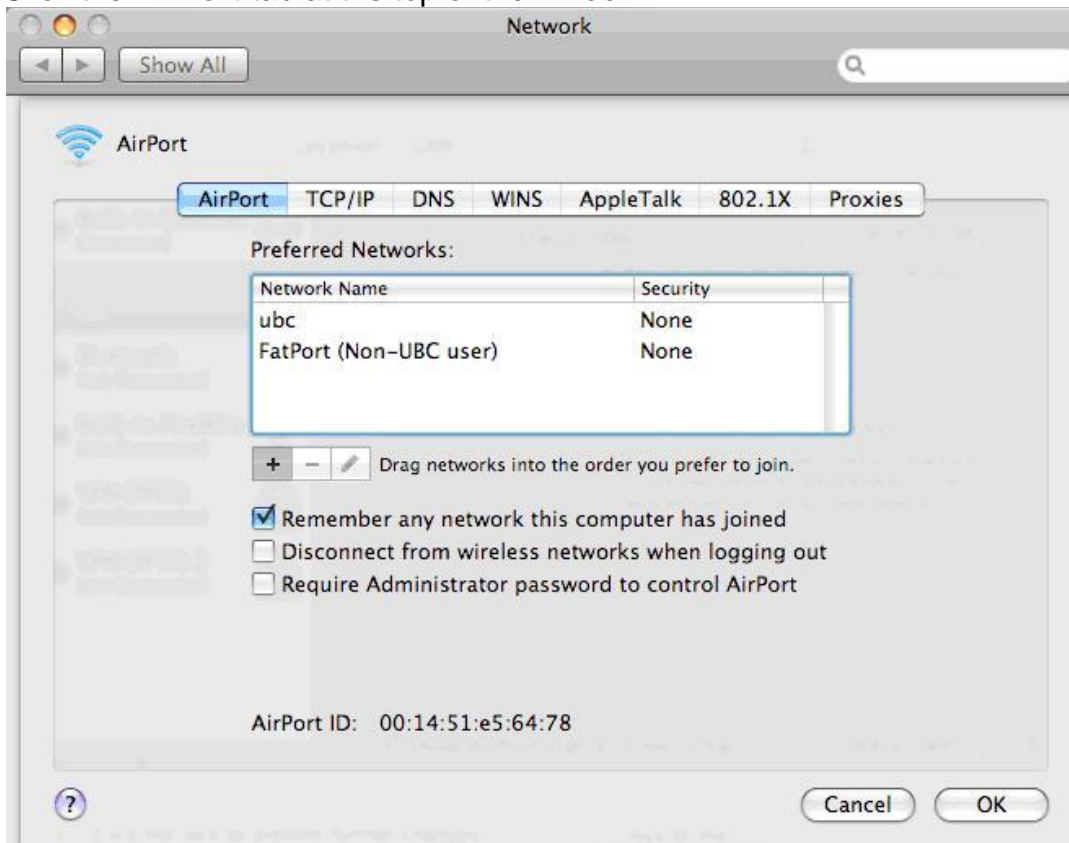


Then, click Open Network Preferences.

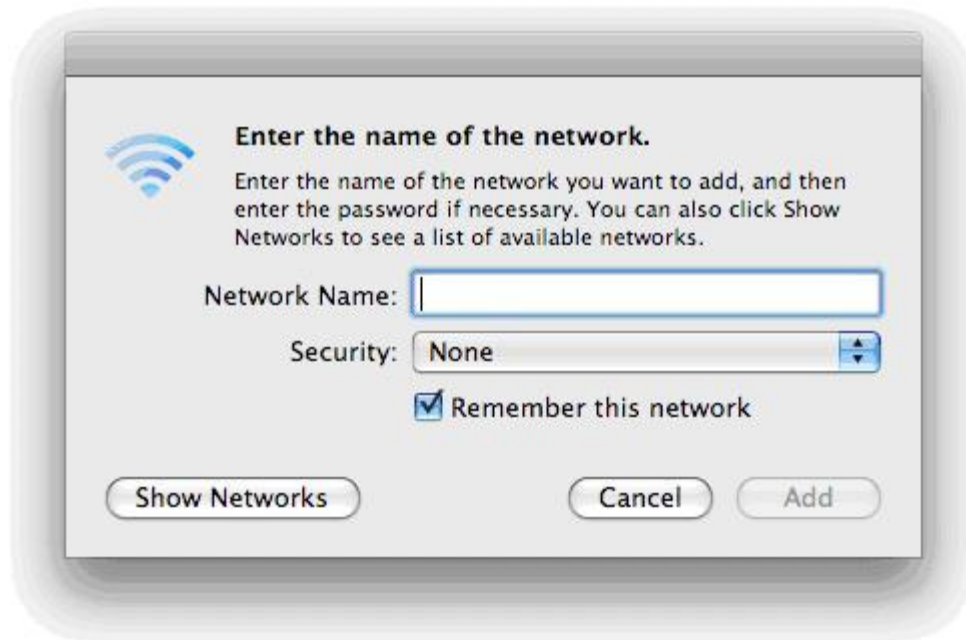


The **Network** window should now be open. Click the **Advanced** button at the bottom right.

Click the **AirPort** tab at the top of the window.



Click the **+** symbol below the list of **Preferred Networks**.



For **Network Name**, type *EduRoam*  
For **Security**, select *WPA Enterprise*.  
Leave the **User Name** and **Password** field blank.  
For **802.1X**, select *Automatic*.  
Click **Add**.

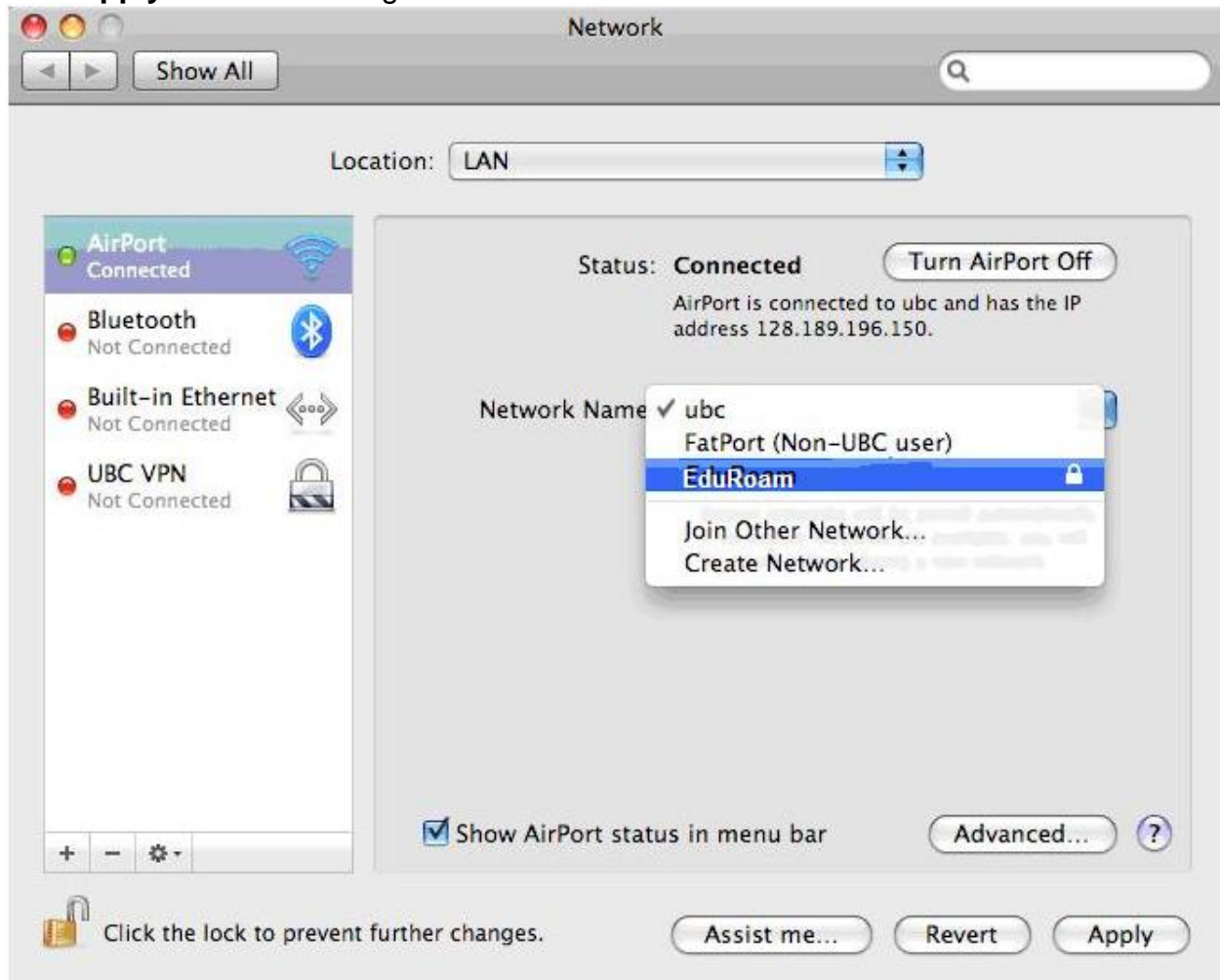


## EduRoam for MAC 10.5

Click **OK** at the advanced **Network** window. You should now be at the AirPort tab of the **Network** window.

For **Network Name**, select *EduRoam*.

Click **Apply** at the bottom right at of the Window.



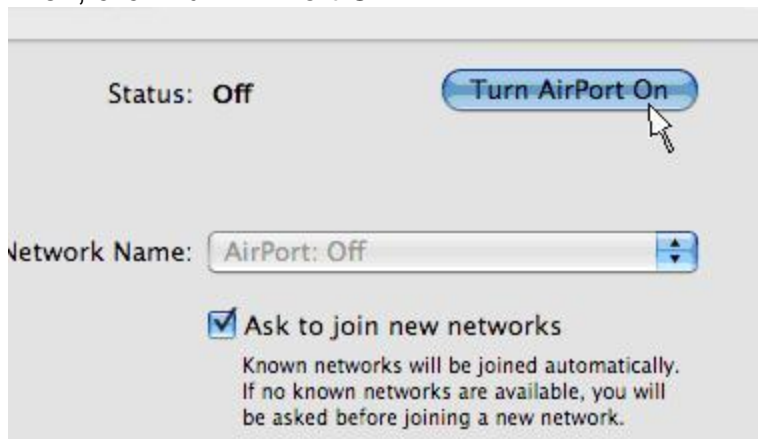
A window titled **802.1X Authentication** will appear (it may, in fact, appear before you've had a chance to click Apply). Enter your TRU Login ID@tru.ca and password and then click OK.



## EduRoam for MAC 10.5

If a connection has not been established after one minute, click the Wireless icon at the top of the screen, and turn the AirPort off.

Then, click Turn AirPort On.



Within a few seconds, your connection to *EduRoam* should be established.