



Multimedia Classroom Guide

This guide is intended to familiarize the user with the TRU multimedia equipment and its operation. Please contact Media Services if you require an orientation or if you experience technical difficulties with the systems.

Technical Support

Should you encounter technical problems please contact Media Service Technicians

Murray Doubt at 828-5336 or email mdoubt@tru.ca
Arnold Boudreau at 371-5880 or email aboudreau@tru.ca
Or
AV Services answering machine 828-5070

Multimedia classrooms have been equipped with a ceiling mount LCD projector. Inputs available to project are;

- Computer display from the podium PC, or a connection provided for a laptop computer
- VCR tape playback.
- DVD video playback. (PC DVD player)
- Elmo Document Camera (not all rooms equipped)

The system equipment is controlled from the podium computer using Projector Control software. Each room is equipped with a sound system to amplify sound from the various sources. The PC is network connected for Internet and LAN access.

Network Login

If you wish to access your Network Drive locations:

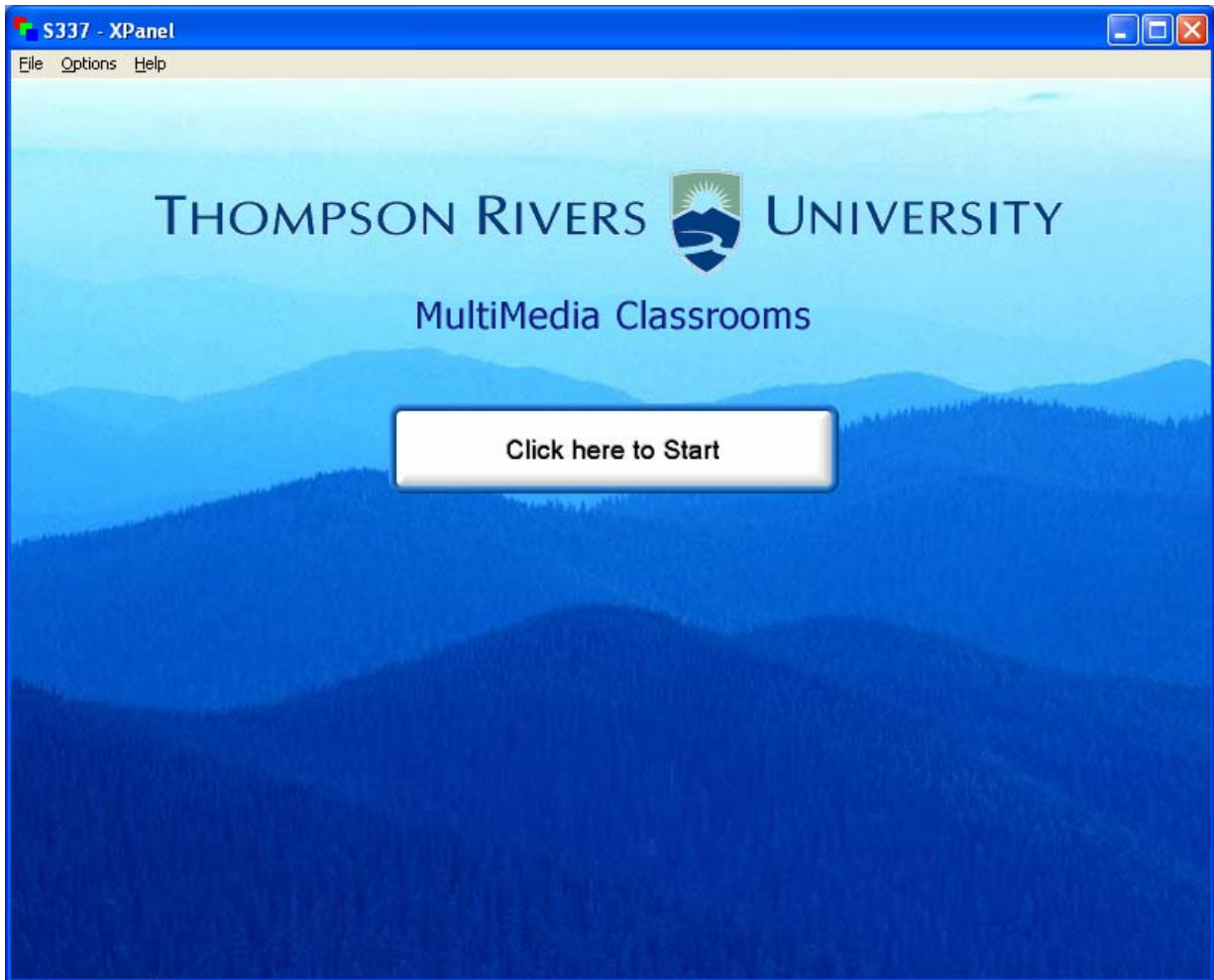
- Enter your TRU username
- Enter your password

At the Novell Login window



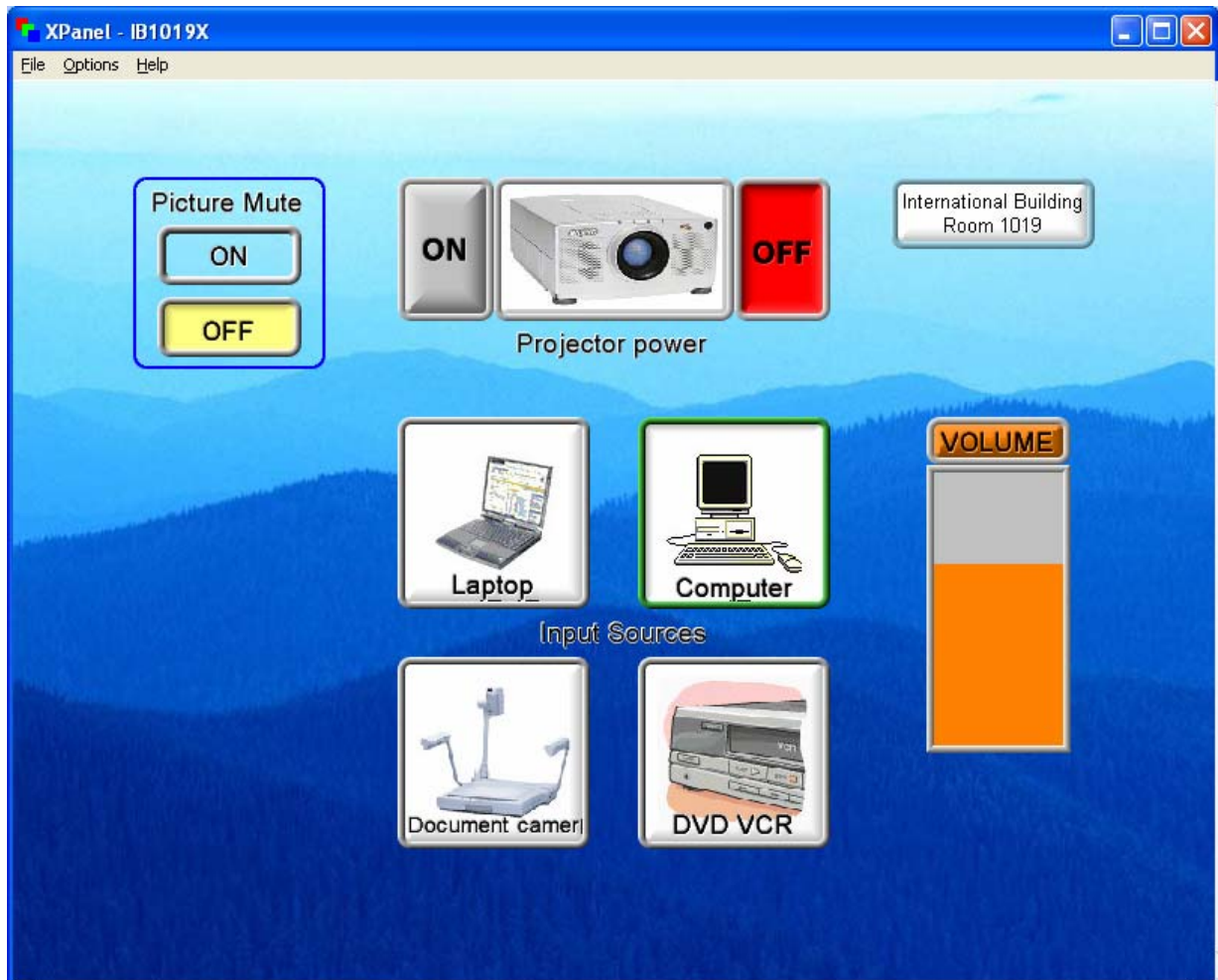
If you do not require network access, click "OK" at the Novell Login window, **no password is required**

The Multimedia systems equipment functions are controlled from the podium PC using the software package "Projector Control". The Projector Control program is loaded in the start up files on the podium PCs and will start when the PC boots. If the Projector Control is window is not active, click on the Projector Control desktop icon to activate the program.



XPanel Start Page

The Projector Control main page controls the LCD Projector and TV power, and sources (data or video) for the Projector and TVs. The VCR icon will open a corresponding control window, which will allow function (FF/Rewind etc.) control.



Xpanel Main Page



The LCD Projector is switched on or off with the icon pictured to the left. **When switching on the projector allow 2 minutes for the projector to reach full brightness.** When the Projector has been shut off allow 5 minutes for the projector cool down before re-powering.

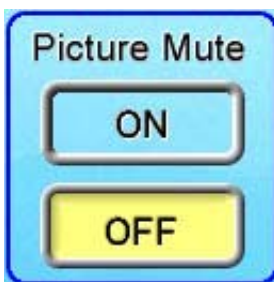
After the LCD Projector power is on, select the information source you wish to view from the Projector Control window icons.



The Computer icon routes the podium computer display to the LCD Projector.



The Laptop icon routes display information from a laptop PC to the LCD Projector. A VGA cable is available on the podium desktop to connect to the laptop.



The Picture Mute icon blanks the projection screen image. The podium monitor remains on. Click the "off" icon to restore the projection image.



Audio levels are controlled using the volume level slider on the Projector Control window. Volume is variable for the VCR and Computer audio sources. The DVD audio is adjustable within the PC DVD program as well by right clicking during DVD playback and adjusting the volume bar. Sound sources are switched when a Projector input is selected, for example, when the computer icon is selected, PC sound is routed to the amplifier. When switching from the VCR Control page back to the Main page in the Projector Control window VCR audio will be muted

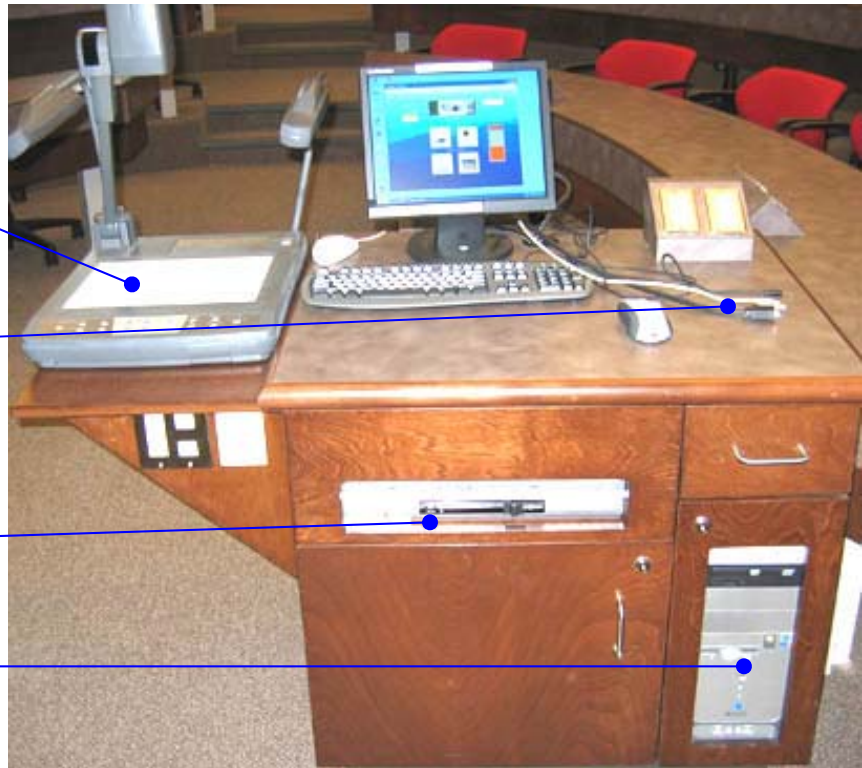
Podium Equipment Locations

Elmo Document Camera

Laptop VGA connectors

VCR

Computer

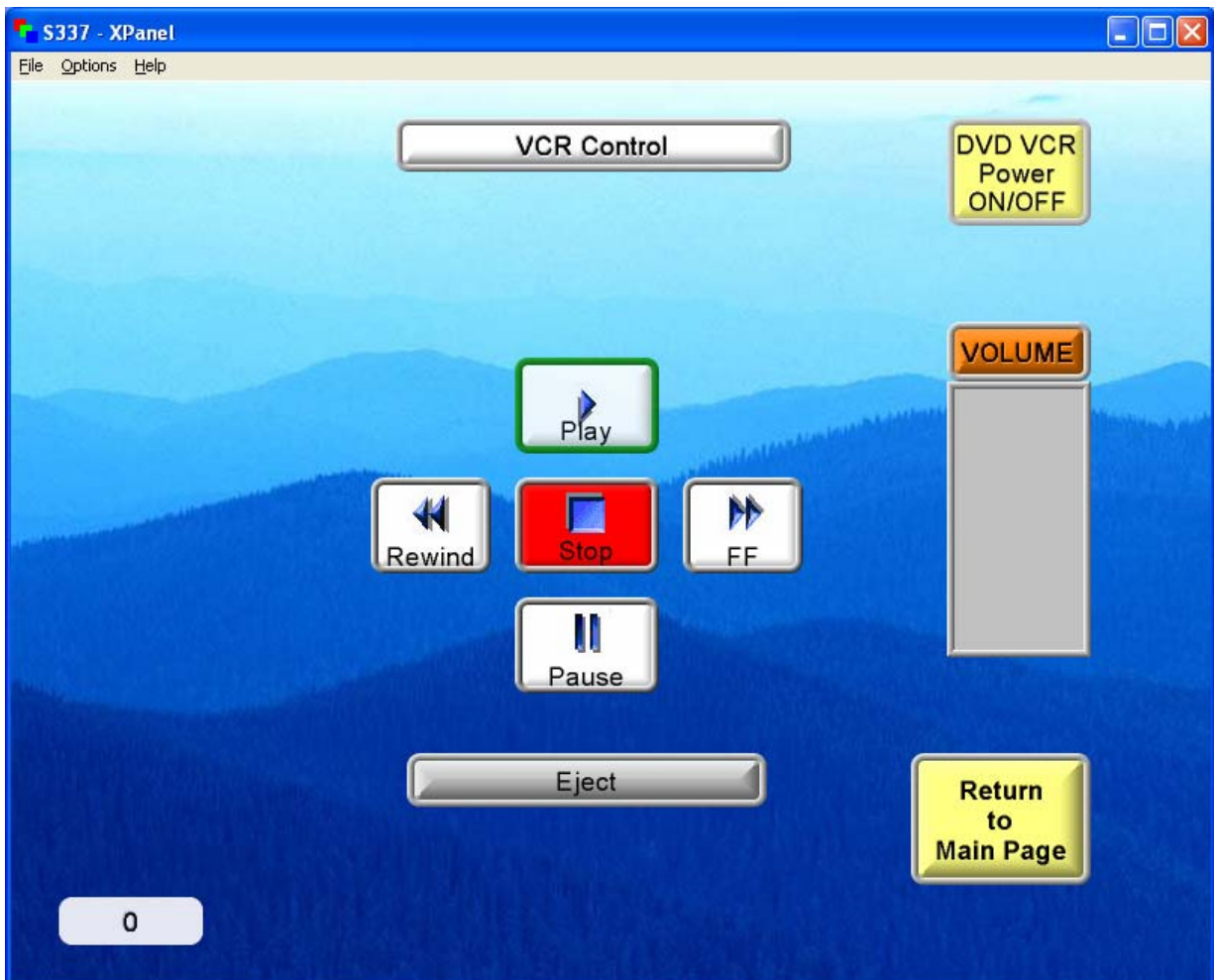


Laptop PC VGA, USB extension, and Audio connectors

VCR Control Window



When the VCR icon is selected the VCR control window will open. The icon also routes video and audio from the podium VCR to the projector. The control window allows remote control of VCR functions.



Clicking on the Function icons controls the VCR functions; Play, Fast Forward, Rewind, Pause. The volume bar controls playback sound level.