



THOMPSON RIVERS
UNIVERSITY

Conference Room Guide

Technical Support

Should you encounter technical problems please contact Help Desk **250-852-6800**

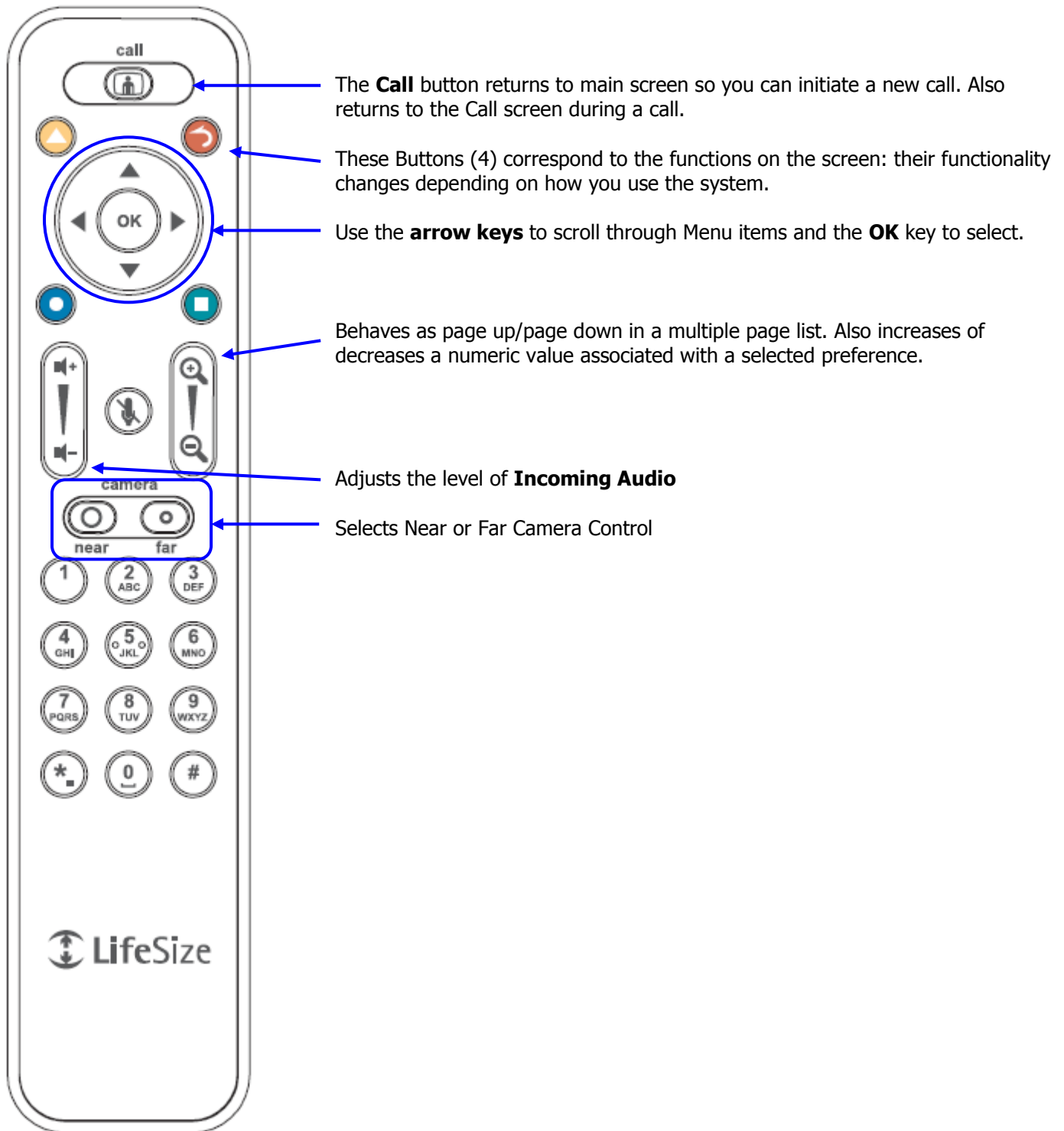
Videoconference classrooms are equipped with two cameras and a ceiling mount LCD projector. Inputs available to project are;

- Class and Lecturer Camera
- Computer display from the podium PC, or a connection provided for a laptop computer
- DVD video playback. (PC DVD player)

Control the LifeSize Room videoconference system using the remote control or the podium computer using Projector Control software. The room is equipped with a sound system to amplify sound from the various sources. The PC is network connected for Internet and LAN access.



The LifeSize remote controls all features of the LifeSize Room video conference system. The primary functions are; **video source, volume level, and call menu access.** See attached document for full guide to features



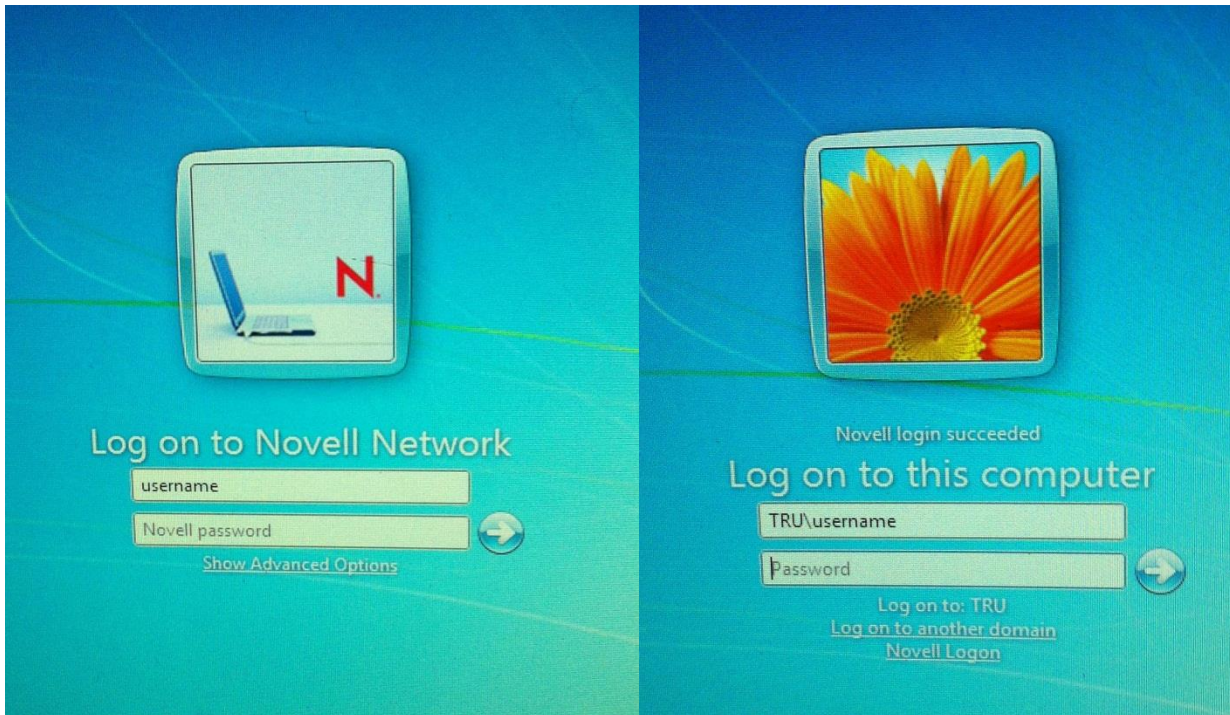
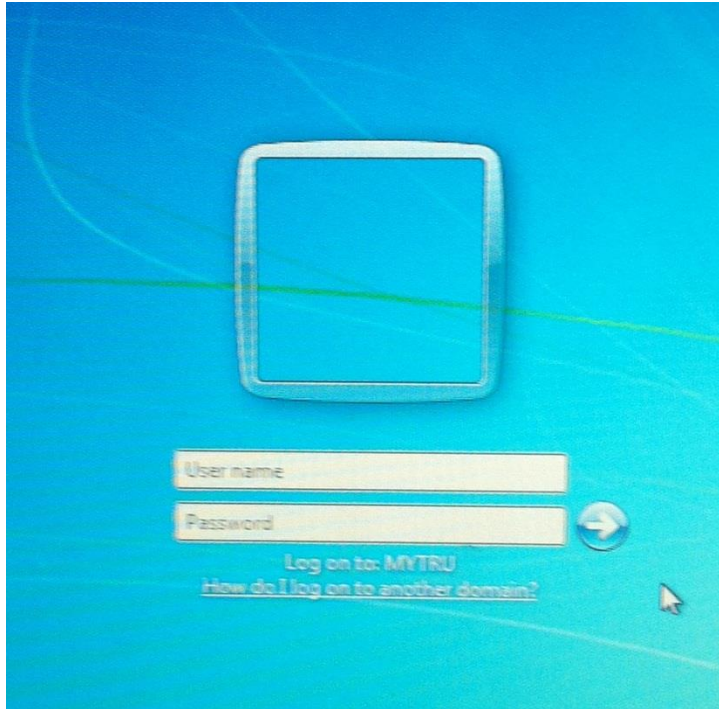
Podium PC

Faculty/Staff login in Classrooms or Computer Labs

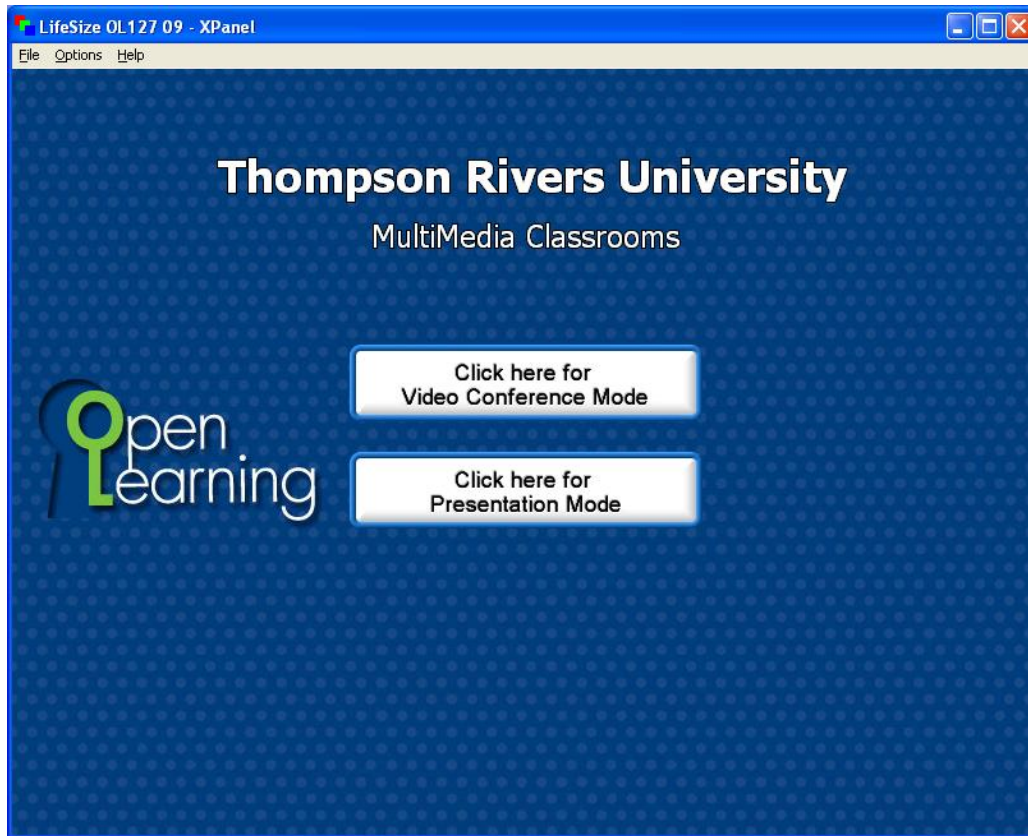
This is the Windows Active Directory login screen that all computers will eventually have.

When you see this as your login screen type "TRU\username" to login to the computer.

This login also applies to any computers that are still Windows XP as well.



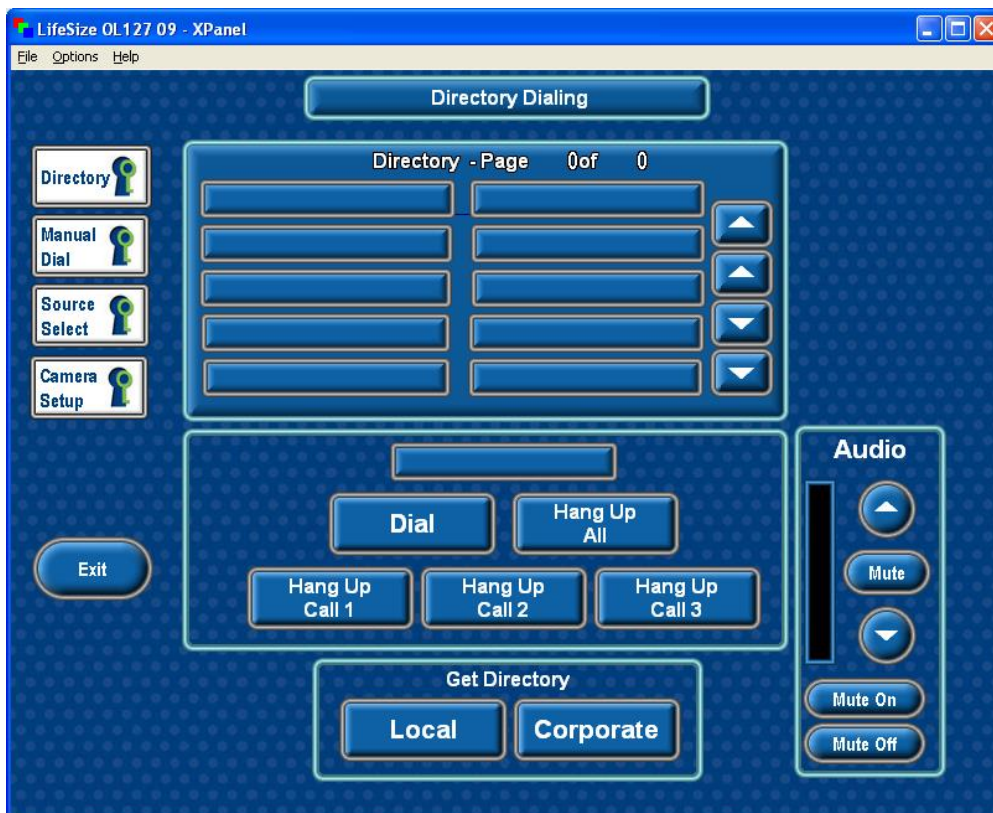
The Videoconference systems equipment functions are controlled from the podium PC using the software package "Projector Control". The Projector Control program will start when the PC boots. If the Projector Control window is not active, click on the Projector Control desktop icon to activate the program.



Select the mode required: Video Conference, or Presentation.

Video Conference Control

The Xpanel has several pages for conference control. The initial page loaded is the Directory dial page used for placing a call from the existing directory



The Manual Dialing Page allows the user to enter an IP address to call. As well as call speed and type.



The Source Page selects camera/video input source



Camera Set-up page allows user to move camera and save camera presets

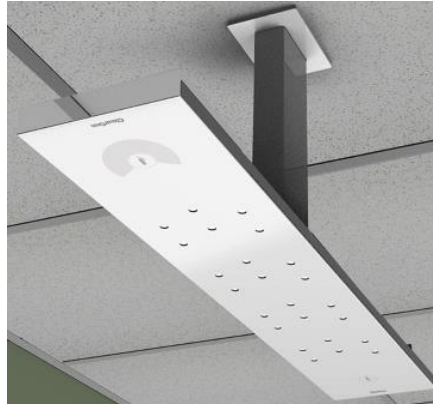


Microphones

The classroom has ceiling microphone arrays and one lapel microphone.

[Ceiling Microphones](#)

The ceiling microphones cover the room well for voice. With large groups, be aware that room noise (shuffling papers etc) will be picked up by microphones and may reduce sound quality at remote site.

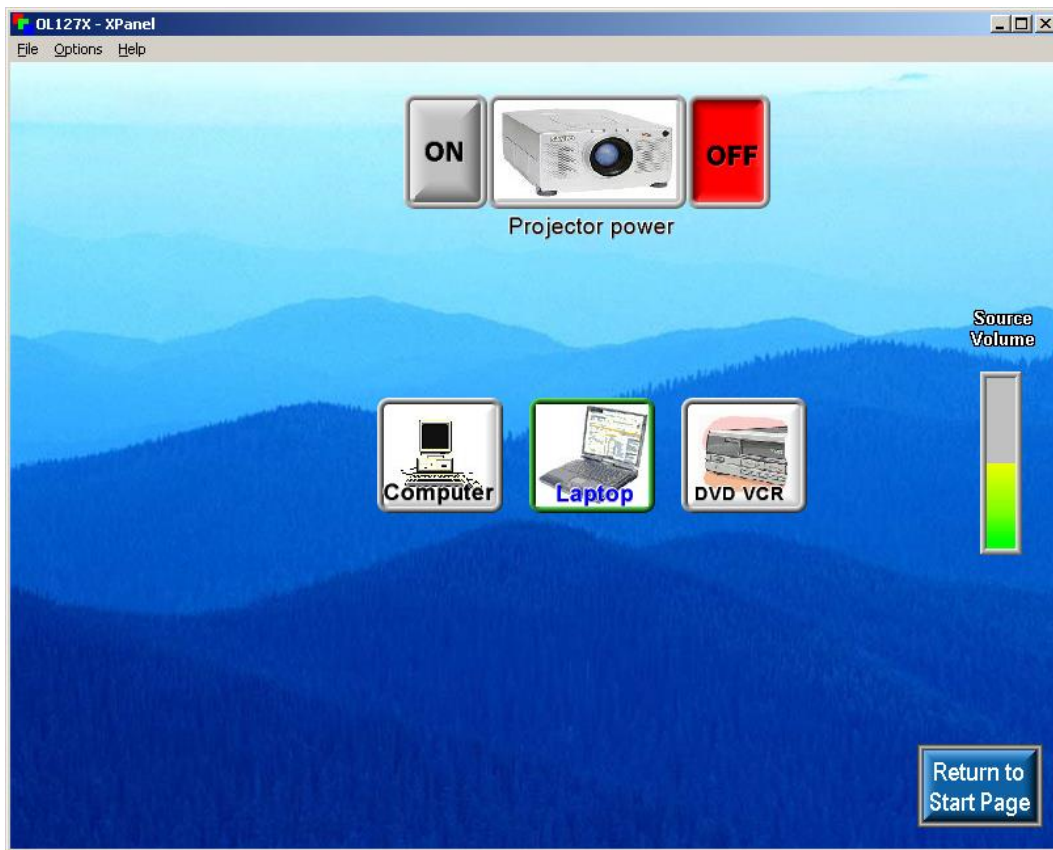


[Lapel Microphone](#)

Use the Lapel microphone for speech reinforcement. The microphone uses two AA batteries.



Presentation Control



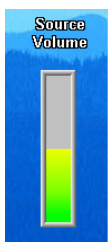
The LCD Projector is switched on or off with the icon pictured to the left. **When switching on the projector allow 2 minutes for the projector to reach full brightness.** When the Projector has been shut off allow 5 minutes for the projector cool down before re-powering.



The Computer icon routes the podium computer display to the LCD Projector.



The Laptop icon routes display information from a laptop PC to the LCD Projector. A VGA cable is available on the podium desktop to connect to a laptop.



Set audio levels using the Volume Slider on the Presentation Control window. Volume is variable for the connected audio sources. The DVD audio is adjustable within the PC DVD program as well by right clicking during DVD playback and adjusting the volume bar. Sound sources are switched when a Projector input is selected, for example, when the computer icon is selected, PC sound is routed to the amplifier. When switching from the VCR Control page back to the Main page in the Projector Control window VCR audio is muted.

Use the Converge Tabletop controller to place and answer telephone calls in OL 127. Ceiling speakers are used for received sound.

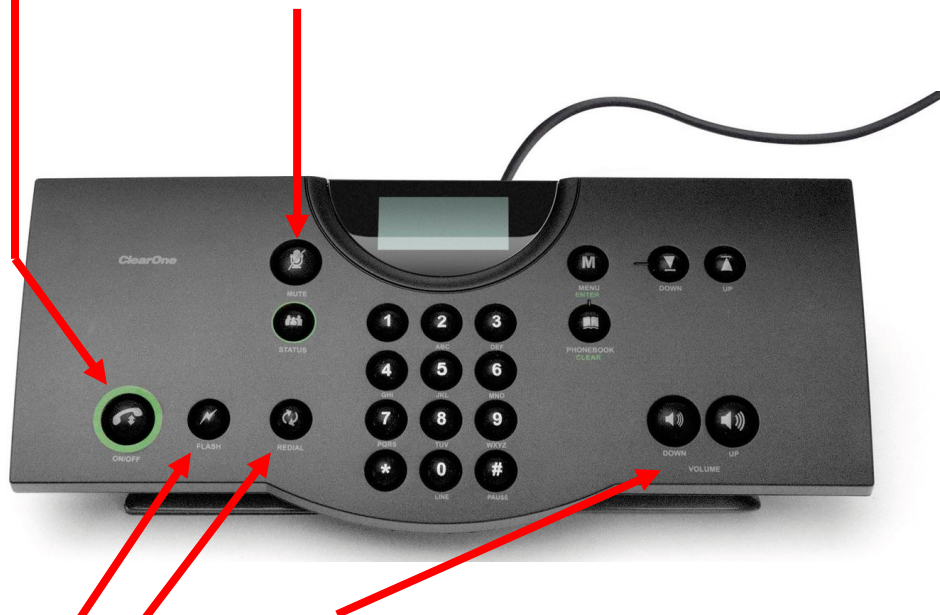
Answer: Press to answer an incoming telephone call

Dial: Press to initiate a call.

Pre-dial: Dial the phone number (using the * key to delete the last digit). Press the **Dial** key to send the call. 44 character maximum.

End: Press while on a call to disconnect.

Mute/Unmute: Press to mute the microphones. Press again to unmute.



Volume Up/Down: Use these buttons to increase or decrease incoming volume

Redial: Redials the last outbound number dialed from the controller.

Flash: Press to transfer, use call waiting or conference calling