



Research and Graduate Studies  
News, achievements, opportunities and more

Knowledge that Inspires

Find past newsletters [HERE](#).

## Research Week, 2016

### March 15

**Celebrating 2015 Authors**  
Noon - 1:15 p.m.  
OM 1522

► A collective book launch for all faculty who published in 2015.

**Book Launch, *Beckett in Popular Culture***

1:15 - 1:45 p.m., OM 1522  
► Edited by Peter Murphy and Nick Pawliuk.

**Dr. Carlos Linares, guest speaker**  
1 - 2 p.m.

Panorama Room, IB  
► The retired respirologist presents, "Problems tourists face while traveling in South America."

### March 16

**Workshop - Data Management Plans**  
9:00 - 9:30 a.m.

Main Library - L209  
► Led by Kathy Gaynor, ideal for those with publicly funded research projects.

**Jess Rothenburger**  
1:30 - 3:30 p.m., Barber Centre, HOL

► Gringos in the Garbage documentary & presentation.

**Dr. Darla Deardorff, guest scholar**  
3:30 - 4:30 p.m.

Panorama Room - IB  
► Exploring Intercultural Competence from Different Perspectives.

### March 17

**Graduate Research Symposium**  
9:30 a.m. - 1 p.m.

Mountain Room - CAC  
► This second annual symposium highlights graduate research.

**Guest Scholar: Dr. VanGronsveld**  
1 - 2 p.m., Panorama Room, IB

► Lecture on plants and remediation of contaminated soil.

**Keynote Speaker, Dr. Gwynne Dyer**  
6 - 7:30 p.m., Grand Hall, CAC

► Don't panic: Islamic State, Terrorism and the Middle East.

### March 18

**Three Minute Thesis 3MT**  
10 - 11:30 a.m.  
OM 3632

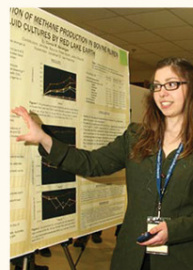
► Cheer on graduate students as they present their research in three minutes or less. The winner receives a cash prize and advances to the Western Canadian Final.

**11th Undergraduate Research & Innovation Conference**  
Noon - 6 p.m.  
3rd Floor Library, HOL  
► Posters reflect current research taking place by TRU undergraduate students.

### March 19

**11th Undergraduate Research & Innovation Conference**  
9 a.m. - 6 p.m.

International Building  
► Concurrent lecture sessions take place all day.



Celebrating

## Research at TRU

TRU's inaugural Research Week, March 15-19, is a product of our growing research capacity and our commitment to high-quality, interdisciplinary research. We hope you can join us at the events, which are designed to showcase, celebrate and support the wide-ranging student and faculty research taking place at TRU. Many of these research events are integrated throughout IDays, highlighted by the Learning at Intercultural Intersections Conference. International researchers will be on campus this week creating a fusion between expressions of culture that have long formed the bedrock of IDays, and an academic, research focus that explores the importance of internationalization within higher education. See the comprehensive list of activities on the [IDays schedule of events](#).

- [March 15, noon to 1:15 p.m., OM 1522: Celebration of 2015 Authors.](#)

All faculty are encouraged to attend and use this opportunity to celebrate and share experiences with colleagues.

- [March 15, 1:15 p.m. to 1:45 p.m., OM 1522: Book Launch](#)

*Beckett in Popular Culture: Essays on a Postmodern Icon*, edited by P.J Murphy and Nick Pawliuk. Join us

immediately following the 2015 Author Celebration for the official launch of this new collection of essays.

- **[Multiple dates: Intercultural Conference](#)**  
TRU welcomes back 10 external researchers to campus to move forward with the conversation surrounding interculturalization of higher education. There are several guest lectures scheduled that are open to the public.
- **[March 17, 9:30 a.m. to 1 p.m., Mountain Room, CAC: Graduate Research Symposium](#)**  
Designed for and by graduate students, this second annual symposium aims to develop interdisciplinary collaborations within TRU's graduate programs, and offer an opportunity to celebrate graduate research. Faculty and undergraduate students are welcome to attend.
- **[March 18, 10 a.m. to 11 a.m., OM 3632, Three Minute Thesis](#)**  
Come cheer on graduate students as they present their research. The winner receives a cash prize and advances to the Western Canadian final. The audience is encouraged to vote for People's Choice.
- **[March 18-19, various locations/times: Undergraduate Research & Innovation Conference.](#)**  
Discover the unique research being conducted by TRU undergraduate students during the poster presentations in HOL on Friday, and at the concurrent lecture sessions on Saturday in the International Building.

## Research News & Updates

### 21 faculty members awarded Internal Research Fund grants

The [Internal Research Fund](#) is designed to help establish new research programs and support faculty members as they apply for external research grants. Congratulations to the 2016 grant holders: Jenni Karl, Lorne Neudorf, Margaret Hall, Charis Kamphuis, Nicole Schabus, Mohamed Tawhid, Haytham El Miligi, Dipesh Prema, Kingsley Donkor, Mark Rakobowchuk, Susan Forseille, Jeaneatte Robertson, Daphne Jeyapal, Laura Doan, Juliana West, Murat Eroglu, Randall Kimmel, Joyce O'Mahony, Mirza Noeman, Kim Munich and Robin Reid.

### Law faculty share in \$10,000 grant

Congratulations to TRU Law professors Chris Hunt, Lorne Neudorf and Micah Rankin, who were awarded a \$10,000 research grant from the [Foundation for Legal Research](#) for their project, "The Guide to the Canadian Interpretation Act." The project will develop an accessible and practical legal resource for lawyers, judges and self-represented litigants. Despite the importance of the Interpretation Act to understanding the law, little commentary has been written on it. The project will fill this gap by providing expert commentary and case law analysis on this vital piece of legislation.

### School of Nursing launches research plan

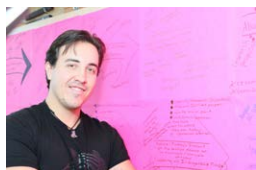


On March 7, the School of Nursing unveiled its new strategic research plan. "[Making a Difference: Scholarship and Research in the School of Nursing at TRU, 2016-2021](#)," identifies strategic directions for the school and prioritizes four themes for scholarship and research over the next five years. According to Dean of Nursing Dr. Donna Murnaghan, the research being conducted at TRU has the potential to influence health policy, improve delivery of care, and help attract and prepare the next generation of nurses to fill much-needed nursing positions.

### Graduate students shine at Bamfield conference

TRU Master of Science in Environmental Science students impressed the judges during the 37th annual Pacific Ecology and Evolution Conference held Feb. 26-28 in Bamfield. The students took five of the Top 10 awards. [Read more...](#)

### Indigenous students become Knowledge Makers



Seventeen students spent Reading Week becoming Knowledge Makers as part of what is hoped will be an annual program designed to encourage Aboriginal undergraduate students to engage in research. The Knowledge Makers program is sponsored by the Office of Research and Graduate Studies and coordinated by Sereana Naepi, a TRU research fellow and Indigenous doctoral

student working with Professor Airini, Dean of the Faculty of Education and Social Work. [Read](#)

[more ...](#)

## Register for Rural Health Services Research Conference at TRU in April

[Registration is now open](#) for Developing Intercultural Connections and Practical Solutions for Improving Health: Health Science and Community Partnering Scheduled for April 25-26 at TRU. This year's theme focuses on developing intercultural connections and partnering in practical solutions for improving health. This conference is a partnership between Interior Health, TRU, the First Nations Health Authority and Rural Health Services Research Network of BC. For information: contact Kim Barnes, [kim.barnes@interiorhealth.ca](mailto:kim.barnes@interiorhealth.ca).

## In the News

### Researcher speaks to A&W cage-free egg production

On March 11, A&W announced a commitment to improve and redesign housing for egg laying hens. Dr. John Church, BC Innovation Chair in Cattle Industry Sustainability, has a background in poultry housing, spoke to the announcement: "Enriched housing helps farmers to ensure hen safety and minimizes mortality and aggressive behaviours that are difficult to control in open barn settings," he said. "Enriched housing is more spacious and the hens also have access to adequate food and water as well as nests, perches and scratching areas, which allows them to engage in many more natural behaviours compared to battery cages." [Read more...](#)

### Research aims to reduce transformer failures



Like many TRU faculty members, Dr. Kingsley Donkor has kept in contact with his students through the years, offering mentorship as they embark on different stages in their careers. Today, one of those relationships has blossomed into an NSERC-funded project that has the potential for significant positive impact to the power generation industry. [Read more...](#)

### TRU a provincial hub for invasive species research



Dr. Brian Heise has been appointed Chairman of the Invasive Species Council of BC, further solidifying TRU as a hub for research in invasive species. Heise is excited to play a role in the development of national, research-based policy, and says that while the ISCBC has long played a key role in educating the public about invasive species, he hopes to expand the council's mandate to focus more heavily on research. Heise spoke of his new role on the Jim Harrison Show on Radio NL on March 2. [Read more ...](#)

### Op-Ed: Keep the carbon tax

Joel Wood, assistant professor in the School of Business and Economics, wrote an op-ed featured in The Vancouver Sun, urging the provincial government to "show leadership by returning the (carbon) tax to true revenue neutrality through income tax cuts rather than gifts to special interest groups." [Read More ...](#)

## Upcoming Events

### Technology Speaker Series

- March 15, 2016, 4 p.m., Irving K. Barber Centre. Dr. Harry Zarek, President and CEO of Compugen, "Can the Internet of Things Stimulate Local Innovation?"

## Author reading

- March 17 at 4:30 p.m., IB 1020. Poet, memoirist, novelist, academic and performance artist Michael V. Smith will give a public reading of his most recent novel, with an opportunity for a discussion following the reading.

## Camera Obscura at the KAG



**Midnight Sun Camera Obscura** — Jan. 16 to March 19, 2016. This exhibit represents works created and exhibited by artists and researchers in Dawson City.

**Live Stream: Optical Rendering** — Jan. 16 to March 19, 2016. This exhibit features new works and do-it-yourself optical projectors by TRU students Dion Fortie, Ryland Fortie and Levi Glass.

## Arts Colloquium

- March 23 at 4-5 p.m., TRUSU Lecture Hall. This is the final presentation in the 2015-2016 series. Dr. Wilson Bell (History) presents, "Murder and Religion in Revolutionary Siberia." Following the presentation, guests are invited to Red Collar (on Lansdowne) for further discussion, and to celebrate another year of this successful series.

## KamBug in The Generator

- April 14, 5:30 to 7:30 p.m., The Generator, lower level, House of Learning. Come and participate in a live webcast in which Elhanan Borenstein, Associate Professor in the Department of Genome Sciences at the University of Washington will deliver the presentation, "Computational study of human microbiome and other complex microbial ecosystems."

# Mobilizing Knowledge

## Presentations

- Dr. Bruce Baugh presented, "It ain't necessarily so," at the Department of Philosophy Colloquium, University of Alberta, Edmonton, on Feb. 25, 2016.
- Dr. James Hoffman, professor emeritus of Theatre, presented "The British Columbia Theatre History Collection," during the Treasures & Tea presentation at the University of Victoria, on March 9, 2016.
- Dr. Noeman A. Mirza, presented, "Effects of abductive reasoning training on hypothesis generation," at the Hawaii International Conference on Education in Honolulu, HA, Jan. 5-8, 2016. He also presented his research at the Western & North-Western Region Canadian Association of Schools of Nursing Conference in Saskatoon, SK, Feb. 17-19, 2016.

## Published articles

- **Baugh, Bruce.** "Tom Flynn on 'dialectical nominalism' and the 'mediating third'." *Sartre Studies International*. 21:2 (2015). 13-24.
- **Bergstrand, Lee H.,** Erick Cardenas, Johannes Holert, **Jonathan D. Van Hamme,** and William W. Mohn. "[Delineation of steroid-degrading microorganisms through comparative genomic analysis.](#)" *mBio*. 7:2. (2016) doi:10.1128/mBio.00166-16.
- Bonderud, Erica S. **Nancy J. Flood, Jonathan D. Van Hamme,** Cameron A. W. Boyda, and **Matthew W. Reudink.** "[Female mountain bluebirds \(\*Sialia currucoides\*\) paired to more colourful males produce male-biased broods.](#)" *Behaviour*. 153:3, 367-386 (2016), DOI:<http://dx.doi.org/10.1163/1568539X-00003350>
- **Cooke, Lisa.** "Skwelkwek'welt is what we call this place: Indigenous-Settler relations and the 'othered' side of



British Columbia's Sun Peaks Resort." *Political Ecology and Tourism: Routledge Studies in Political Ecology*. Sanjay Nepal and Jarkko Saarinen, eds. 2016 Routledge, New York, NY. 225-238.

- Gkorezis, P., **Jonathan D. Van Hamme**, **Eric M. Bottos**, Sofie Thijs, Maria Balseiro-Romero, Carmela Monterroso, Petra S. Kidd, Francois Rineau, Nele Weyens, and Jaco Vangronsveld. "[Draft genome sequence of \*Pantoea ananatis\* GB1, a plant-growth-promoting hydrocarbonoclastic root endophyte, isolated at a diesel fuel phytoremediation site planted with \*Populus\*.](#)" *Genome Announcements* 4:1 (2016) doi:10.1128/genomeA.00028-16.
- Grenier, Marie-Lyne, Rochelle Mendonca and **Peter Dalley**. "The Effectiveness of Orthoses in the Conservative Management of Thumb CMC Joint Osteoarthritis: An Analysis of Functional Pinch Strength." *Journal of Hand Therapy*. 2016. doi:10.1016/j.jht.2016.02.004
- **Haverila, Matti J.**, and Kacy Fehr. "The impact of product superiority on customer satisfaction in project management." *International Journal of Project Management*. 34:4. 570-583. 2016.
- **Hunt, Chris D.L.**, and **Lorne Neudorf**. "[The expert witness's duty of impartiality in Canada: A Comment on \*White Burgess Langille Inman v. Abbott and Haliburton Co.\*](#)" *The International Journal of Evidence and Proof*. 20:1, 2016. 72-77.
- **Ng, Alex** and **Raymond A.K. Cox**. "Corporate takeovers in the US oil and gas sector." *Journal of Economic & Financial Studies*. 04:02, 23-24. (2016).
- **Stewart-Patterson, Iain**. "Measuring decision expertise in commercial ski guiding in a more meaningful way." *Journal of Outdoor Recreation and Tourism*. <http://dx.doi.org/10.1016/j.jort.2015.11.009>
- **Tawhid, Mohamed A.**, and Ahmed F. Ali. "[A simplex social spider algorithm for solving integer programming and minimax problems.](#)" *Memetic Computing*. 1-20. 2016. Doi: 10.1007/s12293-016-0180-7
- **Tawhid, Mohamed A.**, **Wei-Zhe Gu**, and Benjamin Tran. "[A descent algorithm for generalized complementarity problems based on generalized Fischer-Burmeister functions.](#)" *Computational and Applied Mathematics*. 2016. 1-26.

## Funding Updates & Opportunities

### [Research Prospecting Guide: Featured opportunities](#)

- [Connect Grant](#): This grant helps establish new contacts with companies and other knowledge end-user communities to form new partnerships. The deadlines are ongoing, and up to \$25,000 is available
- [Killam Research Fellowship](#): These awards provide support to scholars of exceptional ability who are engaged in research projects of broad significance and widespread interest. The fellowships provide two years of release time from teaching and administrative duties to individual scholars who wish to pursue independent research. The deadline to apply is May 15, 2016.
- [The Vancouver Foundation's Field of Interest Grants](#) can be used to fund projects that work toward meaningful outcomes in: arts and culture, education and training, environment, health and social development. The deadline to apply is May 15, and up to \$50,000 per year is available.

### [Canadian Water Network](#)

#### **Deadline to apply: April 15, 2016**

The Canadian Water Network's Canadian Municipal Water Consortium is soliciting proposals for an academically-led project of up to 14 months in duration with a maximum budget of \$175,000 to assess the relative contributions of nutrients from urban non-point sources during extreme storms, and examine opportunities to reduce nutrient loading to the Lake Simcoe watershed through the identification and recommendation of effective BMPs.

### [BC Arts Council: Leon and Thea Koerner Award](#)

#### **Deadline to apply: April 1, 2016**

The BC Arts Council supports arts and cultural activity in communities across the province, and offers many [grant opportunities](#). The Leon and Thea Koerner Award (LTK) is designed to improve the well-being of communities, organizations or groups of individuals in BC through the authentic collaboration of community social services and professional arts organizations and artists.

## [Sloan Research Fellows](#)

**Deadline to apply: Sept. 15, 2016**

Funded by the Alfred P. Sloan Foundation, this opportunity provides \$55,000 for two years for "any activity supportive of the fellow's research, including equipment, technical assistance, professional travel or trainee support." Early career scientists in chemistry, computer science, economics, math, neuroscience, ocean sciences, physics, computational and evolutionary molecular biology and associated fields will be considered. Candidates must hold tenure track, with a PhD awarded on or after September 2010. Candidates must be nominated by their department head, or another senior researcher. To nominate and apply, please email [research@tru.ca](mailto:research@tru.ca).

## [Human Dimensions Open Data Challenge](#)

SSHRC has partnered with Compute Canada, Ontario Centres of Excellence and ThinkData Works to launch the first "Human Dimensions Open Data Challenge" in January 2016. Organized as part of SSHC's Imagining Canada's Future Initiative, this challenge seeks to address the following question: "What data, technology or process initiatives will mitigate or address critical business, policy and social challenges in Canada's natural resources and energy sectors through 2035." Five finalist teams will each be awarded \$3,000. The top team will be selected from among the five top teams, and will be awarded an additional \$5,000. For more information, or to apply please email [research@tru.ca](mailto:research@tru.ca).

## [Mitacs Elevate](#)

Mitacs Elevate is now accepting applications for two-year postdoctoral funding:

- \$55,000 annual award (plus \$7,500 per year non-cash value in training)
- Customized training exclusive to Elevate fellows
- Long-term collaborative research project with a non-academic partner

The deadlines are as follows: Letter of intent: March 23, 2016, 5 p.m.; application: April 6, 2016, 1 p.m.

Results will be announced June 2016, and projects must begin by Sept. 15, 2016.

## [Welfare, Wellbeing and Demographic Change: Understanding Welfare Models](#)

The Joint Programming Initiative has opened the Joint Transnational Call 2016 with the objective of enabling a better coordination of national, European and Canadian research and development programs and activities relevant to demographic change in order to address the most urgent and demanding challenges defined in the Strategic Research Agenda, developed under the EC funded Coordination and Support Action J-AGE II. For more information, or to apply please email [research@tru.ca](mailto:research@tru.ca).

## [IC-IMPACTS: Smart and Green Buildings in Sustainable Cities](#)

**Deadline for project proposals: April 1, 2016**

IC-IMPACTS and the Department of Science & Technology India are partnering to support innovative research in Smart and Green Buildings for Sustainable Cities. According to the United Nations Environment Program, buildings are responsible for about one-third of total global greenhouse gas emissions and 40% of all energy consumption. Together, the scientific and industrial communities of the two countries seek to devise world leading clean technologies and novel approaches to create more sustainable infrastructure. For more information, or to apply please email [research@tru.ca](mailto:research@tru.ca).

## [Infrastructure funding: John R. Evans Leaders Fund \(JELF\): Letters of Interest invited](#)

**Deadline for complete application: May 1, 2016**

Faculty interested in applying for infrastructure support are encouraged to contact the Research Office at their earliest opportunity for the June 2016 JELF. This is a program of the Canada Foundation for Innovation designed to help universities support the infrastructure needs of individual faculty or small groups of up to three faculty members. For information about this opportunity, please contact Research Grants Development Officer, Dr. Anita Sharma,

[ansharma@tru.ca](mailto:ansharma@tru.ca).

## Deadlines

Bookmark the TRU Research [Funding Calendar](#) for up-to-date opportunities.

### Health Related Opportunities:

[Public Health Agency of Canada — Healthy Living and Injury Surveillance for Chronic Disease Prevention Initiative:](#)

**Deadline ongoing**

[Public Health Agency of Canada — Multi-Sectoral Partnerships to Promote Healthy Living and Prevent Chronic Disease:](#)

**Deadline ongoing**

### NSERC:

[Strategic Partnership Grants for Networks:](#) Internal deadline **March 15**; agency deadline **April 1**

[Strategic Partnership Grants for Projects:](#) Internal deadline **March 15**; agency deadline **April 1**

### SSHRC:

[Connection Grants:](#) Internal deadline **April 18**; agency deadline **May 1**

[Human Dimensions Open Data Challenge:](#) Agency deadline **March 31**

### Other:

[Full Application- Canada Foundation for Innovation:](#) Internal deadline **May 1**; agency deadline **June 15**

[IC-IMPACT:](#) Internal deadline **March 18**; agency deadline **April 1**

## Get in touch

### Key contacts for research services

Dr. Will Garrett-Petts

AVP, Research and Graduate Studies

[petts@tru.ca](mailto:petts@tru.ca) | 250.828.5410

Dr. Lincoln Smith

Director, Research Partnerships and Enterprise Creation

[lsmith@tru.ca](mailto:lsmith@tru.ca) | 250.371.5973

Troy Fuller, Manager, Research Services

[tfuller@tru.ca](mailto:tfuller@tru.ca) | 250.371.5569

Dr. Anita Sharma, Research Grants Development Officer

[ansharma@tru.ca](mailto:ansharma@tru.ca) | 778.471.8439

Dr. Megan Prins, Research Grants Development Officer

[mprins@tru.ca](mailto:mprins@tru.ca) |

Caroline Whitelaw, Administrative Assistant

[cwhitelaw@tru.ca](mailto:cwhitelaw@tru.ca) | 250.371.5586

Lori Cooper, Administration Support

[lcooper@tru.ca](mailto:lcooper@tru.ca) | 250.371.5586

Debbie Krebs, Ethics & Compliance Officer

[dkrebs@tru.ca](mailto:dkrebs@tru.ca) | 250.852.7122

Sarah Carefoot, Research Finance Officer

[scarefoot@tru.ca](mailto:scarefoot@tru.ca) | 250.371.5626

Danna Bach, Communications Officer

[dbach@tru.ca](mailto:dbach@tru.ca) | 250.371.5676

[www.tru.ca/research](http://www.tru.ca/research)

Blog: [research.inside.tru.ca](http://research.inside.tru.ca)

Twitter: [@TRUResearch](https://twitter.com/TRUResearch)

Research news is always welcome. Please [get in touch](#) if you have news, events, or accomplishments you'd like to share.

If you know someone who would benefit from our newsletter, [CLICK HERE](#) to forward to a friend or colleague.

*Copyright © 2016 Research and Graduate Studies, All rights reserved.*

[unsubscribe from this list](#) [update subscription preferences](#)



*Copyright © 2016 Research and Graduate Studies, All rights reserved.*

[unsubscribe from this list](#) [update subscription preferences](#)

