



Multimedia Classroom Guide

Technical Support

Should you encounter technical problems please contact Help Desk at **250-852-6800**

Multimedia classrooms are equipped with a ceiling mount LCD projector. Inputs available to project are;

- Computer display from the podium PC, or a connection provided for a laptop computer
- DVD video playback. (PC DVD player)

The system equipment is controlled from the podium computer using Projector Control software. Each room is equipped with a sound system to amplify sound from the various sources. The PC is network connected for Internet and LAN access.

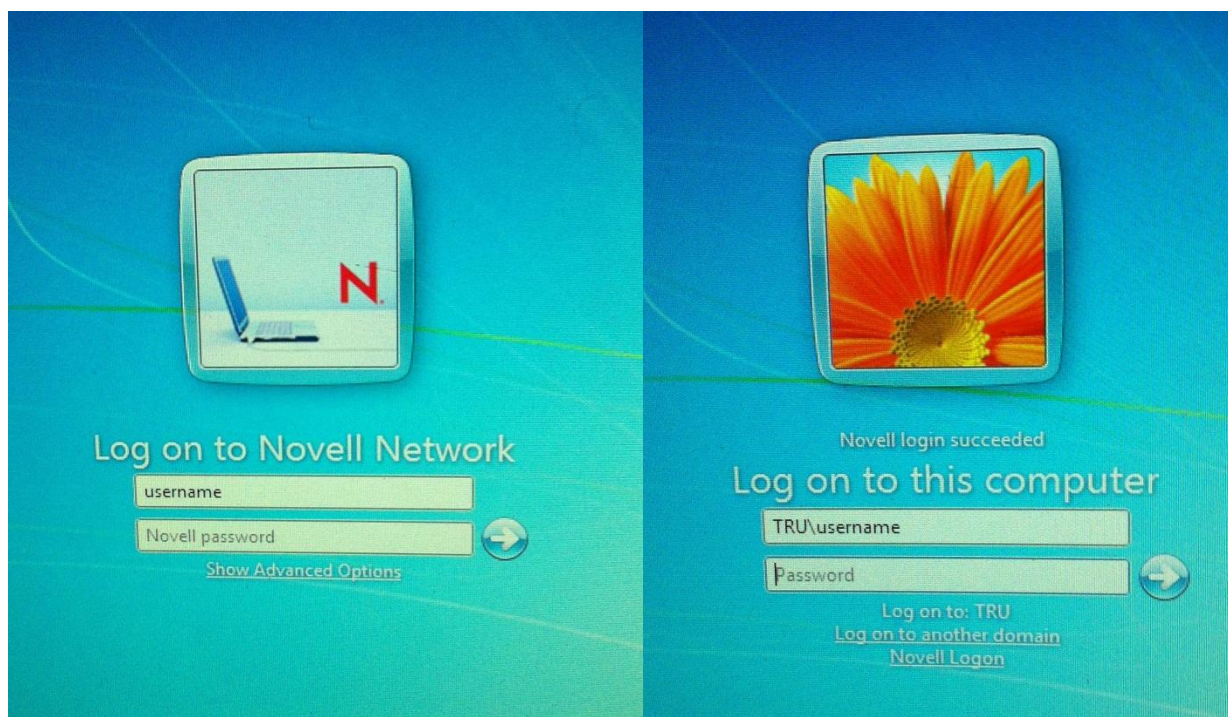
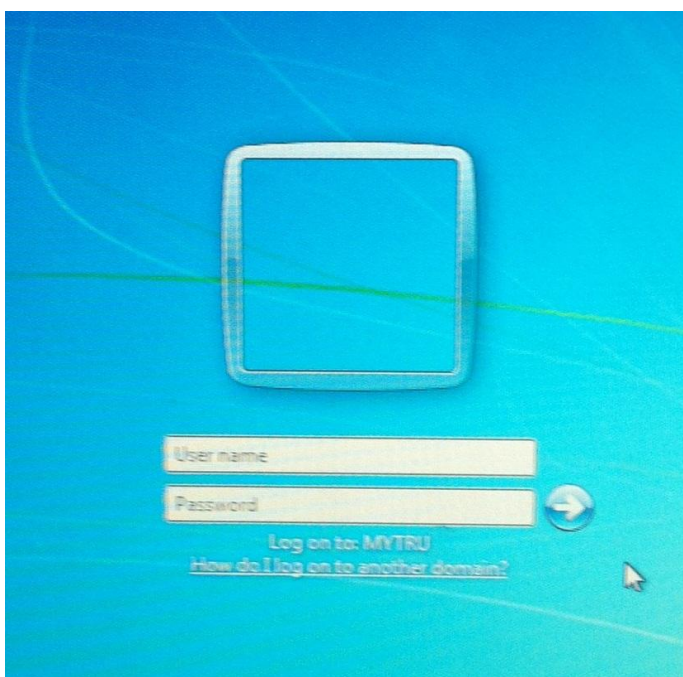
Network Login

Faculty/Staff login in Classrooms or Computer Labs

This is the Windows Active Directory login screen that all computers will eventually have.

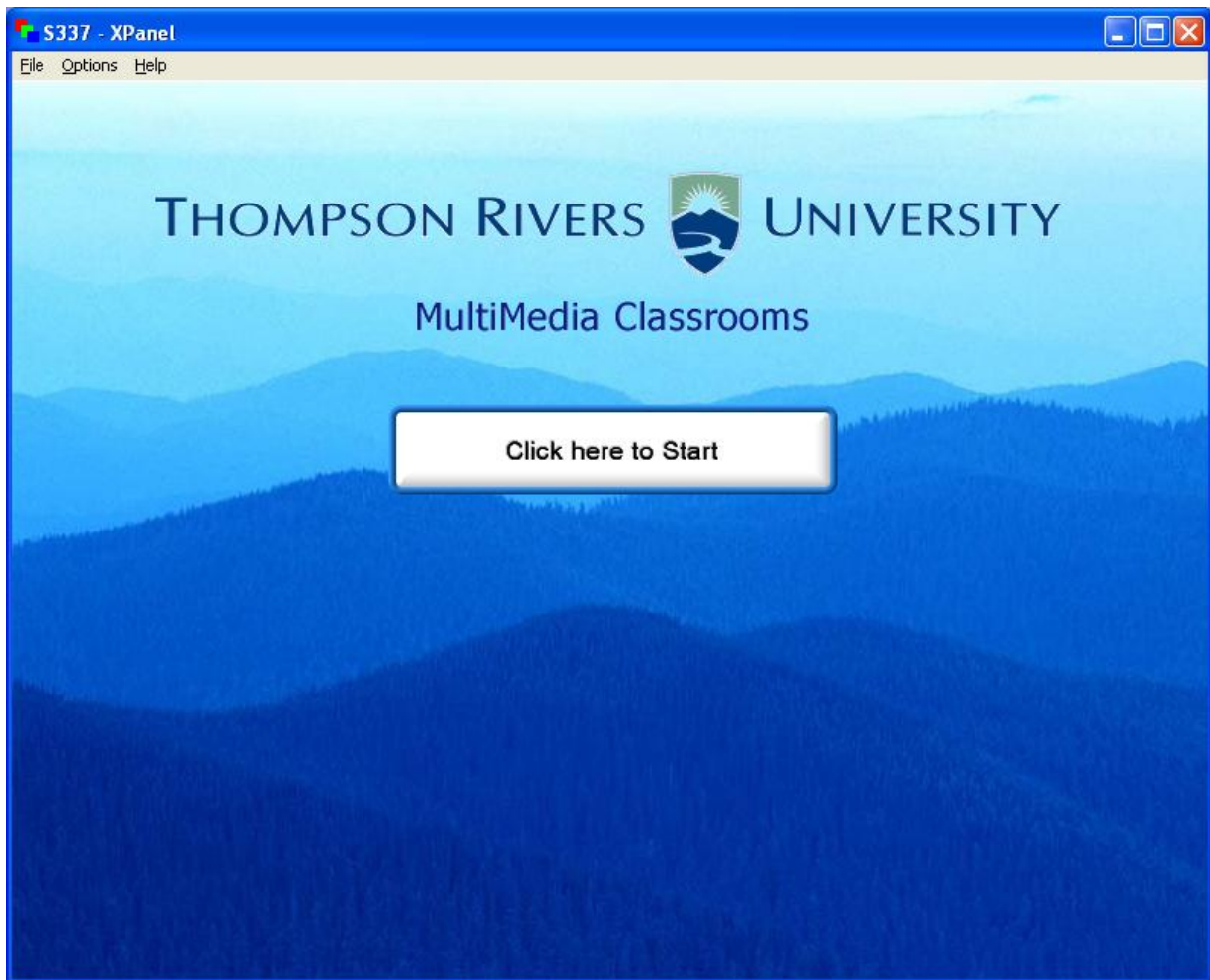
When you see this as your login screen type "TRU\username" to login to the computer.

This login also applies to any computers that are still Windows XP as well.



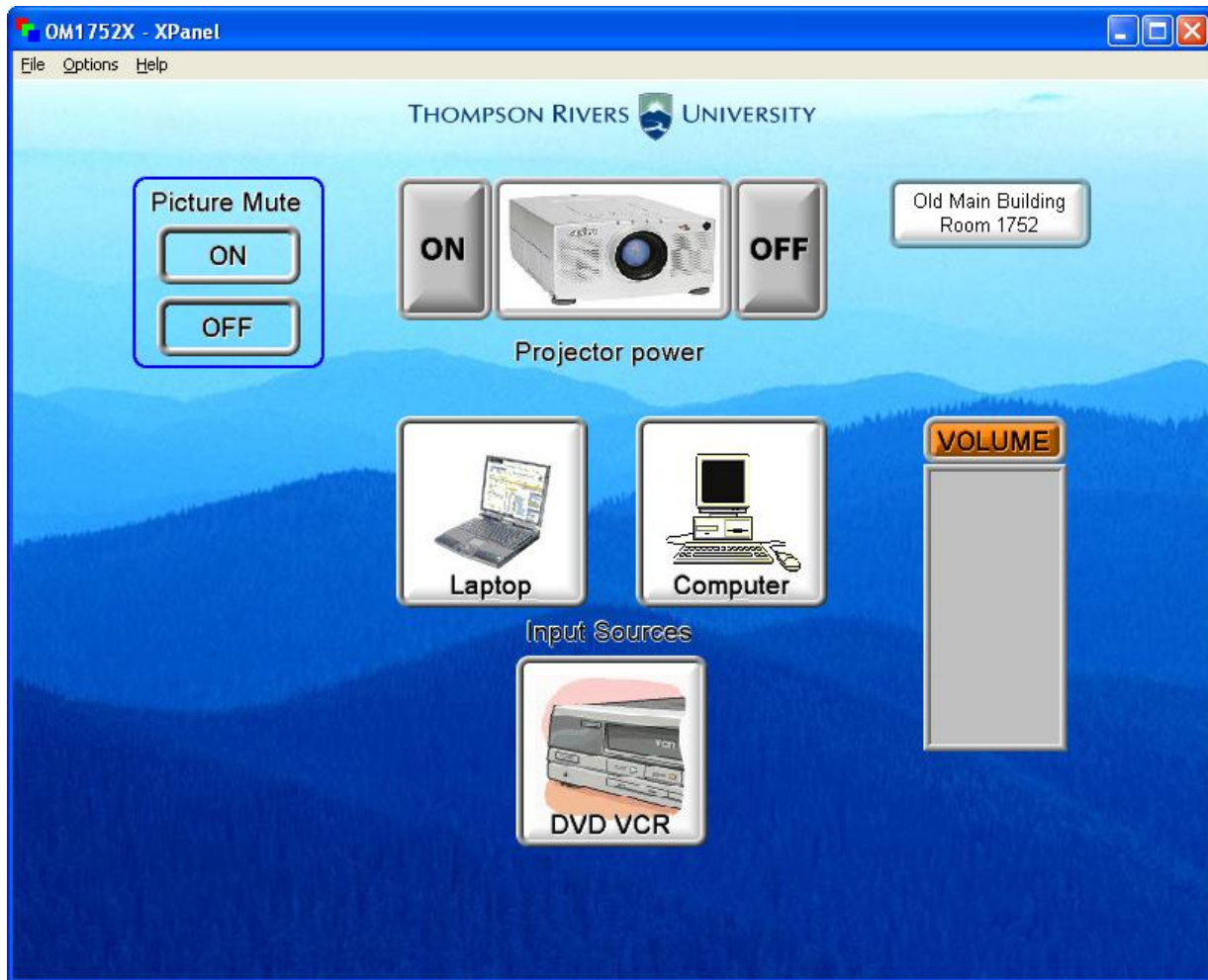
If the computer still has Novell on it, use just your **username** and password to "Login at the Novell Network" screen and the **TRU\username** and password at the "Log on to this computer screen".

The Multimedia systems equipment functions are controlled from the podium PC using the software package "Projector Control". The Projector Control program is loaded in the start up files on the podium PCs and will start when the PC boots. If the Projector Control is window is not active, click on the Projector Control desktop icon to activate the program.



XPanel Start Page

The Projector Control main page controls the LCD Projector and TV power, and sources (data or video) for the Projector and TVs. The DVD VCR icon will open a corresponding control window, which will allow function (FF/Rewind etc.) control.



Xpanel Main Page

Keypad Controller



A desk mounted keypad controller is provided for projector power, source selection, and volume control in addition to PC based Xpanel controller.



The LCD Projector is switched on or off with the icon pictured to the left. **When switching on the projector allow 2 minutes for the projector to reach full brightness.** When the Projector has been shut off allow 5 minutes for the projector cool down before re-powering.

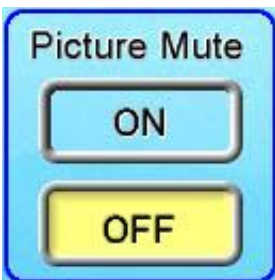
After the LCD Projector power is on, select the information source you wish to view from the Projector Control window icons.



The Computer icon routes the podium computer display to the LCD Projector.



The Laptop icon routes display information from a laptop PC to the LCD Projector. A VGA cable is available on the podium desktop to connect to the laptop.



The Picture Mute icon blanks the projection screen image. The podium monitor remains on. Click the "off" icon to restore the projection image.



Audio levels are controlled using the volume level slider on the Projector Control window. Volume is variable for the VCR and Computer audio sources. The DVD audio is adjustable within the PC DVD program as well by right clicking during DVD playback and adjusting the volume bar. Sound sources are switched when a Projector input is selected, for example, when the computer icon is selected, PC sound is routed to the amplifier. When switching from the DVD VCR Control page back to the Main page in the Projector Control window DVD VCR audio will be muted

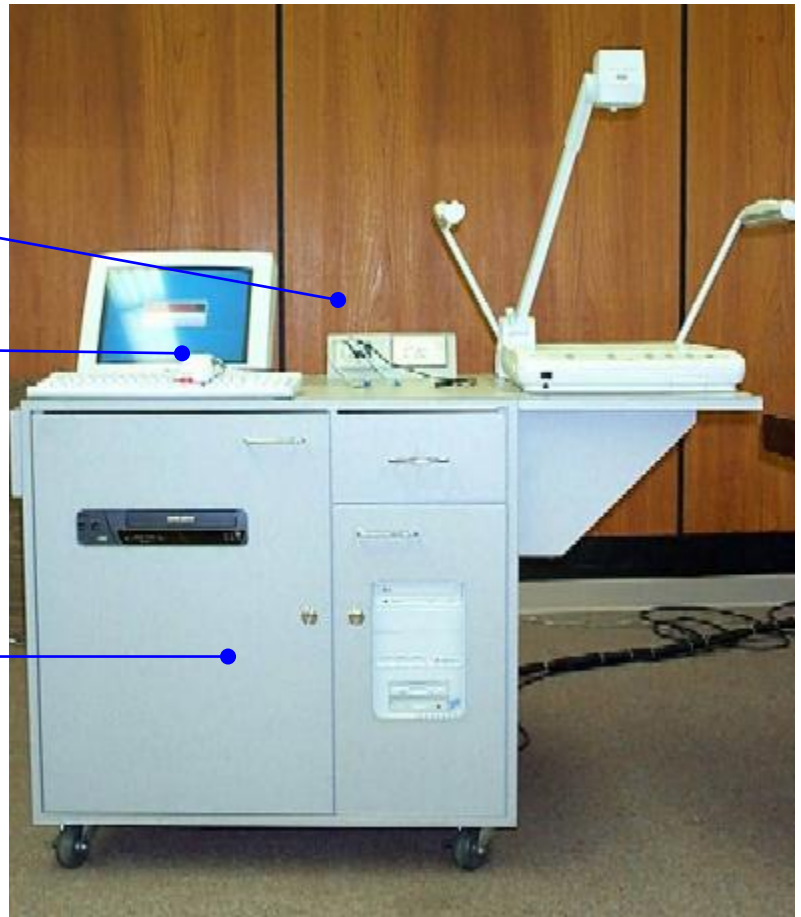
Podium Equipment Locations

Elmo Document Camera (option)

Laptop VGA connectors

DVD VCR

Computer

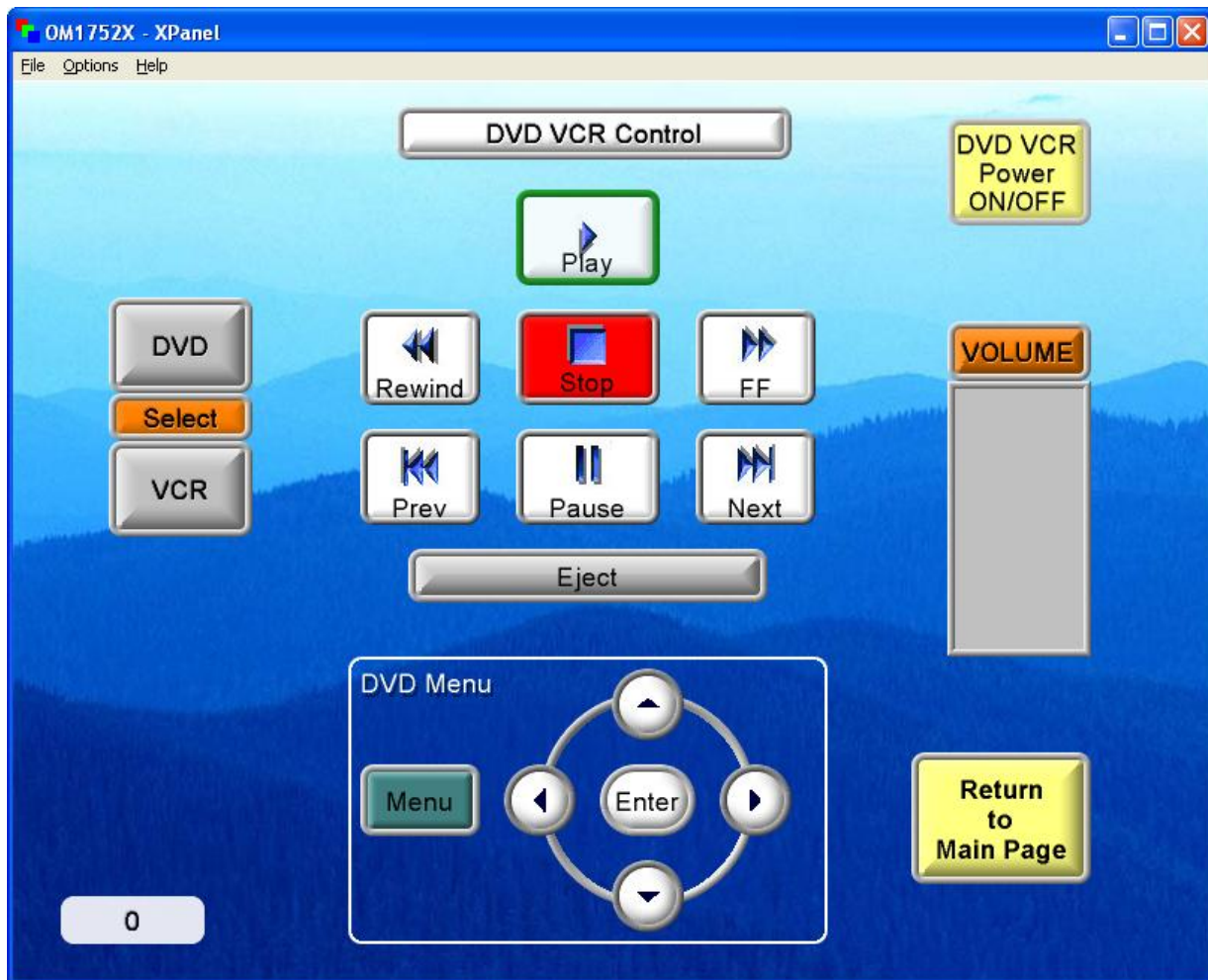


Laptop PC VGA, USB extension, and Audio connectors

DVD/VCR Control Window



When the DVD VCR icon is selected the DVD VCR control window will open. The icon also routes video and audio from the podium DVD VCR to the projector. The control window allows remote control of DVD VCR functions.



Clicking on the Function icons controls the DVD VCR functions; Play, Fast Forward, Rewind, and Pause. The Input Select icon selects the DVD VCR input, either Line, or Tuner. The volume bar controls playback sound level.